



TRAILARMOR.COM
839 HWY 2 CORINTH, MS 38834
(662) 233-5700

Installation Instructions

Installation Instructions for Can Am Maverick R Mud Flap Fender Extensions **TAMFFE-CAM-R**

Warnings and Product Liability Disclaimer

This product is intended to be used as a cosmetic accessory under normal equipment operation and should not be depended upon or used as a safety device. Manufacturer assumes no liability for personal injury or equipment damage as the result of use or installation of this accessory. User assumes all risk. User should carefully read all instructions prior to installation. **PLEASE NOTE:** This product was designed, fit and tested on new vehicle specifications. Any damage, modifications or excessive wear to your vehicle may require modification to the product and/or your vehicle to ensure proper fitment.

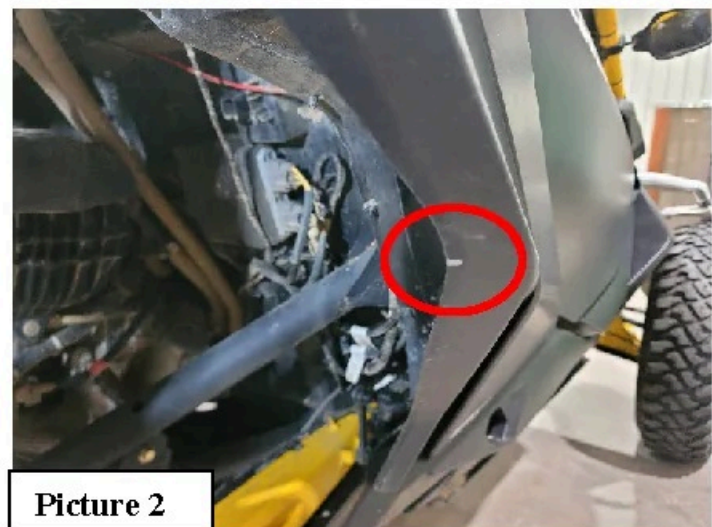


To Install Rear Extensions:

- A. Locate a ruler and place it in the center of the radius shown in Picture 1. Measure up 10" and make a mark, this will be your starting point. See Picture 2. Locate Passenger Rear Fender Extension and place it on the mark shown in Picture 3 and clamp it into place. Make sure you keep the edge of the mud flap in line with the OEM fender and add one more clamp. See Picture 4.



Picture 1



Picture 2



TRAILARMOR.COM
839 HWY 2 CORINTH, MS 38834
(662) 233-5700

Installation Instructions

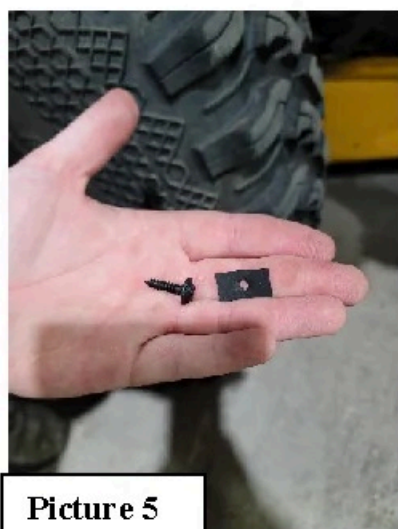


Picture 3



Picture 4

- B. Once aligned install (1) Phillips head screw (**100075**) into the lower hole of the fender extension through the OEM fender and install (1) Flat rectangle nut (**100071**). See Picture 5 and 5A.
- C. Working your way up and toward the rear of the machine install (1) Phillips head screw (**100075**) and (1) Flat rectangle nut (**100071**) in the next 2 holes. Remove the lower clamp. See Picture 6.



Picture 5



Picture 5A



Picture 6



Picture 7

- D. Making sure you are still lined up move to the next 2 holes and install (1) Phillips head screw (**100075**) and (1) Flat rectangle nut (**100071**) in each hole. See Picture 7.
- E. Moving to the rear of the fender extension clamp into position shown in Picture 8. Make sure the fender extension lines up with the OEM fender shown in Picture 9.
- F. Once lined up install (5) Phillips head screws (**100075**) and (5) Flat rectangle nuts (**100071**) into the remaining holes. Remove clamp. See Picture 10.
- G. Continue steps A through F for the driver's side.

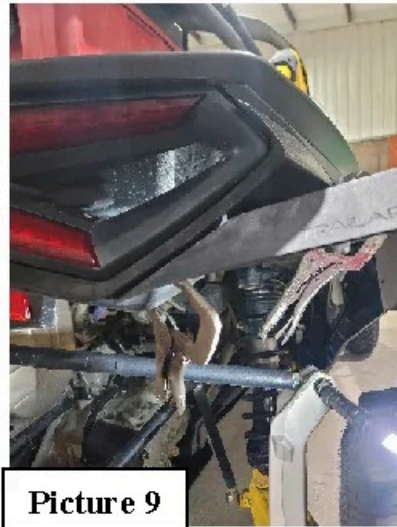


TRAILARMOR.COM
839 HWY 2 CORINTH, MS 38834
(662) 233-5700

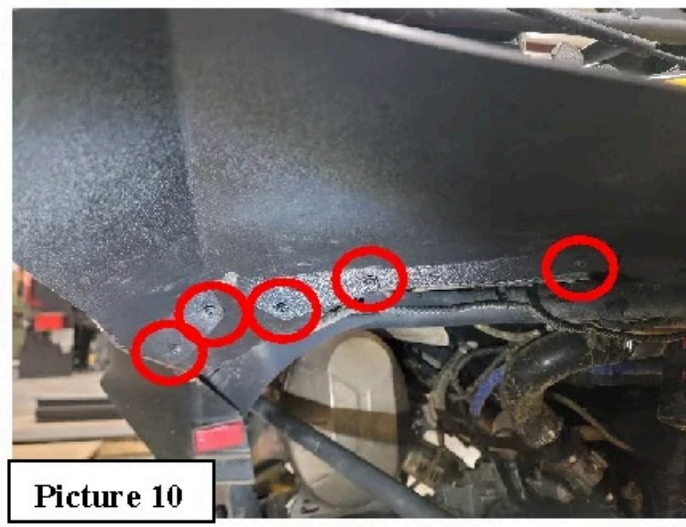
Installation Instructions



Picture 8



Picture 9



Picture 10



Final Install



Final Install

To Install Front Extensions:

- H. Locate the Passenger side front fender extension. Also, locate and remove the (1) OEM screw shown in picture 11. Holding the extension into position, install (1) M6-1.0x25mm bolt (100286) into the bottom hole of the extension. See Picture 12.



Picture 11



Picture 12



Picture 13



Picture 14



TRAILARMOR.COM
839 HWY 2 CORINTH, MS 38834
(662) 233-5700

Installation Instructions

- I. Align the fender extension with the contour of the OEM fender shown in Picture 13. Using a 5/16" drill bit, drill the hole also shown in Picture 13. Install (1) push pin (**100218**). See Picture 14.
- J. Holding the fender extension into position drill and insert (1) push pin (**100218**) shown in Picture 15.
- K. Continue holding fender extension in position and drill the remaining (6) holes and insert (6) push pins (**100218**). See Picture 16.
- L. Repeat steps H through K for the driver's side.

