



RAVEK

KAWASAKI RIDGE 2024+

PLUG & PLAY AUTO-CANCEL UTV TURN SIGNAL KIT

Part #: 67-4001 Fitment: KAWASAKI RIDGE 2024+



Ratchet



*10mm Deep
Well Socket*



*Small Flathead
Screwdriver*



*Phillips
Screwdriver*



*Side Cutter
Pliers*



*3/4"
Socket*



*Razor
Blade*

PARTS INCLUDED

- **Controller (1X)**
- **Horn (1X)**
- **Power Harness (1X)**
- **Turn Switch (1X)**
- **Horn/Hazards Switch (1X)**
- **Switch Extension Harness (2X)**
- **Rear Harness (1X)**
- **License Plate Harness (1X)**
- **License Plate Illuminator (1X)**
- **Dash Indicator Harness (2X)**
- **Dielectric Grease (1X)**
- **Apex Light (2X)**
- **Wire Ties (20X)**
- **Adhesive Promoter Wipe (3X)**
- **Rubbing Alcohol Wipe (3X)**
- **Rear Extension Harness (1X)**

INSTALL VIDEO TUTORIAL

**CALL US WITH ANY
QUESTIONS: 855-617-2787**



STEP BY STEP GUIDE

1) REMOVE HOOD



2) CAREFULLY PRY SWITCH PANEL OFF



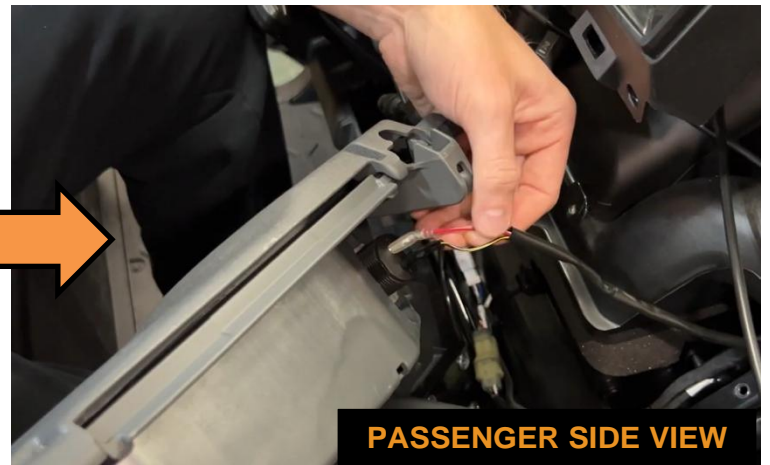
3) UNPLUG SWITCH PANEL TO REMOVE



4) REMOVE DRIVER'S SIDE DASH



5) REMOVE PASSENGER'S SIDE DASH



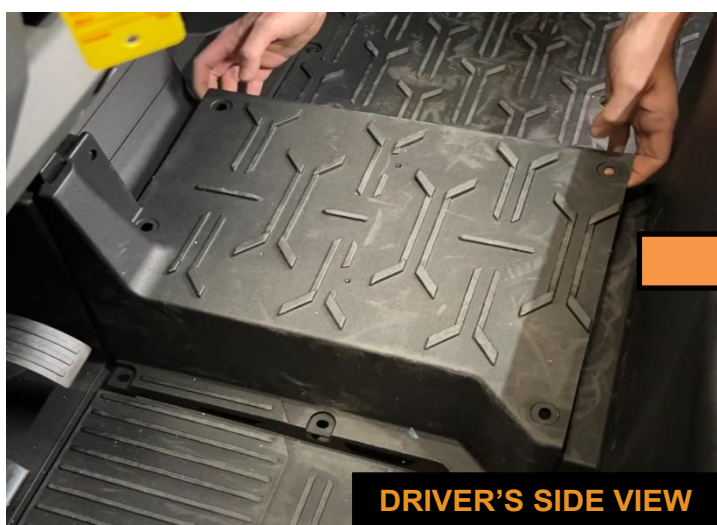
6) REMOVE STEERING WHEEL



7) REMOVE STEERING SHAFT SHROUD



8) REMOVE CENTER TUNNEL PANELS



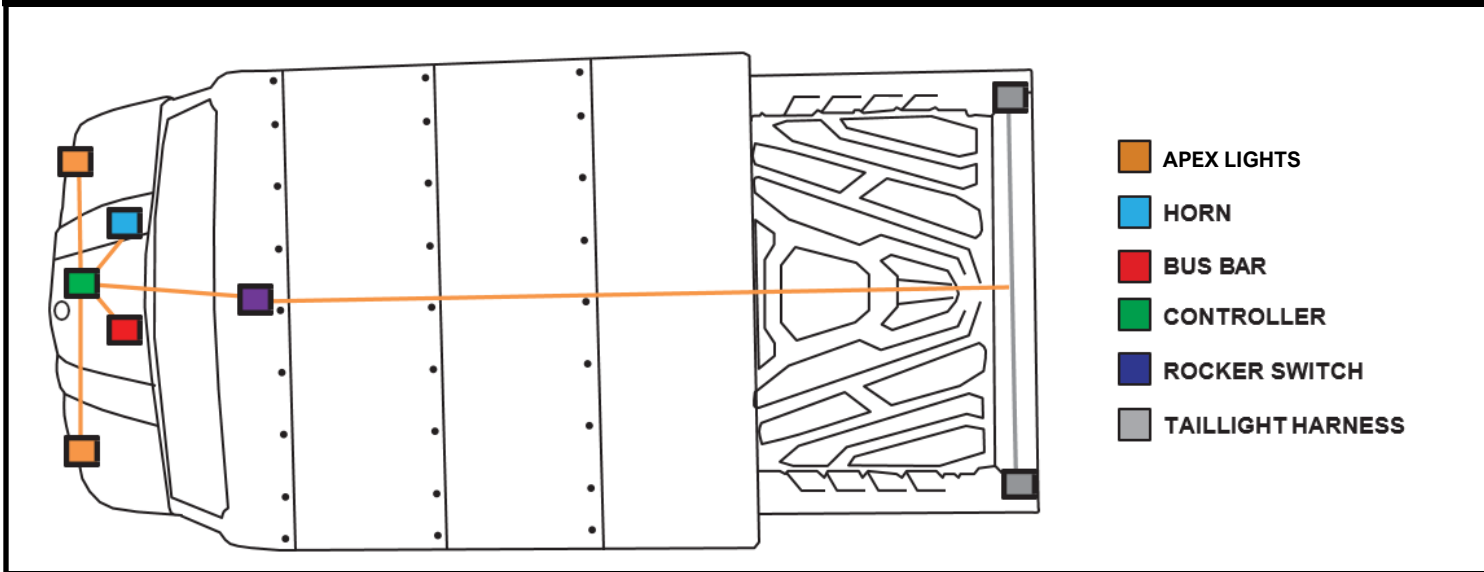
9) ACCESS BUS BAR



10) CUT TWO SWITCH KNOCKOUTS



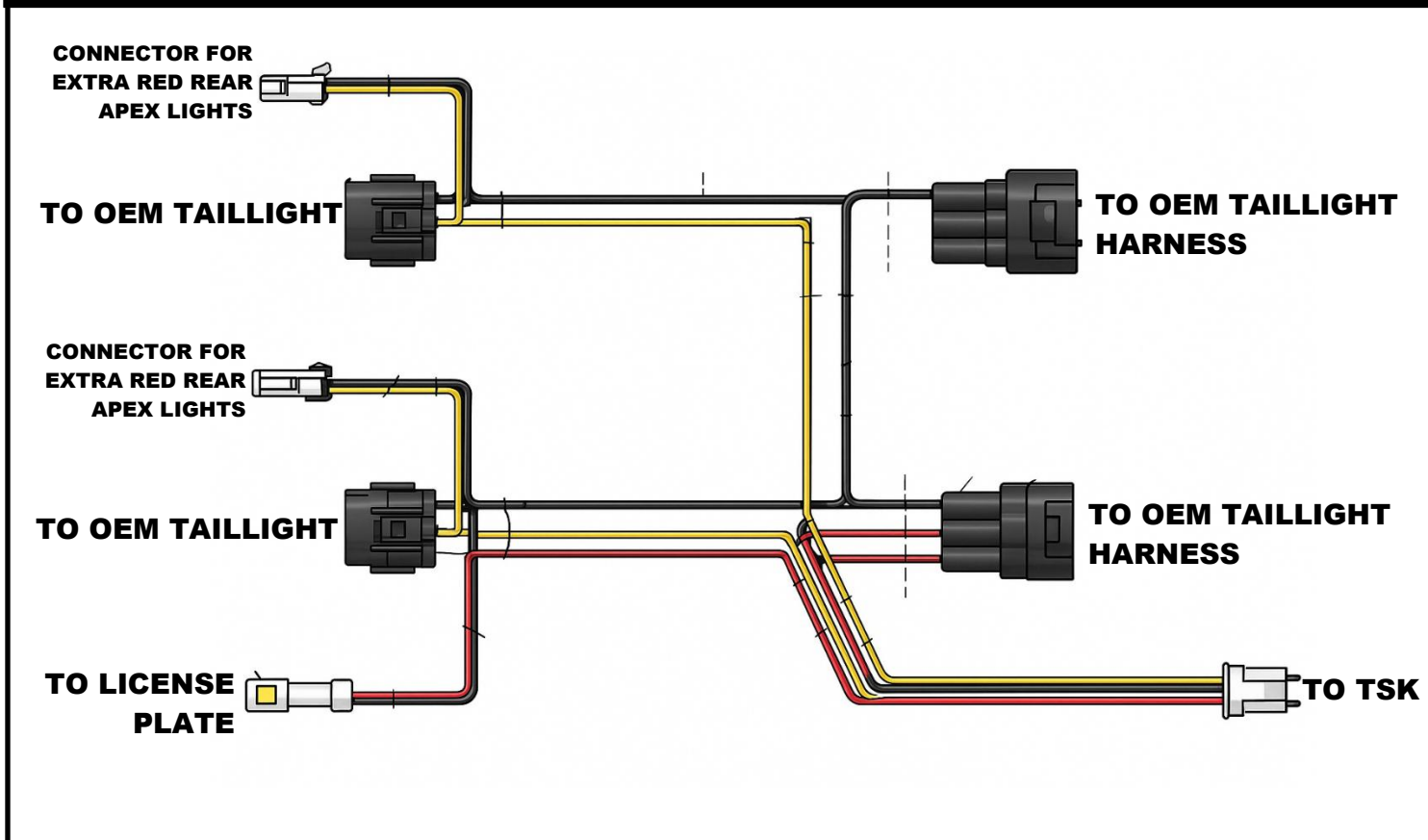
11) ROUTE WIRING AS SHOWN



WARNING:

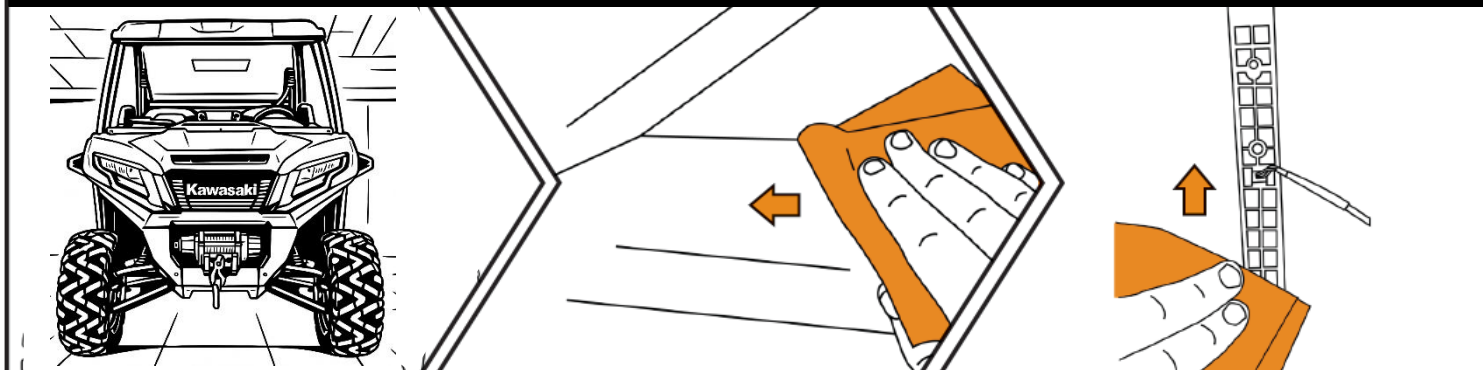
ENSURE ALL WIRING IS ROUTED AWAY FROM THE DRIVESHAFT, AS WELL AS ANY HOT OR MOVING COMPONENTS.

12) PLUG IN REAR HARNESS AS SHOWN

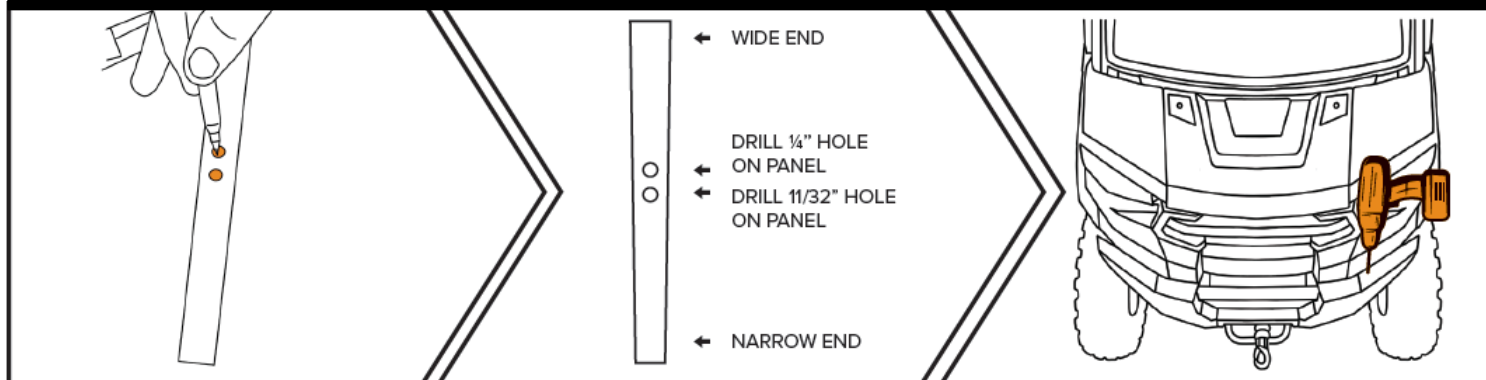


13) INSTALL APEX LIGHTS

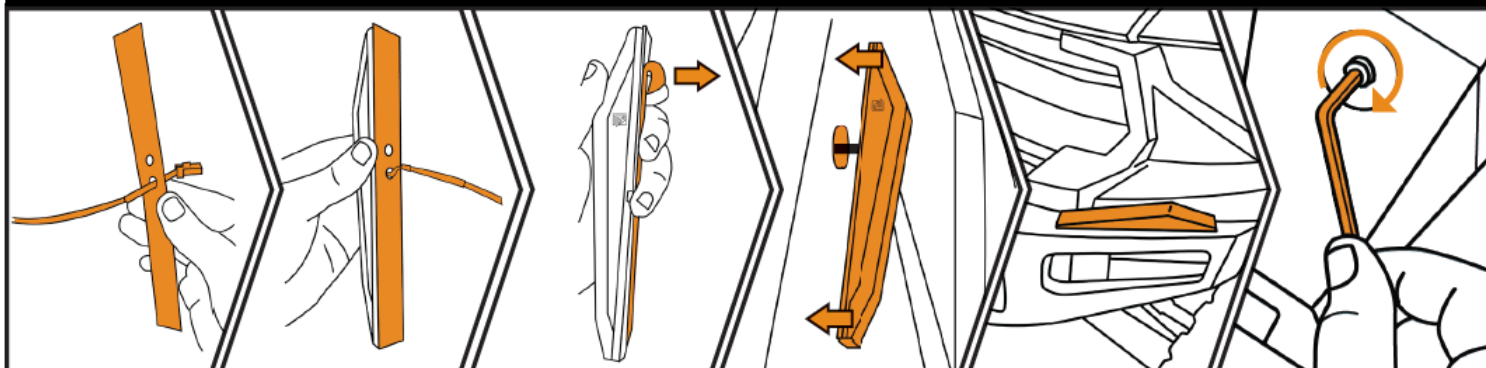
PREP APEX LIGHT MOUNTING SURFACE



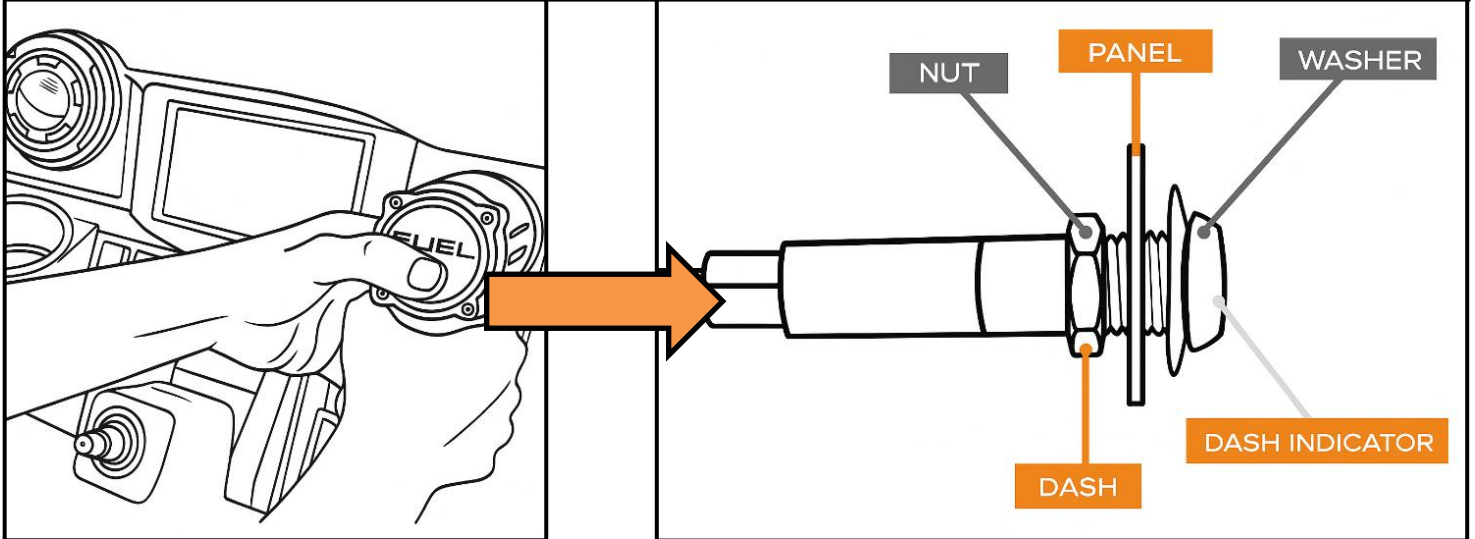
DRILL APEX LIGHT MOUNTING SURFACE



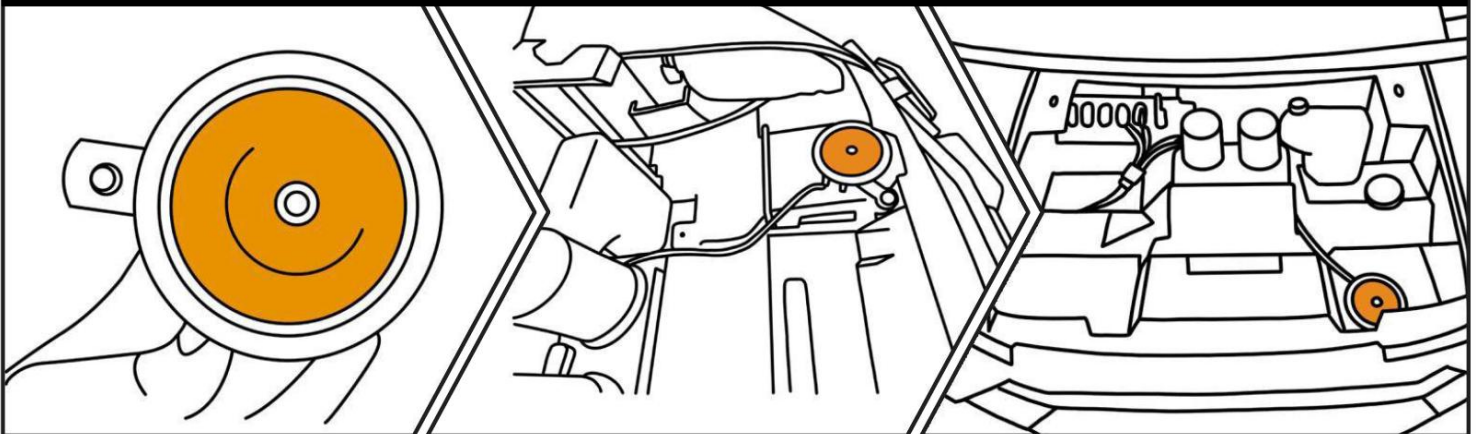
STICK APEX LIGHTS TO MOUNTING SURFACE AND TIGHTEN HARDWARE



14) DRILL & INSTALL DASH INDICATORS



15) INSTALL HORN REUSING OEM HARDWARE

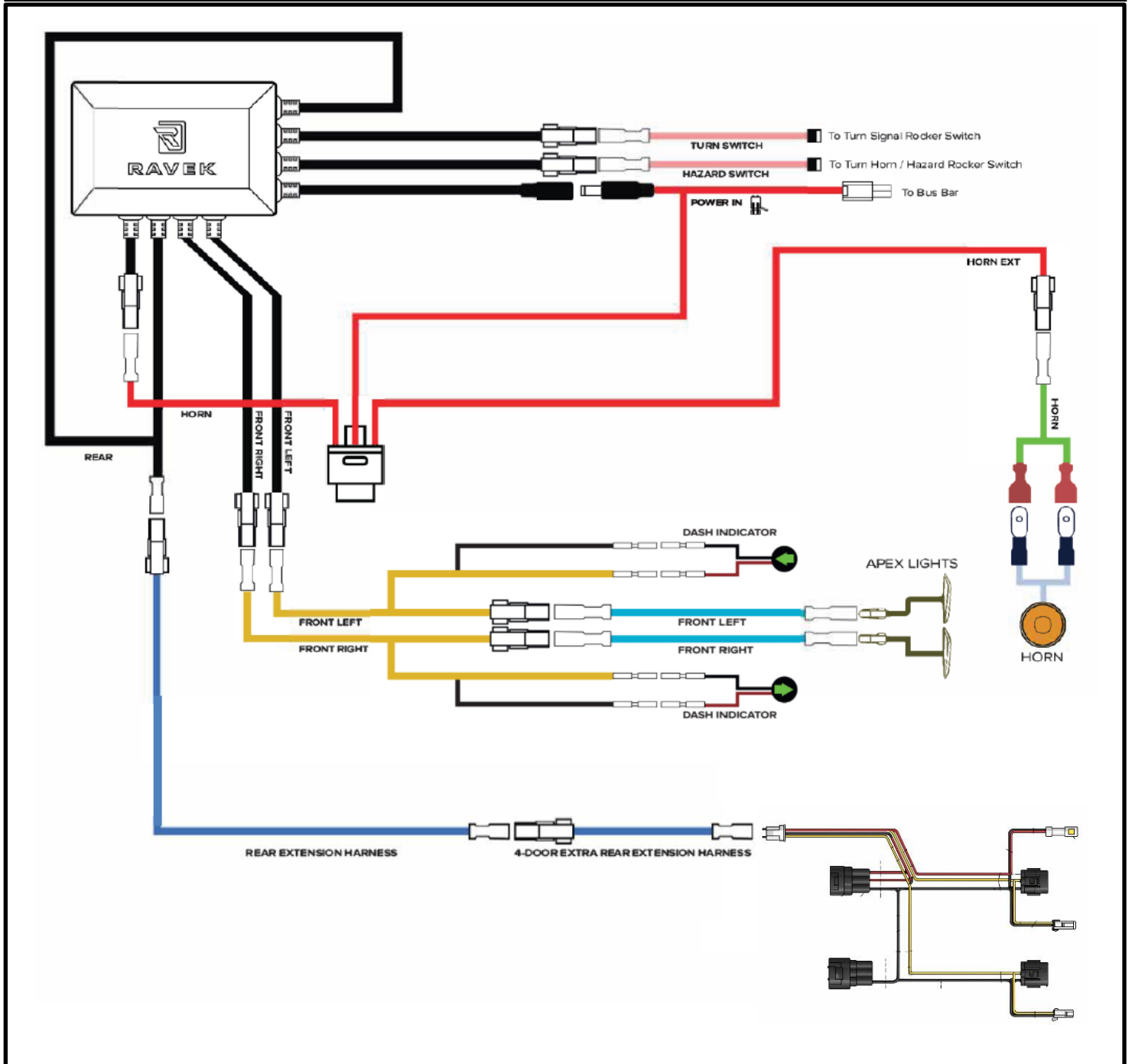


16) TEST YOUR TSK & TIDY UP YOUR MACHINE



- Running brake lights
- Running white lights
- Brake light with pulse effect
- Left turn signal:
 - Push Once: Activates a 20-second auto-cancel timer.
 - Push Twice: Extends the timer to 40 seconds.
 - Push Three Times: Sets the timer to 90 seconds.
- Left turn signal dash indicator
- Right turn signal:
 - Push Once: Activates a 20-second auto-cancel timer.
 - Push Twice: Extends the timer to 40 seconds.
 - Push Three Times: Sets the timer to 90 seconds.
- Right turn signal dash indicator
- Hazards
- Horn

16) TSK WIRING DIAGRAM OVERVIEW





WHY RAVEK

Stock UTVs don't come with enough storage, lighting, comfort, and protection. That's why we started RAVEK.

We live to design, manufacture, and test innovative SxS upgrades that elevate the riding experience. Here's what you can expect from us:

- Durable products built to last (100% lifetime guarantee)
- UTV upgrades thoughtfully designed & tested by riders
- Outstanding installation support (videos & USA customer service)
- Constant flow of epic riding content (check out our social media)

We're confident your RAVEK product will earn its place on your machine. Please call or e-mail us if we can help.

- Harry & Ricky (Brothers & Owners)

MESSAGE FROM THE DESIGNER

All UTVs come without turn signals, and even though you can ride them on the road, people need to make hand signals to indicate to other riders that you are making a turn! Not only is it tiring, but not safe!

That is why I created this kit: you can easily install a turn signal kit to your UTV, add some personality to your ride, and make your ride safe at any time of the day.