



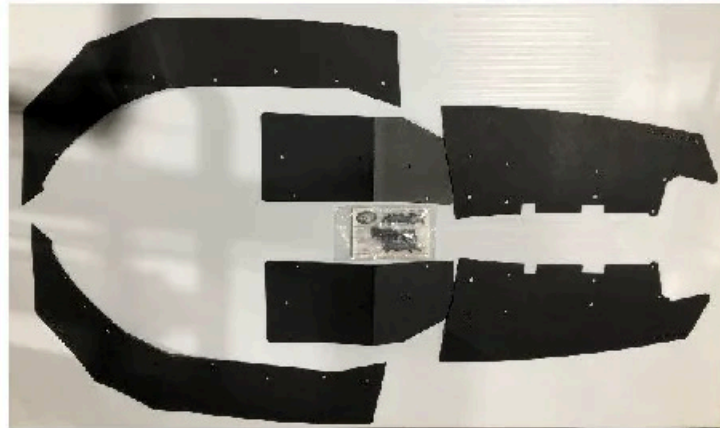
TRAILARMOR.COM
839 HWY 2 CORINTH, MS 38834
(662) 233-5700

Installation Instructions

Installation Instructions for Yamaha Wolverine RMAX 2 Mud Flap Fender Extensions **TAMFFE-YW-RMAX2**

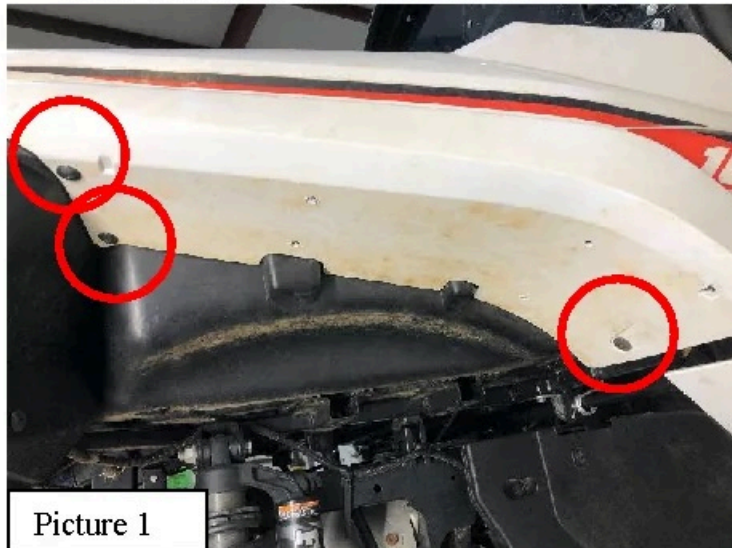
Warnings and Product Liability Disclaimer

This product is intended to be used as a cosmetic accessory under normal equipment operation and should not be depended upon or used as a safety device. Manufacturer assumes no liability for personal injury or equipment damage as the result of use or installation of this accessory. User assumes all risk. User should carefully read all instructions prior to installation. **PLEASE NOTE:** This product was designed, fit and tested on new vehicle specifications. Any damage, modifications or excessive wear to your vehicle may require modification to the product and/or your vehicle to ensure proper fitment.

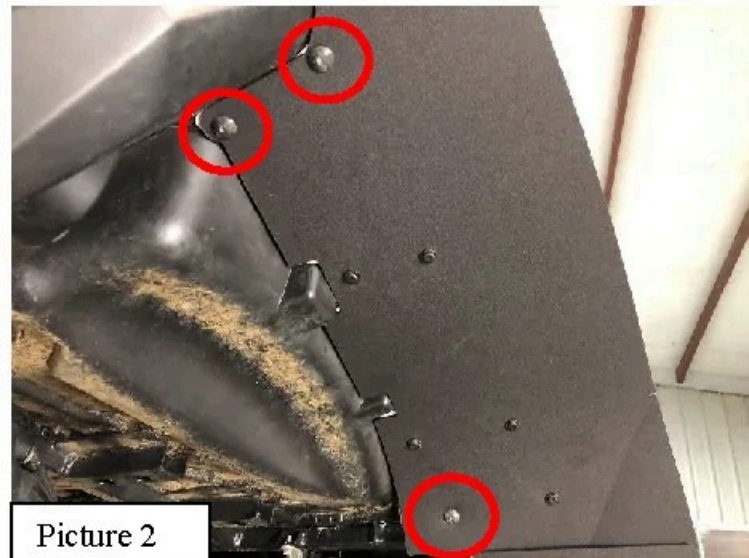


To Install Rear Underbed and Cab Extension:

- A. Locate three OEM screws from the passenger side rear fender well. Remove and retain as they will be reused. See Picture 1.



Picture 1



Picture 2

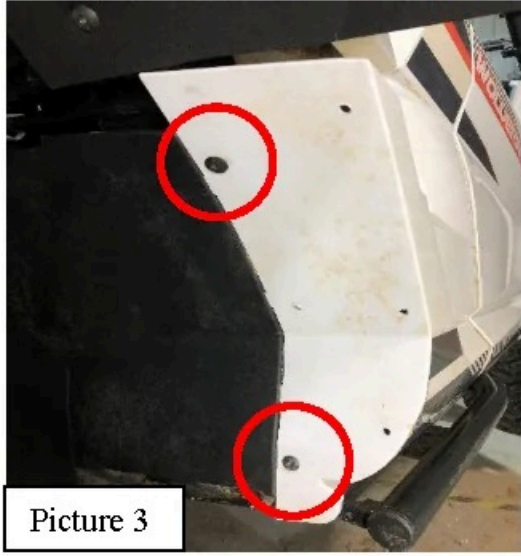
- B. Locate the Trail Armor passenger side rear underbed extension. Holding the extension into position, reinstall the three OEM screws through the pre-drilled holes of the extension as shown in Picture 2. Loosely tighten.



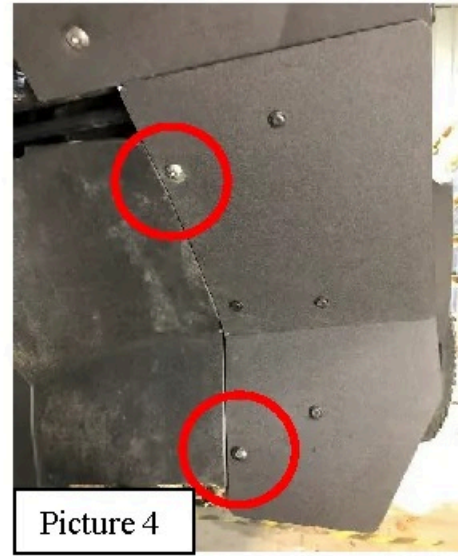
TRAILARMOR.COM
839 HWY 2 CORINTH, MS 38834
(662) 233-5700

Installation Instructions

- C. Locate and remove the two OEM screws in the front of the fender well. Retain as they will be reused. See Picture 3. Loosely tighten.

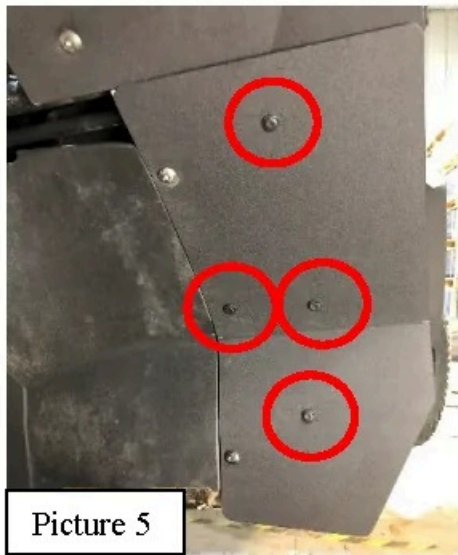


Picture 3

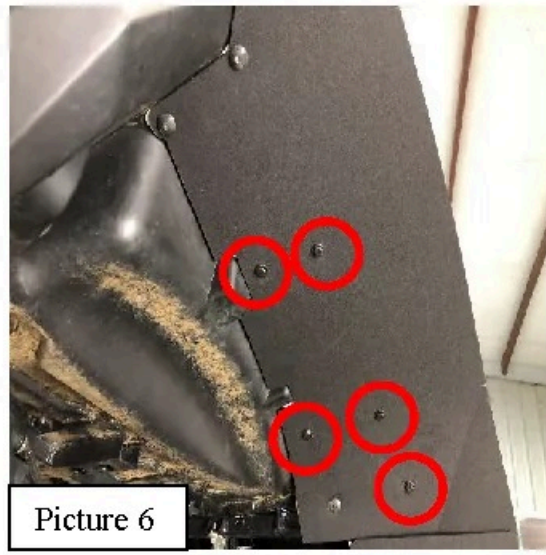


Picture 4

- D. Locate the passenger side cab panel. Holding the cab panel into position, insert the two OEM screws through the inside upper and lower holes of the panel. See Picture 4. Loosely tighten.
- E. Once fasteners are installed, align the outer edges of the underbed panel and the cab panel. Tighten all fasteners securely.
- F. Locate four supplied push pins. Using a 9/32 drill bit, drill through each of the remaining holes of the cab panel one at a time and insert a push pin into each of the holes. See Picture 5.



Picture 5



Picture 6

- G. Locate five supplied push pins. As done with the cab panel, drill through the pre-drilled holes of the extension and insert a push pin into each of the five remaining holes. See Picture 6. Repeat for the driver side.

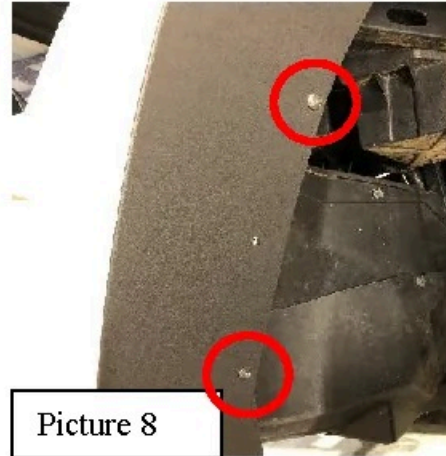
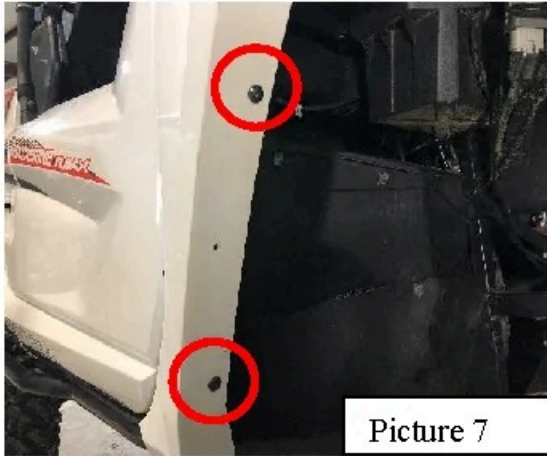


TRAILARMOR.COM
839 HWY 2 CORINTH, MS 38834
(662) 233-5700

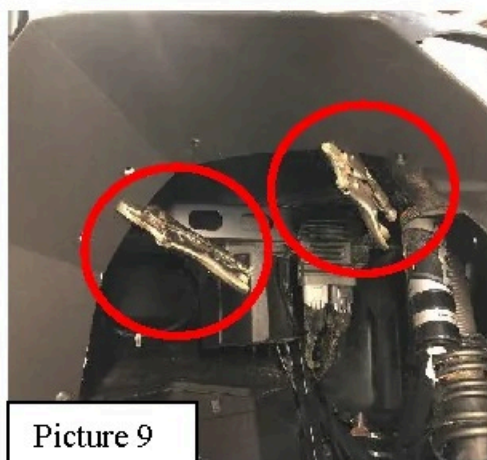
Installation Instructions

To Install Front Extension:

- H. Locate and remove the two OEM screws in the rear of the front fender well. Retain as they will be reused. See Picture 7.



- I. Locate the Trail Armor front passenger side extension. Holding the extension flush with the bottom of the rocker panel, reinstall the two OEM screws. See Picture 8.
- J. Once the OEM screws are installed, push the bends of the extension tight against the top of the fender well and align the inside of the extension. Also, check alignment of the front of the extension next to the headlight trim. Using vise grips or clamps, temporarily secure the extension. See Pictures 9 and 10.



- K. The hole in the very front of the extension is critical so make sure the extension is positioned so that the screw will go through the factory fender well. See Picture 11.



TRAILARMOR.COM
839 HWY 2 CORINTH, MS 38834
(662) 233-5700

Installation Instructions

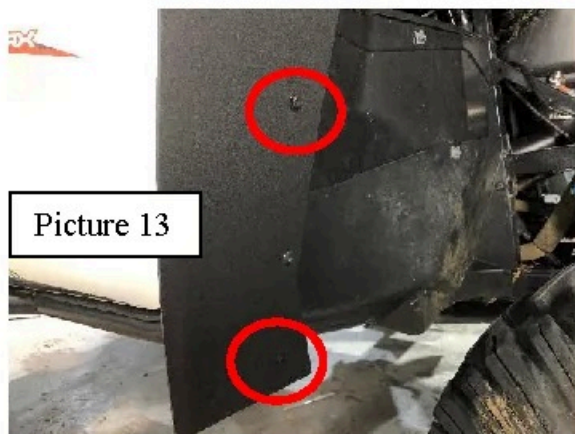


Picture 11

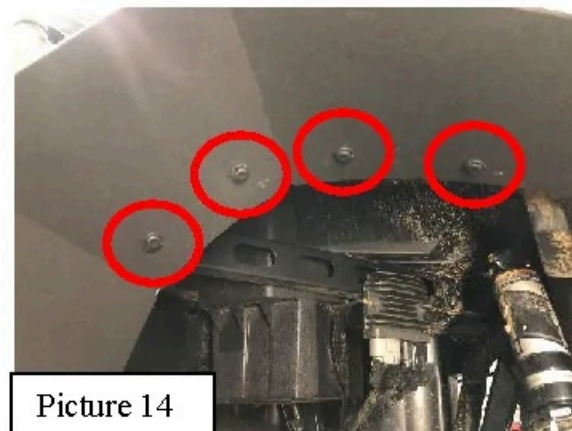


Picture 12

- L. Once all alignments are done, locate one supplied #10 x 3/4" Phillips washer head screw and one rectangular speed nut. Insert the Phillips head screw through the front hole of the extension into the factory fender well. See Picture 12. Back the screw out until the point of the screw is flush with the inside of the fender. Position the speed nut over the point of the screw and tighten.
- M. Recheck alignment of the extension and the inside of the factory fender.
- N. Locate six supplied push pins. As done on the rear, drill through the remaining holes of the extension one at a time and insert the push pins. See Pictures 13 and 14. Repeat for the driver side.



Picture 13



Picture 14

Enjoy! Any questions, contact Trail Armor at 662-233-5700 or www.trailarmor.com.