



K45-0824221

Complete Radius Rod Kit,
Intense Series,
Can-am Maverick R, 2024-



Please retain this document for future reference

If your Zbroz® product has a damaged or missing part, please contact customer service directly and a new replacement part will be sent to you immediately.

For warranty issues, please return to the place of installation and contact Zbroz®.

Business hours are Monday through Friday 8am – 4pm MST.

Phone: (435) 753-7774

Email: customerservice@zbrozracing.com

Website: www.zbrozracing.com

LIMITED LIFETIME WARRANTY

Zbroz® builds suspension products to meet and exceed your expectations in quality, performance and durability. All Zbroz® suspension products are rigorously tested during the development process and prototype parts are pushed to the limit by professional industry athletes, backcountry athletes and race teams. Zbroz® limited lifetime warranty excludes the following wear parts as these parts are considered defective when worn: Ball Joints, Bushings, Bump Stops, Tie Rod Ends, Heim Joints.

Shock Absorber products purchased directly from Zbroz® have a 90 day return policy on uninstalled products from the date of purchase (may be subject to restocking fee). Uninstalled product returns must be in the original Zbroz® packaging. Please call (435) 753-7774 to get an RMA# for any return. Customer is responsible for shipping costs back to Zbroz®. Returns without RMA# will be refused.

Contact Zbroz® directly about any potential defective parts prior to removal from vehicle.

Zbroz® is NOT responsible for any subsequent damages to any related vehicle parts due to misuse, abuse, improper installation, or lack of maintenance. Furthermore, Zbroz® reserves the right to change, modify or cancel this warranty without prior notice.

FOLLOW INSTRUCTIONS TO ENSURE PROPER INSTALLATION

READ INSTRUCTIONS THOROUGHLY AND COMPLETELY BEFORE BEGINNING INSTALLATION. INSTALLATION BY A CERTIFIED PROFESSIONAL MECHANIC IS HIGHLY RECOMMENDED. ZBROZ® IS NOT RESPONSIBLE FOR ANY DAMAGE OR FAILURE RESULTING FROM IMPROPER INSTALLATION.

TOOLS:

21mm Socket, Ratchet, 21mm end wrench, 19mm Socket, 19mm End Wrench, Butane Torch

PARTS:

Upper Radius Rods, Middle Radius Rods, Lower Radius Rods, Reducers and Heim Joints

WARNING

- ° **MISUSE OF THIS PRODUCT COULD LEAD TO INJURY OR DEATH.** You should never operate your vehicle under the influence of alcohol or drugs. All raised vehicles have an increased risk of blind spots; damage, injury and/or death can occur if these instructions are not followed.
- ° Suspension systems or components that enhance the on and off-road performance of your vehicle may cause it to handle differently than it did from the factory. Extreme care must be used to prevent loss of control or vehicle rollover during abrupt maneuvers.
- ° Always operate your vehicle at reduced speeds to ensure your ability to control your vehicle under all driving conditions. Failure to drive safely may result in serious injury or death to driver and passengers. You should never operate your vehicle under the influence of alcohol or drugs.
- ° Driver and passengers must ALWAYS wear your seat belts, avoid quick sharp turns and other sudden maneuvers. Zbroz® does not recommend the combined use of suspension lifts, body lifts, or other lifting devices.
- ° Constant maintenance is required to keep your vehicle safe. Thoroughly inspect your vehicle before and after every off-road use.
- ° It is the responsibility of the retailer and/or the installer to review all state and local laws, with the end user of this product, related to bumper height laws and the lifting of their vehicle before the purchase and installation of any Zbroz® products.
- ° It is the responsibility of the driver to check their surrounding area for obstructions, people, and animals before moving the vehicle.
- ° All raised vehicles have increased blind spots: damage, injury and/or death can occur if these instructions are not followed.
- ° All steps and procedures described in these instructions were performed while the vehicle was properly supported on a two post vehicle lift with safety jacks.
- ° Use caution during all disassembly and assembly steps to insure suspension components are not over extended causing damage to any vehicle components and parts included in this kit.
- ° Included instructions are guidelines only for recommended procedures and are not meant to be definitive. Installer is responsible to insure a safe and controllable vehicle after performing modifications.
- ° Zbroz® recommends the use of an OE Service Manual for model/year of vehicle when disassembly and assembly of factory and related components.
- ° Unless otherwise specified, tighten all bolts and fasteners to standard torque specifications listed within the OE Service Manual.
- ° Suspension components that use rubber or urethane bushings should be tightened with the vehicle at normal ride height, this will prevent premature wear or failure of the bushing and maintain ride comfort.
- ° Larger tire and wheel combinations may increase leverage on suspension, steering and related components.
- ° Due to payload options and initial ride height variances, the amount of lift is a base figure. Final ride height dimensions may vary in accordance to original vehicle ride height. Always measure the vehicle ride height prior to beginning installation.

Vehicle Handling Warning

° Increasing the height of your vehicle raises the center of gravity and can affect stability and control. Use caution on turns and when making steering corrections.

° Vehicles with larger tires and wheels will handle differently than stock vehicles. Take time to familiarize yourself with the handling of your vehicle.

Wheel / Headlight alignment and safety/security system

° It is necessary to have a proper and professional wheel alignment performed by a certified alignment technician. Align the vehicle to factory specifications. It is recommended that your vehicle alignment be checked after any off-road driving.

° In addition to your vehicle alignment, for your safety and others, it is necessary to check and adjust your vehicle headlamps for proper aim and alignment.

° If the vehicle is equipped with active or passive safety/collision monitoring and/or avoidance systems including, but not limited to, camera- or radar-based systems, check and adjust your vehicle's systems for proper aim and function.

° By installing this product, you acknowledge that the suspension of this vehicle has been modified. As a result, this vehicle may handle differently than that of factory-equipped vehicles. As with any vehicle, extreme care must be used to prevent loss of control or roll-over during sharp turns or abrupt maneuvers. Always wear seat belts, and drive safely, recognizing that reduced speeds and specialized driving techniques may be required. Failure to drive this vehicle safely may result in serious injury or death. Do not drive this vehicle unless you are familiar with its unique handling characteristics and are confident of your ability to maintain control under all driving conditions. Some modifications (and combinations of modifications) are not recommended and may not be permitted in your state. Consult your owner's manual, the instructions accompanying this product, and state laws before undertaking these modifications. You are responsible for the legality and safety of the vehicle you modify using these components.

° Start by lifting the rear of the Car up, Lift high enough to have both rear wheels off the ground.

° Remove rear wheels. (Pic #1)

° Remove Radius Rod bolts & nuts out near wheels first. (Pic #2)

Can-am's Loctite is super strong, use a butane torch on the nuts for 15-20 seconds before removing the nut.

° Middle Radius rod has a tapered fit. With the nut removed, Use a hammer on the spindle to loosen it. (Pic #3)

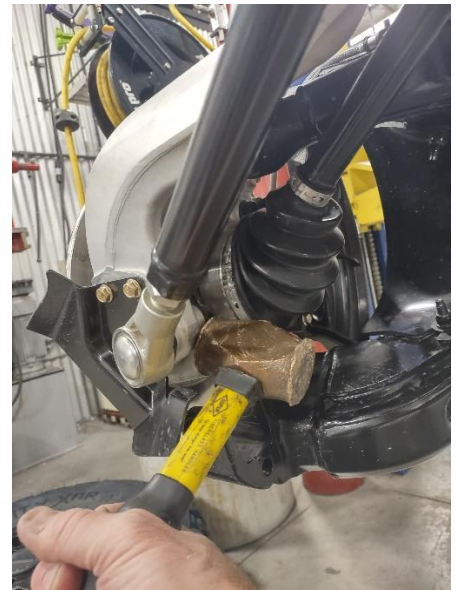
Pic #1



Pic #2

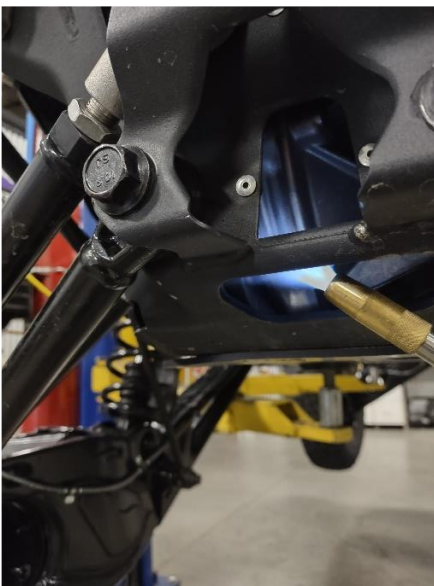


Pic #3



° Then heat and remove the radius rod bolts & nuts from the frame, (Pic #4)

Pic #4



Pic #5



° When installing the new Zbroz Radius Rods, re heat the nuts and tighten to stock torque specs.

° to adjust toe on the rear wheels, use the middle radius rod. Loosen pinch bolts and move adjuster sleeve near frame of car. (Pic #5)

° Note: Zbroz builds and sells a new nut plate for the Frame side of the Maverick R. The stock Nut can twist off the Nut plate. (Kit# K89-0824970)

° with the radius rods tightened to stock torque spec, install & torque wheels and lower Maverick R.