



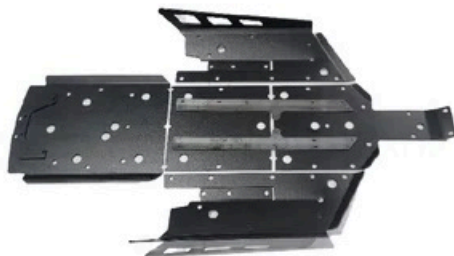
TRAILARMOR.COM
839 HWY 2 CORINTH, MS 38834
(662) 233-5700

Installation Instructions

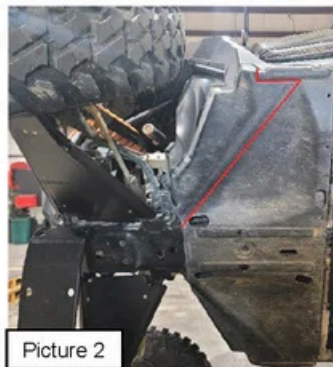
Installation Instructions for Trail Armor Polaris RZR 1000 XP Full Skids TA012FULLSKID-RZR1K-24

Warnings and Product Liability Disclaimer

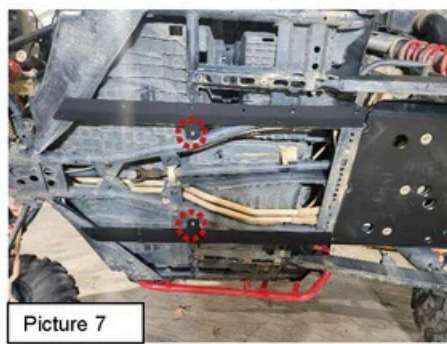
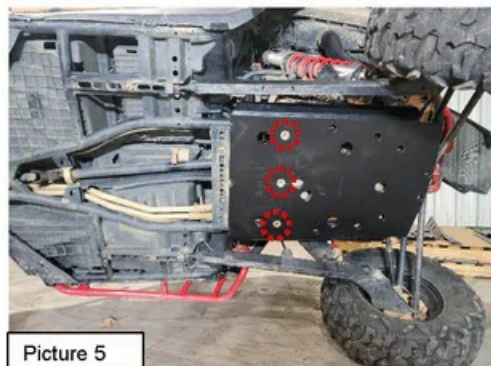
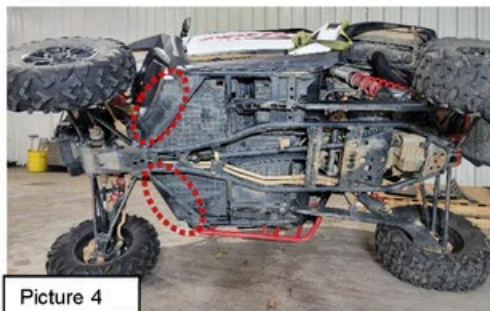
This product is intended to be used as a cosmetic accessory under normal equipment operation and should not be depended upon or used as a safety device. Manufacturer assumes no liability for personal injury or equipment damage as the result of use or installation of this accessory. User assumes all risk. User should carefully read all instructions prior to installation.



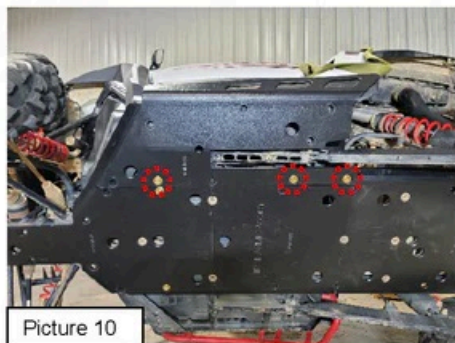
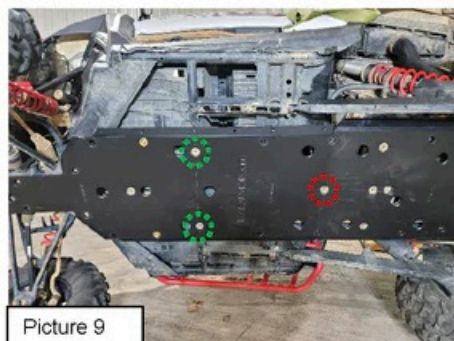
- To ease installation, gently tip the vehicle onto its side and support securely with a safety stand.
- Remove all Factory skids (Picture 1) and keep the front section of the OEM skid.
- On the front OEM skid mark a line as shown in (Picture 2 **in red**) and cut this piece to use again. Do this on both sides. (Picture 3).



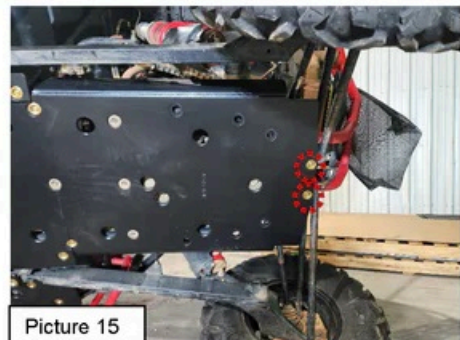
- D. Locate the modified front OEM skid pieces. Reinstall both sides using the removed hardware. (Picture 4).
- E. Locate Panel C and install it with (3) OEM bolts and washers. (Picture 5).
- F. Next locate the metal slider brackets. One will have a D cut into it and that is for the Driver side. The other will have a P cut into it and that is for the Passenger side. Locate and install (8) u-nuts (**100110**). Install the u-nuts on the slotted holes in the bracket (4) per side. See (Picture 6) for orientation of u-nuts.
- G. Install the Driver side slider bracket with (1) OEM bolt. Next install the Passenger side slider bracket with (1) OEM bolt. (Picture 7).



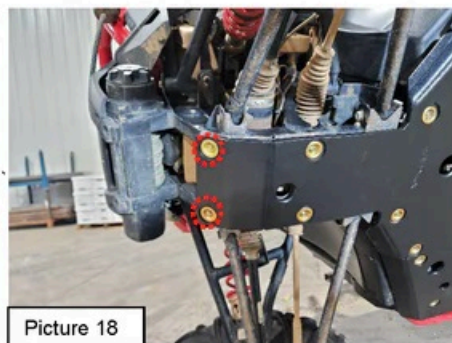
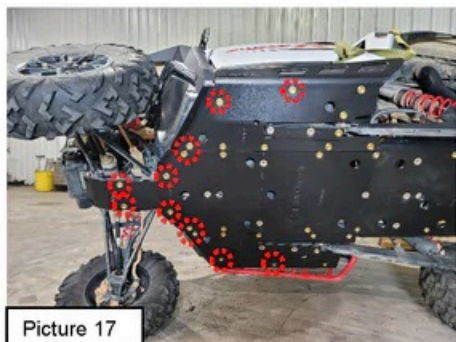
- H. Locate Panel A and install it with (1) OEM bolt and washer. (Picture 8 in Red). Also insert (2) 1" Serrated flange bolts (100048) and (2) Bowl washers (100087). (Picture 8 in Green).
- I. Locate Panel B and install it with (1) OEM bolt and washer. (Picture 9 in Red). Also remove one at a time the OEM bolts holding the sliders in place and reinstall with an OEM washer. (Picture 9 in Green).
- J. Locate Panel D and install with (3) 1/4-20x1 Serrated Flange bolts (100048) and (3) Bowl washers (100087) (Picture 10).
- K. Locate Panel E and install with (3) 1/4-20x1 Serrated Flange bolts (100048) and (3) Bowl washers (100087) (Picture 11).



- L. Locate (2) rectangle pieces with D and P engraved on them. Install the D on the driver side with (2) OEM bolts and washers. Install the P on the passenger side with (2) OEM bolts and washers. (Picture 12).
- M. Locate (12) 1" TEK screws (**100054**) and (12) Bowl washers (**100087**) and install per (Picture 13).
- N. Locate the Spacer engraved XP1K-S-D and install it with (2) 2" TEK screws (**100103**) and (2) Bowl washers (**100087**). (Picture 14 and 15).
- O. Locate and insert (6) 1-½" TEK screws (**100056**) and (6) Bowl washers (**100087**) into the locations shown. (Picture 16).



- P. Locate and insert (12) 1-½" TEK screws (**100056**) and (12) Bowl washers (**100087**) into the locations shown. (Picture 17).
- Q. Locate and insert (2) 1" TEK screws (**100054**) and (2) Bowl washers (**100087**) in the front of Panel A. (Picture 18).



- R. See Picture 19 for Final Install.

