



**Installation Instructions for
iMpacT A-Arm Boot Guards for Polaris Ranger 1500 Extreme Duty
TA011ARMIMP-PR1500XD**

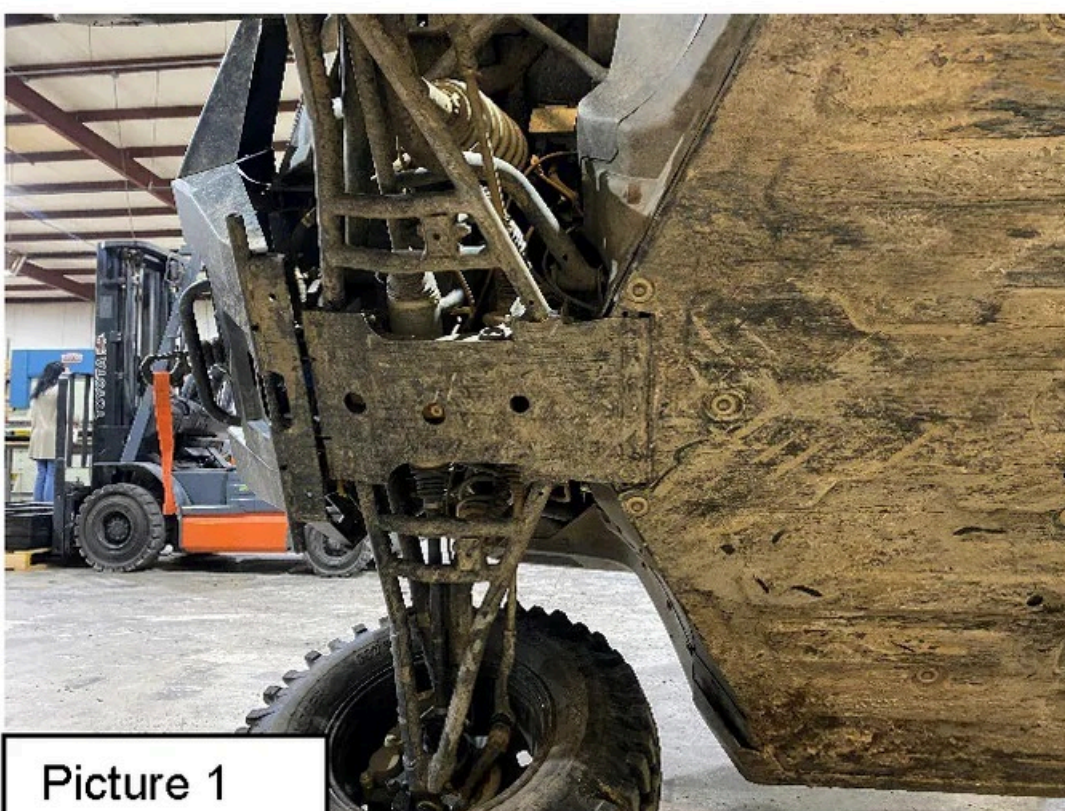
Warnings and Product Liability Disclaimer

This product is intended to be used as a cosmetic accessory under normal equipment operation and should not be depended upon or used as a safety device. Manufacturer assumes no liability for personal injury or equipment damage as the result of use or installation of this accessory. User assumes all risk. User should carefully read all instructions prior to installation.

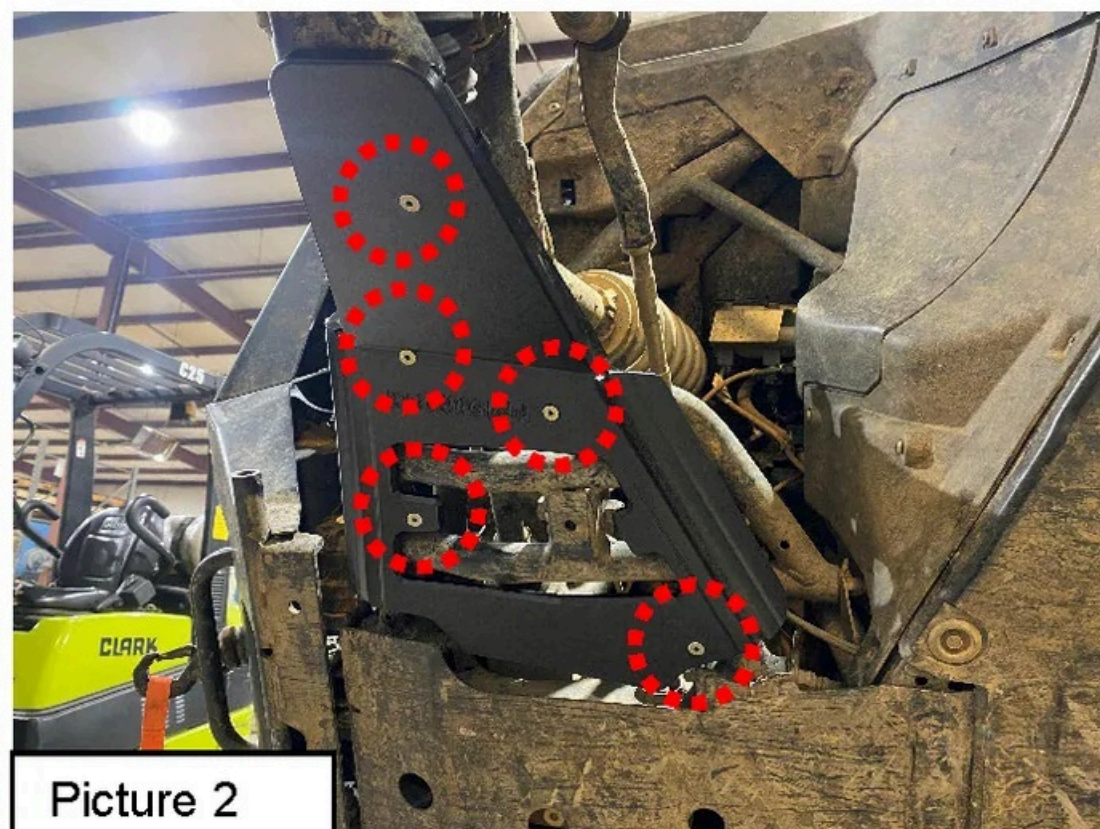


Remove tires prior to beginning for easier installation. Always secure vehicle with safety stands.

For Front Guards



Picture 1



Picture 2

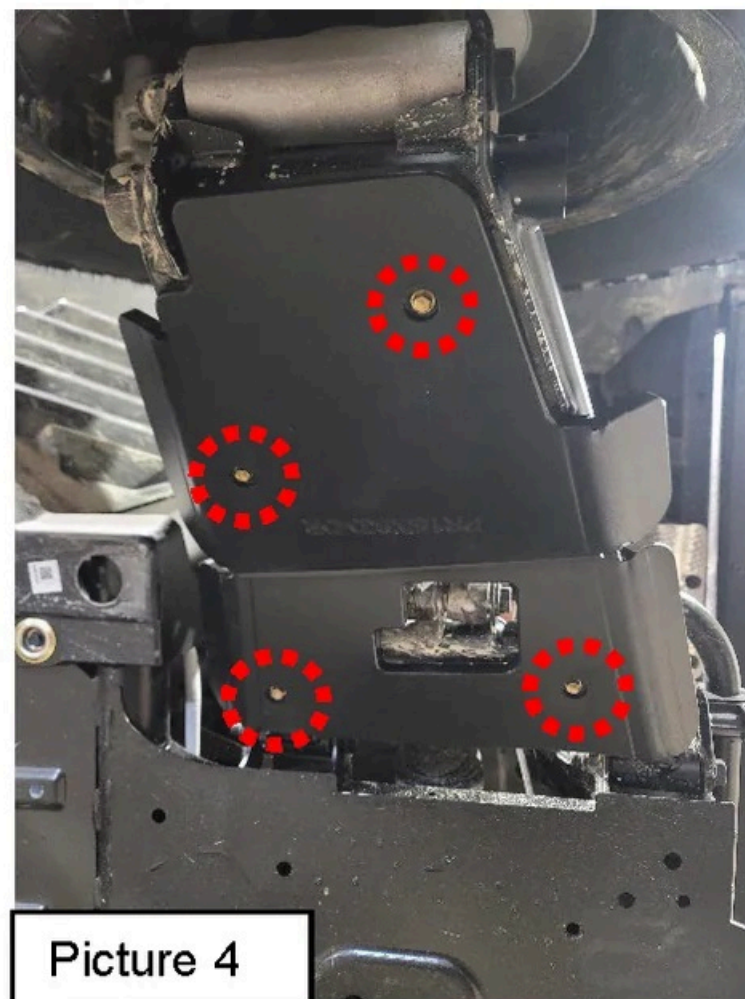
- A. Place (5) 1 ¼" P-Clamps onto the A-arm in the locations of the A-arm guard holes. Then place the Driver front A-arm guard (PR1500XD-DF) into the proper location using clamps or by hand.
- B. Insert (5) 1 ¼" Flat head screws through the A-arm guard and through the P-clamps then secure with (5) nylock nuts. Once aligned tighten all hardware. Tighten the hole on the tab last. (Picture 2).
- C. Repeat for Opposite side.

For Rear Guards

- D. Place the Driver rear A-Arm guard (PR1500XD-DR) into location then attach with (4) 1 ¼ TEK screws. If you have trouble with screws pre-drill the holes first. (Pictures 3 & 4).
- E. Repeat for Opposite side.



Picture 3



Picture 4

- F. See Pictures 5 & 6 for Final Install.



Picture 5



Picture 6