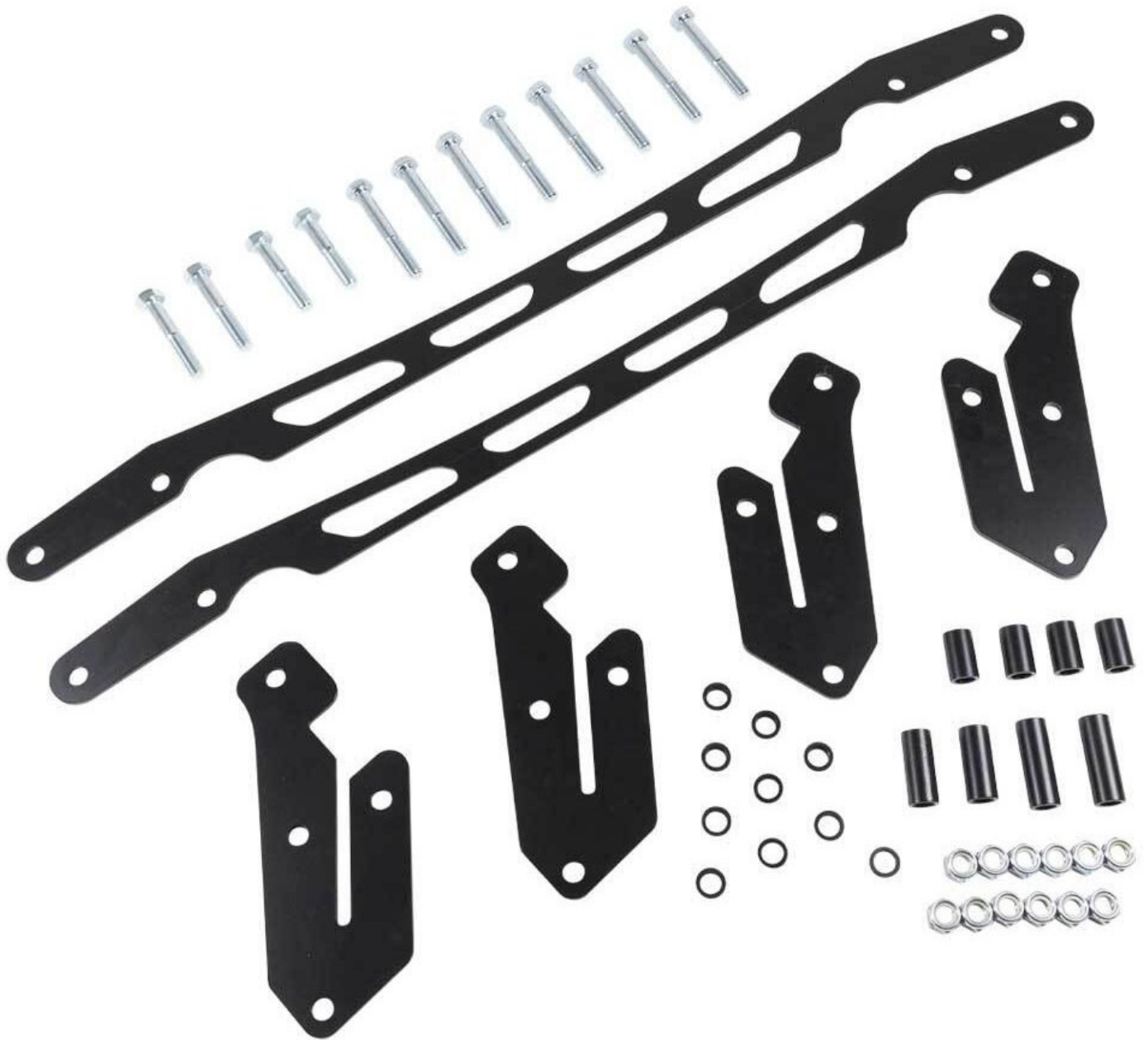




K10-0122751-01 Honda Pioneer Bracket Lift Kit



INTRODUCTION

PLEASE RETAIN THIS DOCUMENT FOR FUTURE REFERENCE

If your ZBROZ® product has a damaged or missing part, please contact customer service directly and a new replacement part will be sent to you immediately.

For warranty issues, please return to the place of installation and contact ZBROZ®.

Business hours are Monday through Friday 8AM-5PM MST.

PHONE: (435) 753-7774

EMAIL: customerservice@zbrozracing.com

WEBSITE: www.zbrozracing.com

LIMITED LIFETIME WARRANTY

ZBROZ® will warranty to the original purchaser any failed ZBROZ® suspension product in the event of failure due to construction or material failure of the product. You will be required to contact ZBROZ® customer service with descriptions and photos that resulted in failure.

ZBROZ® builds suspension products to meet and exceed your expectations in quality, performance and durability. All ZBROZ® suspension products are rigorously tested during development and prototype parts are pushed to the limit by professional industry athletes, backcountry athletes and race teams. ZBROZ® Limited Lifetime Warranty excludes the following wear parts as these parts are considered defective when worn: Ball Joints, Bushings, Bump Stops, Tie Rod Ends, Heim Joints, Shock Absorbers Product purchased directly from ZBROZ® has a 90 day return policy on uninstalled products from the date of purchase (may be subject to restocking fee). Uninstalled product returns must be in the original ZBROZ® packaging. Please call (435) 753-7774 to get an RMA# for any return. Customer is responsible for shipping costs back to Zbroz Racing. Returns without RMA# will be refused. Contact ZBROZ® directly about any potentially defective parts prior to removal from vehicle.

ZBROZ® is NOT responsible for any subsequent damages to any related vehicle parts due to misuse, abuse, improper installation, or lack of maintenance. Furthermore, ZBROZ® reserves the right to change, modify or cancel this warranty without prior notice.

FOLLOW INSTRUCTIONS TO ENSURE PROPER INSTALLATION

READ INSTRUCTIONS THOROUGHLY AND COMPLETELY BEFORE BEGINNING INSTALLATION. INSTALLATION BY A CERTIFIED PROFESSIONAL MECHANIC IS HIGHLY RECOMMENDED. ZBROZ® IS NOT RESPONSIBLE FOR ANY DAMAGE OR FAILURE RESULTING FROM IMPROPER INSTALLATION.

TOOLS:

- 17mm End Wrench (1)
- 17mm Socket (1)
- 19mm Socket (1)
- 19mm Open End Wrench (1)
- Ratchet (1)
- short extension (1)
- Flathead Screwdriver (1)
- Phillips Screwdriver (1)
- Needle Nose Pliers (1)

PARTS:

- Front Lift Bracket (2)
- Rear Lift Bracket (4)
- Spacer 2 1/8" (2)
- Spacer 1 3/4" (2)
- Spacer 1 1/4" (4)
- Spacer 3/8" (4)
- Spacer 1/4" (6)
- 85mm Bolt (8)
- 70mm Bolt (2)
- 65mm Bolt (2)
- Nylock Nut (12)

Step 1 — K10-0122751-01 Honda Pioneer Bracket Lift Kit



WARNING

- **MISUSE OF THIS PRODUCT COULD LEAD TO INJURY OR DEATH.** You should never operate your vehicle under the influence of alcohol or drugs. All raised vehicles have increased risk including blind spots; damage, injury and/or death can occur if these instructions are not followed.
- Suspension systems or components that enhance the on and off-road performance of your vehicle may cause it to handle differently than it did from the factory. Extreme care must be used to prevent loss of control or vehicle rollover during abrupt maneuvers.
- Always operate your vehicle at reduced speeds to ensure your ability to control your vehicle under all driving conditions. Failure to drive safely may result in serious injury or death to driver and passengers. You should never operate your vehicle under the influence of alcohol or drugs.
- Driver and passengers must **ALWAYS** wear your seat belts, avoid quick sharp turns and other sudden maneuvers. ZBROZ® does not recommend the combined use of suspension lifts, body lifts, or other lifting devices.

- Constant maintenance is required to keep your vehicle safe. Thoroughly inspect your vehicle before and after every off-road use.
- It is the responsibility of the retailer and/or the installer to review all state and local laws, with the end user of this product, related to bumper height laws and the lifting of their vehicle before the purchase and installation of any ZBROZ® products.
- It is the responsibility of the driver to check their surrounding area for obstructions, people, and animals before moving the vehicle.

Step 2



WARNING

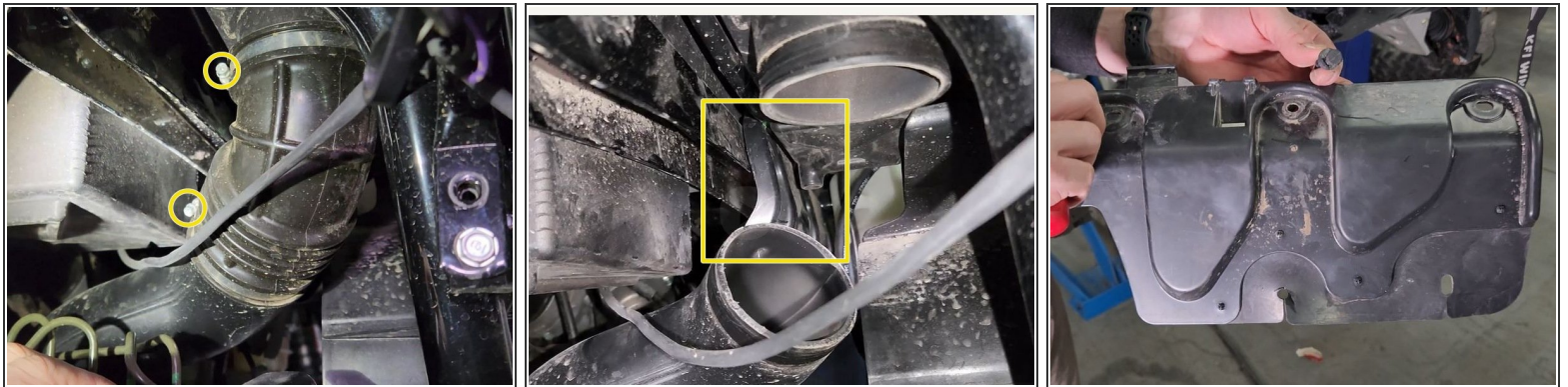
- Use caution during all disassembly and assembly steps to insure not to cause damage to any vehicle components and parts included in this kit.
- Included instructions are guidelines only for recommended procedures and are not meant to be definitive. Installer is responsible to insure a safe and controllable vehicle after performing modifications.
- ZBROZ® recommends the use of an OE Service Manual for model/year of vehicle when disassembly and assembly of factory and related components.
- Unless otherwise specified, tighten all bolts and fasteners to standard torque specifications listed within the OE Service Manual.

Step 3 — Provided Hardware



- Insert wisdom here.

Step 4



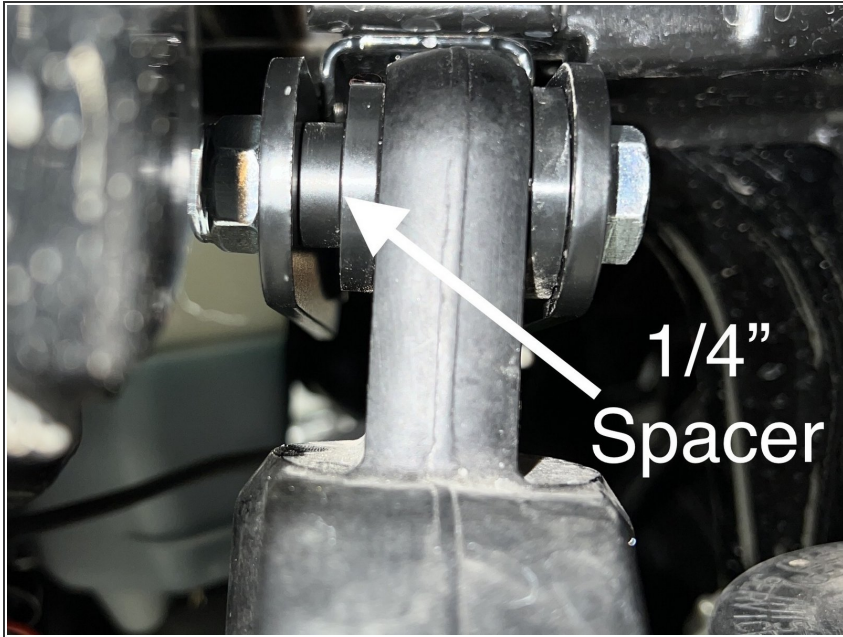
- Using a floor jack or lift, raise the front of your Honda Pioneer off the ground and remove the wheels and tires.
- Use a 17mm to remove the upper shock mount. It is not necessary to remove the lower shock mount but doing so will provide more working room.
- With the shock out of the way, use your phillips screwdriver and remove **IMAGE 1** the air intake elbow. as shown in the image. This step may not be necessary but it provides more room to get the brackets in place.
- **IMAES 2 and 3** Next, use your flathead screwdriver or your locator removal tool and remove the 3 push button locators that hold your fan shroud cover to the frame.

Step 5



- **IMAGE 1** Next place the front long lift bracket on the stock rear shock mount as shown in the image. Remember this bracket will follow through all the way to the opposite side.
- **IMAGE 2** Once you have the bracket in place, locate the shortest provided bolt and place it through the new lift bracket and the stock shock mount. As you do this place the 1 3/4" spacer into the stock shock location. Do not place the nut on the bolt at this time. Repeat this step on the opposite side.
- **IMAGE 3** Now slide the other front long bracket onto the opposite side of the stock shock bracket. Slide the new provided bolt all the way through and secure using a new provided nut. Tighten using a 19mm. Repeat this step on the opposite side.

Step 6



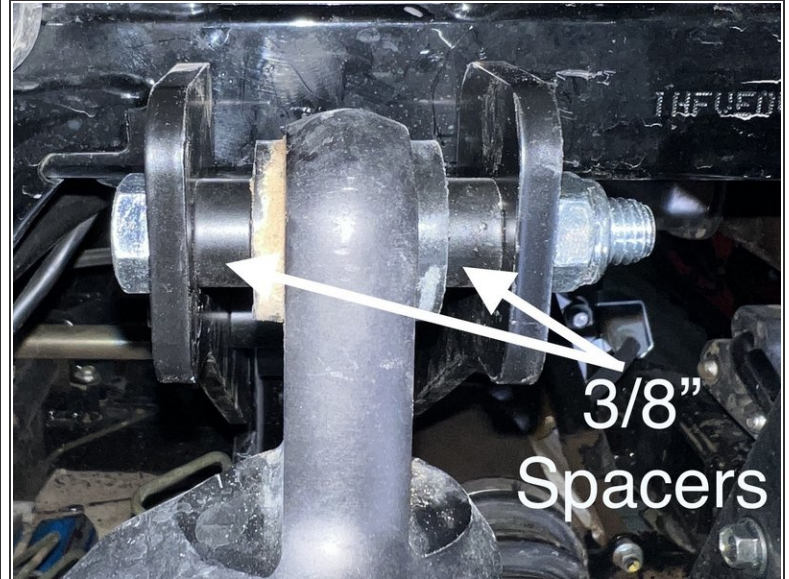
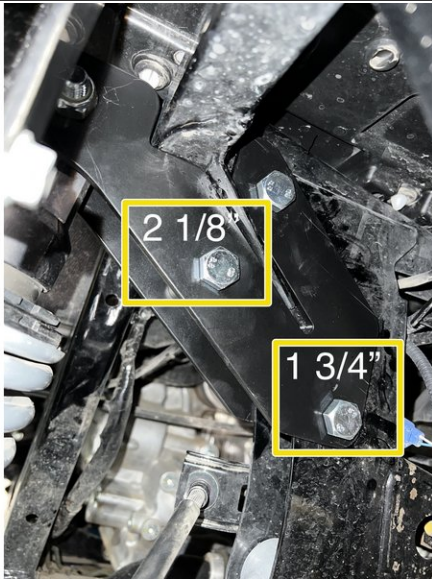
- Once you have the front brackets in place you can replace the fan shroud if you choose but, it is necessary to replace the air intake elbow that was previously removed.
- **IMAGE 1** With everything in place, locate the medium length provided bolt and 1 of the 1/4" inch spacers and secure the shock into the new shock mount location as shown in the image. The spacer will go towards the front of the vehicle. Repeat on the opposite side and torque to spec.
- Replace the wheels and tires and move to the rear of the vehicle.

Step 7



- With rear of the vehicle off the ground. remove the wheels and tires as well as the shocks using a 17mm.
- **IMAGE 1** Locate one of the 4 rear brackets (the rear brackets are all the same.) Place one of the longest provided bolts through the hole that matches up with the stock shock location. **SEE IMAGE**. Now place one of the 1/4" spacers on that bolt and slide the bracket onto the frame. The bracket is slotted in order to fit around the frame.
- **IMAGE 2** See photo for bracket location. The opposite side brackets will install the same way.
- As you put the bracket on the frame, Place a 1 1/4" spacer into the stock shock mount location and slide the bolt all the way through as shown in **IMAGE 3**. Once the bolt is all the way through place another 1/4" spacer on the end of the bolt. (This is important do to the curvature of the frame.)
- Locate another rear bracket and place on the opposite side of the bracket that is on the frame. Secure using a provided nut. Only secure hand tight at this moment.

Step 8



- **IMAGE 1** Place another one of the longest bolts through the lowest hole in the new brackets. as you do this place a 1 1/4" spacer onto the new bolt as you slide it through to the other side. Repeat this step on the bracket hole above using the 2 1/8" spacer.
- Once you have all three bolts in the correct locations with there corresponding spacers, tighten using the provided nuts and a 19mm. Repeat these steps on the opposite side.
- **IMAGE 2** Once you have the rear brackets installed. Reinstall the rear shocks. Using one of the longest provided bolts and 2 of the 3/8" spacers. Place the spacers on the outside of the shock eyelet as shown in the image. replace the rear wheels and tires and lower the vehicle.

By installing this product, you acknowledge that the suspension of this vehicle has been modified. As a result, this vehicle may handle differently than that of factory-equipped vehicles. As with any vehicle, extreme care must be used to prevent loss of control or roll-over during sharp turns or abrupt maneuvers. Always wear seat belts, and drive safely, recognizing that reduced speeds and specialized driving techniques may be required. Failure to drive this vehicle safely may result in serious injury or death. Do not drive this vehicle unless you are familiar with its unique handling characteristics and are confident of your ability to maintain control under all driving conditions. Some modifications (and combinations of modifications) are not recommended and may not be permitted in your state. Consult your owner's manual, the instructions accompanying this product, and state laws before undertaking these modifications. You are responsible for the legality and safety of the vehicle you modify using these components.