

POLARIS GENERAL

Rear Bumper

PART #101245

| Kit Components: | | |
|-----------------|------|--------------------------------------|
| Item # | Qty. | Description |
| 1 | 1 | Bumper |
| 2 | 1 | Driver Side Bracket |
| 3 | 1 | Passenger Side Bracket |
| 4 | 4 | Bumper Tube Cap |
| 5 | 1 | HK-387 |
| 5.1 | 6 | 5/16"-18 x .75 Carriage Bolt (Black) |
| 5.2 | 4 | 5/16"-18 x 3.50 Hex Bolt |
| 5.3 | 10 | 5/16"-18 Hex Flange Nylock Nut |
| 5.4 | 4 | 5/16" Flat Washer |

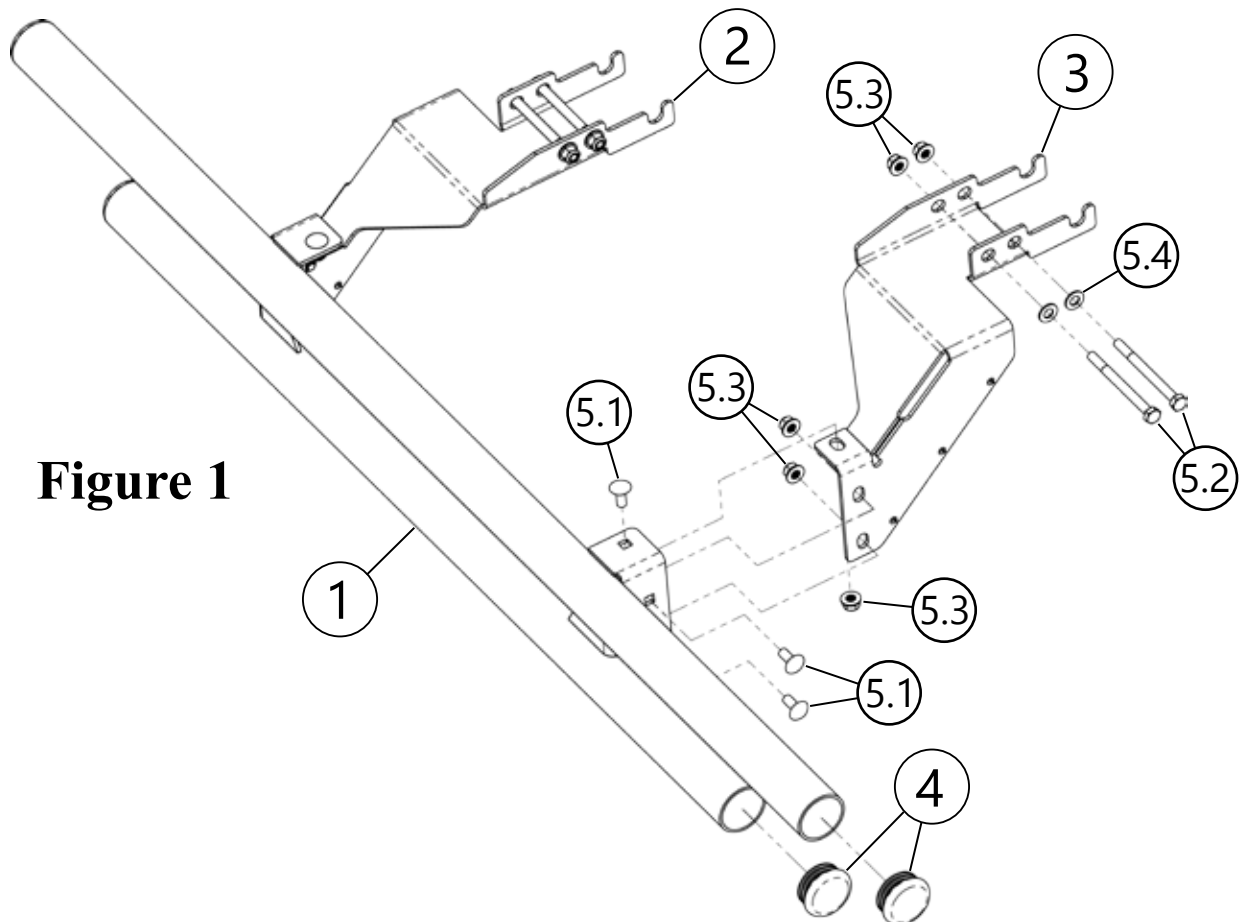


Figure 1



INSTALLATION INSTRUCTIONS

Note: Make sure all hardware needed to complete this mount is in the package. Thoroughly read through and understand the instructions before installing.

1. Assemble bumper tube caps (4) as shown in **Figure 1**.
2. Remove OEM hardware (A) from the bed hinge shown in **Figure 2**.
Note: Keep hardware (A) as it will be re-used in a later step.
3. Hold driver side bumper bracket (2) in place over bed hinge and loosely fasten using OEM hardware (A), bolts (5.2), washers (5.4), and nuts (5.3) as shown in **Figure 3 & 4**.
Note: Driver side shown. Repeat step 3 for passenger side bumper bracket (3).
4. Set bumper onto bumper brackets and secure using bolts (5.1) and nuts (5.3) as shown in **Figure 5**.
5. Tighten all hardware evenly.

Figure 2

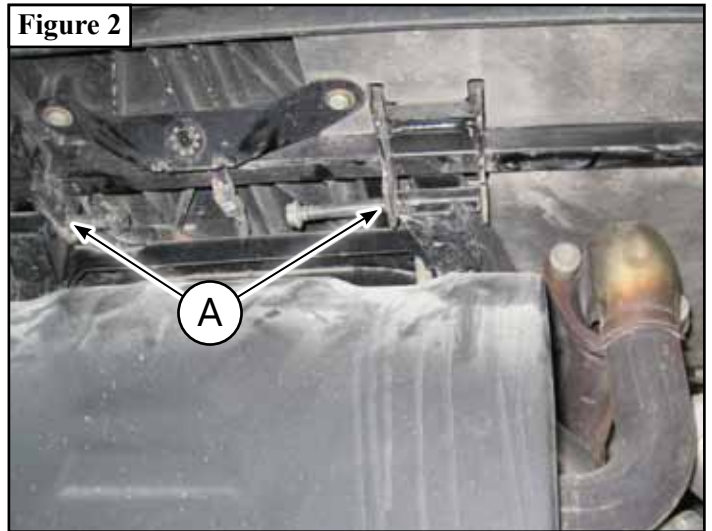


Figure 3

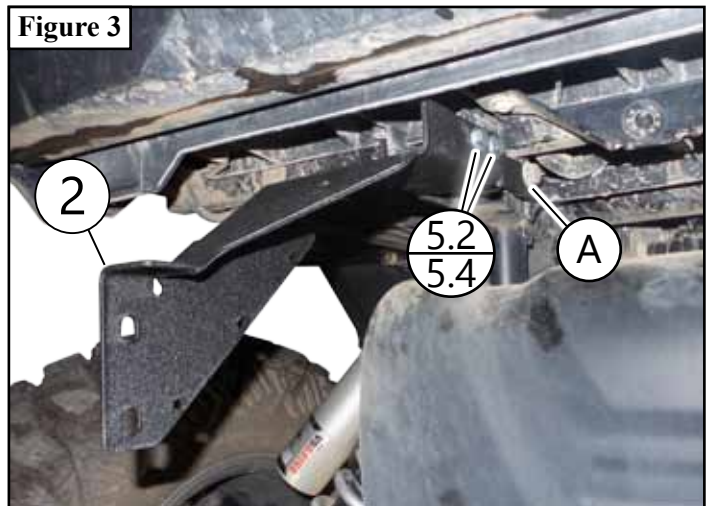


Figure 5

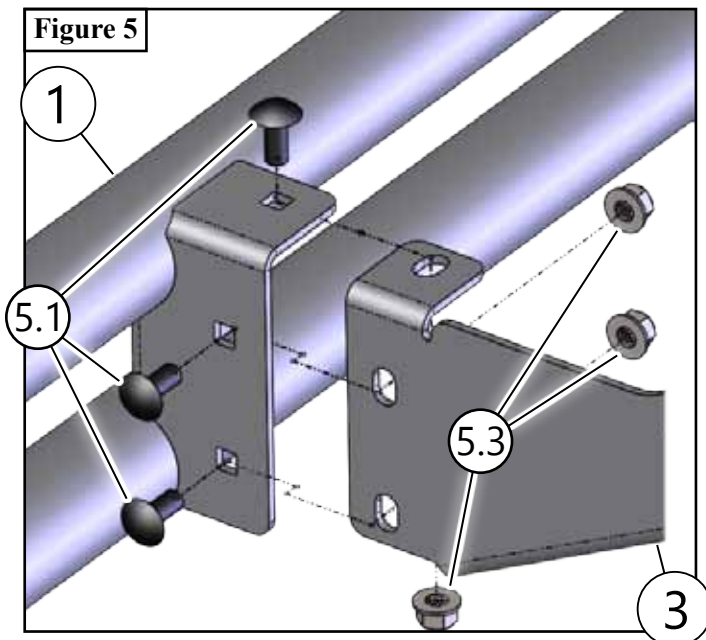


Figure 4

