



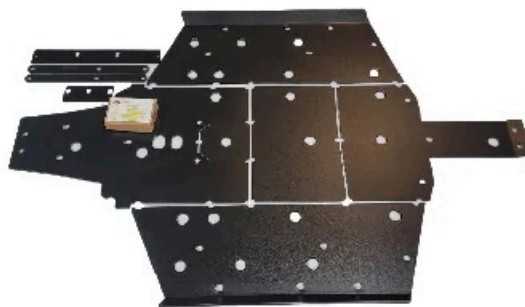
TRAILARMOR.COM
839 HWY 2 CORINTH, MS 38834
(662) 233-5700

Installation Instructions

Installation Instructions for Trail Armor Polaris Xpedition Full Skids TA012FULLSKID-XPEDITION

Warnings and Product Liability Disclaimer

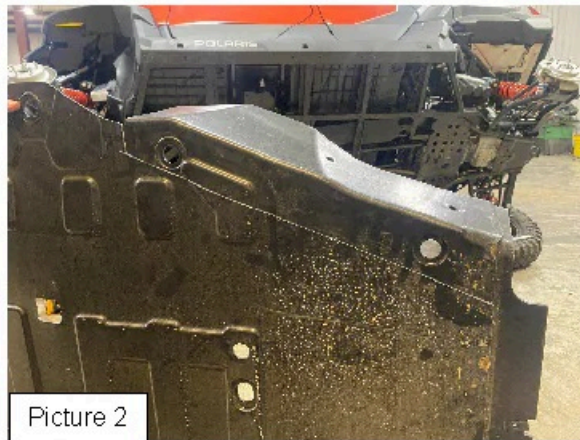
This product is intended to be used as a cosmetic accessory under normal equipment operation and should not be depended upon or used as a safety device. Manufacturer assumes no liability for personal injury or equipment damage as the result of use or installation of this accessory. User assumes all risk. User should carefully read all instructions prior to installation.



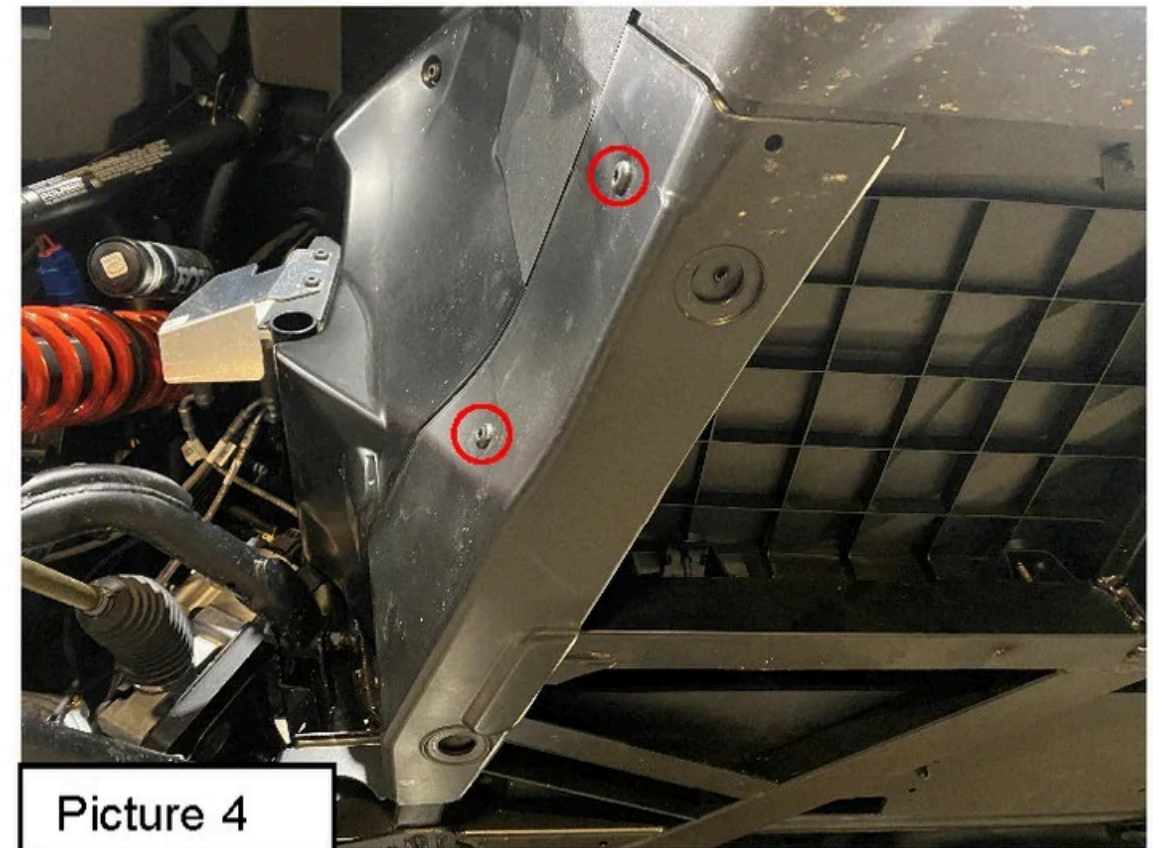
- A. To ease installation, gently tip the vehicle onto its side and support securely with a safety stand. (See Picture 1).
- B. Remove all Factory skids.
- C. On the front OEM skid mark a line (See Picture 2) and cut this piece to use again. Do this on both sides. (See Picture 3).



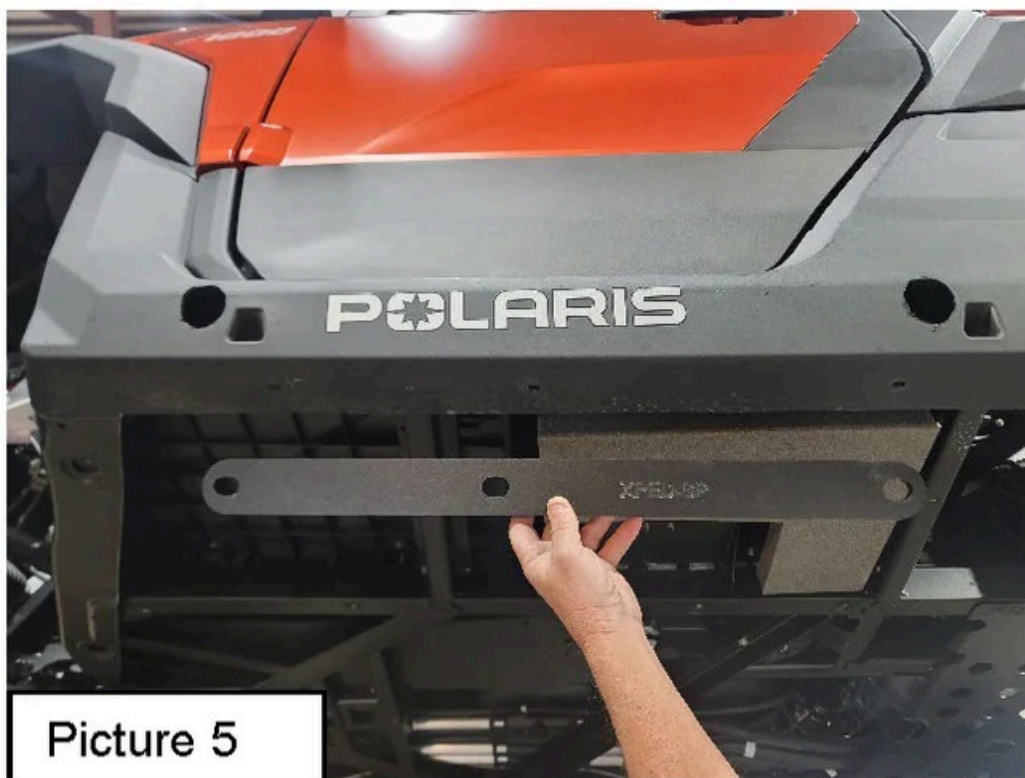
Picture 1



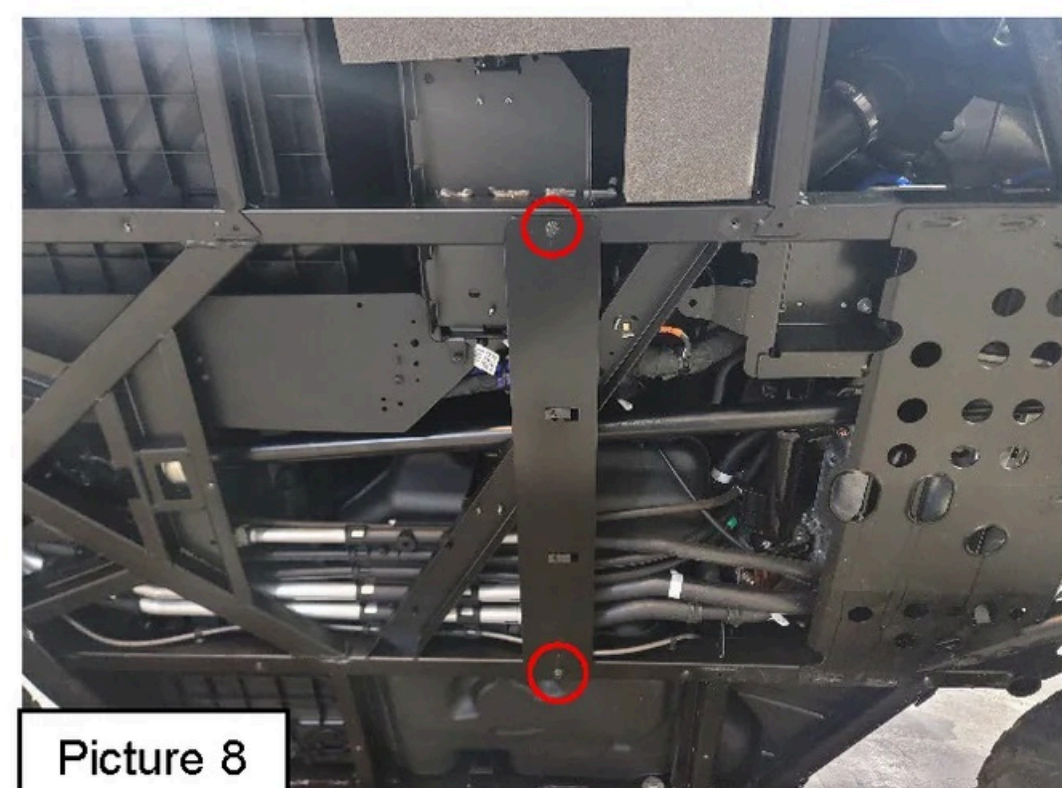
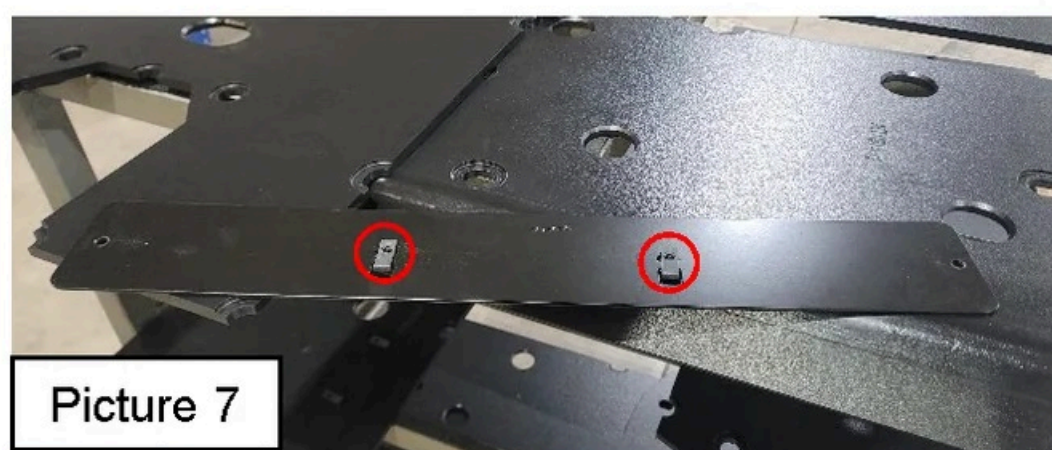
Picture 2



- D. Reinstall the modified OEM skid using the removed OEM bolts. (See Picture 4). Do this on both sides.
- E. Take the slider spacer marked XPED-SP (See Picture 5) and place it under the side skirt of the body and line up the factory holes. (See Picture 6). Repeat this for opposite side.

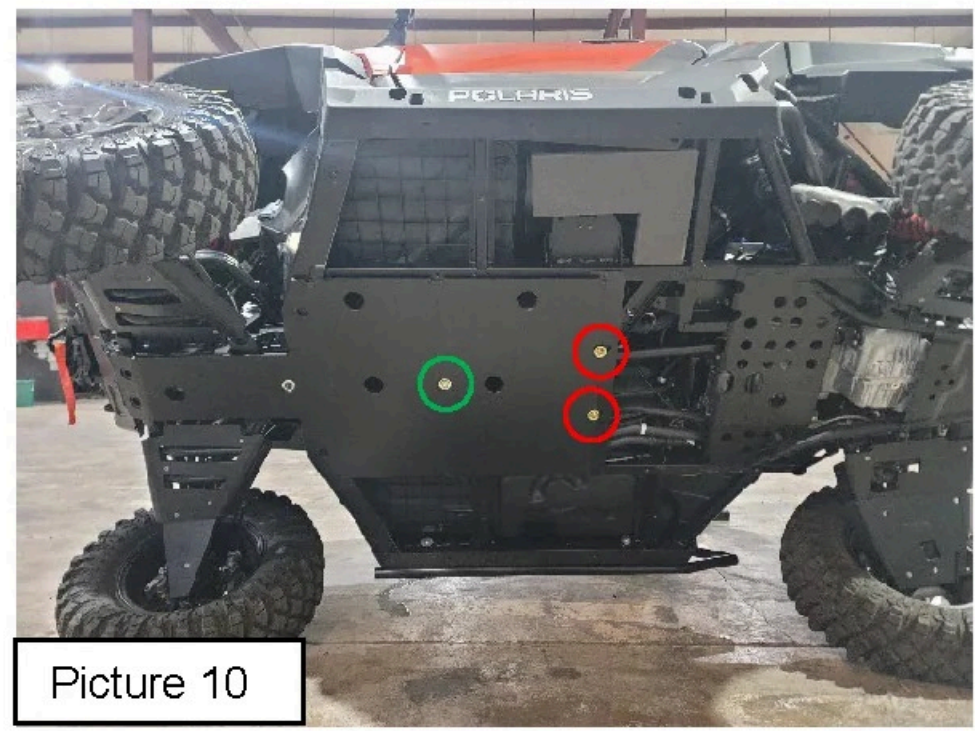


- F. Take the metal center bracket (stamped XPED5CB) and place (2) clip U-nuts (**100110**) into the 2 center holes. (See Picture 7).
- G. Install the bracket with 2 OEM bolts. (See Picture 8).





Picture 9



Picture 10

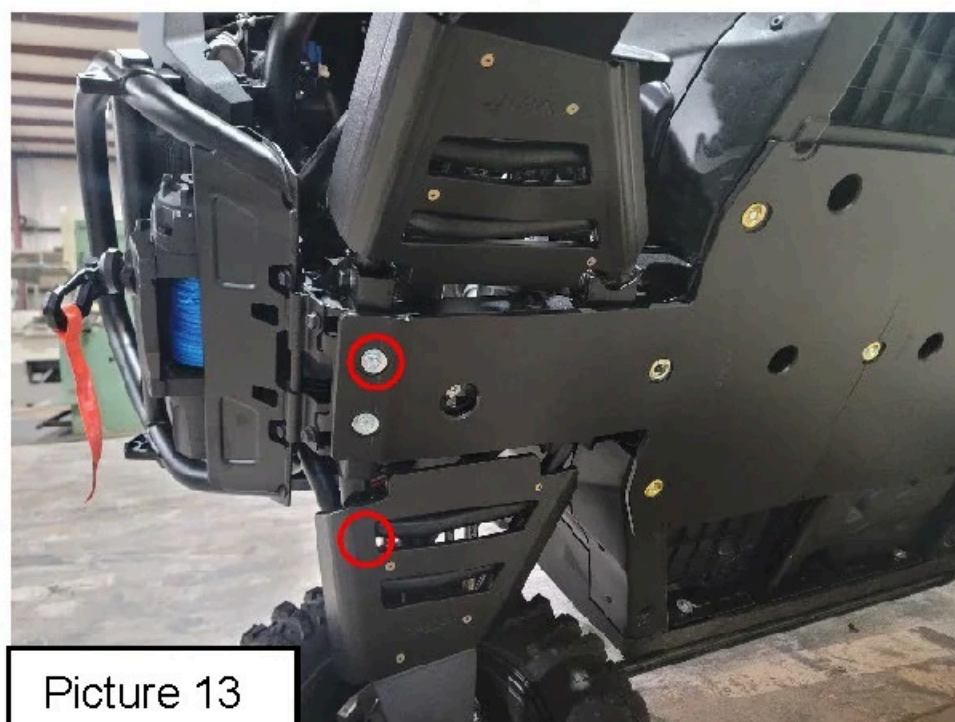
- H. Locate Panel A (XPED-A) and install it with (1) OEM bolt and bowl washer. (See Picture 9).
- I. Locate Panel B (XPED-B) and install it with (2) 1" serrated flange bolts (100048) and (2) bowl washers (100087) through the previously installed U-Nuts. **Shown in Red**. Also install (1) 25 mm bolt (100286) and (1) bowl washer (100087). **Shown in Green**. (See Picture 10).
- J. Locate Panel C (XPED-C) and align with Panel B then install (3) OEM bolts and bowl washers into the locations shown. (See Picture 11).
- K. Install (2) 25mm bolts (100286) and (2) bowl washers (100087) in the locations shown. (See Picture 12).
- L. Install (2) 3/8-16 x 1-1/4" bolts (100520) and (2) 7/16" flat washers (100521) into the front of Panel A. (See Picture 13).



Picture 11



Picture 12



Picture 13