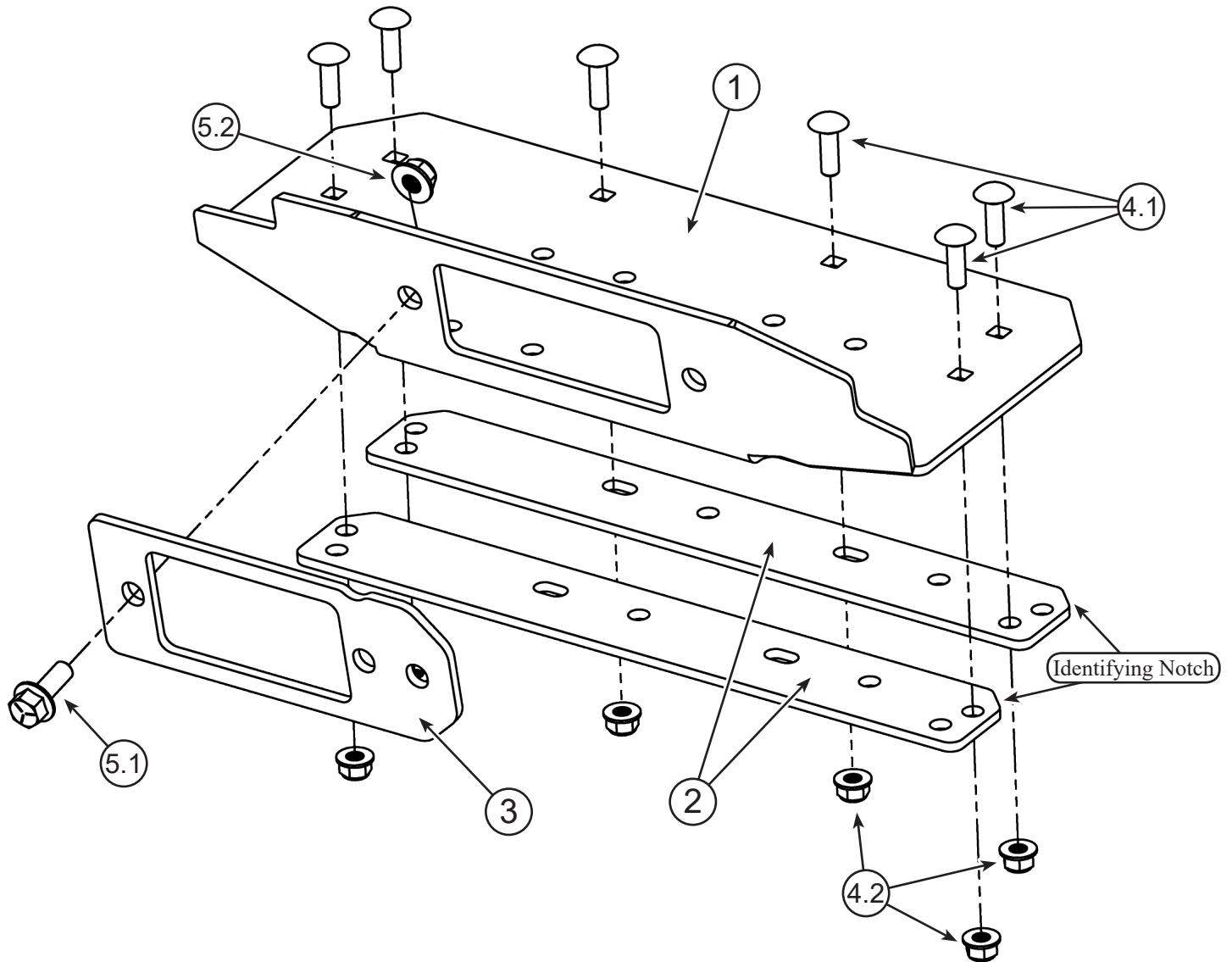


CAN-AM DEFENDER

Upper Winch Mount PART #102020



Kit Components:

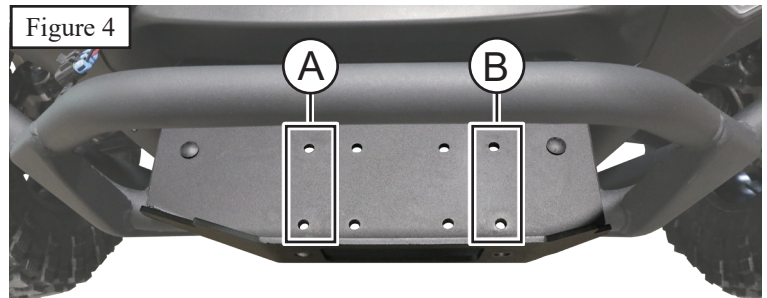
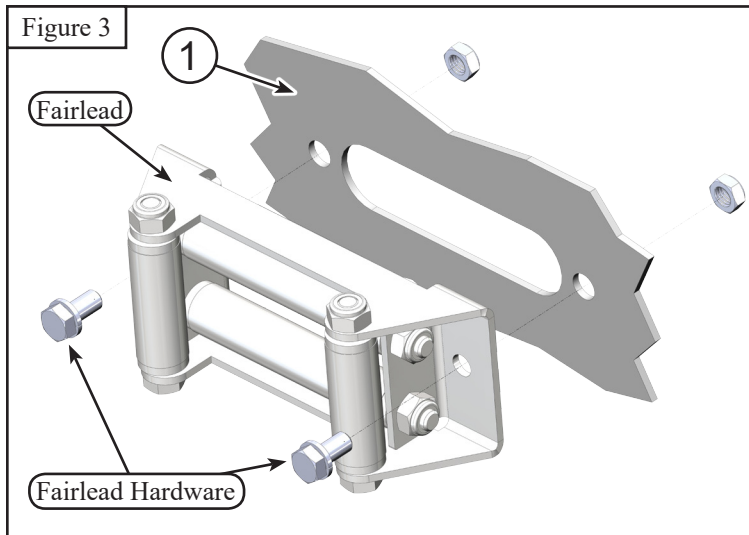
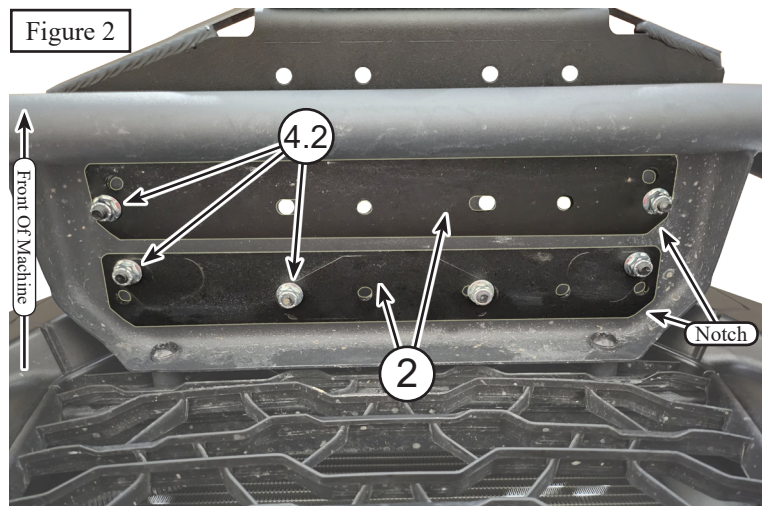
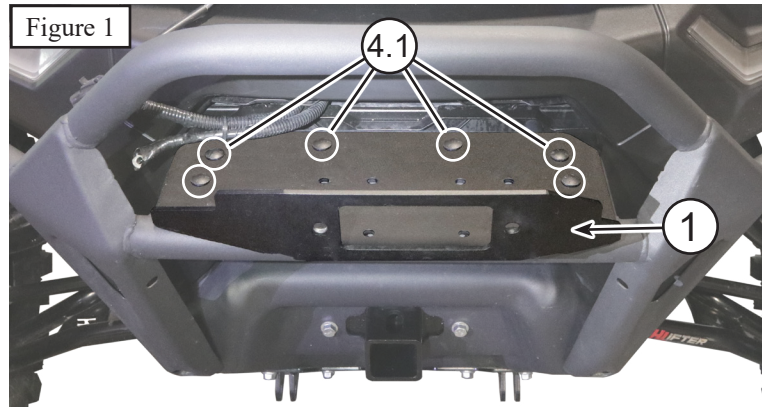
Item #	Qty.	Description	Item #	Qty.	Description
1	1	Winch Mount	4.2	6	5/16"-18 Hex Nut Flange Nylock GR5
2	2	Winch Mount Backer Plates	5	1	HK-403
3	1	Fairlead Adapter	5.1	1	3/8"-16 X 1" Hex Bolt Flange GR5 Serrated
4	1	HK-420	5.2	1	3/8"-16 Hex Nut Flange Nylock GR5
4.1	6	5/16"-18 X 1" Carriage Bolt GR5 Black	6	1	HK-031 Shown In Figure 7



INSTALLATION INSTRUCTIONS

Note: Make sure all hardware needed to complete this mount is in the package. Thoroughly read through and understand the instructions before installing.

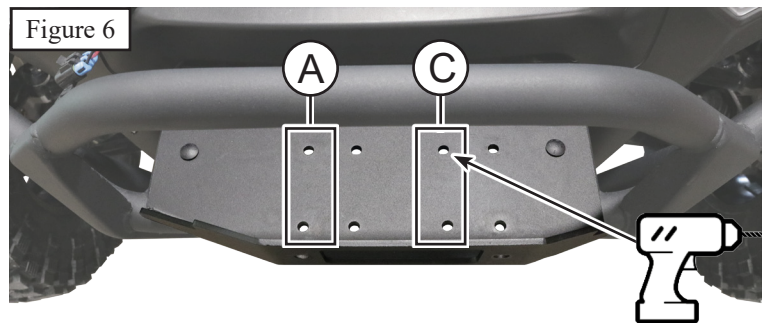
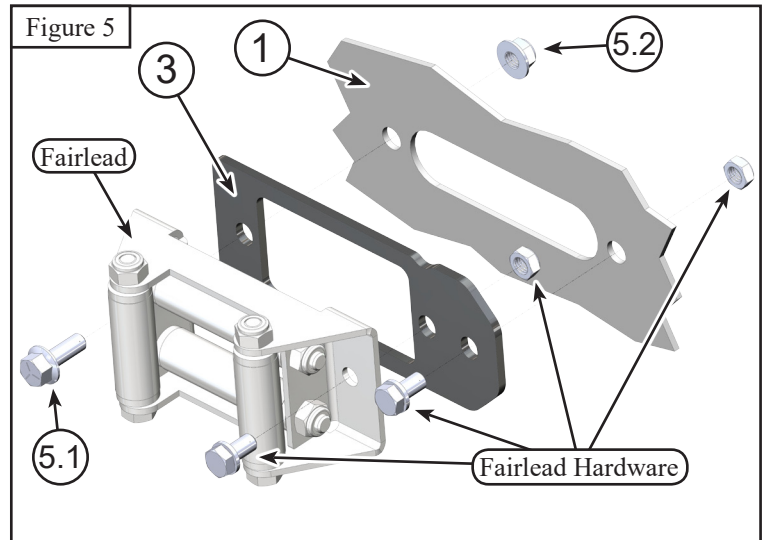
1. Place winch mount (1) onto the bumper as shown in **Figure 1** and place all 6 bolts (4.1) through the top of the winch mount.
2. Note the orientation of the backer plates (2) as shown in **Figure 2**. The notch on each backer plate should be facing the rear of the machine. Secure the 2 backer plates (2) under the bumper with nuts (4.2). Tighten hardware completely.
3. For wide winch installation (3" x 6.6" Bolt Pattern).
 - Install the fairlead on the front of the mount (1) using the hardware provided with your winch. See **Figure 3**.
 - Once the fairlead is installed, the wide winch will be mounted with holes (A and B) as shown in **Figure 4**. Use the hardware provided with your winch.



INSTALLATION INSTRUCTIONS

4. For standard winch installation (3" x 4.88" Bolt Pattern).

- If you are installing a standard winch, the rearmost hole (C) will need to be drilled using the winch mount as a template as shown in **Figure 6**.
- Once the hole is drilled, install the standard fairlead and fairlead adapter (3) to the winch mount (1) using the provided bolt (5.1) and nut (5.2) as shown in **Figure 5**.
- Use one of your fairlead bolts supplied with your winch to secure the driver's side of the fairlead to the adapter (3), and the final bolt to secure the adapter (3) to the winch mount (1) as shown in **Figure 5**.
- Once the fairlead is installed, the standard winch will be mounted with holes (A and C) as shown in **Figure 6**. Use the hardware provided with your winch.



Wiring Instructions

1. If you are relocating the OEM winch or simply using the original contactor, the winch cables can be pulled back and rerouted so that they will be able to reach the new mounting location.
2. If you are installing a new contactor, it can be mounted in the location shown in **Figure 8**.
3. Wires will be used in place of the flat steel jumpers that come standard on the OEM Contactor.

