



TRAILARMOR.COM
 839 HWY 2 CORINTH, MS 38834
 (662) 233-5700

Installation Instructions

Trail Armor Polaris Ranger Crew 1000 Half Doors TA001BLK-PRC1000

Warnings and Product Liability Disclaimer

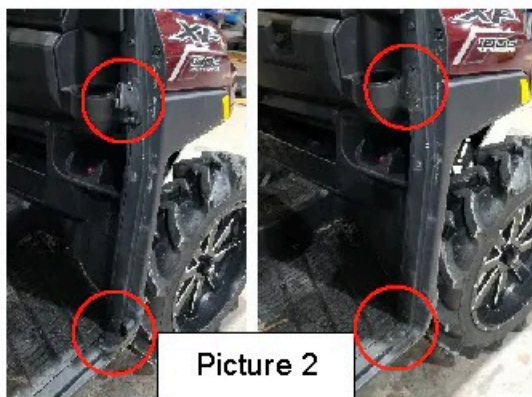
This product is intended to be used as a cosmetic accessory under normal equipment operation and should not be depended upon or used as a safety device. Manufacturer assumes no liability for personal injury or equipment damage as the result of use or installation of this accessory. User assumes all risk. User should carefully read all instructions prior to installation. All Trail Armor products are designed, engineered, and fit to new vehicles and their specifications. Damage, modifications, and extreme wear may cause and require modifications to the product and/or your vehicle to insure proper fitment.

Front Doors

- A) Remove the Factory Nets from both sides. See Picture 1.
- B) Remove the factory net brackets shown in Picture 2. Retain the OEM bolts in the upper bracket you will reuse these later. Reinstall the lower bolts. Repeat for opposite side.
- C) Remove the metal bar shown in Picture 3. Retain the upper OEM bolts (Picture 3B). These bolts will be reused later. Repeat for opposite side. Also remove the plastic cover shown in picture 3C. This cover is only located on the passenger side. The plastic cover will be reinstalled at the end of the door installation.



Picture 1



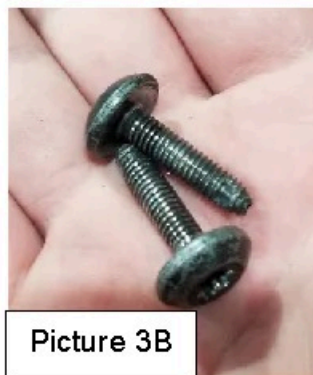
Picture 2



Picture 3



Picture 3A



Picture 3B



Picture 3C



Installation Instructions

- D) Locate the Lower Door Hanger Mounting Bracket (P) for the passenger side (Picture 4) and install it. You will need to completely remove the outside OEM bolt and just loosen the inside OEM bolt enough to slide the lower door hanger mounting bracket in. See Picture 4A. Once the lower door hanger mounting bracket is in place reinsert the removed OEM bolt in the outside hole and tighten both OEM bolts. See Picture 4B. Locate (2) 5/16-18 U-nuts and install them on the lower door hanger mounting bracket. See Picture 4C.



- E) Next you will need a 12-inch ruler or tape measure. Hold the ruler or tape measure at the seam of the factory plastic shown in Picture 5. Measure up 1-inch and make a mark then measure up 1 more inch and make another mark. You will need to make a 1-inch notch in the plastic for clearance for the Door Hanger Bracket. See picture 5A.



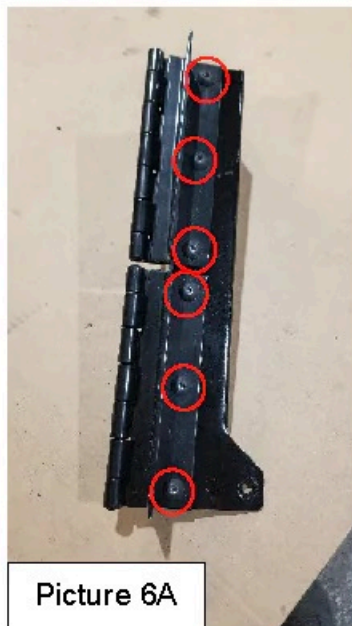


Installation Instructions

- F) Locate the Door Hanger Bracket (P) for the passenger side. See Picture 6. Locate and install (2) hinges using (6) 1/4-20x5/8 Torx screws and (6) 1/4-20 Nylock nuts. See Picture 6A. Next install the passenger side filler panel (Picture 6B) to the (P) passenger side door hanger bracket using (2) 1/4-20x1 Torx screws and (2) 1/4-20 Nylock nuts. See Picture 6C.



Picture 6



Picture 6A



Picture 6B

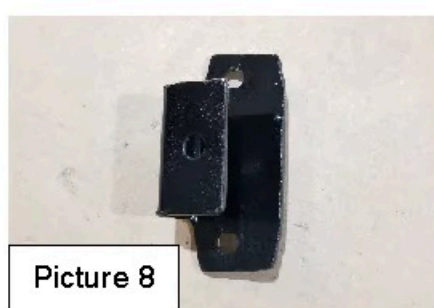


Picture 6C

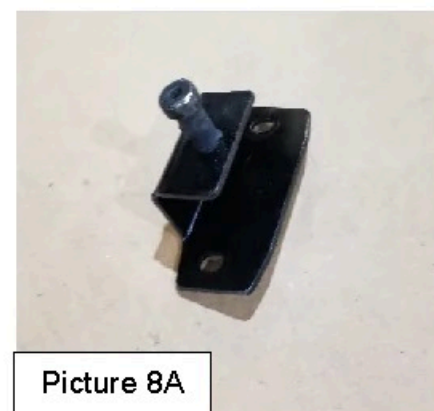
- G) Once the Door Hanger Bracket is fully assembled install using the removed upper bolts from Picture 3B and (2) 5/16-18x1 Hex head bolts. See Picture 7.



Picture 7



Picture 8



Picture 8A

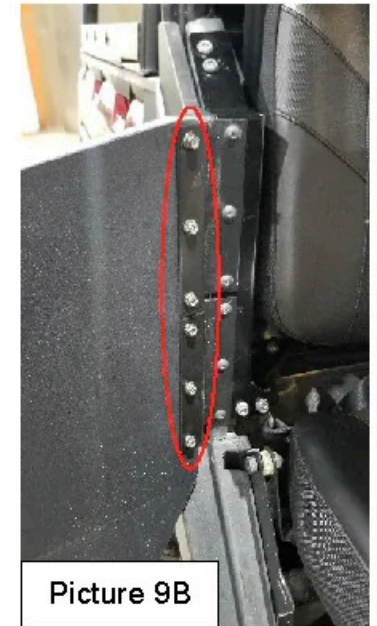


Picture 8B



Installation Instructions

- H) Locate the Door Striker Bracket. See Picture 8. Locate (1) 3/8x3/4x5/16 Shoulder bolt and (1) 5/16-18 Nylock nut and (1) 5/16 washer. Assemble per Picture 8A. Then install assembled door striker using the removed OEM bolts from Step B. See Picture 8B.
- I) Locate the Passenger Side Door Panel. Install passenger side door panel using (6) 1/4-20x1 Torx screws and (6) 1/4-20 Nylock nuts. See Picture 9, 9A, and 9B.



- J) Locate the Passenger Side Door Handle Cover, Door Handle Latch and Door handle mounting Bracket. See Picture 10. Assemble the door handle latch and the door handle bracket using (2) 5/16-18x1 FHSCS and (2) 5/16-18 Thin Nylock nuts. Then snap the door handle cover on. See Picture 10A for door handle assembly. Attach the door handle assembly to the door panel using (2) 1/4-20x1 Torx screws and (2) 1/4-20 Nylock nuts. Loosely tighten. See Picture 10B.



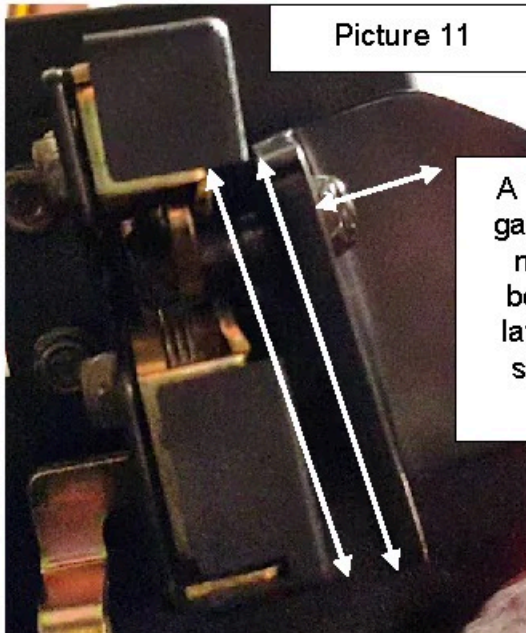
- K) Gently close the door and align the door handle latch with the striker plate. A 1/4" to 5/16" gap should be maintained between the door handle latch and the striker plate. See Picture 11 for reference. Once the door handle latch is in place tighten the hardware securely.



TRAILARMOR.COM
839 HWY 2 CORINTH, MS 38834
(662) 233-5700

Installation Instructions

- L) Open and close door a few times and check alignment. If needed you can loosen the screws in the hinges and pick up or push down on the door to get the proper alignment. Once satisfied with alignment make sure all hardware is securely tightened.
- M) Next locate your Rubber bumper and screw. The rubber bumper will need to contact the striker plate as shown in Picture 12. Picture 12A shows the rubber bumper installed on the door.



Picture 11

A 1/4" – 5/16" gap should be maintained between the latch and the strike plate.



Picture 12



Picture 12A

- N) Reinstall the previously removed Plastic cover from Step C Picture 3C. Picture 13 shows the Front door Install. Repeat steps D thru M for the Driver Side door install.



Picture 13



Rear Doors

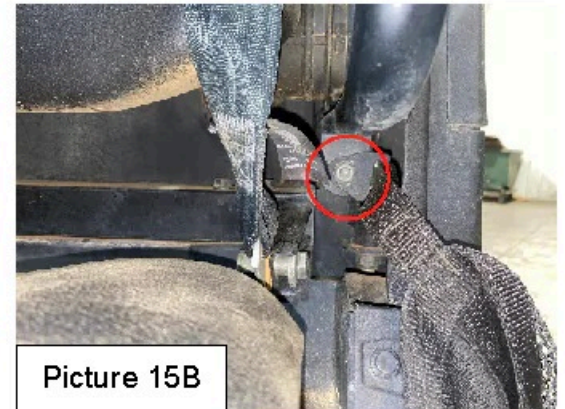
- A. Remove the Factory Nets from both sides. See Picture 14
- B. Remove the factory net brackets shown in (Pictures 15A - 15D). Retain the OEM bolts in the upper bracket you will reuse these later. Reinstall the lower bolts. Repeat for opposite side.
- C. Remove the metal bar shown in Picture 3. Retain the upper OEM bolts (Picture 15B & 15C). These bolts will be reused later. Repeat for opposite side.



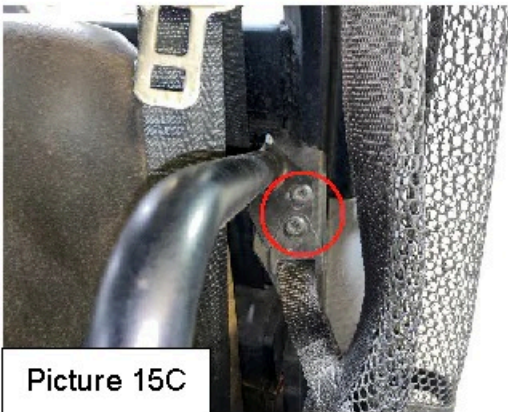
Picture 14



Picture 15A



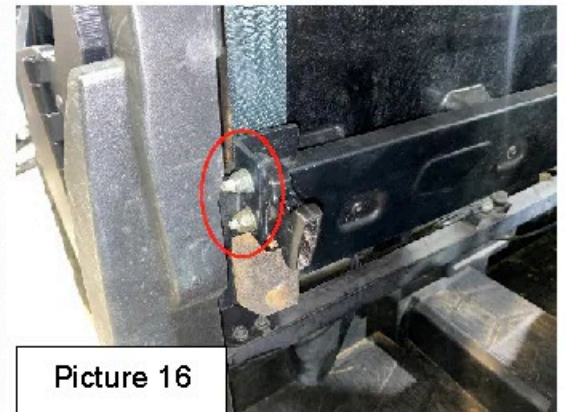
Picture 15B



Picture 15C

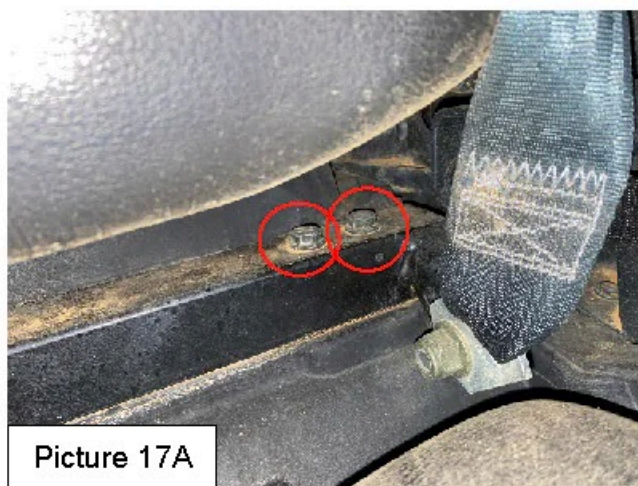


Picture 15D

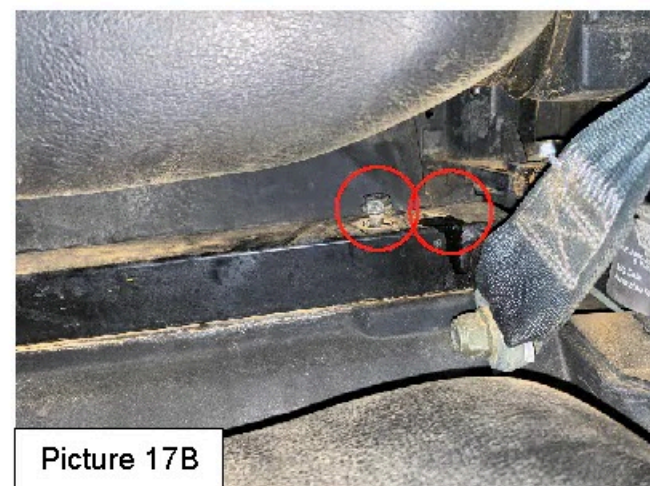


Picture 16

- D. Remove the 2 OEM bolts holding the net clip (Picture 16) (These bolts have **lock tight** on them so be careful not to strip these).
- E. Behind the seat there are 2 OEM bolts (Picture 17A). Remove the bolt on the right and loosen the bolt on the left on the driver's side (Picture 17B).



Picture 17A

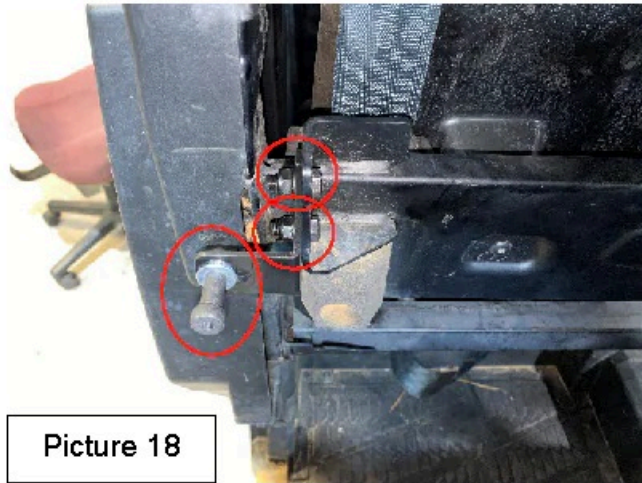


Picture 17B



Installation Instructions

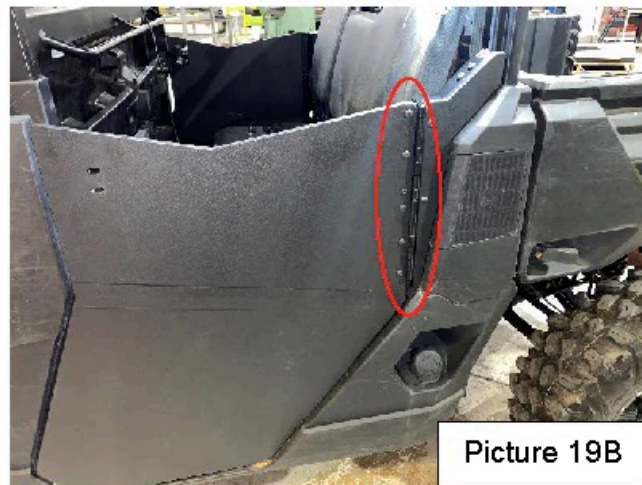
- F. Repeat steps D through E from the front doors for the rear doors.
- G. Place the rear striker bracket into location with (2) 5/16-18x7/8 Bolts and (2) 5/16 Nylock Nuts. Then place (1) 3/8x3/4x5/16 Shoulder bolt, (1) 5/16-18 Nylock nut, and (1) 5/16 washer. (Picture 18).
- H. Repeat steps F through K from the front doors for the rear doors. (Pictures 19A,B,C).



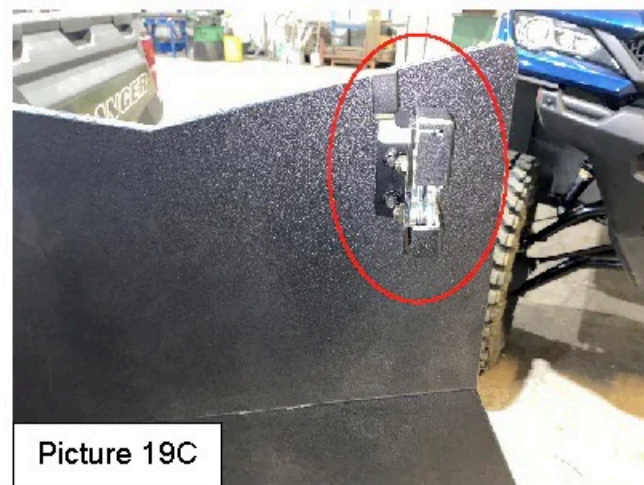
Picture 18



Picture 19A



Picture 19B



Picture 19C

- I. See Picture 20 for final install.



Picture 20