



780 Professional Drive N. Shreveport, LA 71105 Phone (318)-524-2270 Fax (318)-524-2297

[www.highlifter.com](http://www.highlifter.com)

## Honda 1000 Pioneer Lift Kit

### *Read before Installation*

This product is designed for use on ATVs and/or RUVs to increase ground clearance and fender clearance. Purchasers should be aware that use of this product may increase the frequency of required maintenance, part wear, and will raise the center of gravity on your ATV and/or RUV, increasing risk of roll-over, injury and death on all types of terrain. It is your responsibility to always inform other operators and passengers of this vehicle about the added risks.

High Lifter Products, products are designed to best fit users ATV/RUV under stock conditions. Adding, modifying, or fabricating any OEM or aftermarket parts will void warranty. High Lifter Products, products could interfere with other aftermarket accessories. If the user has aftermarket products on machine, contact High Lifter Products to verify that they will work together. Adding aftermarket suspension components and/or more aggressive tires can cause breakage of other OEM driveline components such as differentials, axles or drive shafts.

We recommend that wider tires and/or wheel spacers be used to achieve a wider stance and to improve stability of the ATV and/or RUV. Riders should be advised that the handling characteristics of a taller ATV and/or RUV are different and require extra care when riding, particularly on side hills or off-camber situations. If you further raise the center of gravity by adding taller tires, heavy loads to racks or seats, or by any other means, the ATV and/or RUV must be operated with even more care, at slower speeds and on relatively flat ground. All turns should be done at a slow speed, even on level ground.

Operation of an ATV and/or RUV with or without modified suspension components, while or shortly after consuming alcohol or drugs, subjects the rider to the risk of serious bodily harm or possible death. This risk is compounded if the rider does not wear an approved helmet and other safety gear. High Lifter urges that all approved safety gear be worn when riding an ATV and/or RUV as a driver or passenger.

By purchasing and installing High Lifter Products, products, user agrees that should damages occur, High Lifter Products will not be held responsible for loss of time, use, labor fees, replacement parts, or freight charges. High Lifter Products will not be held responsible for any direct, indirect, incidental, special, or consequential damages that result from any product purchased from High Lifter Products. The total liability of seller to user for all damages, losses, and causes of action, shall not exceed the total purchase price paid for the product that gives rise to the claim.

### Dealers and other Installers

You are responsible for informing your customer and end user of the information contained above and the increased potential hazards of operating an ATV and/or RUV equipped with modified suspension components. If you install any suspension modifying components, it is your responsibility to also install the warning label prominently in view of the driver and in prominent view of the driver and passenger on RUVs and multi-passenger ATVs. They should also be instructed to notify anyone operating the vehicle, as well as any passengers, that said vehicle is modified.

As discussed above, it is critically important that they be instructed in the need for slower speed operation, regardless of terrain, after this lift kit is installed.

## Parts Diagram

### Front Lift Bracket (2ea) 51A



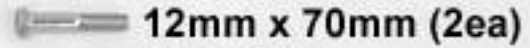
### Rear Lift Bracket (4ea) 51B



12mm x 85mm (8ea)

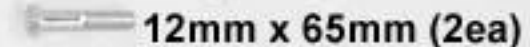


MCS1285



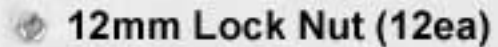
12mm x 70mm (2ea)

MCS1270



12mm x 65mm (2ea)

MCS1265



12mm Lock Nut (12ea)

MNL12-1.75

### Spacers



51N  
(2ea)

51O  
(2ea)

4Y  
(4ea)

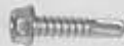
JJ  
(4ea)

AA  
(6ea)

### Logo Plate (1ea)

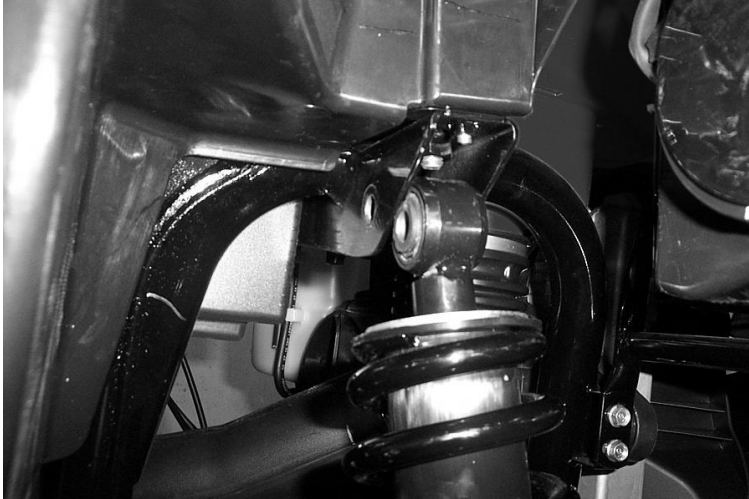


### Self Tapping Screws (2ea)



## Front Lift Installation

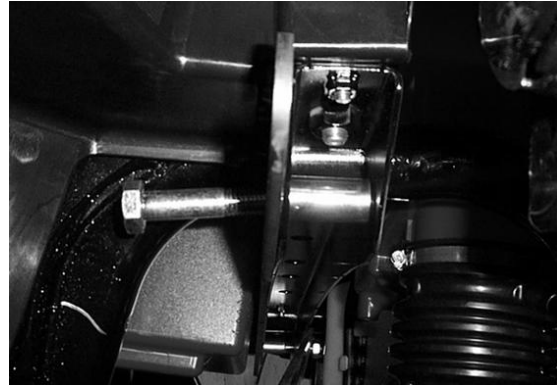
1. Place jack under center of UTV front end and lift until front wheels clear the ground. Be careful to support UTV properly so that it is securely supported but so that A-arms and shocks can droop to full extension.
2. Remove front wheels.
3. Next disconnect the top of the shock from the shock mounts.



4. Insert the front long lift bracket to the rear of the shock mount to the rear of the UTV.



5. Insert a 12mm x 65mm bolt through the bracket and shock mount. Insert between the two shock mount tabs a 4Y spacer and finish inserting the bolt.

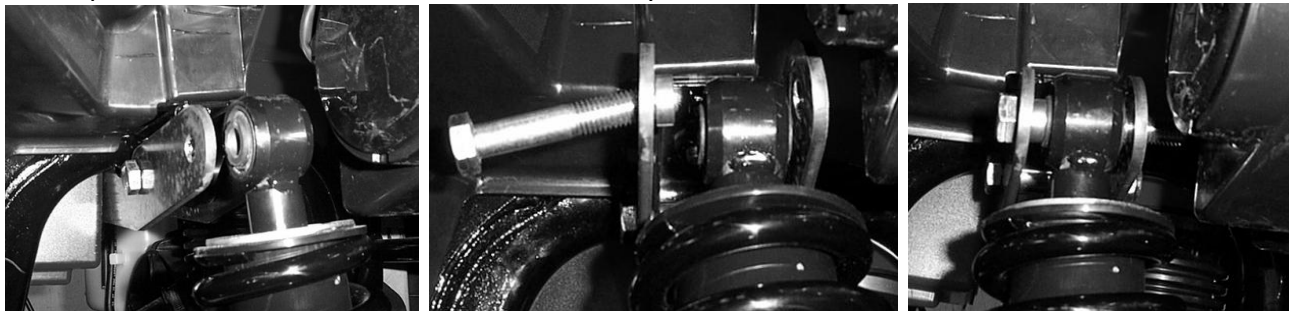


6. Connect the second front lift bracket to the front of the shock mount tabs. Attach it loosely to the bolt with a 12mm lock nut.

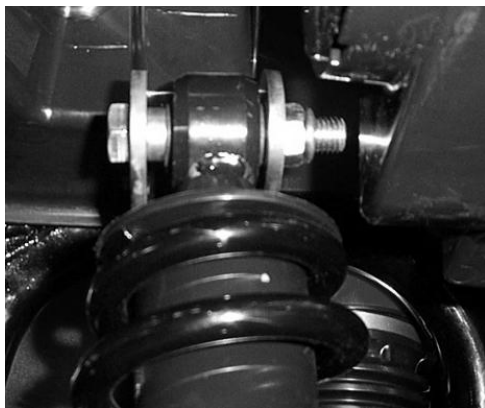
NOTE: For ease of installation do the opposite side now using the same steps.



7. Attach the top of the shock to the brackets using a 12mm x 70mm bolt and one AA spacer. Place the small spacer so that it is to the side of the shock eye that faces the rear of the UTV.



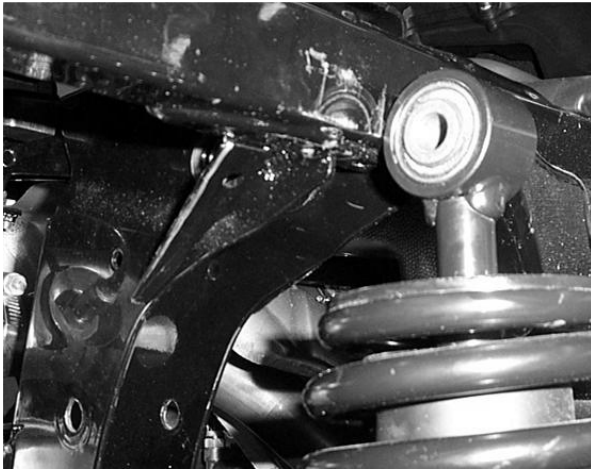
8. Secure it with a 12m lock nut.



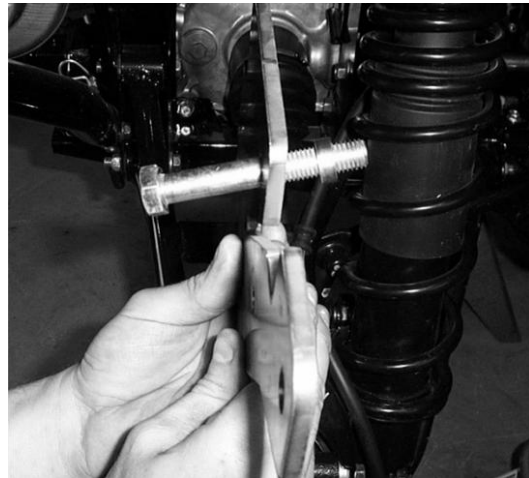
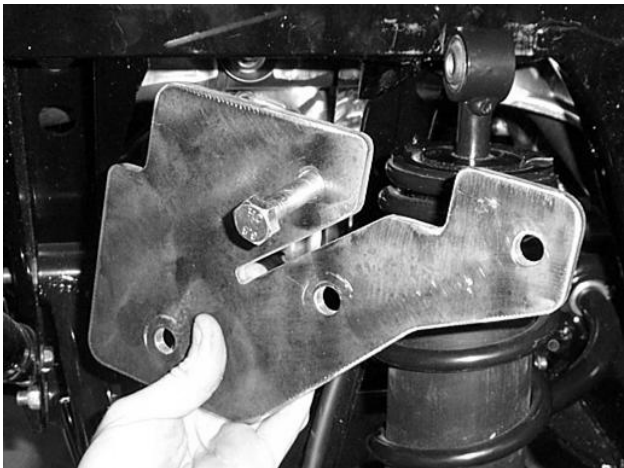
9. Repeat the steps for the opposite side.
10. Make sure all nuts and bolts are tightened.
11. Install the wheels, torque wheel lug nuts to manufacturer's specifications, lower and remove jack.  
**Always check for clearance problems or misalignment!**

## Rear Lift Installation

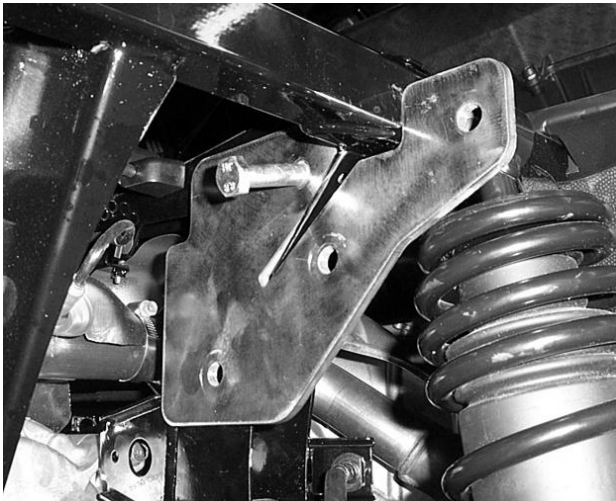
1. Place jack under center of UTV rear end and lift until rear wheels clear the ground. Be careful to support UTV properly so that it is securely supported but so that A-arms and shocks can droop to full extension. **Lift the dump bed for this installation!**
2. Now disconnect the top of the shock from the shock mount tabs on the frame.



3. Insert into one of the rear lift bracket a 12mm x 85mm bolt. Place on the bolt one AA spacer. Refer to the photo for bolt location.



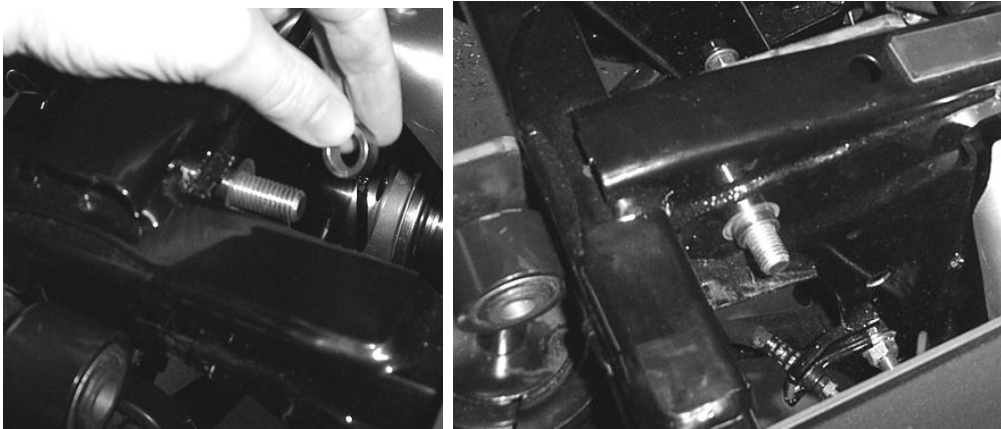
4. Connect the bracket to the frame, to the rear of the UTV on the outside of the shock mount tabs.  
NOTE: The bracket will "hook" around the frame tab near the shock mounting point.



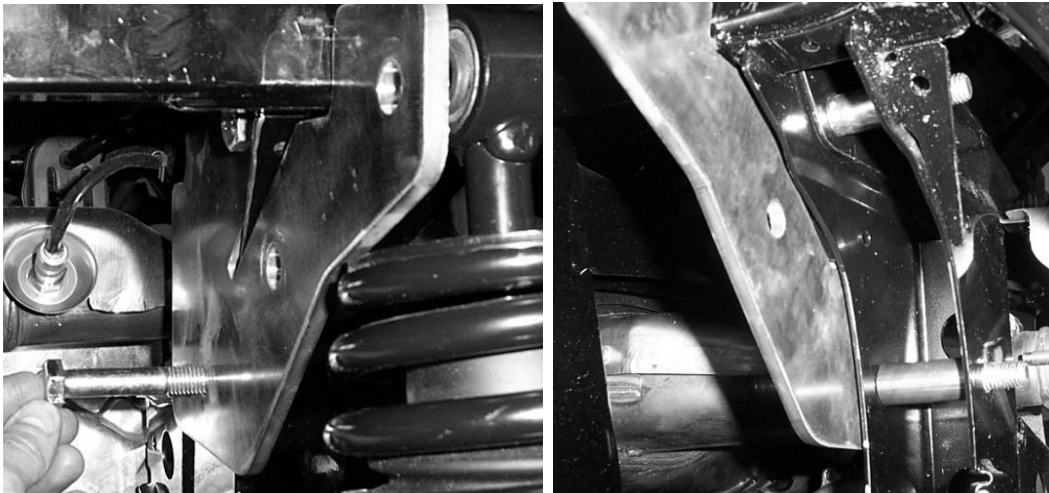
5. Insert a 4Y spacer between the shock mount tabs and push the 12mm x 85mm bolt through the spacer securing it in place.



6. Place one AA spacer on the end of the bolt on the outside of the shock mount tab.

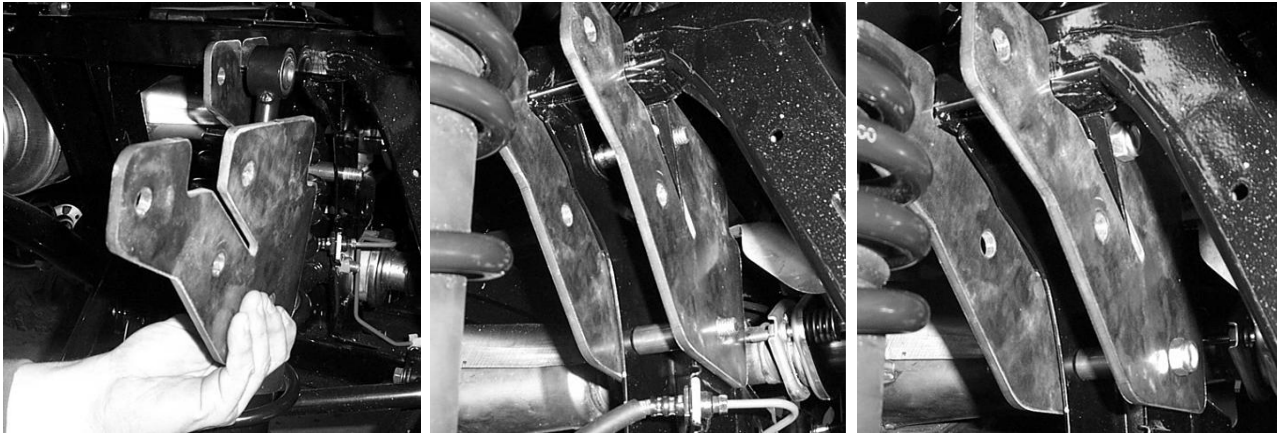


7. Insert a 12mm x 85mm bolt into the lift bracket through the hole illustrated in the photo. Place a 510 spacer between the frame gussets and push the bolt all the way through.

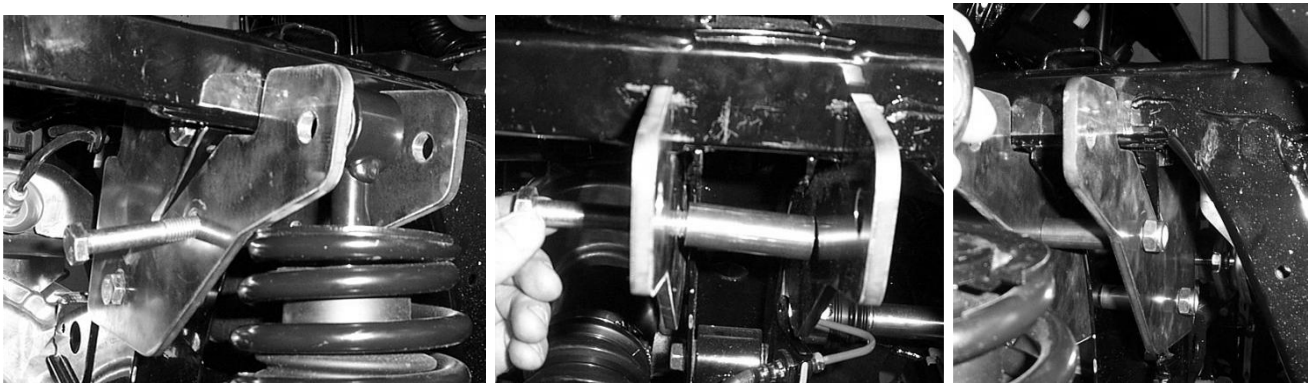




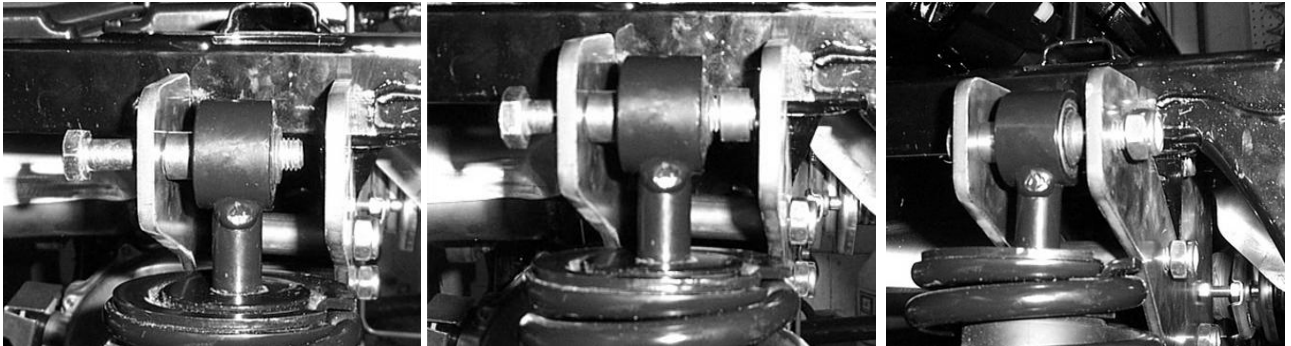
8. Attach the second lift bracket to the UTV. It goes to the outside of the shock mount tab to the front of the UTV. Loosely secure it to the bolts with 12mm lock nuts.



9. Insert the 51N spacer between the two lift brackets and secure it loosely with a 12mm x 85mm bolt and 12mm lock nut.



10. Attach the top of the shock to the lift brackets using a 12mm x 85mm bolt, two JJ spacers, and 12mm lock nut. Place the two spacers on either side of the shock eyelet and secure it all using the 12mm x 85mm bolt and 12mm lock nut.



11. Tighten all nuts and bolts.
12. Repeat steps for the opposite side.
13. Install the wheels, torque wheel lug nuts to manufacturer's specifications, lower and remove jack.
14. **Always check for clearance problems or misalignment.**

## Logo Plate Installation

1. On the tailgate of the bed you will need to center the logo plate.



2. Using the self tapping screws provided in the kit, connect the logo plate to the tailgate.



**Thank You**  
**For Choosing**

***High Lifter***  
**PRODUCTS**





## High Lifter Lifetime Warranty

From the beginning, High Lifter has engineered and manufactured some of the toughest, most durable products on the market. That's why this product comes with a Lifetime Warranty. It's our promise that High Lifter will never let you down.

- The **Lifetime Warranty** covers products sold to the original purchaser only and is not transferable. The term of the warranty is for the lifetime of the vehicle in question.
- Normal wear and tear items and finishes, such as, but not limited to: Heim joints, tie rod ends, ball joints, bearings, seals, bushings, bushing sleeves, zinc plating , powder coating, or chipping and discoloration of any finish is not covered.
- High Lifter will ship the replacement product after the returned product has been inspected by High Lifter staff.
- The warranty shall not include claims for damages, installation time or labor charges, economic losses, inconvenience, transportation, towing, down time, direct or indirect or consequential damages or delay resulting from any defect.
- The warranty does not apply to products that have been improperly applied or improperly installed.

## Making a warranty claim

1. All claims must be accompanied by the part and the original sales receipt or other acceptable proof of purchase from the original owner.
2. All warranties must be accompanied with a Return Merchandise Authorization (RMA) number. (Contact High Lifter at 318-524-2270 or 800-699-0947 for an RMA number)
3. When shipping the damaged product:
  - a. Write the RMA number on the outside of the box.
  - b. Also include the RMA number, proof of purchase and any notes inside the box.
  - c. Please keep your tracking number and shipment information.
4. The customer is responsible for shipping the product to High Lifter--return shipping within the lower 48 states will be paid by High Lifter products. With all warranty claims, only standard shipping services apply.
5. High Lifter will process your order within 24 business hours of receiving the returned item.
6. **Ship to:** High Lifter Products, 780 Professional Drive North, Shreveport, Louisiana 71105