

CAL-R-GEN1 | CAL-R-GEN1-HD

General 1000 Rear Control Arm Link Kit



Parts Available For These Popular Brands and Others

POLARIS

can-am



Kawasaki



HIGHLIFTER



sales@highlifter.com



800-699-0947 | 8:00am - 6:00pm CST



780 Professional Drive North, Shreveport, LA 71105



www.highlifter.com

PRODUCT DISCLAIMER

The installation of products sold or manufactured by High Lifter Products, Inc. including, but not limited to suspension components such as lift kits, gear reduction lifts, frame stiffener kits, snorkels, and tires that exceed the original specifications for the vehicle, may change the vehicle's center of gravity and handling characteristics both on- and off-road. You are aware that the installation of tires that are larger than original vehicle specifications may reduce the effectiveness of the braking system. Use of these products may place added stress to the original factory vehicle components which could cause them to weaken or possibly fail.

Products sold or manufactured by High Lifter Products, Inc. are intended for off-road use only. Operation of a vehicle modified with these products on a road could result in serious bodily injury or death, and such operation may violate the laws of your state or municipality. You agree to operate your vehicle exclusively in the manner intended by the vehicle manufacturer. You agree that failure to safely and reasonably operate your vehicle could result in serious bodily injury or death, and that, as a result of installation of this product(s) to your vehicle, extreme care must be taken to prevent vehicle rollover or loss of control, which may be more likely to occur as a result of said modifications. You will avoid unsafe maneuvers, including sudden sharp turns or other abrupt maneuvers, which could make a vehicular accident more likely. You understand that High Lifter Products, Inc. is not responsible or liable for any damages or any injuries to yourself or your passengers that could occur upon possible accidents due to driver error, incorrect installations, bad judgment, incompatibility with other aftermarket accessories or natural disasters to the fullest extent allowable by law.

You will have all vehicle occupants fasten seatbelts, if equipped, and wear proper safety equipment, such as DOT approved helmet and eye protection prior to operating the vehicle. You understand and acknowledge that failure to wear proper safety equipment may increase the risk of serious bodily injury or death to yourself and any passengers.

Proper installation of products sold or manufactured by High Lifter Products, Inc. requires knowledge of the factory recommended procedures for removal and installation of original equipment components. Installation of these products without proper knowledge and experience may affect the performance of these components and the safety of the vehicle and cause serious bodily injury or death. It is strongly recommended that a certified mechanic familiar with the installation of similar components perform the product(s) installation.

Prior to installing any products sold or manufactured by High Lifter Products, Inc., you will perform or cause to be performed an inspection of their vehicle to confirm its condition is suitable for the installation of these products. A proper inspection of the vehicle includes confirmation that the vehicle has not been in a collision and is free of corrosion. If the vehicle is suspected to have been in a collision or misused, or is otherwise unsuitable for modification, you will not install the product(s). You will continue to inspect the vehicle prior to each use to confirm its condition is suitable for its intended use, and you acknowledge that the failure to do so may result in serious bodily injury or death, as well as damage to the vehicle itself.

You will install any warning labels provided with the product so it may be prominently seen by yourself and all passengers. You will notify all passengers of the modifications performed to your vehicle prior to operation.

Insurance companies may handle coverage of a modified vehicle differently. Please check with your insurance carrier prior to modifying the vehicle to ensure your coverage remains sufficient.

Installation of this product(s) may void your vehicle warranty. If this is a concern, please check with the manufacturer or dealer before purchase or installation of this product(s).

HIGHLIFTER

PARTS DIAGRAM

FRAME (CALBOX-R-P004-B1)



LINK BARS (CALBOX-AL-004-B2)



CLAMPS (CALBOX-CC-001-B3)(1.25) (CALBOX-CC-002-B3)(HD 1.5)



BEFORE INSTALLATION

IMPORTANT NOTICE: ONLY works with our HIGH LIFTER BIG LIFT

UTV PREP

Lift

1



REAR PASSENGER SIDE

KEEP ALL FACTORY HARDWARE.

If there is not enough clearance to work under the UTV, jack up the front so the jack doesn't interfere with the skid plate removal or link bar install.

UTV PREP

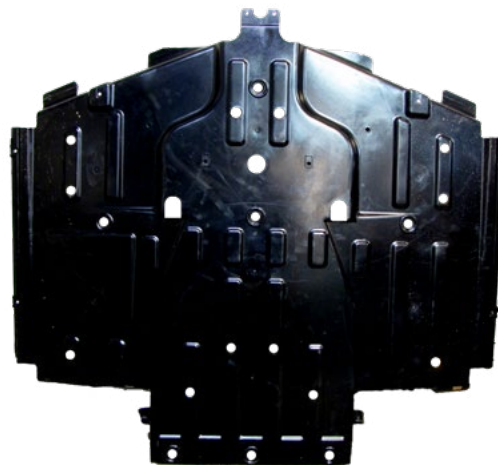
Removal

2



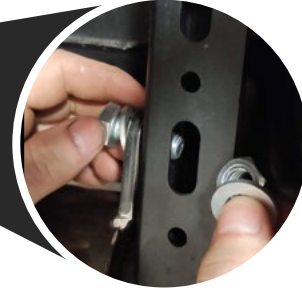
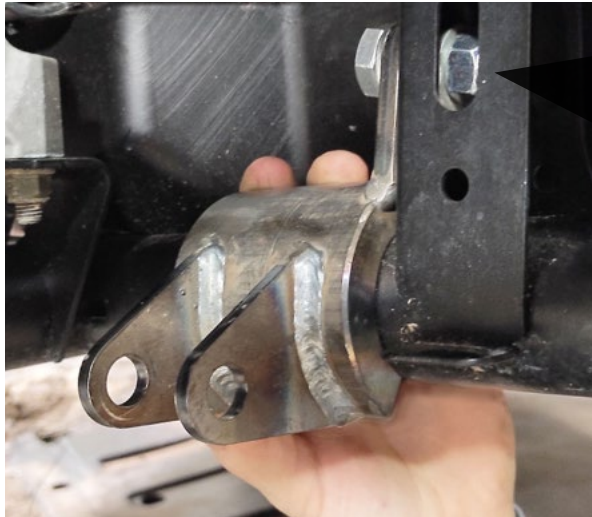
Remove the main skid plate to gain access to the rear frame tubing.

FRONT

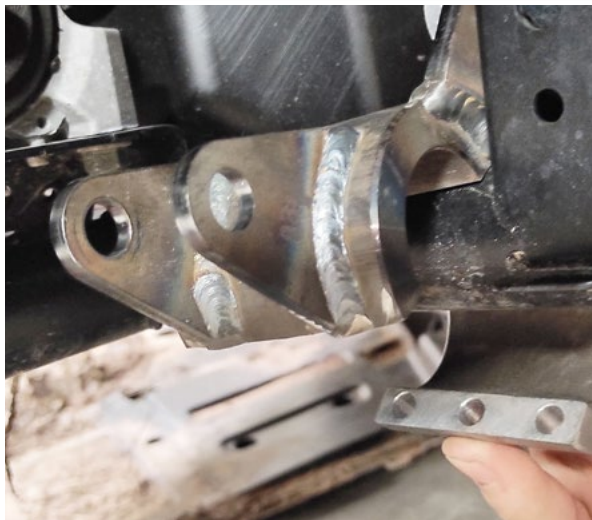


REAR

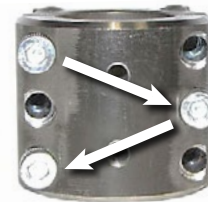
3



Install the frame clamp collar to the frame. Secure it by using the 12x30mm bolt followed by a 12mm flat washer and 12mm lock nut.



Install the backside of the clamp collar and secure it using the (6) M8-1.25x20 socket head bolts.



Tighten bolts in zig-zag pattern
Torque to **30lb-ft**

4



LEFT-HAND HEIM



93M
Link Bar



Insert (2) alignment cones 96Q into the eyelet of the heim joint.

IMPORTANT NOTICE: THERE IS A SCRIBE LINE ALL THE WAY AROUND THE LINK BAR TO INDICATE THE SIDE WITH LEFT-HAND THREADS.

If not already assembled, insert the **LEFT-HAND** heim joint 96P and **LEFT-HAND** jam nut LJN58F into the bar. Leave about ¼" of thread exposed for final adjustments.

REPEAT STEPS ON OPPOSITE SIDE

5



FRAME

Connect the heim joint end to the frame clamp tab with the 1/2" x 2-3/4" bolt, then place the 12mm flat washer over it and 1/2" lock nut. **Torque to 110lb-ft.**

6



RIGHT-HAND HEIM

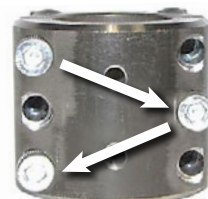
This end will connect to the control arm collars and **DOES NOT HAVE A LINE ON THE END OF THE BAR.** If not already assembled, insert the **RIGHT-HAND** heim joint 18D and **RIGHT-HAND** jam nut JN58F to the bar. Leave about 3/4" of thread exposed for final adjustments.

Insert (2) alignment cones 96Q into to the eyelet of the heim joint.

7



Loosely install the backside of the clamp collar onto the lower control arm, you will need to adjust the collars later. Connect it at the lowest point possible on the arm using the (6) 1/4-20 x 3/4" socket head bolts.



DO NOT SECURE COLLAR UNTIL CLEARANCES ARE MET.
(NEXT PAGE)

8



CONTROL ARM CLAMPS

Connect the heim joint on the collar on the control arm. Slide a 12mm flat washer onto a 1/2" x 2-3/4" bolt. Insert it through the clamp collar and heim. Secure it with a 1/2" lock nut. **Torque to 110lb-ft.**

CLEARANCE CHECK

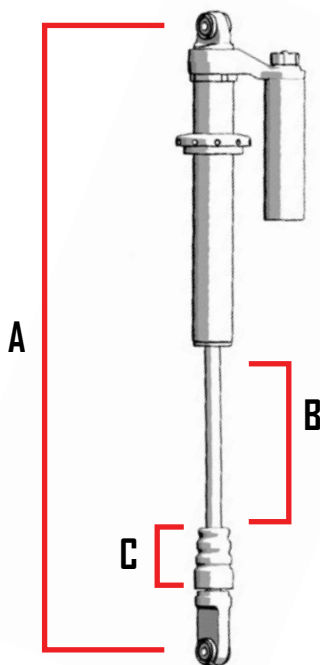
Shock

9



Remove the shock from the UTV.

IMPORTANT NOTICE: USE THE CHART TO RECORD THE FOLLOWING MEASUREMENTS.



NOTE: DO NOT remove the spring, this is to illustrate areas to measure.

Block A Measure the shock length from eye to eye.

Block B Measure the length of the exposed shock shaft (between bump stop and shock body) Ensure that the bump stop is at the bottom of the shaft.

Block C Measure the height of the bump stop, divide it by 2.

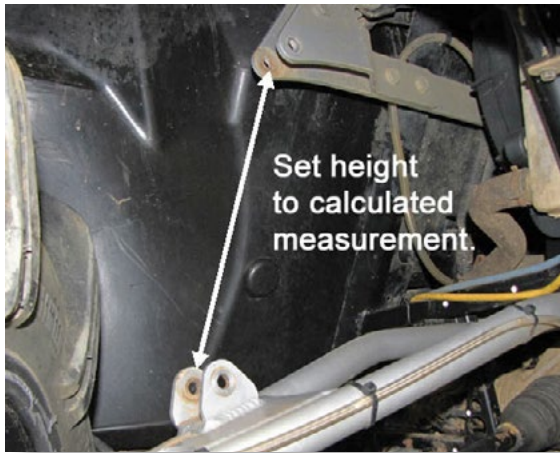
Take the A and subtract B & C. This will equal what the shock will be at full compression.

USE FORMULA PROVIDED TO DETERMINE THE FULL COMPRESSED LENGTH

$$A - B - (C \div 2) = \text{Compressed Length}$$

POSITION	PART TO MEASURE	LENGTH
A	Shock Length	
B	Shock Shaft	-
C	Bump Stop $\div 2$	-
Total Compressed Length ----->		=

REPEAT STEPS ON OPPOSITE SIDE



While the shock is off the bike, lift the control arms until the measurement from the **shock frame mount to the shock control arm mount** is the length previously calculated.

Use a jack stand, or a friend to hold the arm in place to situate the link bar close to the frame, ensuring it does not touch.

Ensure tire is **NOT** interfering with the link bar.



To achieve proper clearance from the tire and frame, adjust the link bars, slide the clamp up and down on the control arms, and rotate the collar until clearances are met.

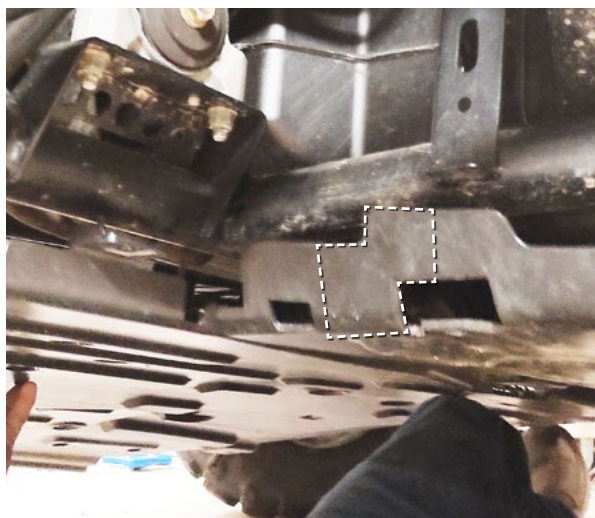


Once Proper clearance is achieved, torque the $\frac{1}{4}$ -20 x $\frac{3}{4}$ " socket head bolts to **12lb-ft**. Tighten bolts in zip-zag pattern.



Located on each clamp collar are two $\frac{1}{4}$ -20 x $\frac{3}{8}$ " set screws. Make sure that the set screws are tightened, so that the collars cannot move during use.

11



You will need to trim the skid plate where the frame clamp collar will go.



Once trimmed on both sides, re-install the skid plate to the unit.



REPEAT STEPS ON OPPOSITE SIDE OF THE VEHICLE



Once you have repeated the steps on the opposite side, place the wheels back on the vehicle and lower the jack and inspect the vehicle.

TORQUE ALL BOLTS TO FACTORY SPEC



HIGH LIFTER LIMITED LIFETIME WARRANTY

High Lifter offers a Limited Lifetime Warranty to the original purchaser that our product shall be free from defects in material and workmanship for the life of the product if utilized in accordance with the manufacturer's instructions for installation and operation of said products.

LIMITED LIFETIME WARRANTY EXTENDS TO THE FOLLOWING PRODUCT LINES:

- Lift Kits (Signature, Standard and Big Lifts)
- Control Arms
- Trailing Arms
- Radiator Relocation Kits
- Portal Gear Lifts
- Wheel Spacers
- Tow Hooks
- Control Arm Link Kits

Damages to vehicle or any other object during the installation, use, or removal of High Lifter products are not covered under this warranty. Normal wear items included with any of the products covered under this Limited Lifetime Warranty are excluded from coverage. These items include, but are not limited to heim joints, tie rods, bearings, bushings, seals, gaskets, zinc plating, painted and powder coated finishes. Other exclusions of coverage under this warranty include, but are not limited to: damage or product failure due to improper installation, lack of maintenance, product modification, abuse, collision or use on vehicles for which product was not designed, repairs performed by anyone other than approved High Lifter personnel or made using non-High Lifter components. This warranty is valid for the original purchaser only and is non-transferable. High Lifter reserves the right to inspect any product before determining if the claim is valid and covered under this warranty. Claims determined to be caused by reasons other than a manufacturer defect will be rejected and an estimate for repair or cost of a replacement product if a repair is not possible, will be provided.

This warranty is exclusive and is in lieu of any implied warranty of merchantability, fitness for a particular purpose or other warranty of quality, whether express or implied, except the warranty of title.

WARRANTY PROCESSING

If you suspect your product is defective, **DO NOT** disassemble the product to determine the cause without prior approval as it may void your warranty status. This is especially true with our Portal Gear Lift. To begin the claim process, please e-mail our warranty team at warrantycare@highlifter.com and include the following in the e-mail:

- ☐ Your full name, address and contact phone number.
- ☐ The year, make and model of your vehicle
- ☐ The part number of the product
- ☐ Photos of the product installed, and vehicle product is installed on
- ☐ Proof of Purchase (Required for all warranty claims and you must be the original purchaser)

Once a claim is created, you will receive a return authorization number (RMA). Write this number on the outside of the box containing your defective product and include it along with your name and contact information inside the box. Product must be returned in the original box or a box of equal strength and packaging. Product sent without an RMA number visible on the outside of the box or sent COD will be refused. Ship your product to the following address:

High Lifter Products, Inc.

Attn: Returns 780 Professional Dr N Shreveport, LA 71105

Once your product is received, we often have your replacement or repaired product shipped back to you within 3-business days of receiving it. Please note that High Lifter is not responsible for shipping charges on product returned for warranty or repair, including duties and fees required by those residing outside the United States.

THANK YOU FOR CHOOSING HIGHLIFTER

OBTAINING A WARRANTY CLAIM

All returns for warranty must be pre-approved by calling **1.800.699.0947**. After warranty approval has been granted and a Return Merchandise Authorization (RMA) number issued, the product must be received by **HIGH LIFTER PRODUCTS** within **15 calendar days**. The RMA number must be clearly displayed on the return box or the return will be refused. An RMA number does not imply a replacement or refund on any product, but only that we will inspect the product for warranty claims. For orders outside the United States, any fees associated with customs or duties are non-refundable. All claims must be accompanied by the sales receipt detailing date and place of purchase, a written explanation of the problem, a phone number, and e-mail address. **A copy of this receipt must be included with the product submitted for warranty repair or replacement. The purchaser is responsible for any freight charges on a warranty claim or repair service after the warranty expires, including incoming freight to High Lifter and return freight to the purchaser.**

HIGH LIFTER PRODUCTS WARRANTY CLAIM

Name: _____

Product Number: _____

Address: _____

Place of Purchase: _____

Date of Purchase: _____

Phone Number: _____

Reason for Return: _____

E-Mail Address: _____

Reminder – This claim must be accompanied by a copy of the original receipt.

