



Made for first. Built to last.

DISCLAIMER:
PRODUCTS MADE BY L AND W FAB AND MACHINE INC. ARE INTENDED TO FIT YOUR STOCK UTV UNLESS OTHERWISE SPECIFIED. INSTALLING, MODIFYING, OR REMOVING ANY COMPONENTS (FACTORY OR AFTERMARKET) NOT SUPPORTED BY L AND W AND THE INSTRUCTIONS HEREIN WILL VOID YOUR WARRANTY. FOR MORE INFORMATION ON INSTALLATION, WARRANTY, OR PRODUCT USE PLEASE CALL US AT (770) 445-9778

XP TURBO VENT COVERS

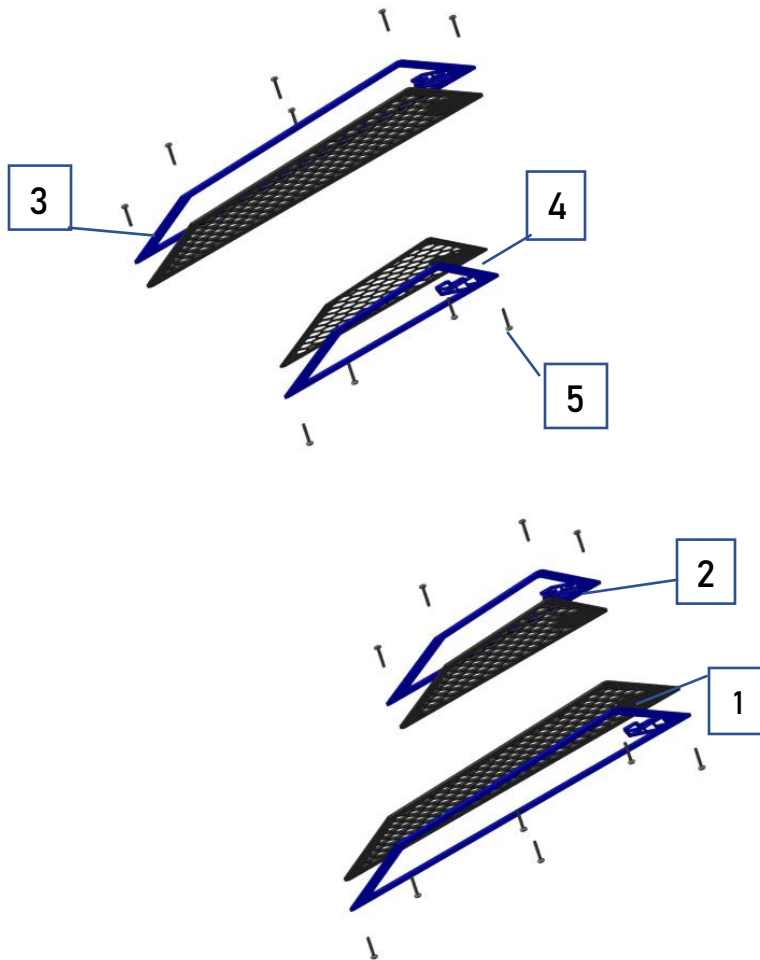
Fitment: 2017-CURRENT RZR XP TURBO



INSTALLATION MANUAL

Parts List:

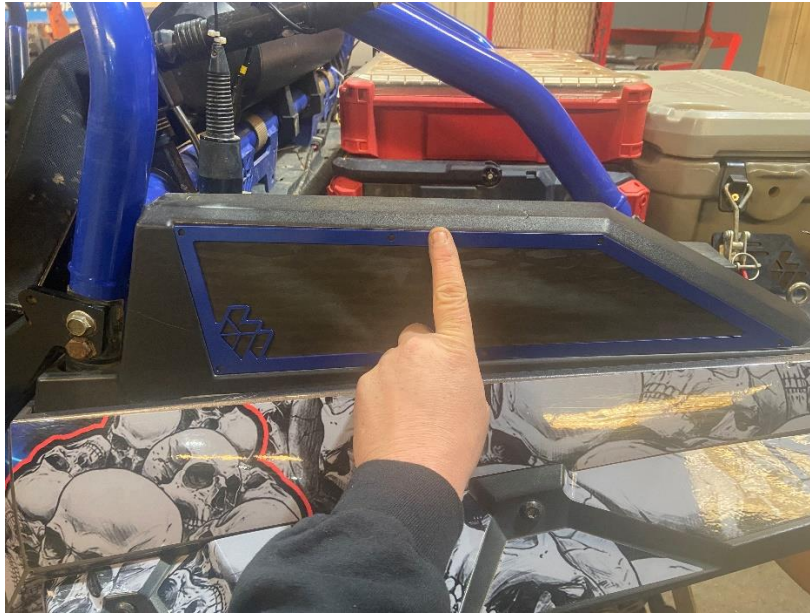
Item #	Description	Qty.
1	PASSENGER OUTER	1
2	PASSENGER INNER	1
3	DRIVER OUTER	1
4	DRIVER INNER	1
5	TORX BOLT	20



Installation:

STEP 1:

Place the cover in place on the machine and align along the edges as shown and mark the holes to be drilled.



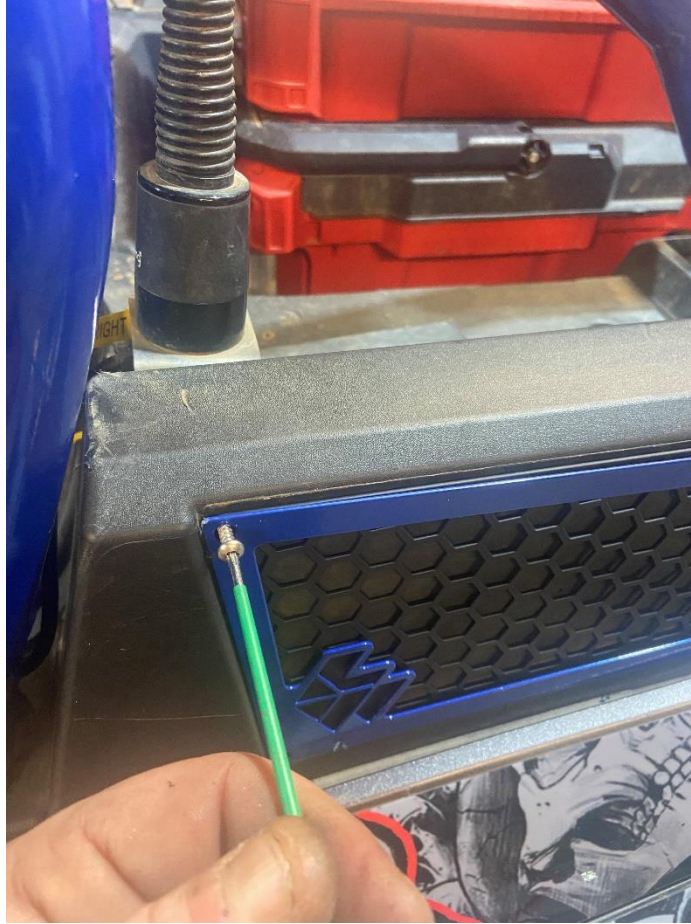
STEP 2:

Using a 1/8" drill bit, drill the holes to mount cover.



STEP 3:

After drilling all holes, insert the supplied screws to secure the vent cover. Be careful not to tighten too tight as it will strip out the plastic.



STEP 5:

Repeat the steps for the remaining covers.



THANK YOU FOR CHOOSING L&W FAB!

