

17 Turbo XP1000 18+ Polaris RZR XP1000 Heater Kit ICCH-UD-C-POLRZR18

- 1x 1 1/4" Hole Saw **235**
- 1x 55mm Hole Saw **236**
- 1x Hole Saw Arbor **233**
- 2X #16 Hose Clamps **226**
- 4x #10 Hose Clamps **228**
- 2x #6 Hose Clamps **231**



504

RZR-15f of 5/8
Heater Hose
RZR 4 -17f of 5/8
Heater Hose

- 1x Blower Switch **333**
- 1x 7/16" Washer **344**
- 6x 1/4" Washer **433**
- 2x 5/16-18x5" Bolts **314**
- 2x 5/16x18 Nuts **421**
- 1x 1/4x1" Self
Drilling Screw **412**
- 6x 1/4-20x3/4" Bolts **311**
- 1x 1/4-20x1 1/2" Bolt **313**
- 7x 1/4x20 Nuts **420**



213

1x Pre-made
Power Loom

- 3x 1/4 Fender Washers **430**
- 5x 1/4" Push-Pins **324**
- 2x 1 1/4" Gommets **221**

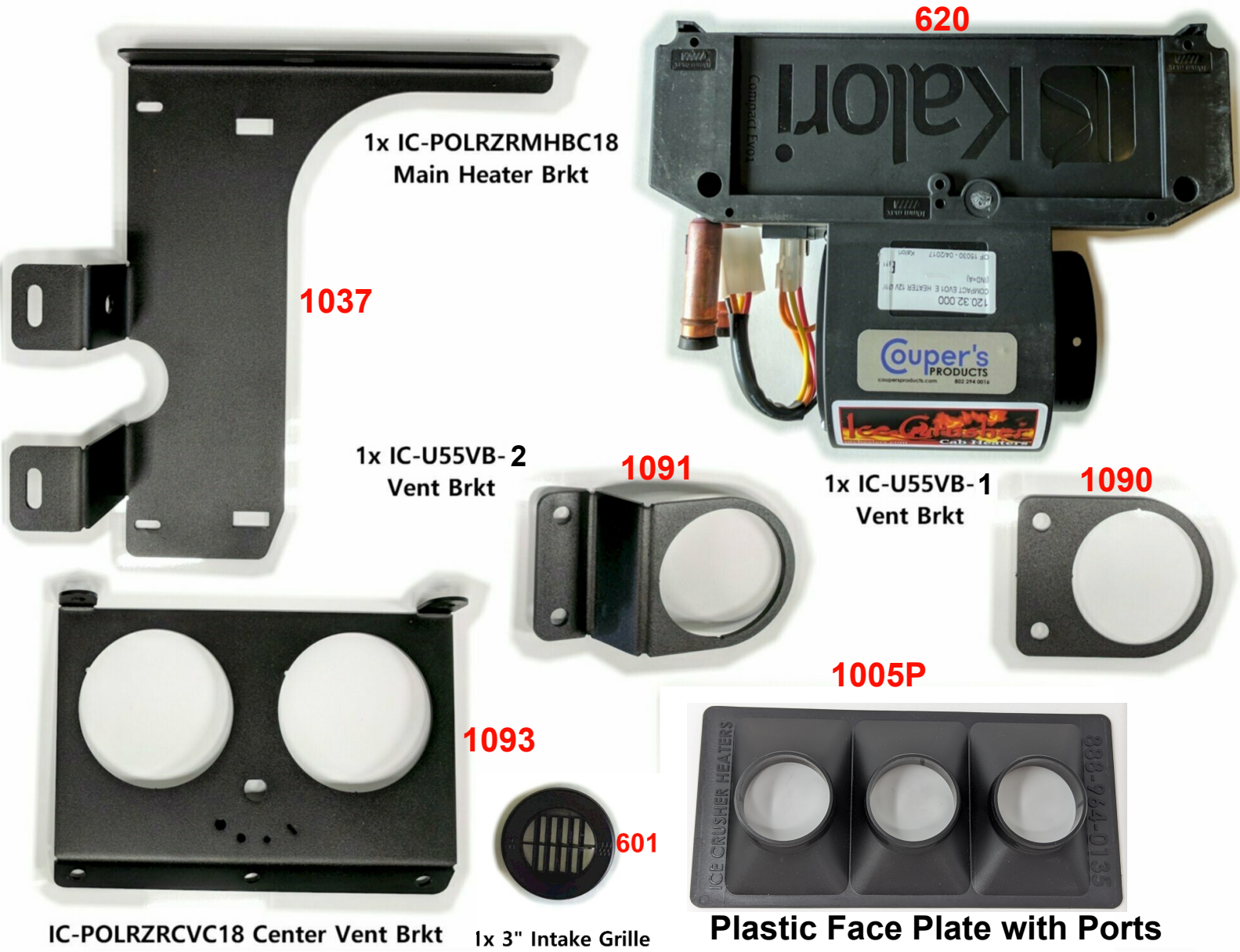
- 1x 1" Brass Y **243**

- 1x 3-Way Ball Valve **246**

- 2x 1/4" Eye Terminal **401**

- 1x IC-POLRZR5WR18 Bezel **1092**
- 1x Switch Nut **345**
- 1x #1 Knob **330**

- 30x 11" Cable Ties **214**



1x IC-POLRZRMHBC18
Main Heater Brkt

1037

1x IC-U55VB-2
Vent Brkt

1091

1x IC-U55VB-1
Vent Brkt

1090

1093

IC-POLRZRCVC18 Center Vent Brkt

601

1x 3" Intake Grille

1005P

Plastic Face Plate with Ports

Vent and Duct Kit

3x 2" Y's

503

2x 3" Vents

502

4x 2" Vents

501

505

28" 2" Duct Hose
(compressed)

18+ Polaris RZR Ice Crusher Heater Install Instructions



Please read all instructions before beginning installation. When working on cooling systems always allow vehicles to cool to avoid being burned or scalded by hot coolant. Always disconnect vehicles negative battery lead before working on electrical systems.

Please note: *Before drilling* any holes check area behind firewall/dash panels to make sure no damage or interference with equipment will occur by drilling holes and fitting of vents.

Remove seats, drive shaft tunnel panel, dash top, center document holder cubby and holder bracket.

Using supplied heater hose template, position template on the top firewall/driveshaft tunnel area, tape template into place. Mark out hole centers as stated on template, remove template. Carefully drill

18+ Polaris RZR Ice Crusher Heater Install Instructions

holes using supplied 1 1/4 hole saw as directed on template. **Caution:** Be careful not to drill into wiring loom on the underside of driveshaft tunnel. Fit 1 1/4 Grommets to the drilled holes.

Please Note: The defrost template is for the Ride Command option. If no ride command option then the defrost vent position may need to be altered. Using supplied defrost vent hole templates, position templates in correct locations as shown in Figure 2 and on the template, mark out hole saw centers as stated on template, remove template. Carefully drill holes using supplied 55mm hole saw as directed on template. **Tip:** Use a knife to remove burrs from the drilled holes to help with fitting of the vents. **Note:** Defrost vents may need to be repositioned because of factory or aftermarket equipment fitment.

Using a 1/4 drill bit, drill through the lower hole, completely through the firewall as circled in Figure 2. Using the 1/4 x 1" self-drilling screw, screw into the top hole as circled in Figure 2. Remove the screw.

Using supplied heater hose cut 5f from hose. Feed the 5f hose through the front grommet. Route the heater hose out the front of the firewall, up the frame upright, behind the shock and over to the lower radiator hose as shown in Figures 5a and 5b. Leave approx. 12" of hose protruding out of the grommet. **Tip:** Using dish soap or a rubber/plastic cleaner on the hose will make the hose slip through the grommets easier. Note: Do not cable tie up hose at this time.

Using the remainder of heater hose feed through the rear grommet. Route the heater hose back along the coolant pipes out to the rear of the UTV, alongside the coolant hose on the right side of the engine to the upper radiator hose as shown in Figures 5a and 5b. Leave approx. 12" of hose protruding out of the grommet. Note: Do not cable tie up hose at this time.

Please Note: Be sure to remove factory shipping plugs from heater fittings if so fitted.

Take heater and fit hoses to heater connectors and tighten #10 clamps as shown in Figure 8. **Tip:** Using dish soap or a rubber/plastic cleaner on the hose will make the hose slip onto the fittings easier.

Fit the supplied 5/16"x5" bolts through the lower mounting holes of heater from the left side of heater.

Take main heater bracket, slip bracket up beside the right side of the heater so as to align the bracket with the heater mounting bolts, push mounting bolts through the bracket, fit the 5/16 nuts to the bolts. Do not fully tighten nuts at this time. Move heater and bracket up into position aligning the mounting in bracket with the holes drilled in the firewall. This will also require pushing some of the heater hose back through the grommets. Temporarily fit the supplied 1/4-20x1 1/2" bolts through the bracket and firewall as shown in Figure 9. Adjust heater into position so as to fit correctly into mounting area and not interfering with any part of the UTV. Mark the heater bracket top mounting holes on the side of the glove box as shown in Figure 10, move heater out of the way and drill the mounting holes using a 1/4 drill bit. Do not bolt up the heater/bracket at this time.

Fit interior LED into heater mounting bracket as shown in Figure 11.

18+ Polaris RZR Ice Crusher Heater Install Instructions

Take Pre-made loom and connect the it to the switch. Pass loom though opening in dash and route the heater plug end of the loom down to the heater connector. Connect the loom connector to the heater connector aligning the locating notches in the plugs as shown in Figure 12a, push the loom connector firmly together. Route the blue and black wire of the loom through the factory grommet in the firewall to the factory "power block". Connect black wire to the "Neg" terminal using the supplied $\frac{1}{4}$ ring terminal as shown in Figure 12b. Install eye terminal and connect the blue wire to the "acc" terminal using the supplied $\frac{1}{4}$ ring terminal as shown in Figure 12b. Reconnect battery, turn key on to check fan operation, disconnect battery. Use cable ties to secure wiring loom.

Using Figure 12 as a guide cut duct hoses to length (**lengths measured with the duct hose in its compressed state, measure and cut accordingly**) Make up hose assemblies using supplied 2" Y connectors as shown in Figure 13. **Tip:** To attach duct hoses to Y's and/or Vents either twist Duct Hose or Vents in a "screw" action. Use cable ties around all duct hose connections.

Fit duct hoses as shown in Figures 14a- 14b. Install 2" defrost vents.

At this time mount the heater using supplied $\frac{1}{4}$ -20x $\frac{3}{4}$ " bolts through the top heater brackets into the glove box, fit supplied $\frac{1}{4}$ " fender washer and $\frac{1}{4}$ " nut. Using supplied $\frac{1}{4}$ -20x1 $\frac{1}{2}$ " bolts, fit a supplied $\frac{1}{4}$ " washer to the bolt, pass through the lower bracket hole, fit another $\frac{1}{4}$ washer, push bolt through the firewall, fit supplied $\frac{1}{4}$ " fender washer and $\frac{1}{4}$ " nut. Note: This area is a tight fit, patience will be required to fit the nut. Fit a supplied $\frac{1}{4}$ " washer to the $\frac{1}{4}$ " x 1" self-drilling screw, pass through the next lower bracket hole, fit another $\frac{1}{4}$ " washer, screw into the firewall. Adjust heater and tighten bolts. Do not over tighten screw.

Fit duct hoses as shown in Figures 14c- 14f. Note position of left and right lower vent and center lower vent brackets locate mounting positions as shown in Figures 14d and 14e. Use these brackets to mark out mounting hole, carefully drill holes using a $\frac{1}{4}$ " drill bit. Mount brackets using supplied $\frac{1}{4}$ -20x $\frac{3}{4}$ " bolts, $\frac{1}{4}$ " washers and $\frac{1}{4}$ " nuts.

Fit red switch bezel onto switch. Mount the heater switch into the center vent bracket as shown in Figure 15, fit 7/16 washer and switch nut, tighten nut and fit knob. Fit Center vent into position, mark mounting holes, remove the bracket, carefully drill holes using a $\frac{1}{4}$ " drill bit. Refit the center vent bracket, use the supplied push-pins to mount the bracket as shown in Figure 15. Fit the 3" vents into position.

Drain cooling system by removing lower radiator hose. **Important Tip:** If you have the equipment to clamp off the hoses where the Y fitting is to be installed you won't have to drain cooling system this makes installation much easier.

Please Note: Before cutting any hose, be sure that the placement of the Y connectors will not interfere with any part of the UTV.

Locate the lower radiator hose at the front of the UTV. Using Figures 16a and 16b as a guide cut radiator hose as shown removing approximately a 1" to 1.5" section of the hose. Insert the Y connectors exactly in the radiator hose as shown in Figures 16b. Route the heater heater hoses over to the Y Fitting, cut to length and secure with a #10 and #16 Hose Clamps

18+ Polaris RZR Ice Crusher Heater Install Instructions

Locate the Oil Cooler Bypass hose from the Passenger side rear wheel well as shown in Figure 17 & 18. Cut a 1" to 1.5" piece of hose out and insert the 3-Way ball valve as shown. Cut the 5/8" Heater Hose to length and secure with #10 Hose Clamps. Turn the 3-Way Valve handle perpendicular to the Oil Cooler Hose to send hot coolant to the heater and parallel to stop coolant from reaching the heater. **Please Note:** Make sure all hoses are as far away as possible from driveshaft, steering shaft, sharp objects and the exhaust system etc. When routing the hoses make sure that hoses make nice sweeping bends so as not to cause any kinking of the hoses. Use supplied cable ties as necessary to secure hoses.

Install the intake grill as shown in Figure 19

Important: Refill cooling system as per manufacturer's procedure. Reconnect battery. Start and run the vehicle at a fast idle and run up to normal operating. Check for leaks. Check operation of heater.

Reassemble UTV as required.

Allow vehicle to cool and recheck cooling system level and coolant ratio, fill as required. Refill cooling system as per manufacturer's procedure. Start and run the vehicle at a fast idle and run up to normal operating temperature. Check for leaks. Check heater operation. Allow vehicle to cool and recheck cooling system level and coolant ratio, fill and/or alter coolant ratio as required.

Caution: When working on cooling systems always allow vehicles to cool before opening radiator cap to avoid being burned or scalded by hot coolant.

If the heater fails to blow hot/warm air once the vehicle is up to operating temperature, there may be an air lock in the heater unit. Temporarily block off the top/inlet radiator hose at radiator. Start and run vehicle up to operating temperature. Feel the outlet/lower hose from heater until it feels hot. The heater now should be blowing hot/warm air. Remove clamp from radiator hose. The heater should continue to blow hot/warm air. This procedure may have to be repeated a few times to remove air from system. Note: Removing the radiator cap temporarily will also aid in the removal of trapped air. Allow vehicle to cool, restart the vehicle and run up to operating temperature, recheck heater operation. **Please note:** Heater output will be limited at idle, all testing should be done at a fast idle.

18+ Polaris RZR Ice Crusher Heater Install Instructions

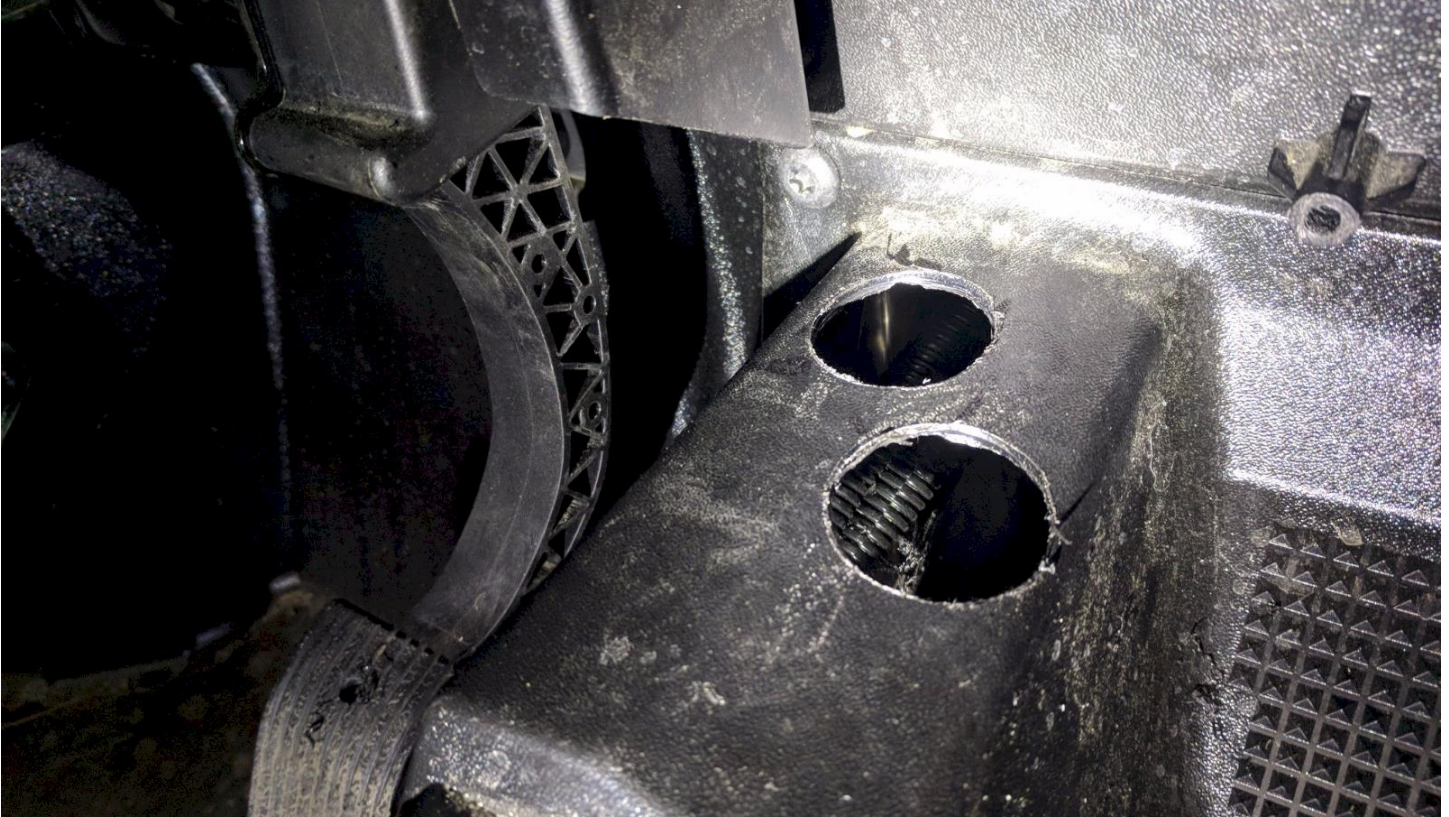


Figure 1



Figure 2

18+ Polaris RZR Ice Crusher Heater Install Instructions



Figure 3



Figure 4

18+ Polaris RZR Ice Crusher Heater Install Instructions



Figure 5a

18+ Polaris RZR Ice Crusher Heater Install Instructions

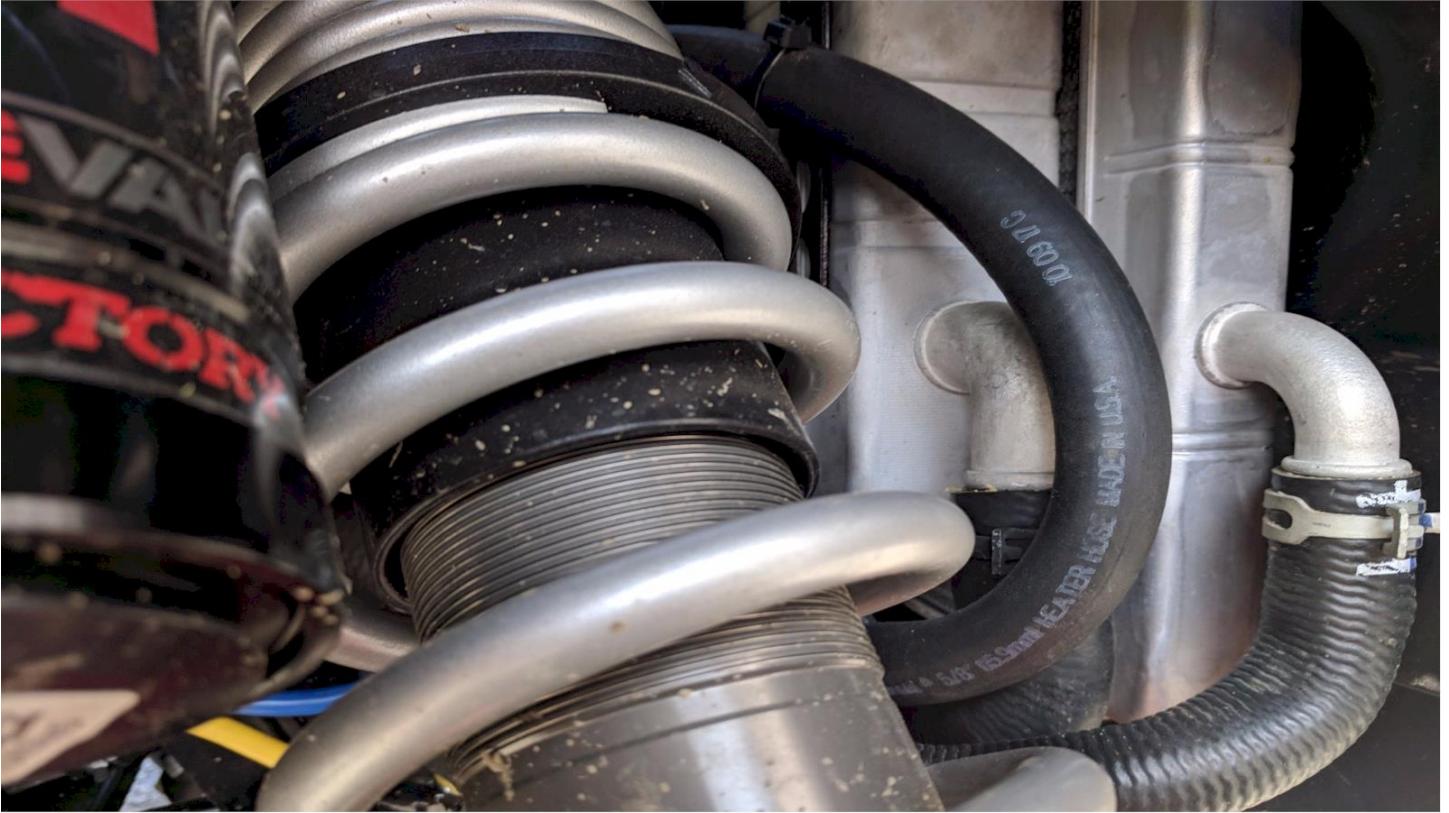


Figure 5b

18+ Polaris RZR Ice Crusher Heater Install Instructions



Figure 6a

18+ Polaris RZR Ice Crusher Heater Install Instructions

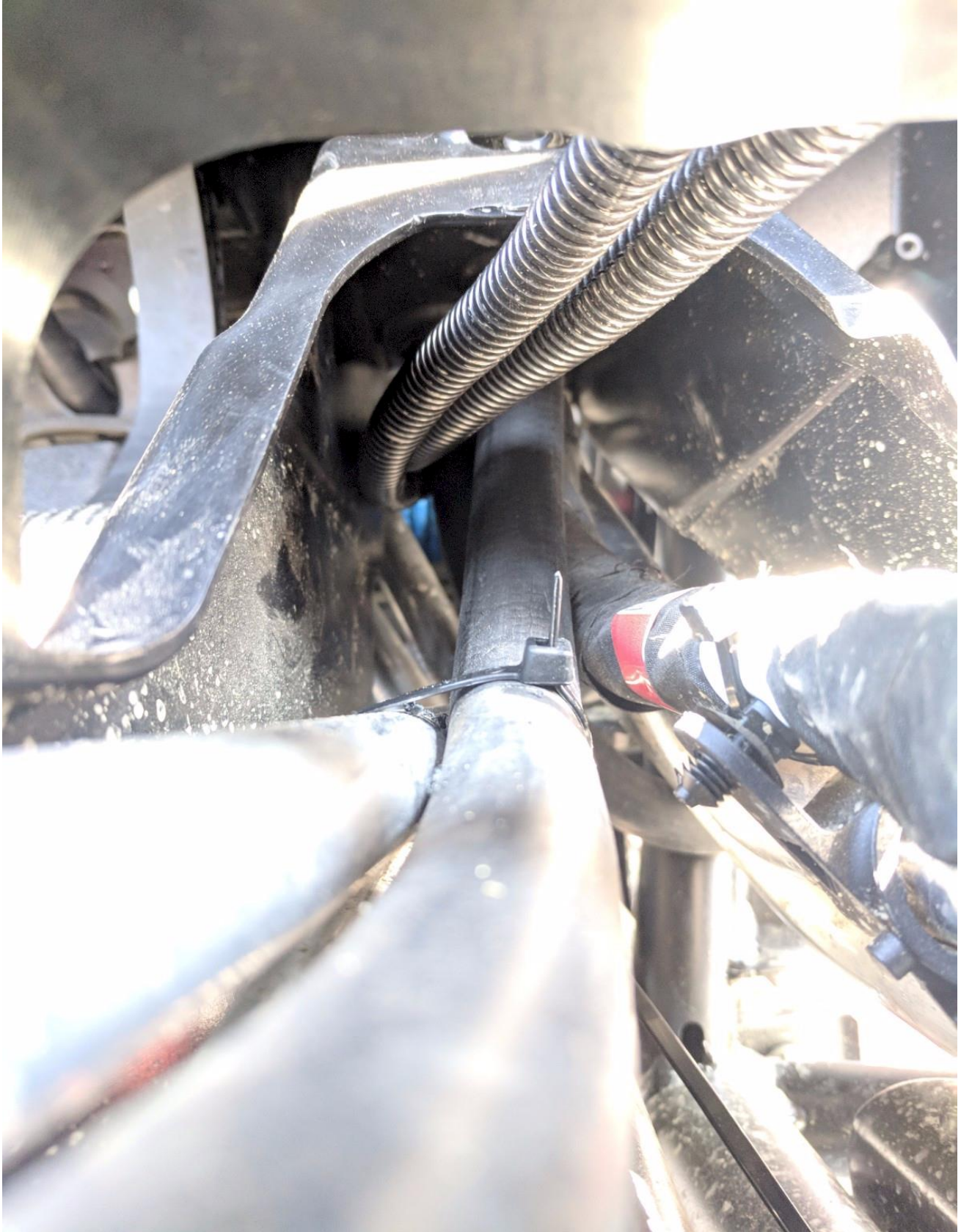


Figure 6b

18+ Polaris RZR Ice Crusher Heater Install Instructions



Figure 6c

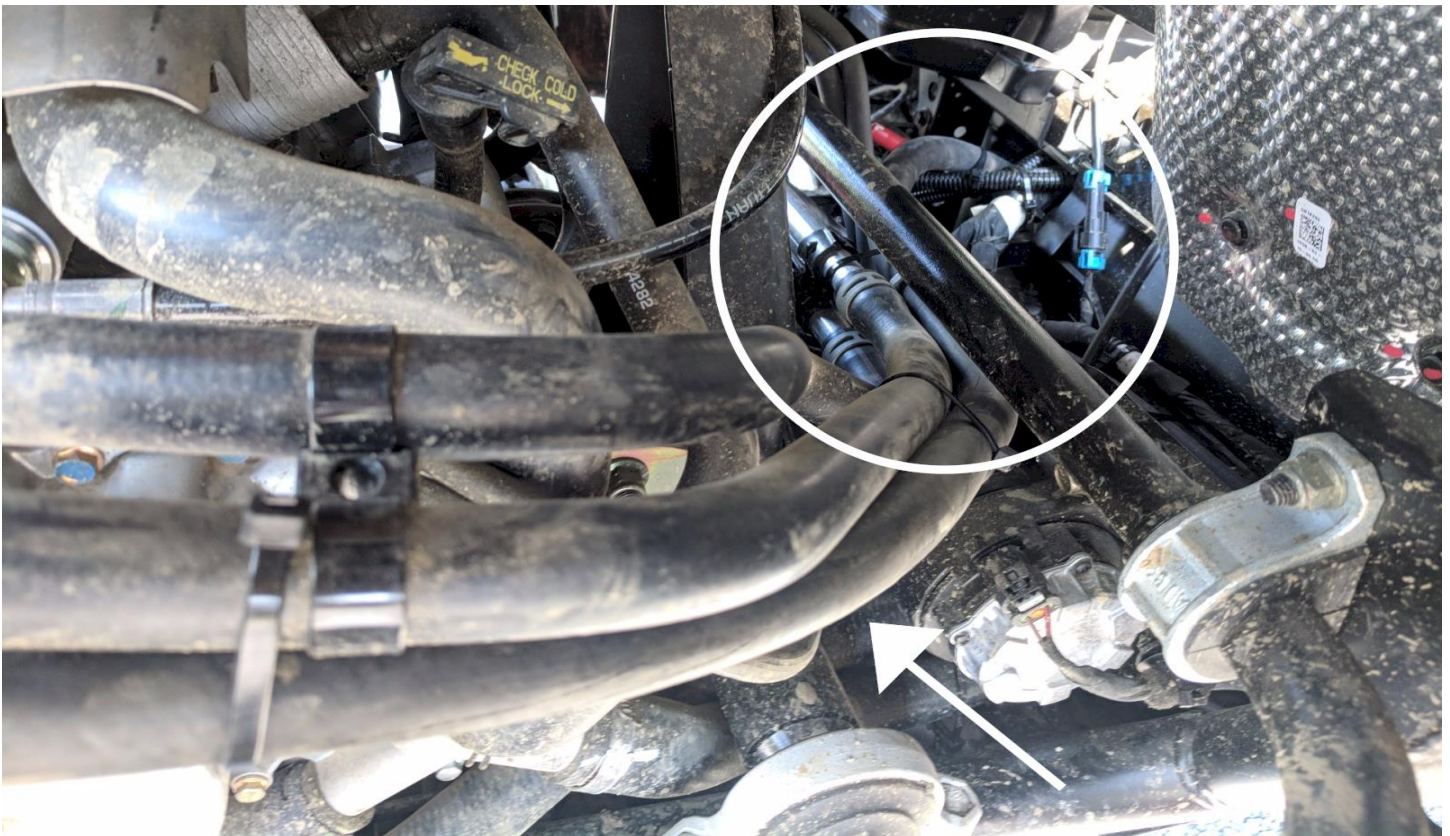


Figure 6d

18+ Polaris RZR Ice Crusher Heater Install Instructions



Figure 8

18+ Polaris RZR Ice Crusher Heater Install Instructions

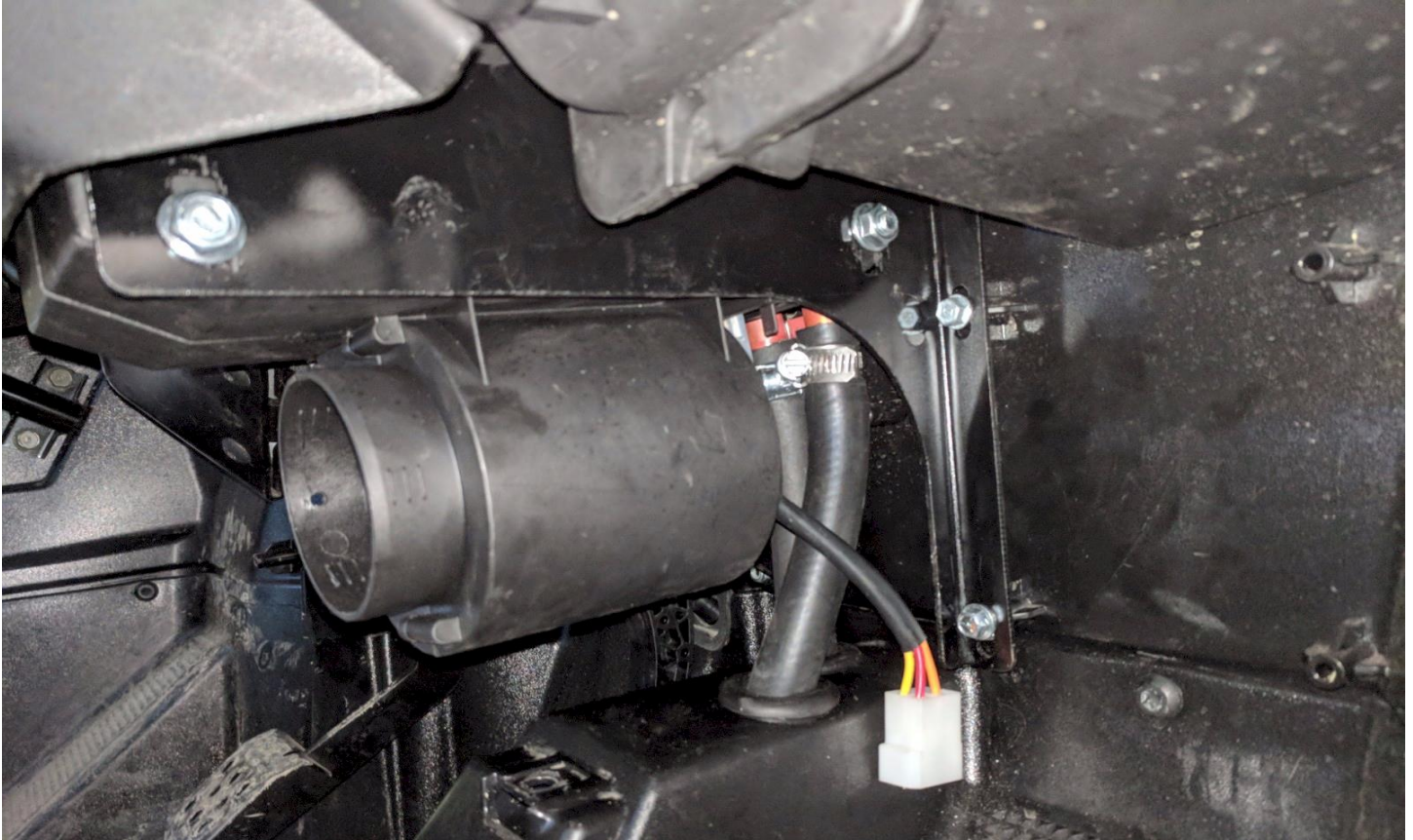


Figure 9



Figure 10

18+ Polaris RZR Ice Crusher Heater Install Instructions

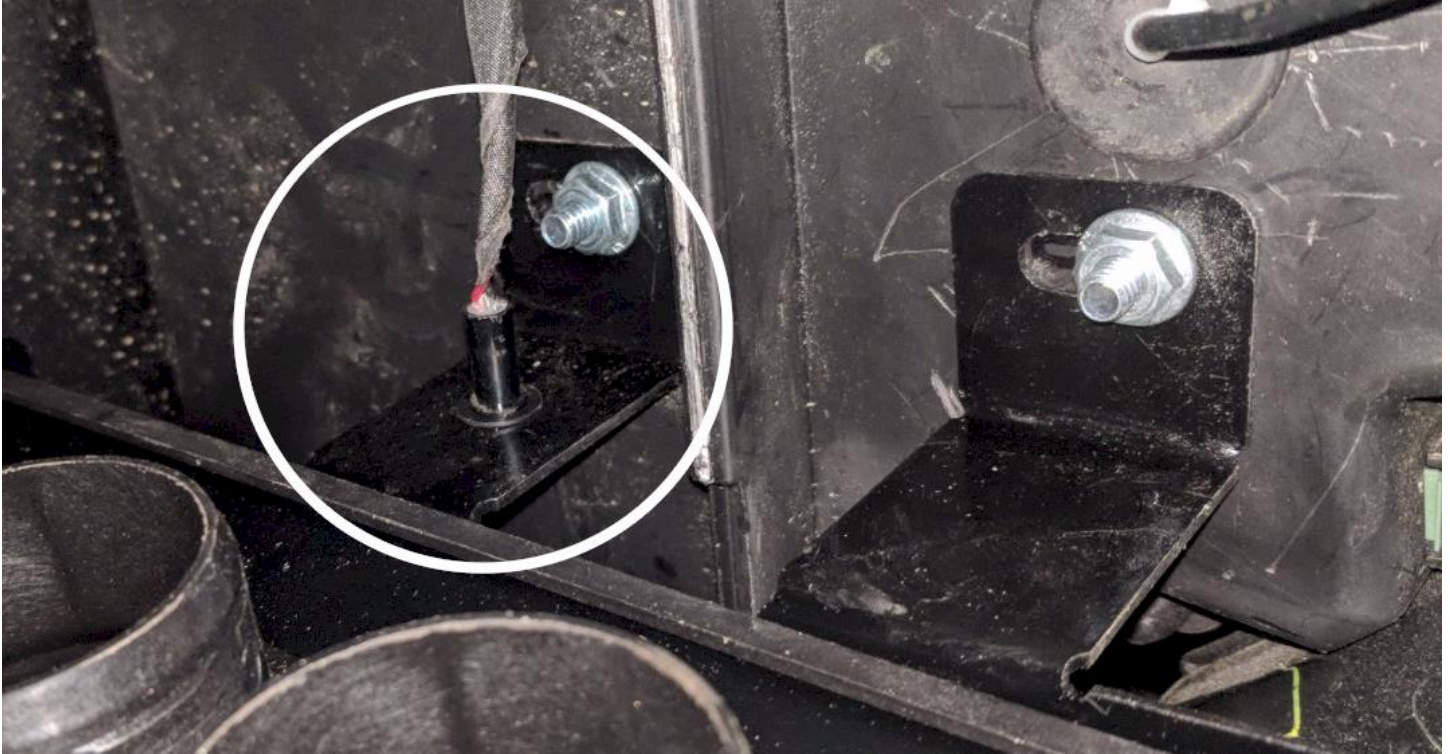


Figure 11

18+ Polaris RZR Ice Crusher Heater Install Instructions

**Align Connector
Plugs Locating
Notches**

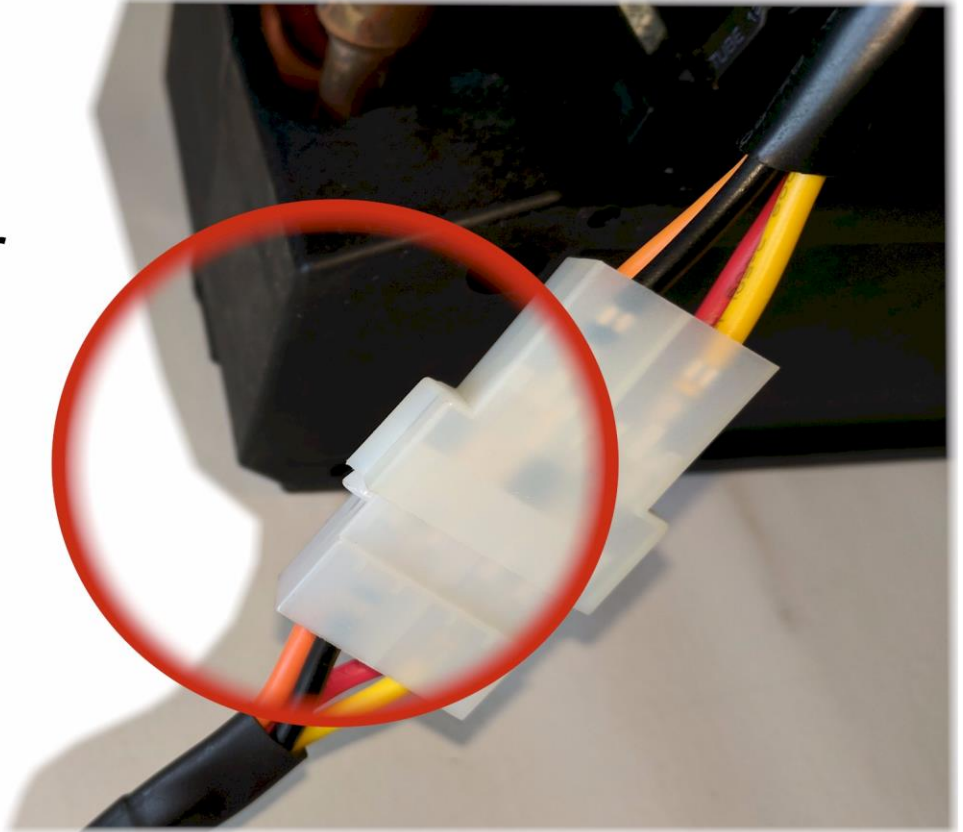


Figure 12a



Figure 12b

18+ Polaris RZR Ice Crusher Heater Install Instructions

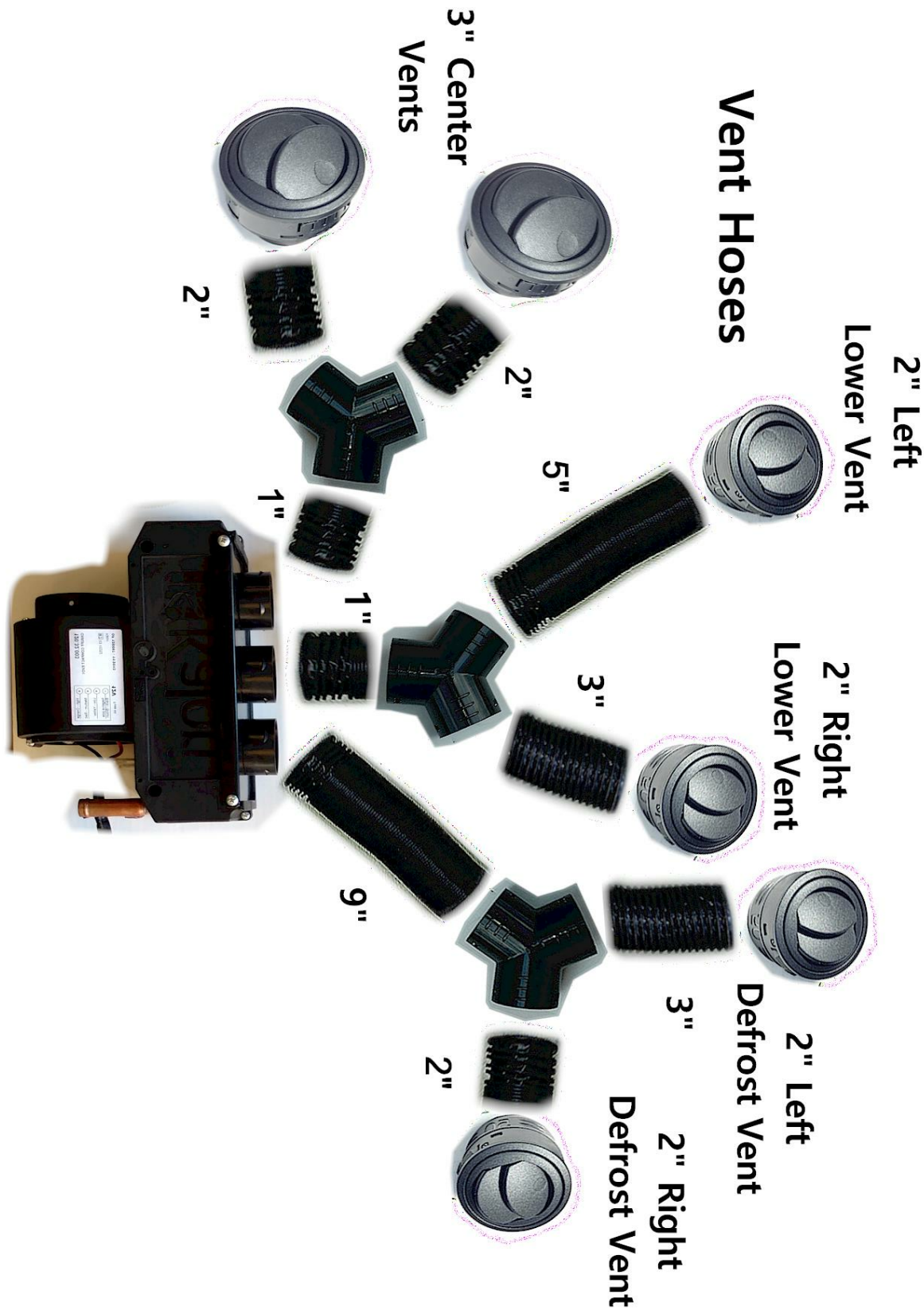


Figure 13

18+ Polaris RZR Ice Crusher Heater Install Instructions



Figure 14a

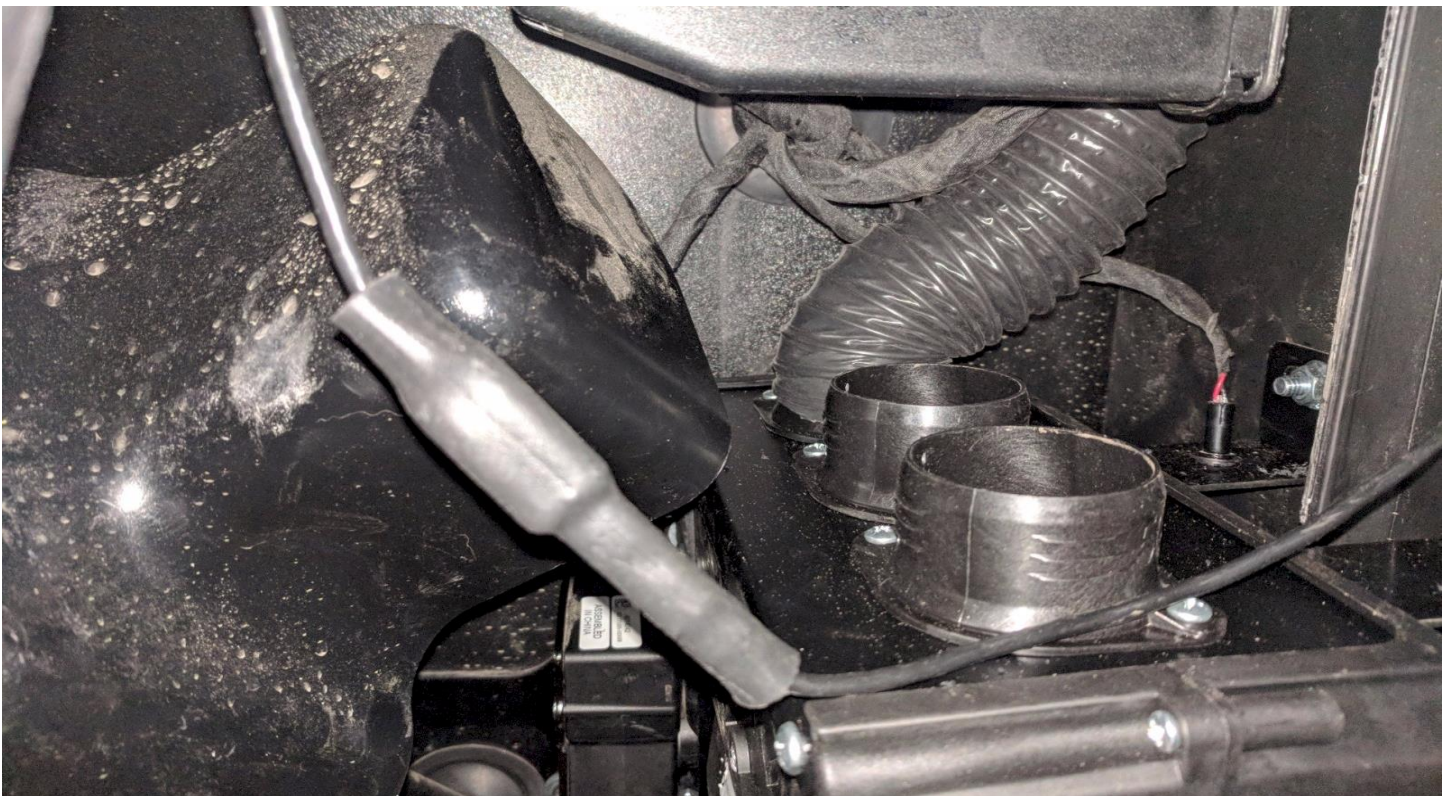


Figure 14b

18+ Polaris RZR Ice Crusher Heater Install Instructions



Figure 14c

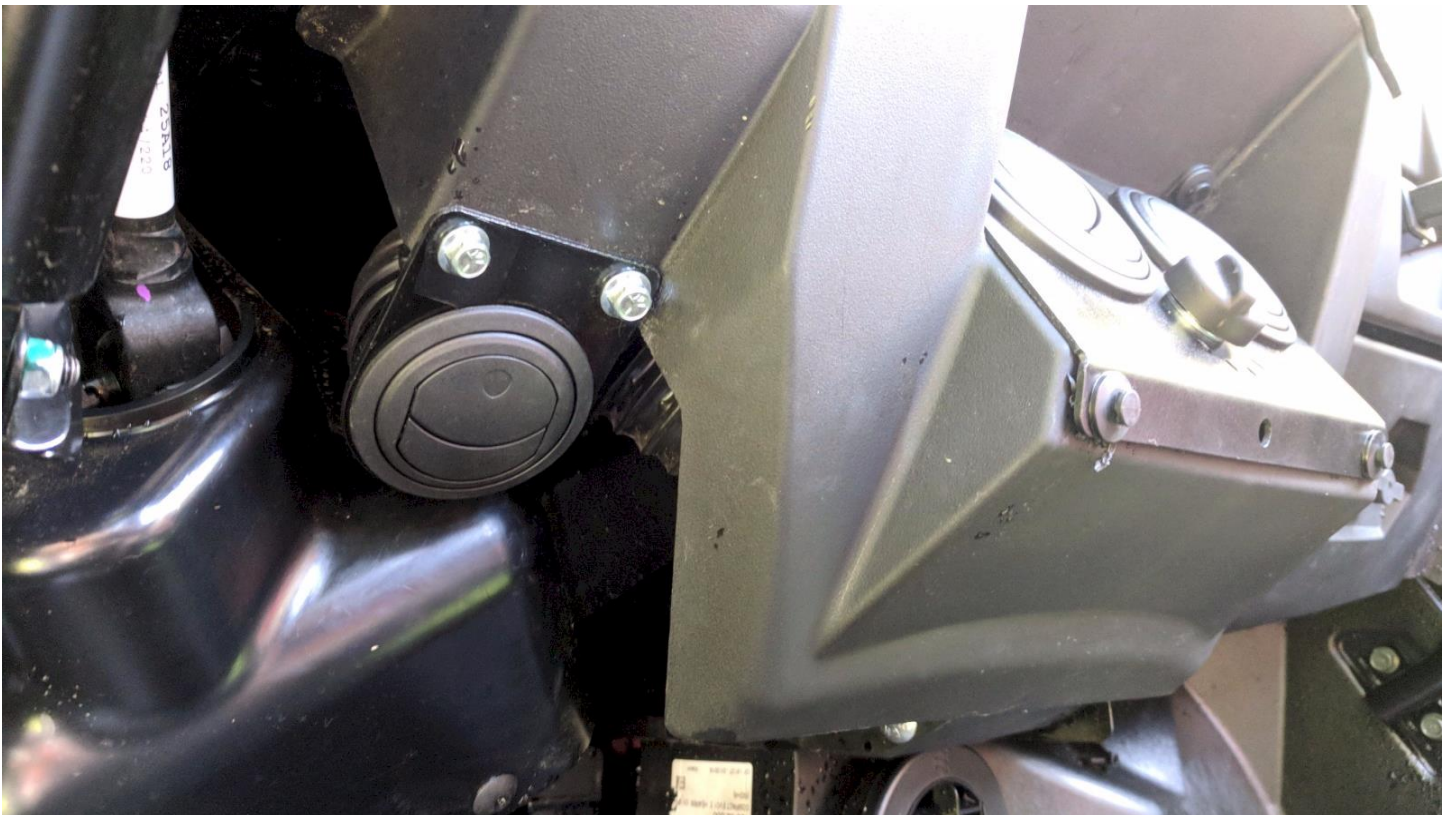


Figure 14d

18+ Polaris RZR Ice Crusher Heater Install Instructions



Figure 14e

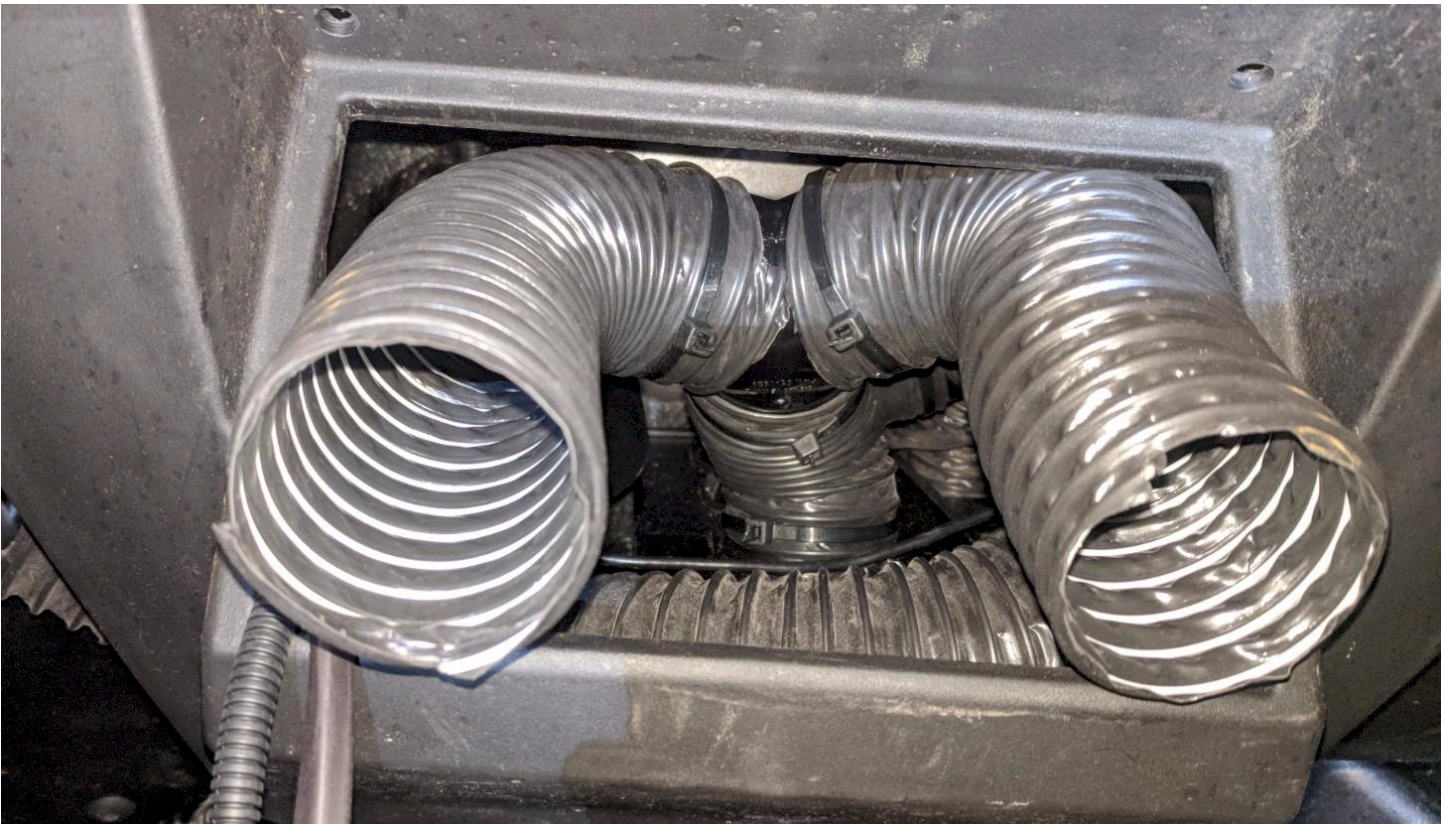


Figure 14f

18+ Polaris RZR Ice Crusher Heater Install Instructions



Figure 15

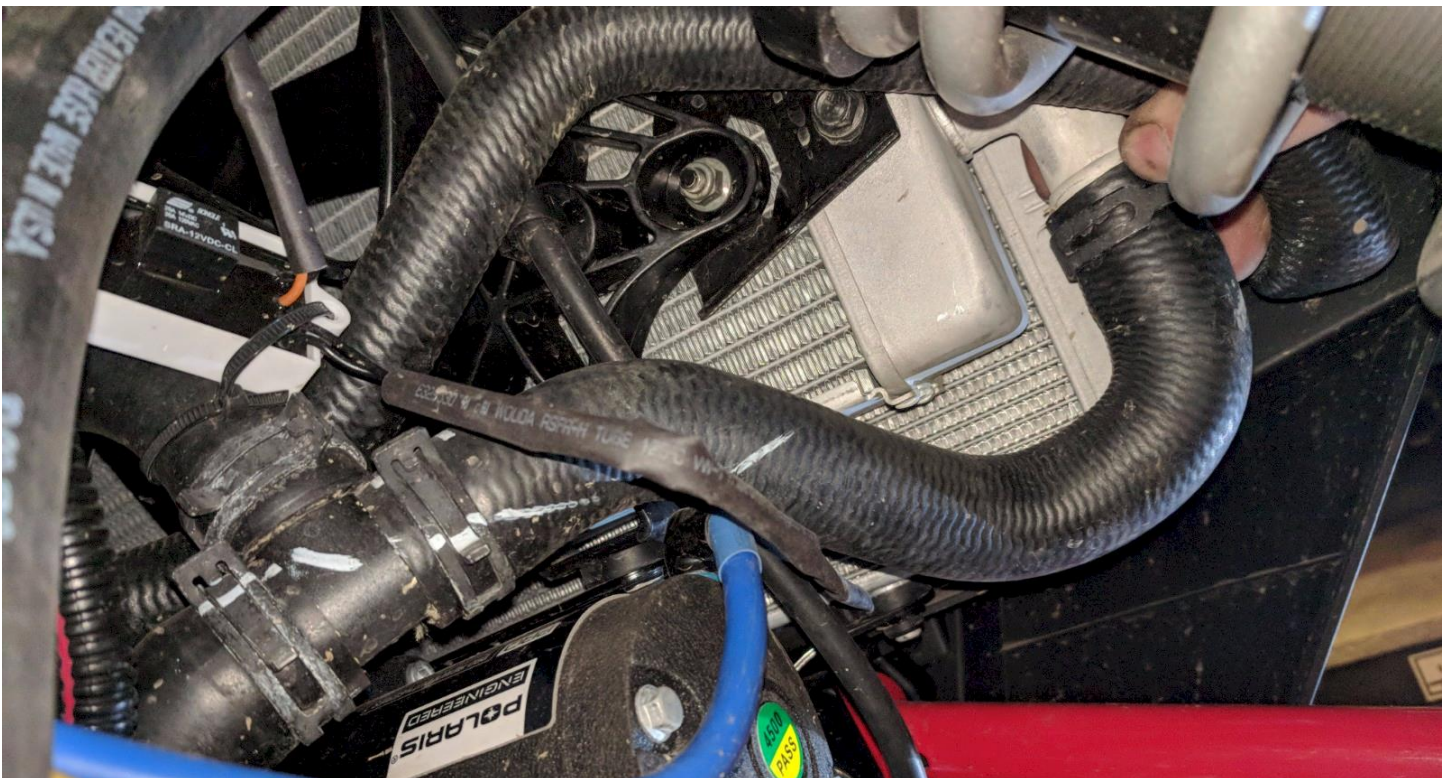


Figure 16a

18+ Polaris RZR Ice Crusher Heater Install Instructions

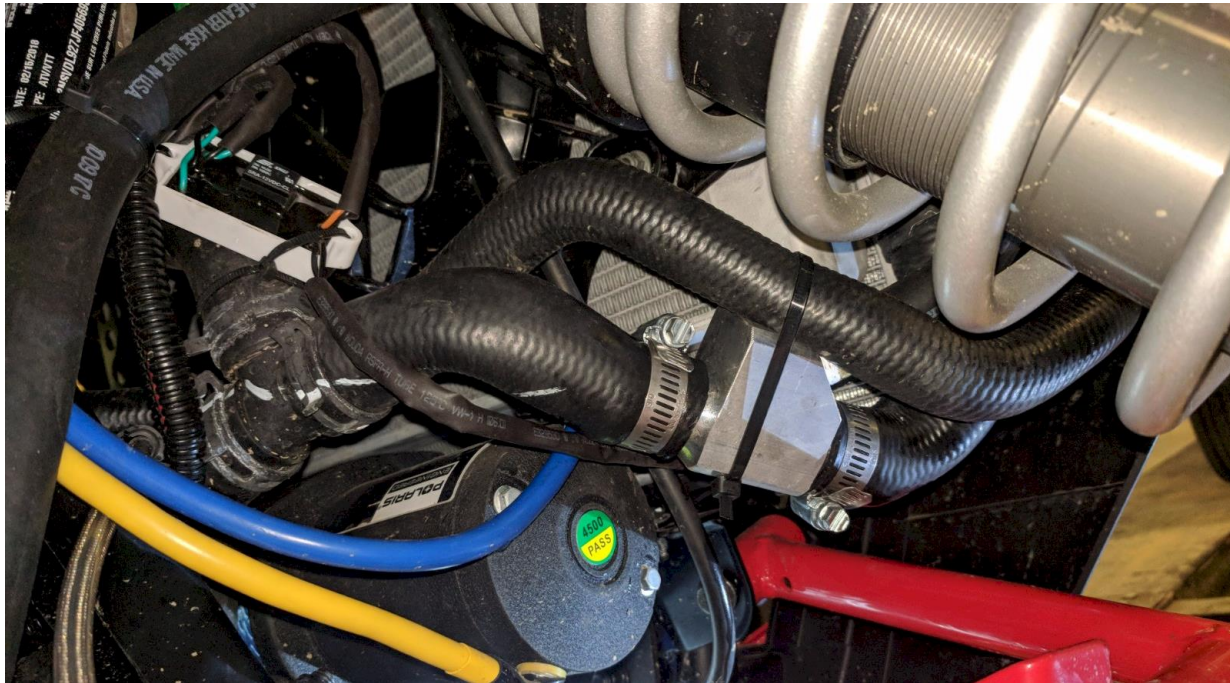


Figure 16b

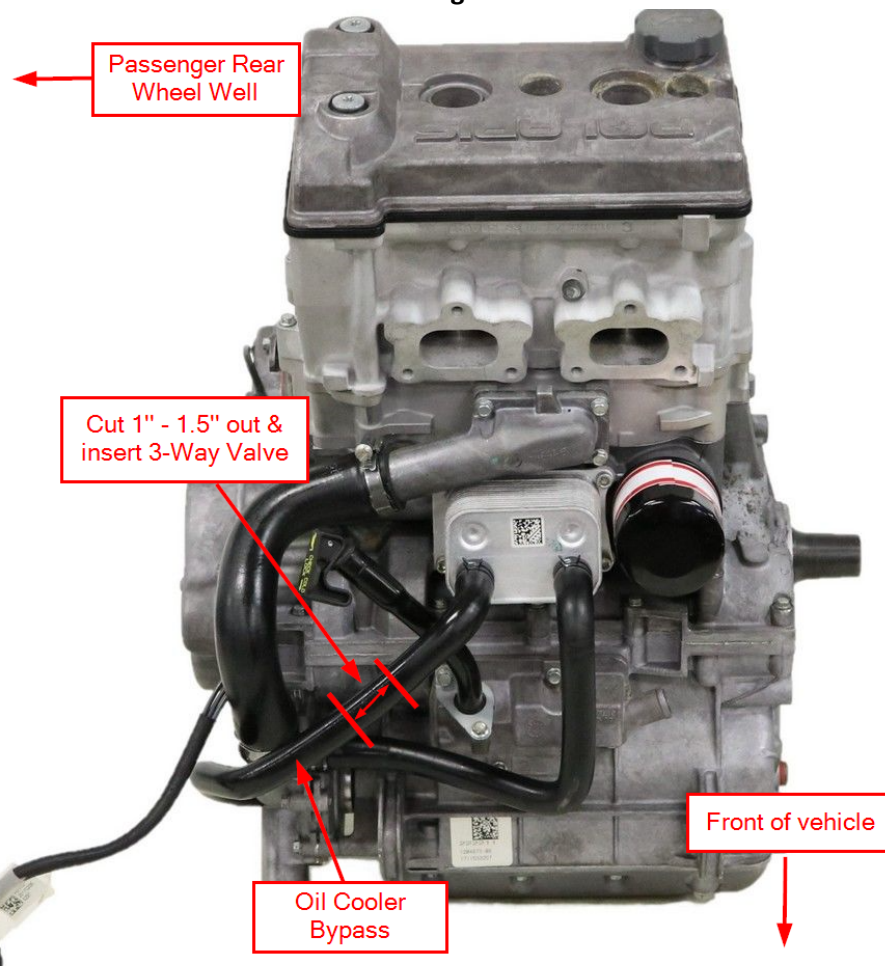


Figure 17

18+ Polaris RZR Ice Crusher Heater Install Instructions

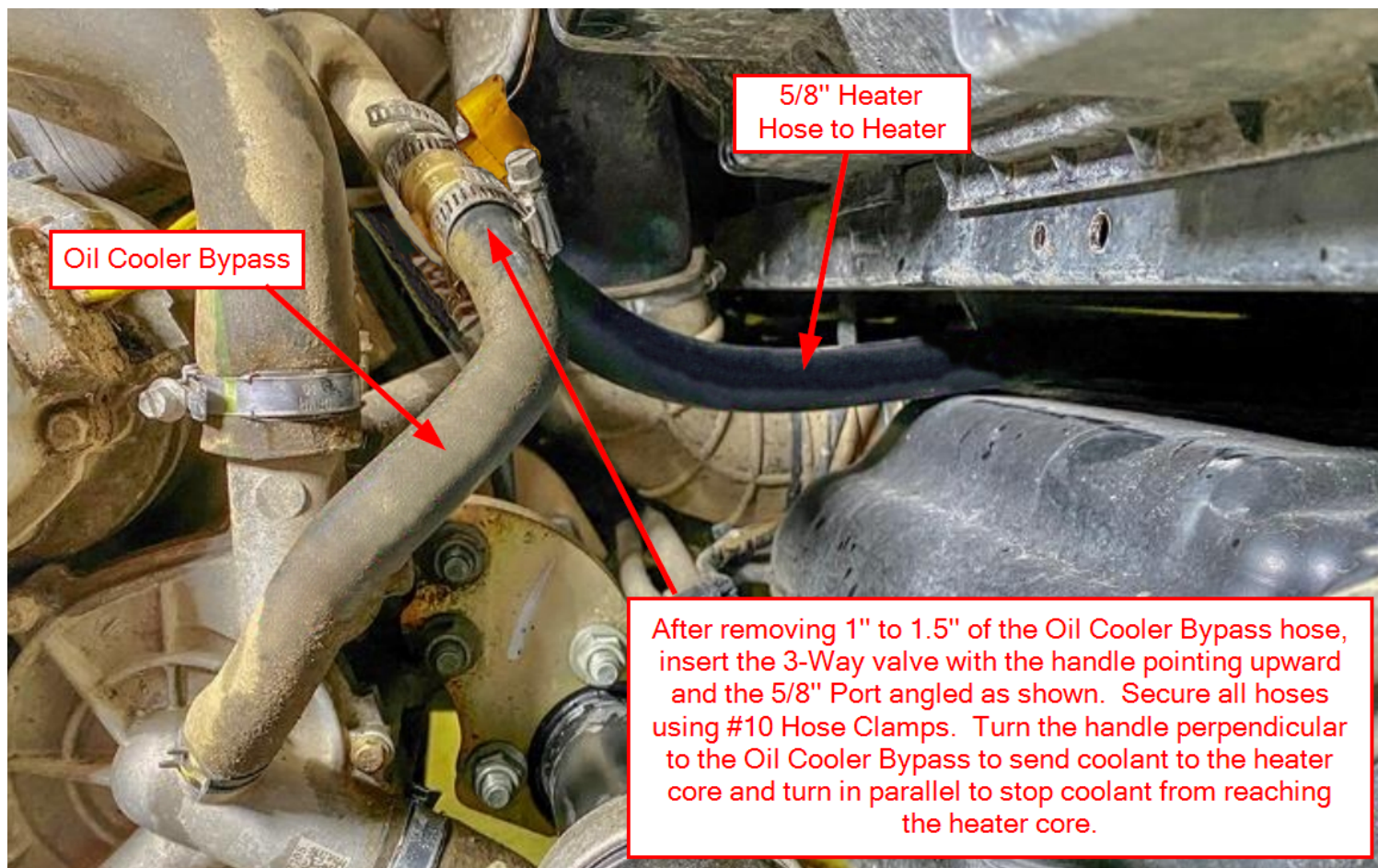


Figure 18

**WINTER
MODE**



**SUMMER
MODE**



18+ Polaris RZR Ice Crusher Heater Install Instructions



Figure 19

18+ Polaris RZR Ice Crusher Heater Install Instructions

HEATER WARRANTY – utvheaters.com and coupersproducts.com

***Couper's Products/UTV Heaters.com Heater Warranty. 3 Year/36 Month Limited Warranty**

Couper's Products warrants your UTV Heater System to be free from defects in material and craftsmanship under normal use and service by the original consumer purchaser (end user) for a period of Three (3) year from the date of purchase on all components except electrical components including but not limited to, motor, switch, wiring and resistor. Electrical components are warranted to be free from defects in material and craftsmanship under normal use and service by the original consumer purchaser for a period of One (1) year from the date of purchase. The warranty is null and void if the system has been damaged by accident, improper installation, unreasonable use, lack of proper maintenance, unauthorized repairs or modifications, or causes not arising from defects in materials and craftsmanship.

Couper's Products obligation under this warranty are limited to repair of the product at Couper's Products production facility, or the replacement of the product at Couper's Products option and at Couper's Products expense. Any expense involved in the removal, reinstallation, or transportation of the product is ***not*** covered by this warranty. Prior to return of any product to Couper's Products customer must contact Couper's Products customer service, (802) 294 0016, and obtain a Return Authorization Number. This number must be marked on exterior of carton for easy identification. Warranty product received at Couper's Products without a Return Authorization Number may be returned at expense of sender.

Postage must be prepaid, and the original dated proof-of-purchase must be included. Couper's Products will not be liable for any damages sustained in transport due to improper packaging or handling. The acceptance by Couper's Products of any product returned shall not be deemed as an admission that the product is defective or in any violation of any warranty.

This warranty is Couper's Products only express warranty of this product. We reserve the right to make changes to products and policy that are in the best interest of Couper's Products. No implied warranty shall extend beyond One (1) or Three (3) year period from the date of the original consumer (end user) purchase. Couper's Products will not be liable for any damages, for loss of use of this product, nor for any consequential damages, costs or expenses.

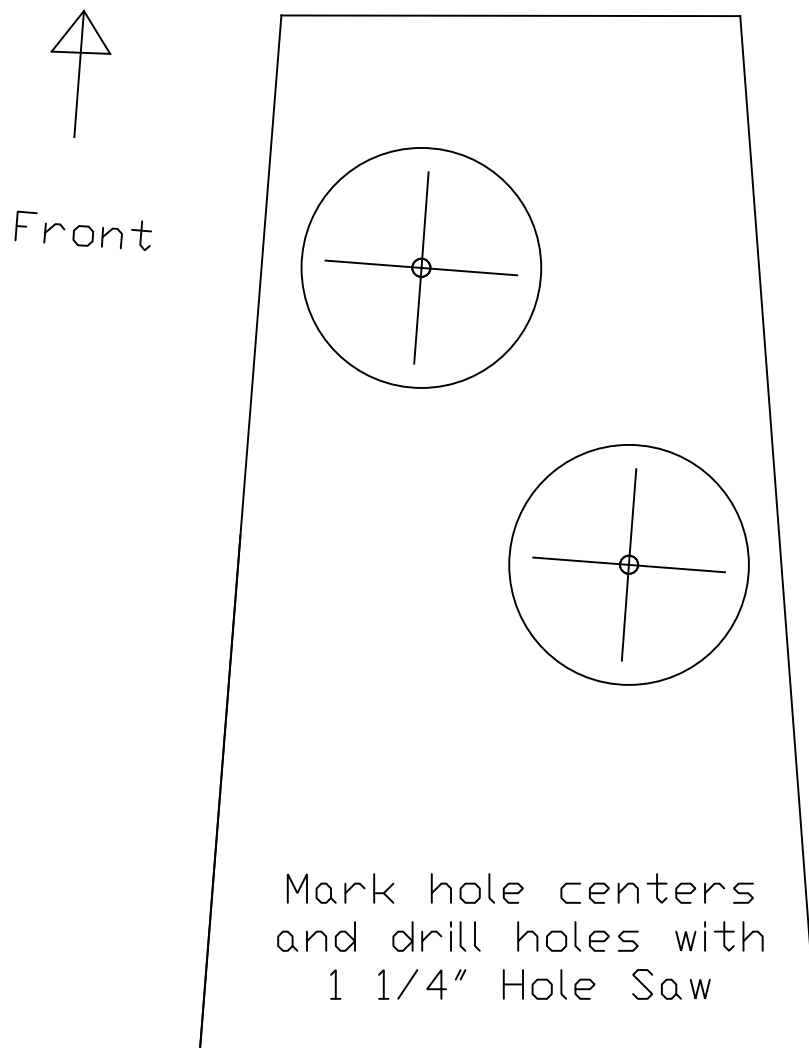
Some states do not allow limitations on how long an implied warranty lasts or the exclusion of incidental or consequential damages, so the above limitations and exclusions may not apply to you. This warranty gives you specific legal rights and you may also have other rights not mentioned here that vary from state to state.

After receiving a Return Authorization Number send defective product to:

Ice Crusher Heaters

23001 Industrial Blvd

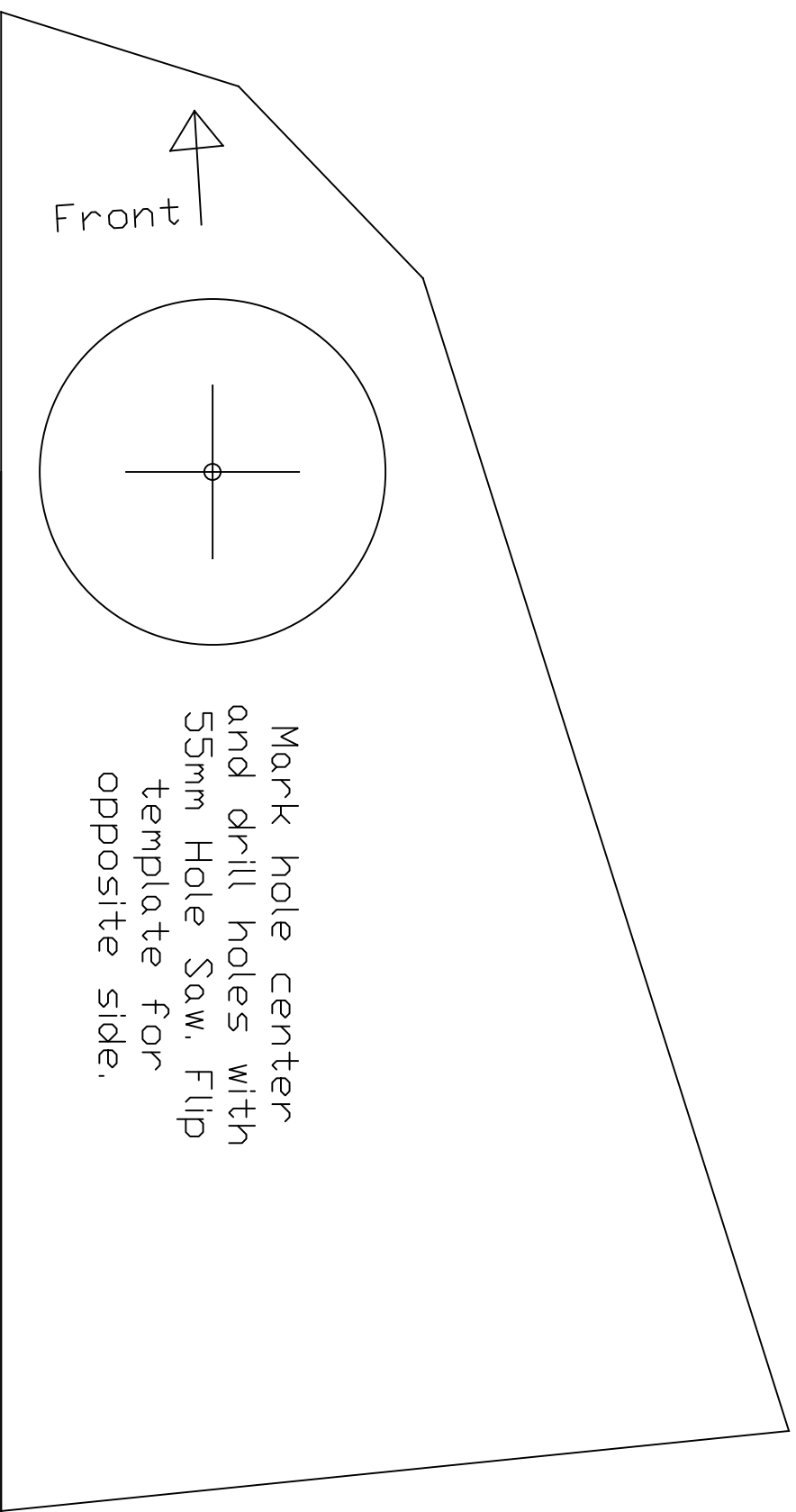
Rogers, MN, 55374



Align template with driveshaft tunnel
moulding as shown in Figure 1

18+ Polaris Ranger RZR Hose Hole Template

Please note: Before drilling any holes check area
behind firewall/dash panels to make sure no
damage or interference with equipment will occur by
drilling holes and fitting of vents.



Align template with dash moulding as
shown in Figure 2

18+ Polaris Ranger RZR Defrost Vent Template (Ride Command)

Please note: Before drilling any holes check area behind firewall/dash panels to make sure no damage or interference with equipment will occur by drilling holes and fitting of vents.