

ICE CRUSHER HEATERS



2023+ Honda Pioneer 700 Heater

ICCH-UD-C-HONP700-23

1x 3" Hole Saw



1x 54mm Hole Saw

1x Hole Saw Arbor



6x #10 Hose Clamps



2x M6-12mm Bolts



4x #8 Sheet Metal Screws



3x 1/4" x 1" Self Tapping Screws



5x 1/4" Push Pins



1x 5/8" Coupler



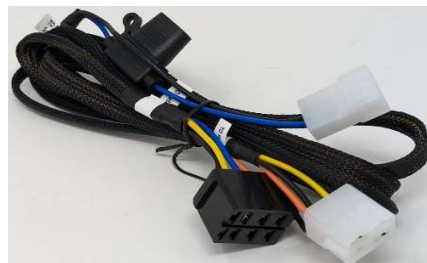
1x 5/8" 90 Degree Fitting



1x - Dash Switch



1x - Dash Switch Power Loom



1x - Honda Pigtail



2x - 15" Zip Tie



30x - 11" Zip Ties





4x 2" Vents



5/8" Heater Hose
11 Feet - Standard



1x Standard Heater

#1164 - Vent Bracket



20" - 2" Duct Hose



#1163 Heater Mounting Bracket



3" - 3" Duct Hose



3" Grill 3" Grill Port

ICE CRUSHER HEATERS

Please read all instructions before beginning installation. It is easiest to physically split the instructions in two halves, one the text portion and the other the picture portion. It makes referring back and forth between the two much simpler.

When working on cooling systems always allow vehicles to cool to avoid being burned or scalded by hot coolant.

Always disconnect vehicles negative battery lead before working on electrical systems.

Please note: Before drilling any holes check area behind firewall/dash panels to make sure no damage or interference with equipment will occur by drilling holes and fitting of vents.

1. Pre-Installation

- a. Remove the front hood cover and set aside
- b. Remove the front seat and remove the plastic splash cover as shown in Figure 1. Optionally, remove the driver side plastic cover to gain additional access to the engine area.
- c. Remove the center dash retaining net and grommets as shown in Figure 2. Remove the net from the grommets and replace the grommets in their original holes.

2. Vents and Duct Hose Routing

- a. From the back of the instruction manual, cut out the Passenger and Driver side lower vent templates. Position them as shown in Figure 3. Transfer the hole centers on the template to the Firewall, use the included 54mm Hole Saw to drill the holes. Deburr as necessary. **Installation Tip: After cutting the 54mm vent holes, use a razor blade to cut a small “V” shaped notch anywhere along the hole. Each 2” Vent has an anti-rotation notch molded into it, fit the notch into the ‘V’ groove for easier install. See Figure 4.**
- b. Using the 2” Duct Hose, Compress the hose tight together and measure two pieces of 5” compressed Duct Hose. Use a wire cutter to cut the metal liner and split the pieces. Use a zip tie to secure the pieces of Duct Hose to the 2” Vents. Insert the hose in each of the holes drilled, align the vent anti-rotation notch and press the vents in place. Route the hose toward the front of the vehicle.
- c. Cut out the Driver Side Defrost Hole Template and position it as shown in Figure 5. Transfer the hole center, and **use a 1/8” drill bit to create a starter hole.** Because of the location of this hole it may be necessary to drill the 54mm hole at a slight angle depending on the drill you have. Drill the 54mm hole but do not allow the hole saw to plunge through the opening. Debur as necessary.

2023+ Honda Pioneer 700 Heater

- d. Cut out the Passenger Side Defrost Hole Template and position it as shown in Figure 6. Transfer the hole center, again use a 1/8" drill bit to start a hole. This will keep the 54mm Hole Saw from wondering around given the even plastic surface.
- e. Locate the Defrost Bracket and insert the remaining 2" Vents taking note of the bracket orientation: **The Defrost Bracket is directional as shown in Figure 8. Position the Flat edge on the Driver Side as shown in Figure 8.**
- f. Cut the remaining 2" Duct Hose into 5" Compressed pieces. Attach the 2" Duct hose to the back of the 2" Vents using zip ties. Route the hose through the openings drilled and pull the 2" Duct hose to the front of the vehicle. Because of the tight corners it may be necessary to pull the 2" Duct Hose in an alternating manner working it through the openings.
- g. Cut out the remaining Air Intake Template and position against the lower Firewall as shown in Figure 9. Transfer the hole center and drill using the 3" Hole Saw. Deburr as necessary. Insert the 3" Flange and secure it with four #8 Metal Screws as shown in Figure 9. Do not install the Cover Plate yet.
- h. Use the 3" Duct Hose and secure it to the back of the 3" Flange using a 15" zip tie. Once secured, attach the front Cover Plate for the 3" Flange as shown in Figure 10. Leave the hose until later.

3. Switch and Wiring

- a. From the front of the vehicle locate the back side of Cigarette Lighter plug and disconnect the electrical connection.
- b. Use the included Honda Wiring Pigtail and connect one end to the Cigarette Lighter. Connect the other end to the original Cigarette Lighter Plug as shown in Figure 11.
- c. Using the Dash Switch Wiring Harness and connect the 2-Pin Plug to the 2-Pin Plug found on the Wiring Pigtail.
- d. Locate a suitable Dash Switch mounting location like the one shown in Figure 12, remove the blank-off plate. Route the black Dash Switch connector from the wiring harness through the opening. Attach it to the Dash Switch and install the switch. Leave the remaining harness until later.

4. 5/8" Heater Hose Routing & Hookup

- a. Using the 5/8" Heater Hose, cut the 11 Feet of hose in half. Route the two pieces of 5/8" Heater Hose from the front of the vehicle down between the Firewall and the Splash Guard as shown in Figure 13. Route the hose toward the engine bay following the OEM cooling lines.
- b. Once in the engine bay route the 5/8" Heater Hoses toward the Passenger side of the engine as shown in Figure 14.
- c. If available, use Hose Clamp Off Tools to clamp either side of the Oil Cooler Hose bend shown in Figure 15. If not clamps are available it's best to drain the coolant and store it for reuse later. Remove the corner of the Oil Cooler Hose as shown in Figure 15.
- d. Locate the 5/8" Straight Coupler. Insert the 5/8" Straight Coupler into the engine side of the Oil Cooler Hose as shown in Figure 16. Secure with a #10 Hose Clamp.

2023+ Honda Pioneer 700 Heater

- e. Locate 5/8" 90 Degree Elbow. Insert the 5/8" 90 Degree Elbow into the other side of the Oil Cooler Hose and secure with a #10 Hose Clamp.
- f. Connect the two 5/8" Heater Hoses to the 5/8" Ports. Either hose can go on either port. Secure with #10 Hose Clamps.

5. Heater Installation

- a. Locate the Main Heater Bracket and the two #6x12mm Serrated Flange Bolts. Attach the Heater Bracket to the Heater unit such that the copper ports are on the right hand side of the bracket as shown in Figure 17.
- b. With the Heater and Bracket still mobile, attach the 3" Duct Hose to the air intake on the side of the heater as shown in Figure 18. Use the remaining 15" Zip to secure it.
- c. Attach the 2" Duct Hoses to the 50mm Ports on the Heater as shown in Figure 18. Secure with zip ties.
- d. Install the 5/8" Heater Hoses to the Copper Ports (**Be Sure to remove the Black Shipping Plugs if present**). Secure with #10 Hose Clamps
- e. Attach the 4-pin Heater Connector to the remaining connect on the Heater Wiring Harness.
- f. Position the heater between the Passenger Side plastic hood and Power Steering Motor as shown in Figure 19. Use a 1/8" Drill bit to pilot the hole centers. Then use the 1/4" Self Tapping Serrated Flange Screws to secure the Heater.

6. Test Heater

- a. Refill the reservoir at the front of the vehicle using manufacturer approved coolant. Open the radiator cap and fill the radiator completely. Start the vehicle and let it run at idle, filling the radiator as necessary.
- b. After the coolant level in the radiator has remained constant for 20-30 seconds, replace the radiator cap securely. Run the vehicle at a fast idle, being mindful of the vehicle temperature. If the vehicle temperature gauge exceeds one or two "bars" above the middle line, turn the vehicle off and let it cool down completely. Once completely cool, open the radiator cap and fill coolant as needed. Repeat steps until vehicle is able to regulate its temperature using the radiator fan.
- c. Run the vehicle at a fast idle until the radiator fan turns on, this is considered one thermal cycle of the vehicle.
- d. Turn the vehicle off, let it cool completely. After complete cool down, refill the coolant reservoir and radiator as needed.
- e. Repeat test procedure, checking for leaks periodically and refilling coolant as needed until coolant level remains the same after a full thermal cycle and the heater puts out good heat.

7. Finishing Touches

- a. Use the remaining zip ties to secure all wires, duct hoses and Heater Hoses away from sharp, hot or moving parts.
- b. Replace all removed parts.
- c. Over the next several rides, monitor the coolant level and coolant temperature to ensure there are no leaks. When the vehicle is completely cool, check the Radiator fill level to ensure it is properly topped off.

2023+ Honda Pioneer 700 Heater

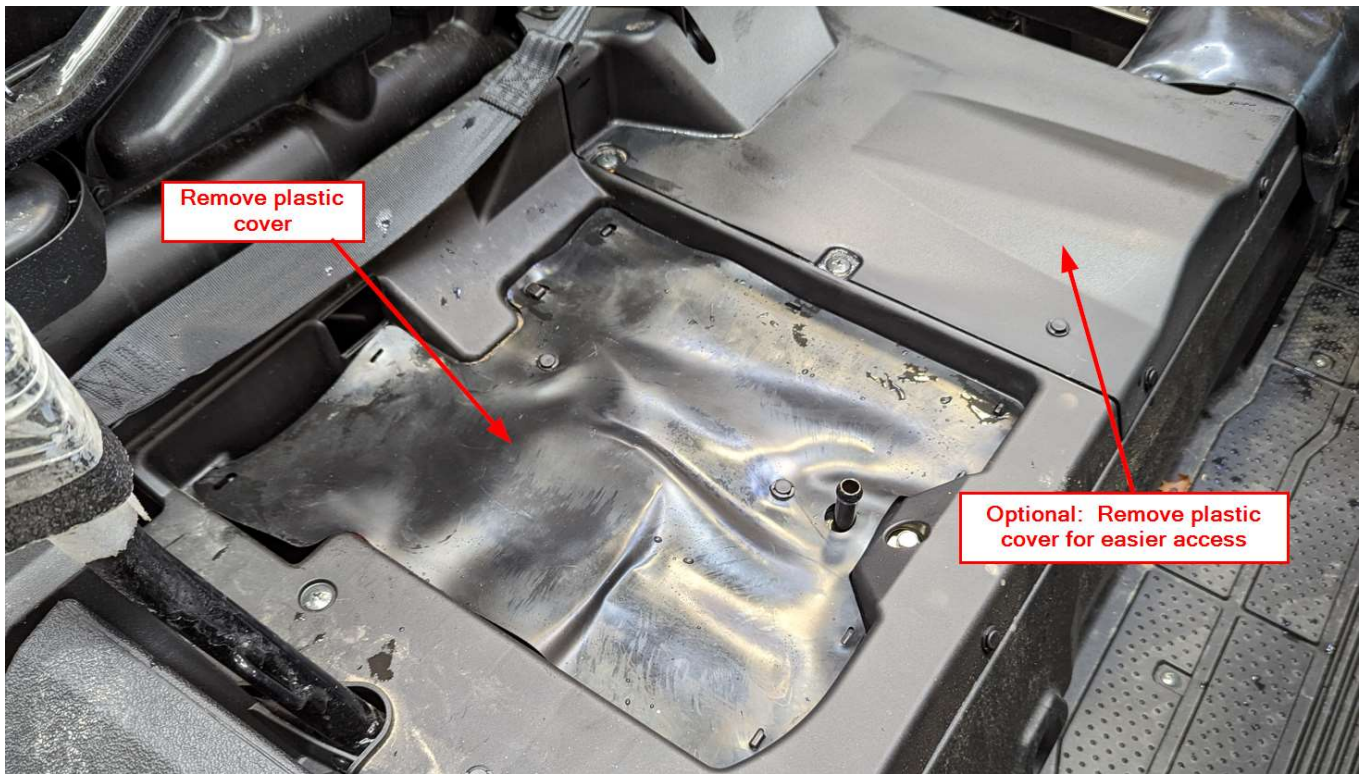


Figure 1



Figure 2

2023+ Honda Pioneer 700 Heater

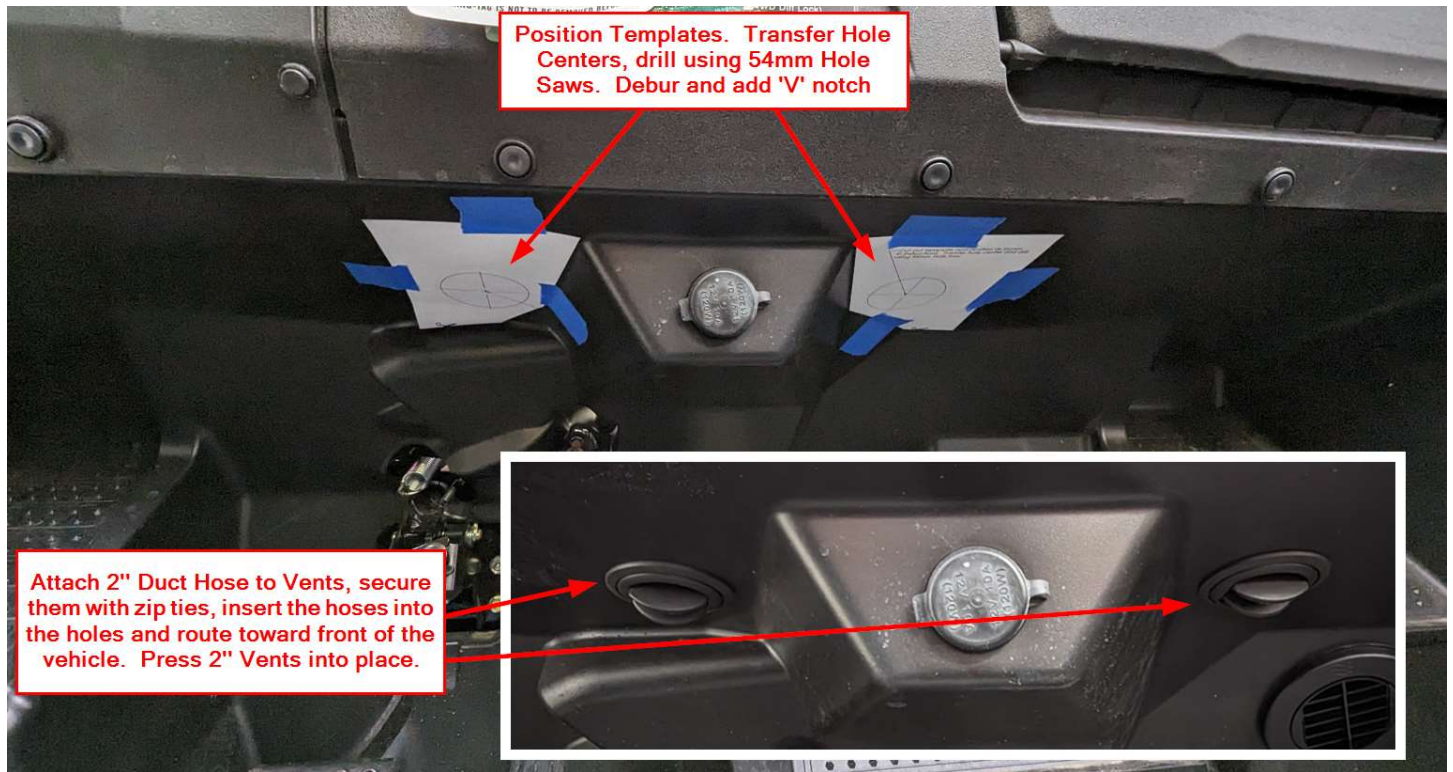


Figure 3

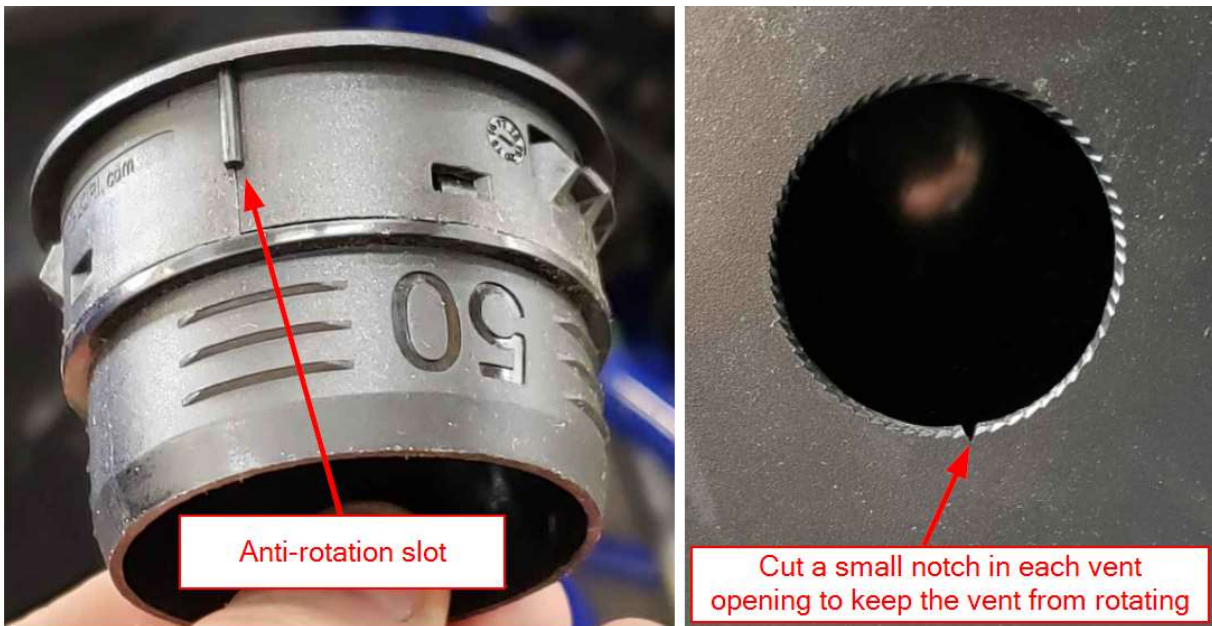


Figure 4

2023+ Honda Pioneer 700 Heater



Figure 5

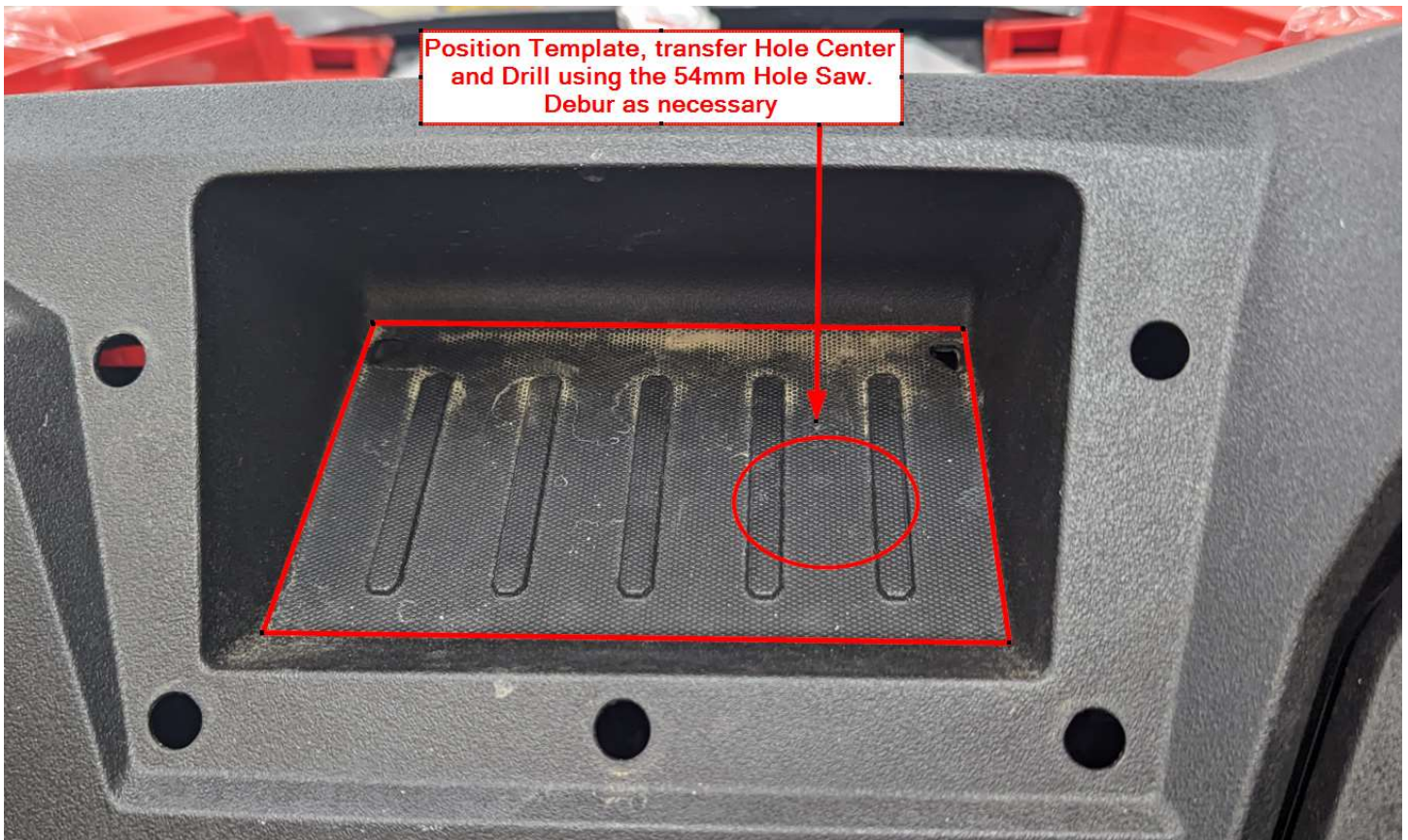


Figure 6

2023+ Honda Pioneer 700 Heater

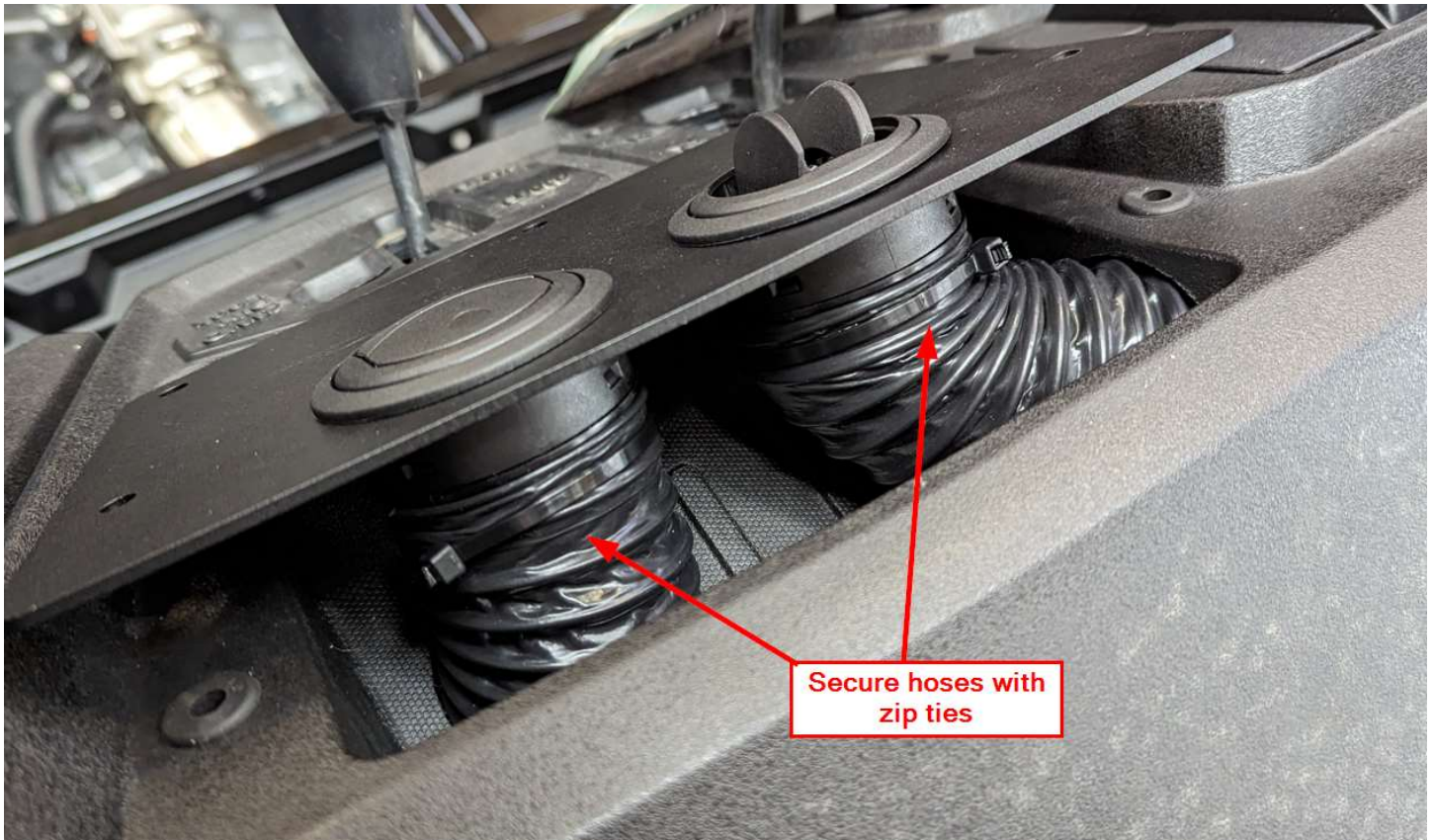


Figure 7

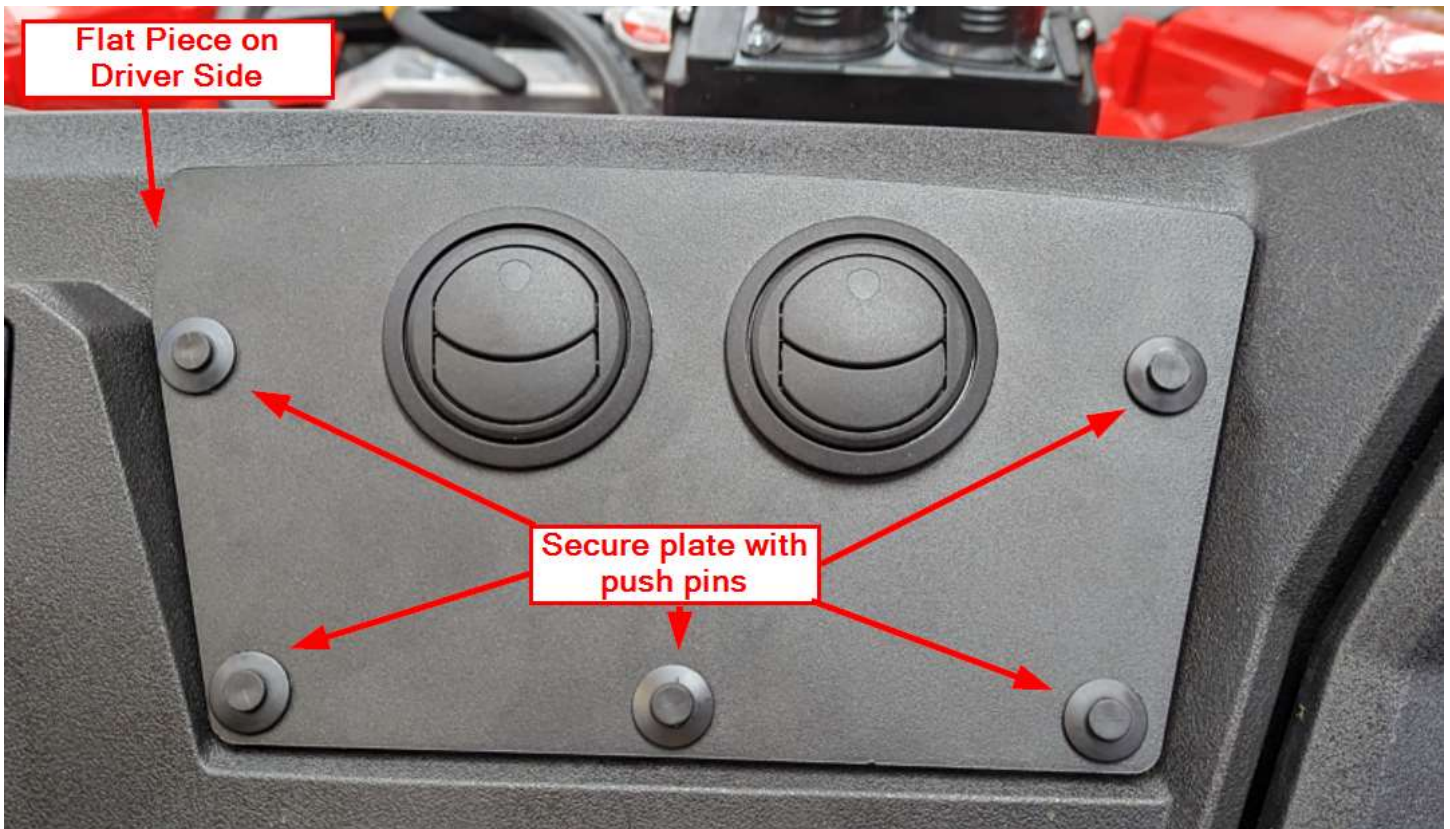


Figure 8

2023+ Honda Pioneer 700 Heater

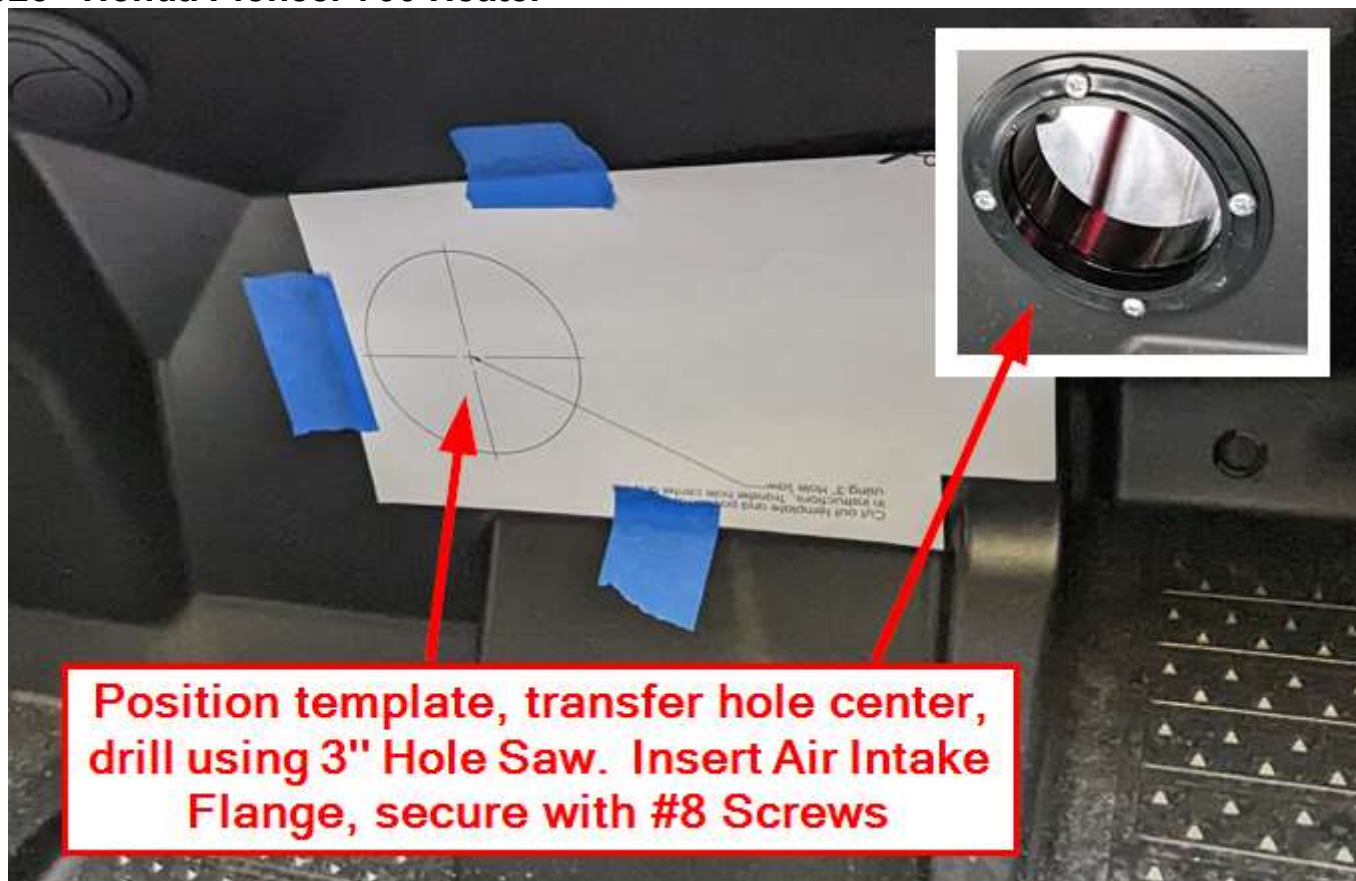


Figure 9



Figure 10

2023+ Honda Pioneer 700 Heater

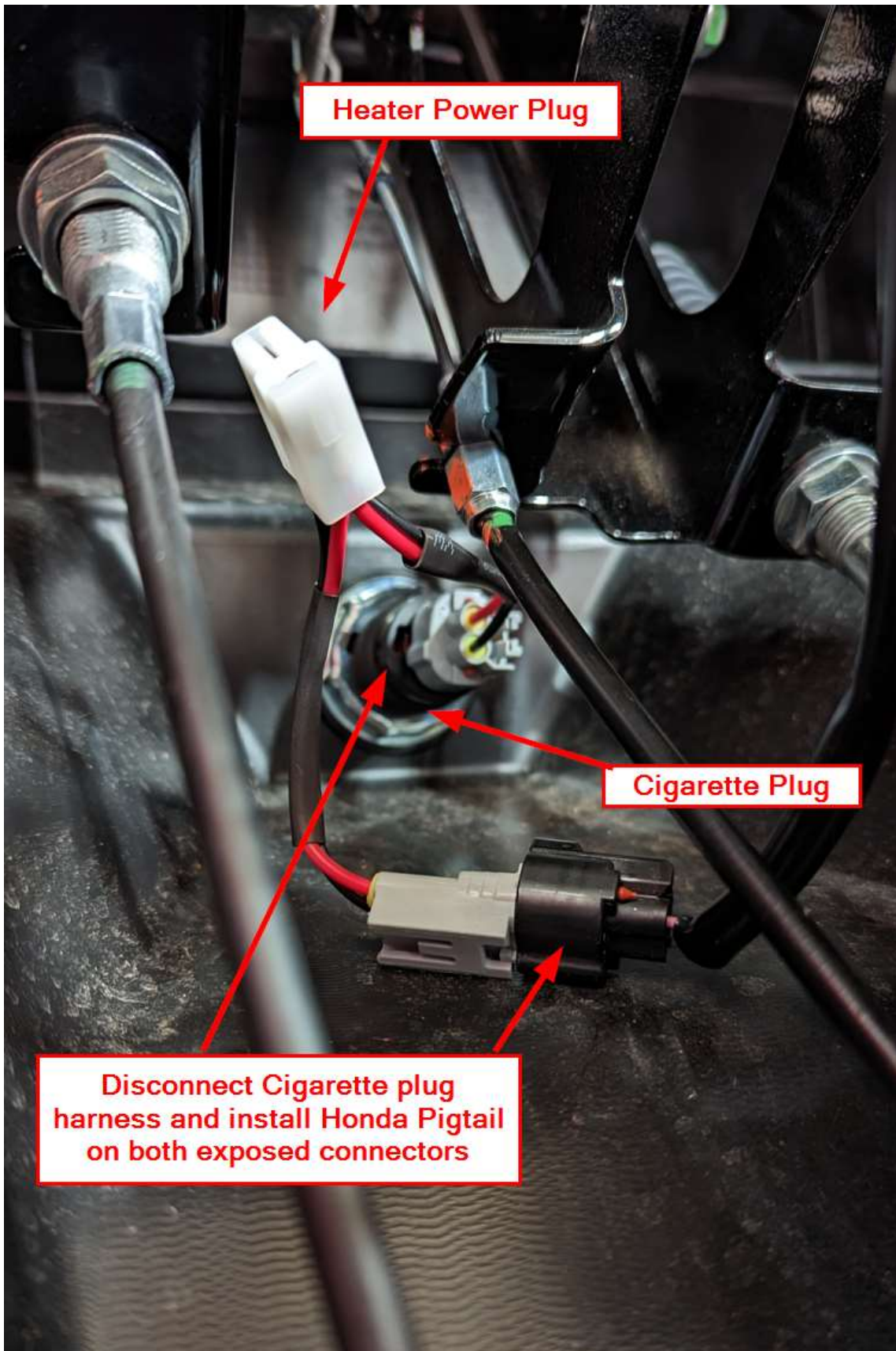


Figure 11

2023+ Honda Pioneer 700 Heater



Figure 12

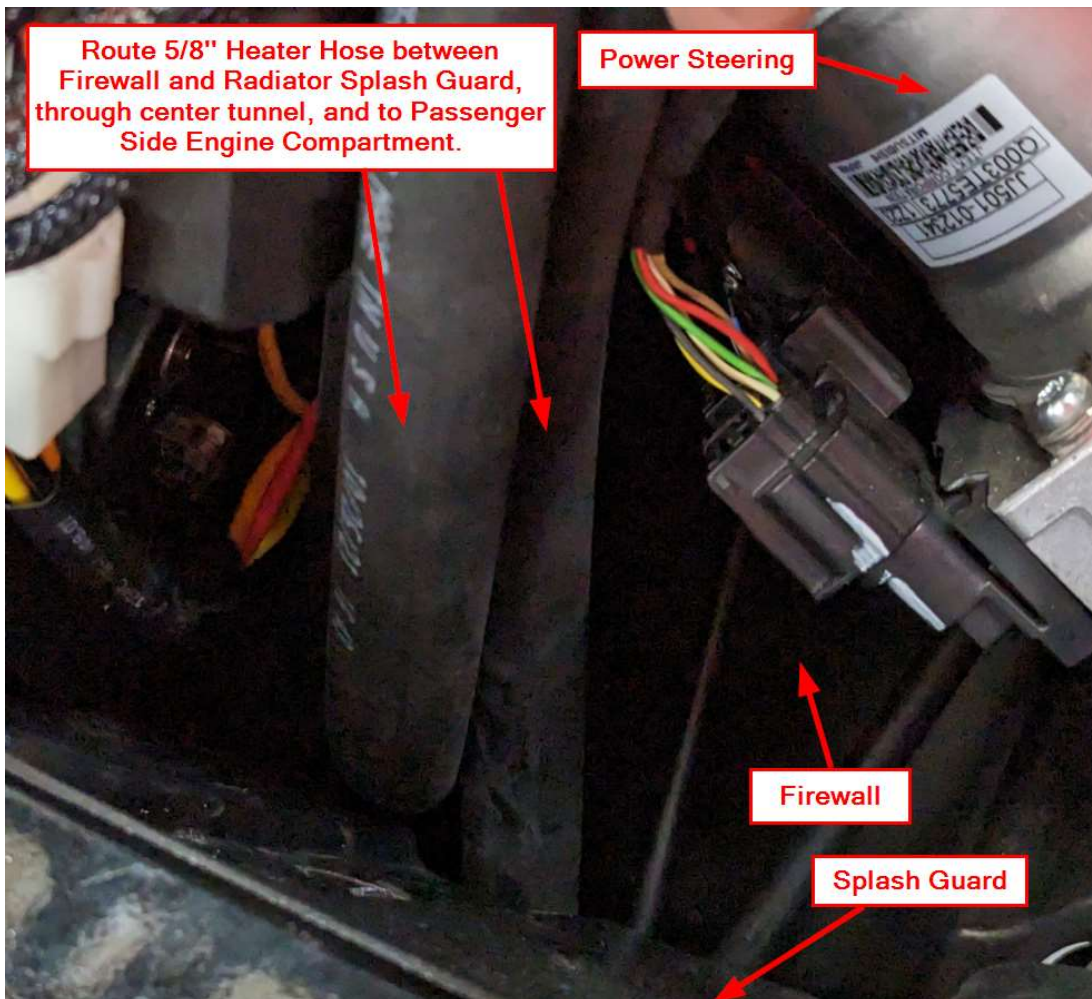


Figure 13

2023+ Honda Pioneer 700 Heater

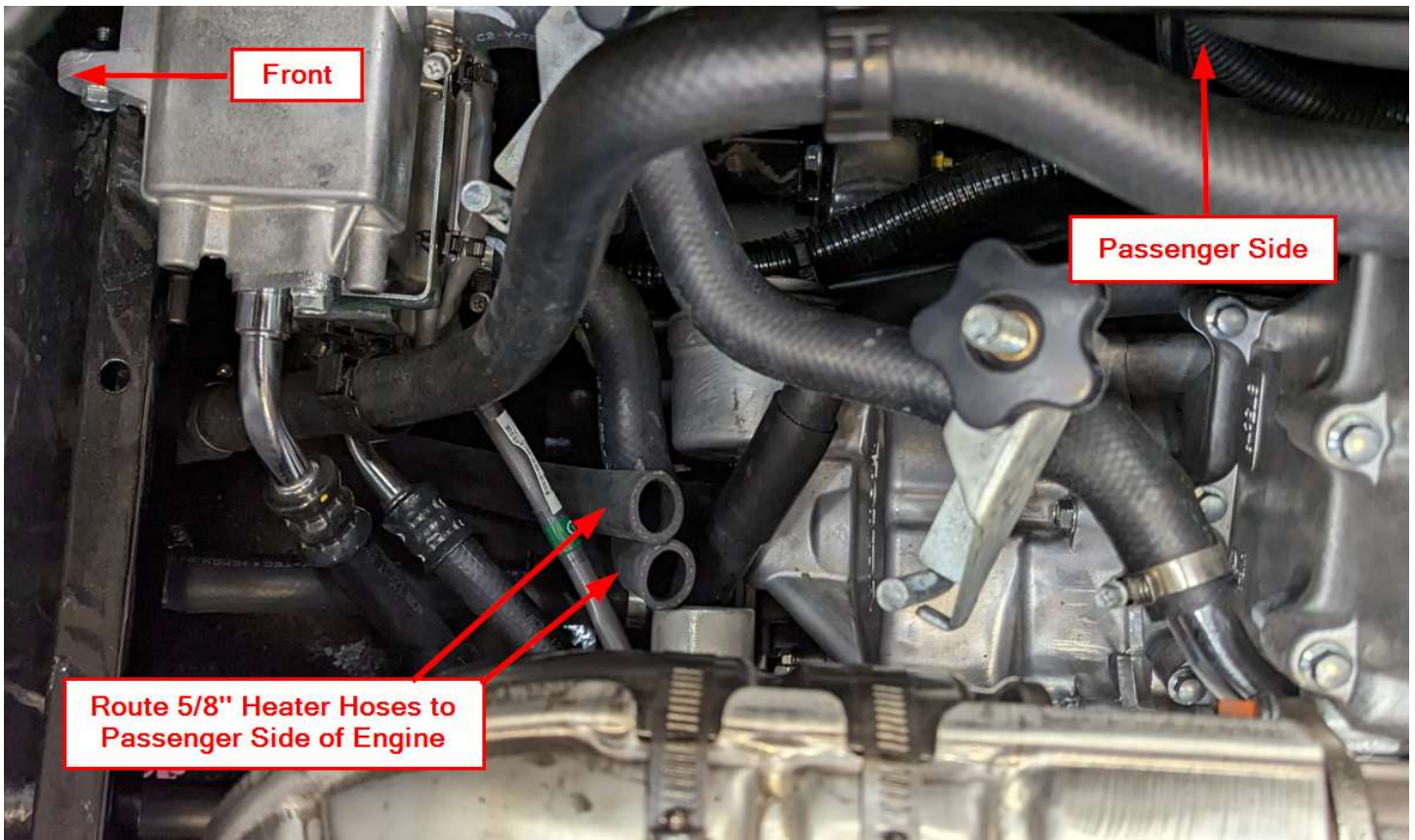


Figure 14

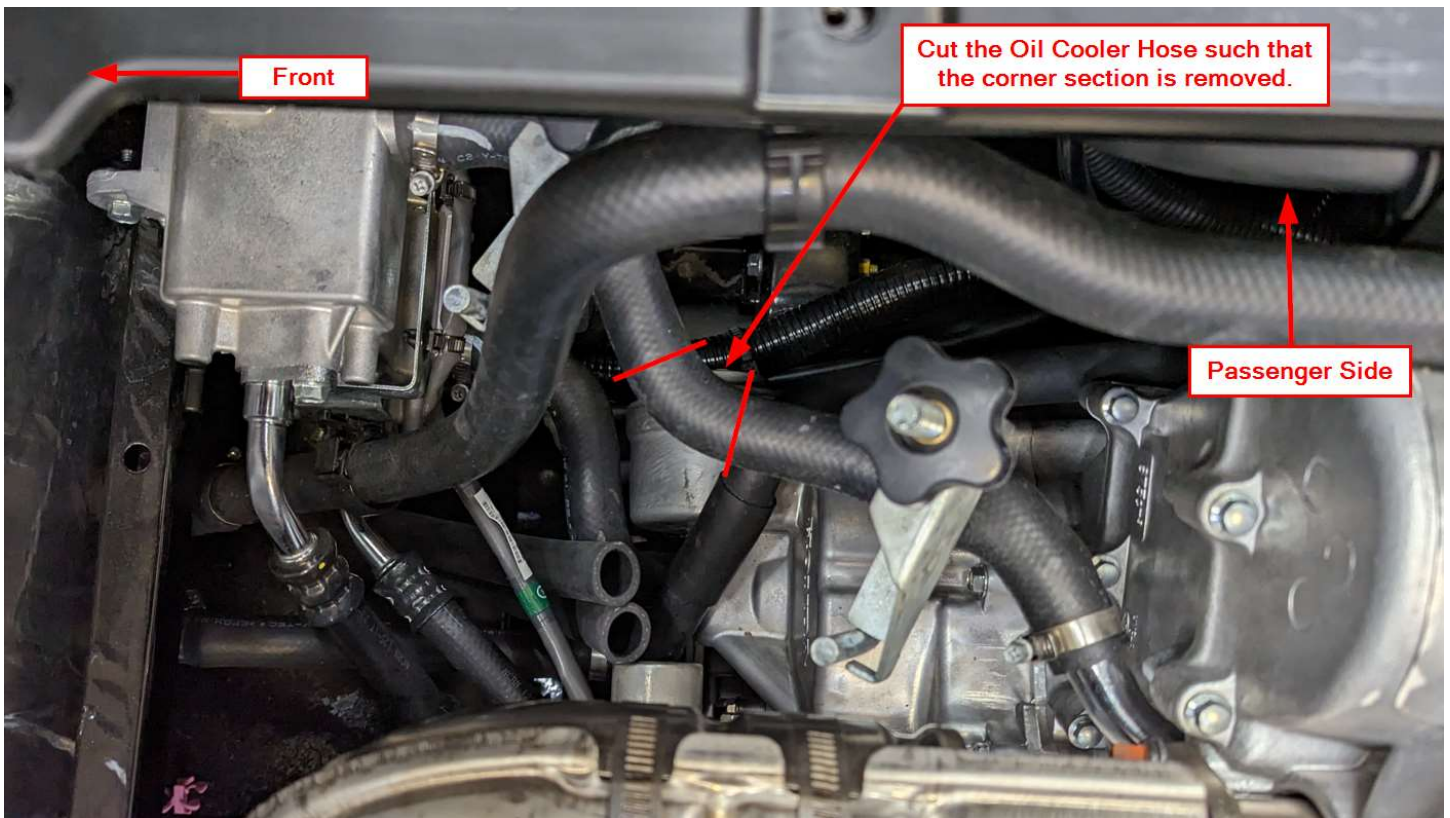


Figure 15

2023+ Honda Pioneer 700 Heater

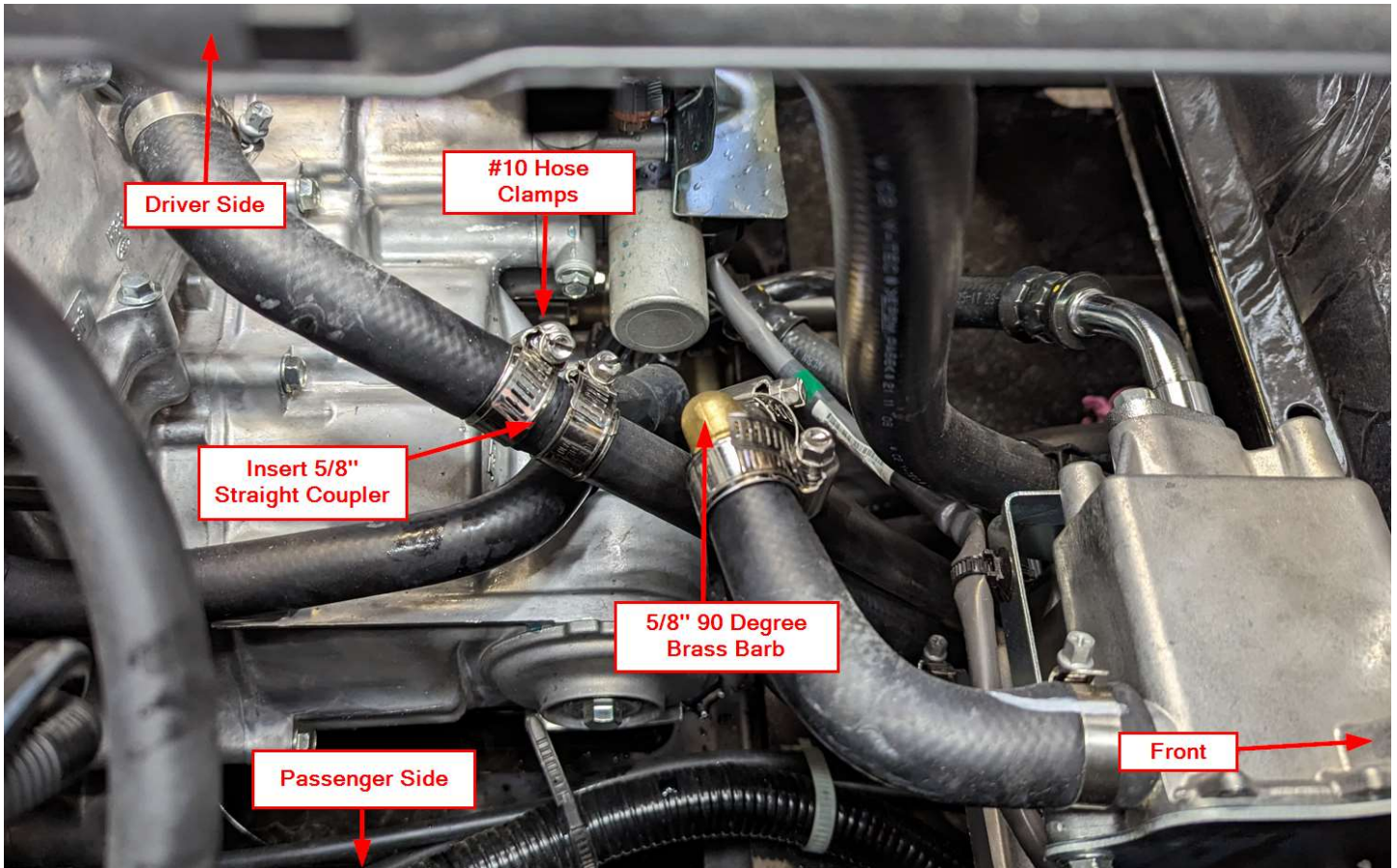


Figure 16

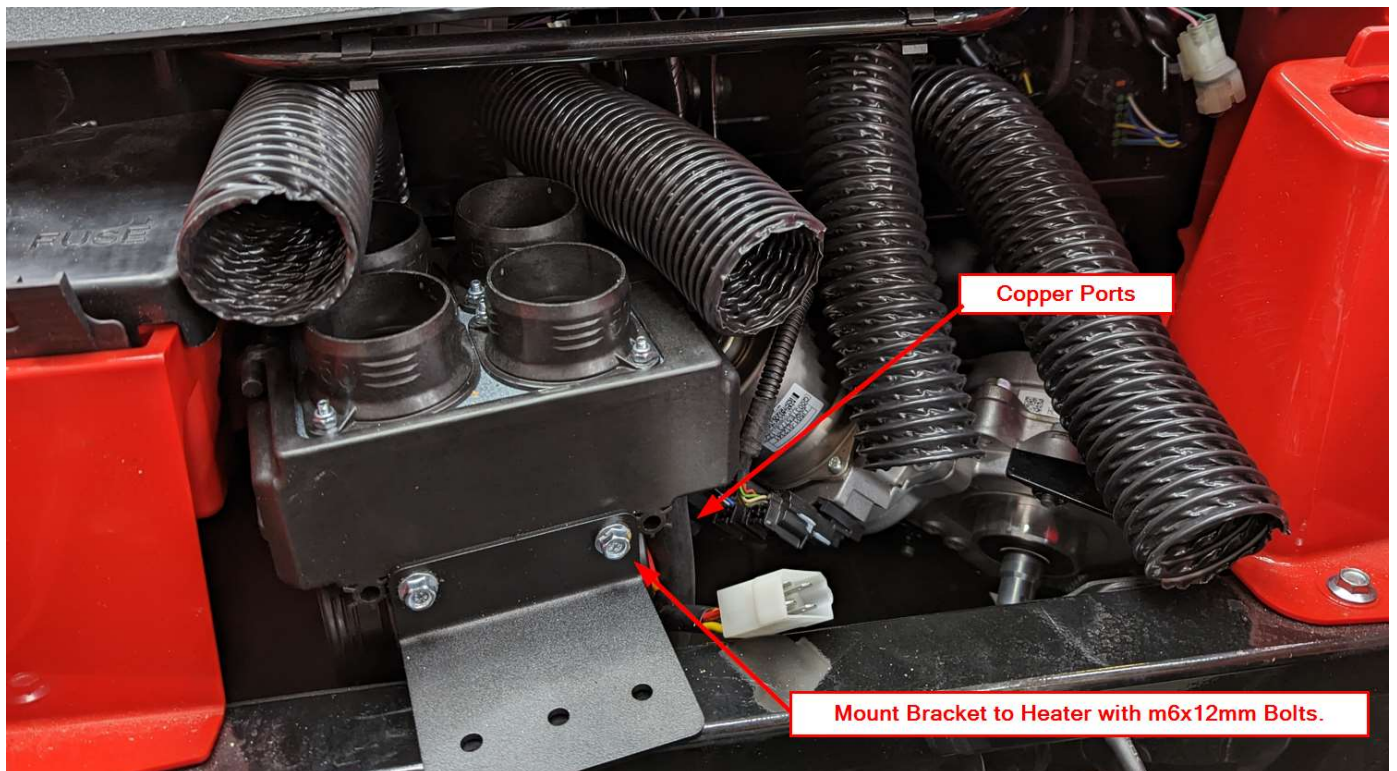


Figure 17

2023+ Honda Pioneer 700 Heater

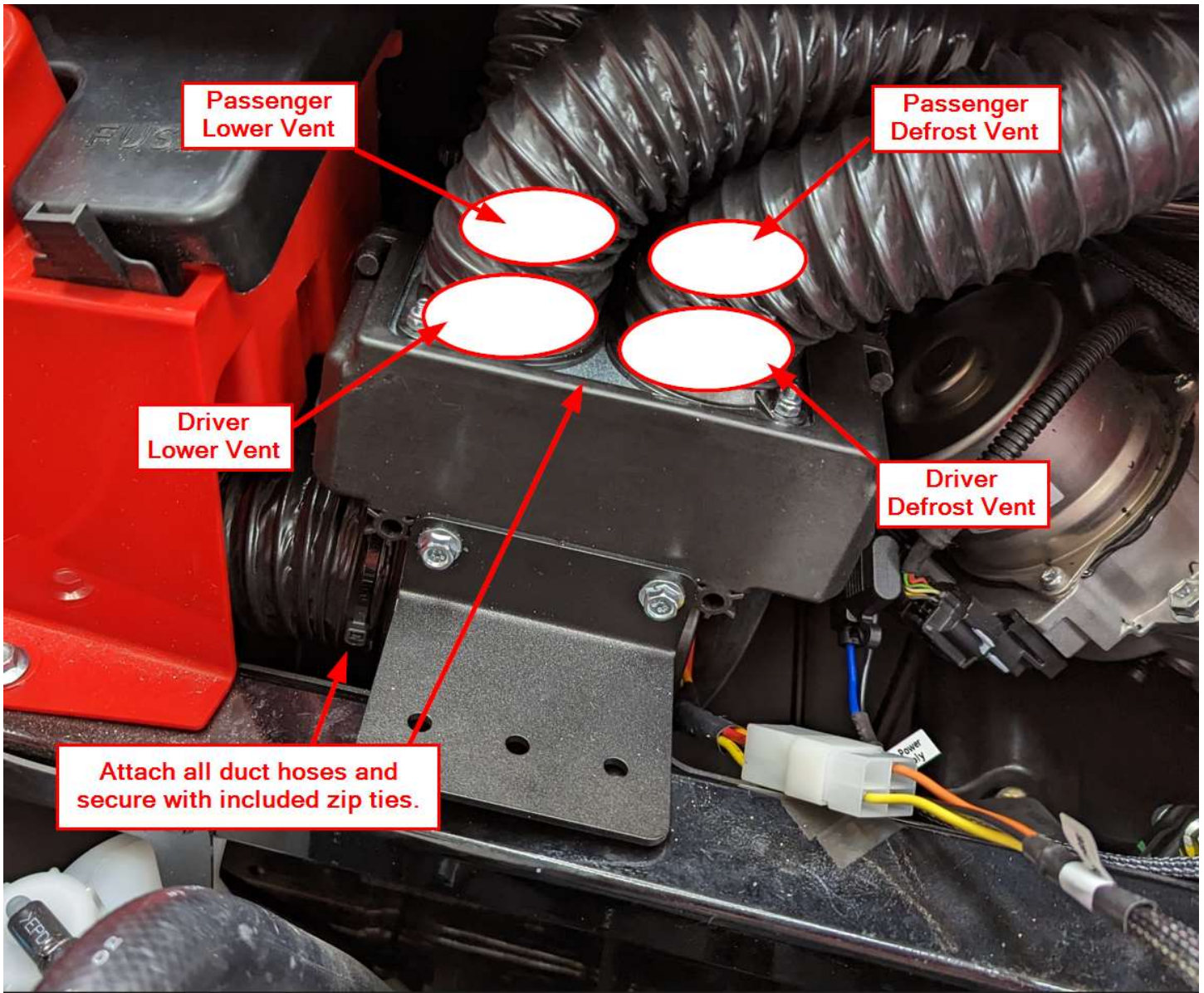


Figure 18

2023+ Honda Pioneer 700 Heater

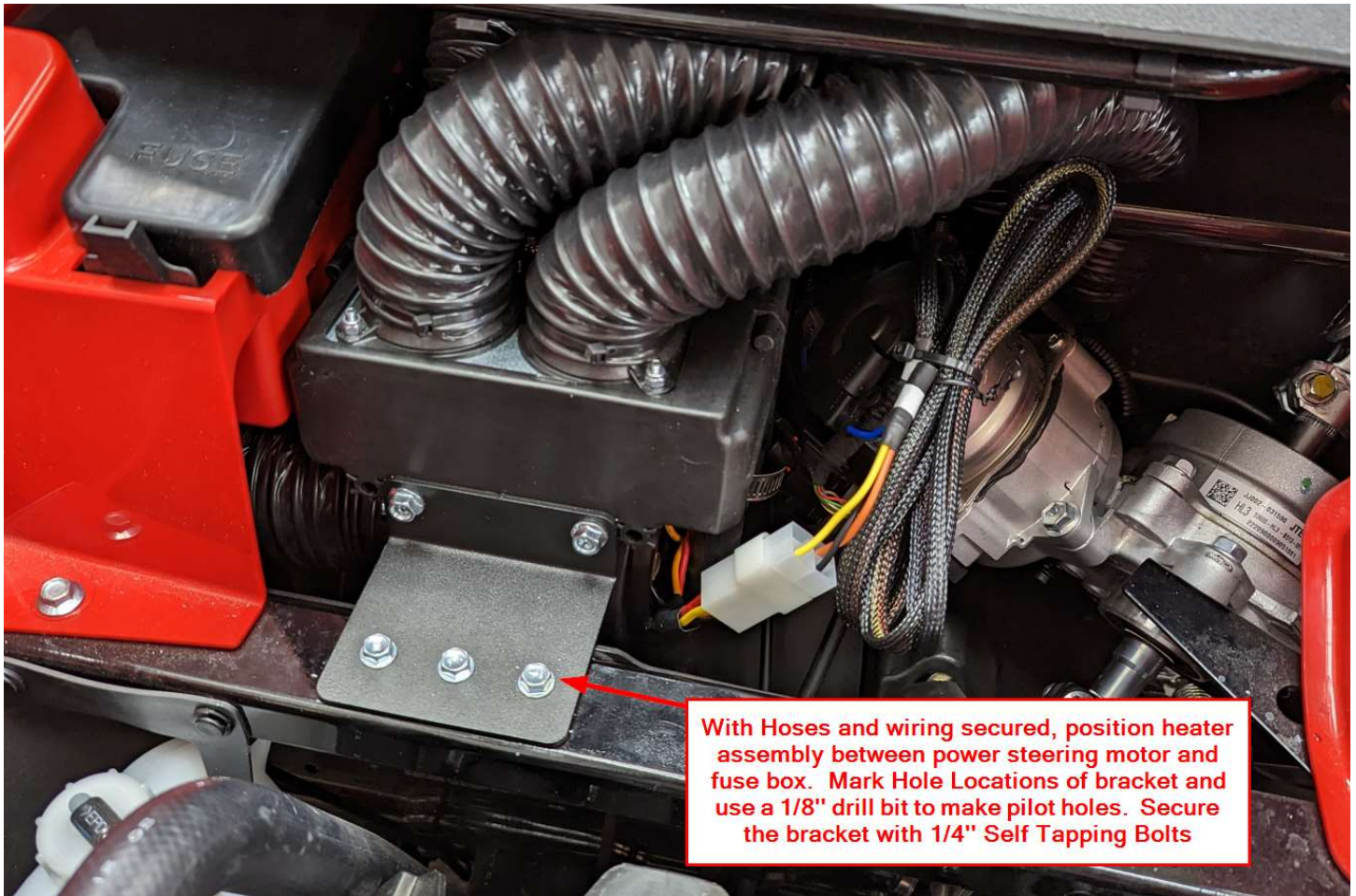


Figure 19

2023+ Honda Pioneer 700 Heater

HEATER WARRANTY – icecrusherheaters.com and coupersproducts.com

***Coutersproducts.com/Icecrusherheaters.com Heater Warranty. 3 Year/36 Month Limited Warranty**

Ice Crusher Heaters warrants your Ice Crusher UTV Heater System to be free from defects in material and craftsmanship under normal use and service by the original consumer purchaser (end user) for a period of Three (3) year from the date of purchase on all components including electrical components. The warranty is null and void if the system has been damaged by accident, improper installation, unreasonable use, lack of proper maintenance, unauthorized repairs or modifications, or causes not arising from defects in materials and craftsmanship.

Ice Crusher Heaters obligation under this warranty are limited to repair of the product at Ice Crusher Heaters production facility, or the replacement of the product at Ice Crusher Heaters option and at Ice Crusher Heaters expense. Any expense involved *in the removal, reinstallation, or transportation of the product is **not** covered by this warranty.* Prior to return of any product to Ice Crusher Heaters, customer must contact Ice Crusher Heaters customer service, (888)-964-0135, info@utvheaters.com, and obtain a Return Authorization Number. This number must be marked on exterior of carton for easy identification. Warranty product received at Ice Crusher Heaters without a Return Authorization Number may be returned at expense of sender.

Postage must be prepaid, and the original dated proof-of-purchase must be confirmed or provided. Ice Crusher Heaters will not be liable for any damages sustained in transport due to improper packaging or handling. The acceptance by UTV HEATER WARRANTY – utvheaters.com and coupersproducts.com

This warranty is Couper's Products only express warranty of this product. We reserve the right to make changes to products and policy that are in the best interest of Couper's Products. No implied warranty shall extend beyond One (1) or Three (3) year period from the date of the original consumer (end user) purchase. Couper's Products will not be liable for any damages, for loss of use of this product, nor for any consequential damages, costs or expenses.

Some states do not allow limitations on how long an implied warranty lasts or the exclusion of incidental or consequential damages, so the above limitations and exclusions may not apply to you. This warranty gives you specific legal rights and you may also have other rights not mentioned here that vary from state to state.

After receiving a Return Authorization Number send defective product to:

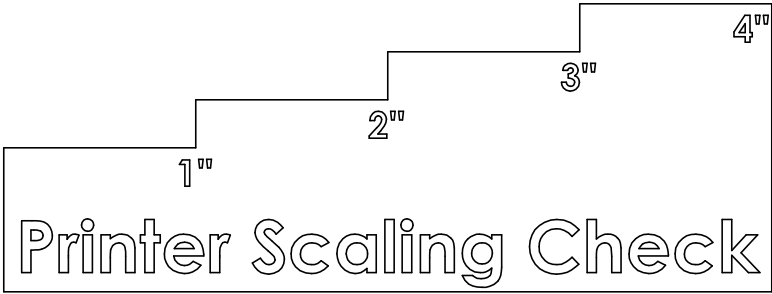
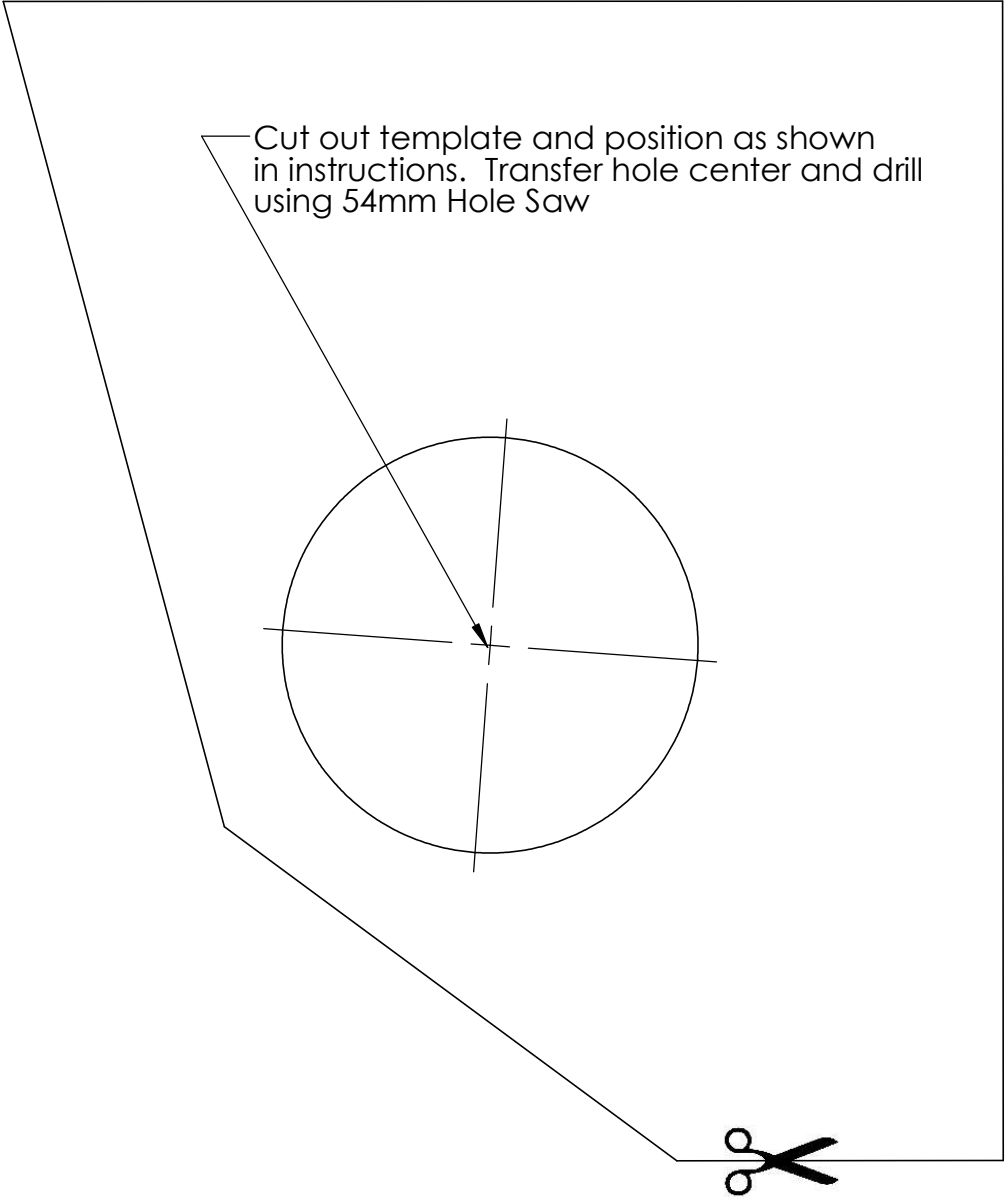
Ice Crusher Heaters

Attn: Warranty

23001 Industrial Blvd

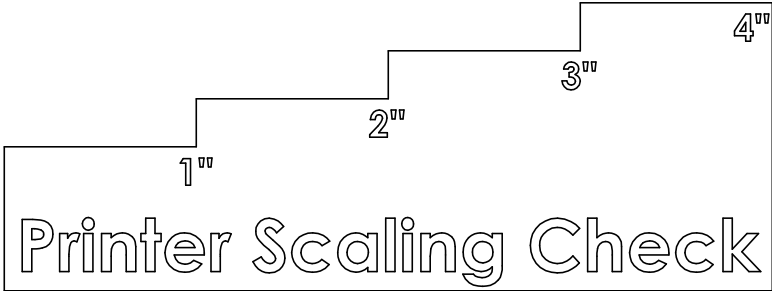
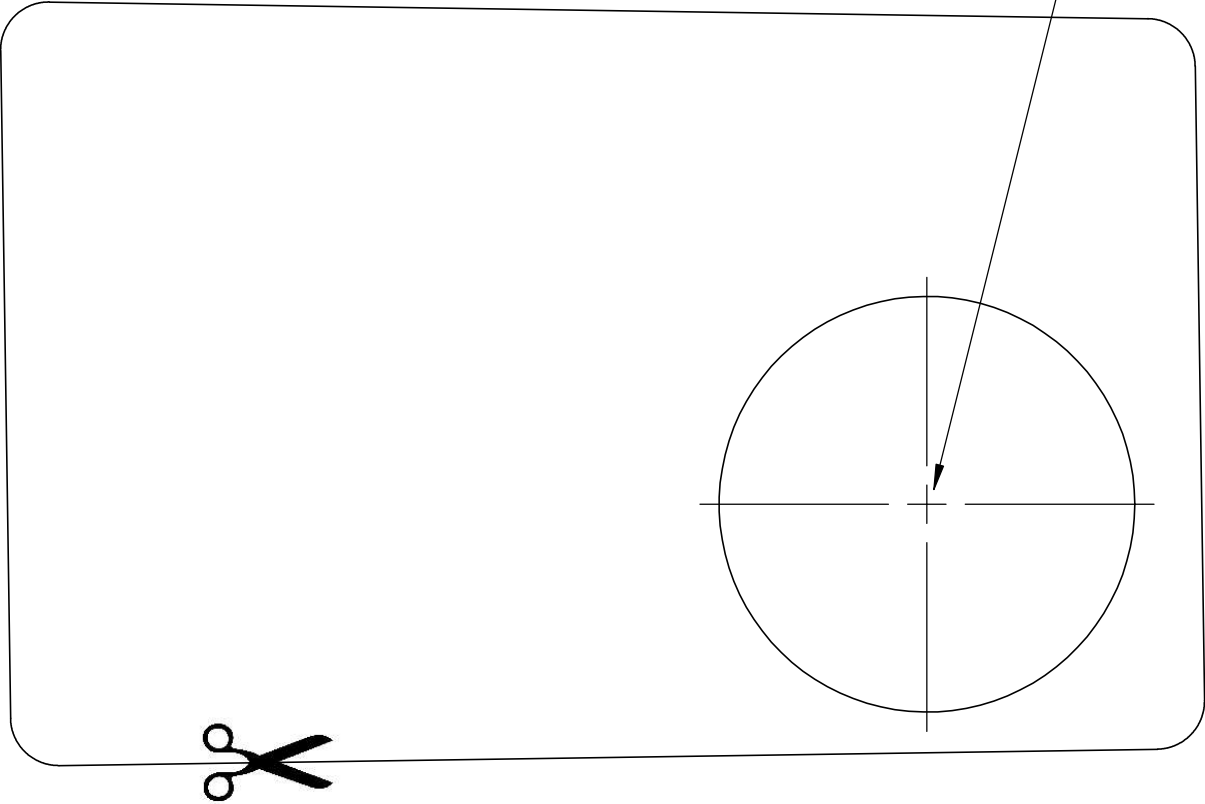
Rogers, Minnesota, 55374

Passenger Side Lower Vent Template

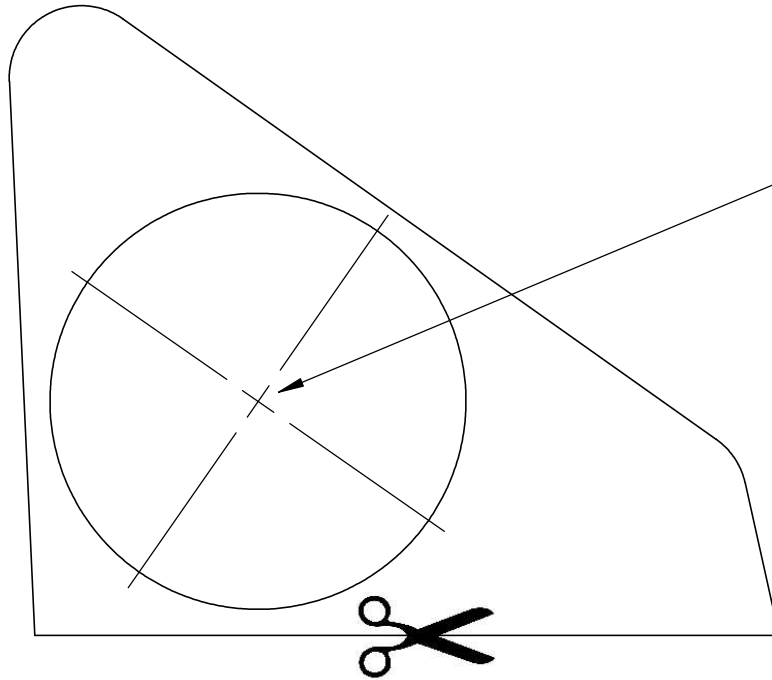


Passenger Side Defrost Vent Template

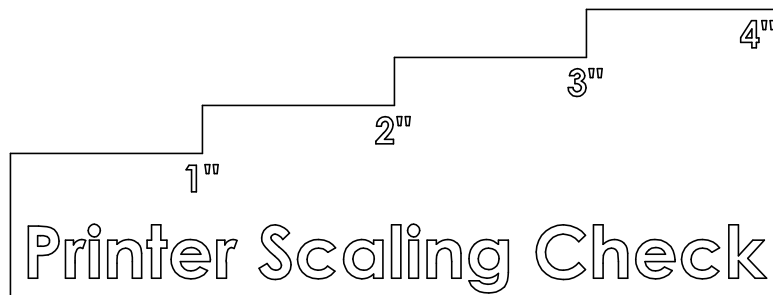
Cut out template and position as shown in instructions. Transfer hole center and drill using 1/8" Drill Bit and then follow it up with 54mm Hole Saw.



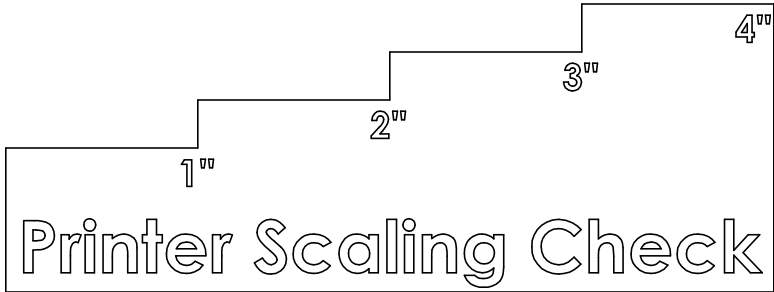
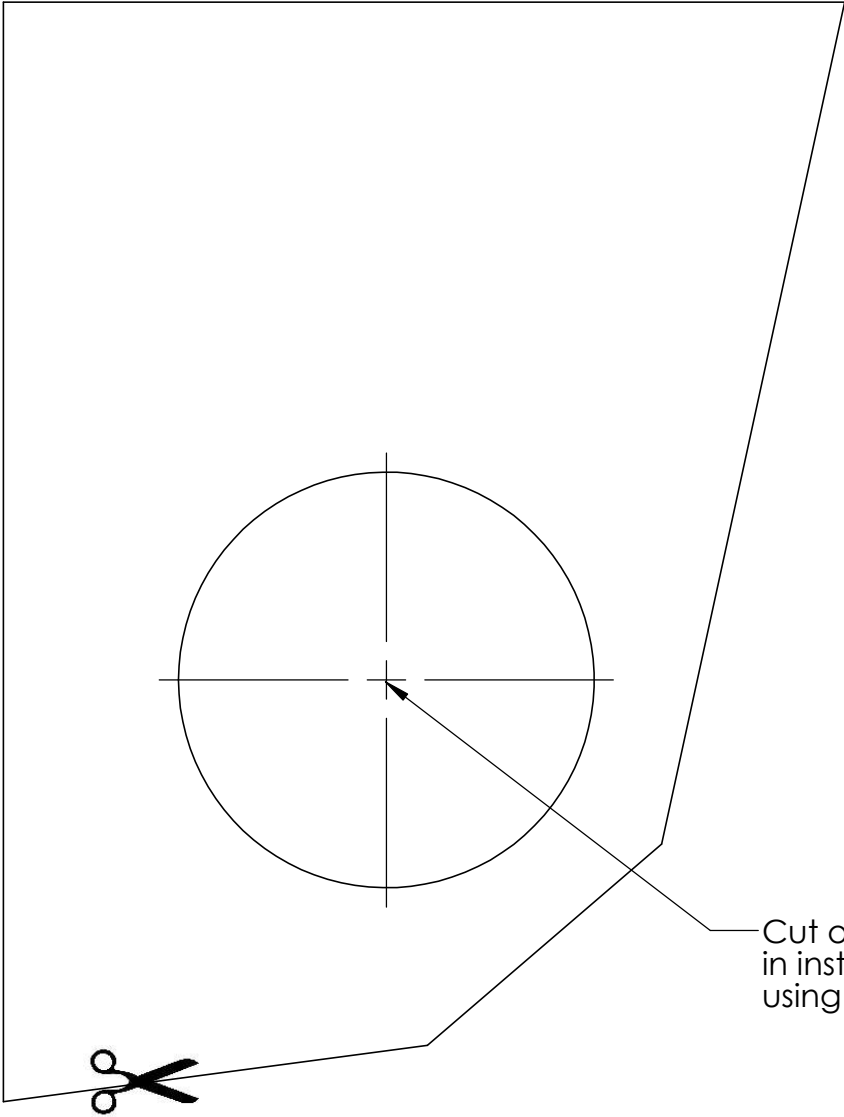
Driver Side Defrost Vent Template



Cut out template and position as shown in instructions. Transfer hole center and drill using 1/8" Drill Bit for Pilot Hole and then 54mm Hole Saw



Driver Side Lower Vent Template



Cut out template and position as shown in instructions. Transfer hole center and drill using 54mm Hole Saw

Warm Air Intake Template

Cut out template and position as shown in instructions. Transfer hole center and drill using 3" Hole Saw

