

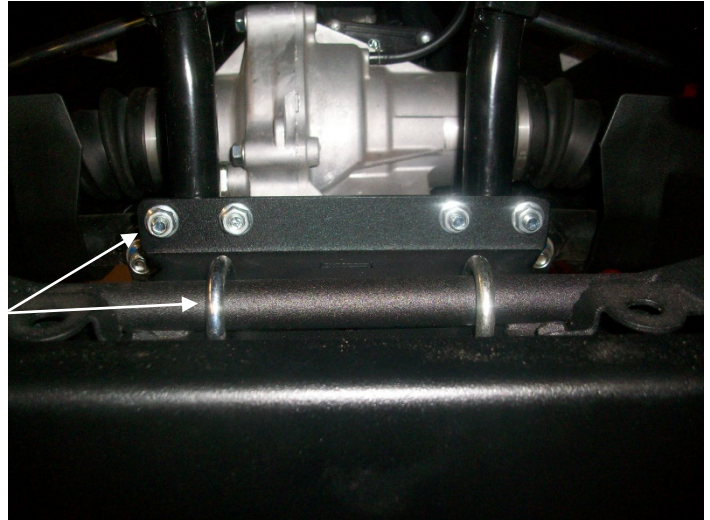


**RM5 PLOW MOUNT INSTRUCTIONS**  
**YAMAHA KODIAK / GRIZZLY**  
**PART# 4501-0856**

ITEM	PART#	QTY.	DESCRIPTION
1	4598-70	1	Plow Mount
2	HDW2150	4	5/16 x 1-1/4 x 1-3/4 Rd. U-Bolt
3	HDW7058	10	5/16 Nylock Nut
4	HDW9002	10	5/16 Flat Washer
5	HDW1050	2	8mm x 20mm Hex Bolt
6	HDW2051	2	5/16 x 1 Hex Bolt
7	HDW9427	2	1"OD x .406ID x 1/4" thick sapcer
8	4598-6	1	Fairlead Extension Bracket

**MOOSE WINCH MOUNT IS REQUIRED FOR PROPER FAIRLEAD CLEARANCE.**

Remove the front lower plastic skid plate. Slide plow mount into the front bumper as shown. The round U-bolts in back will go around the vertical frame tubes and the next set of U-bolts will go down over the bumper horizontal cross tube use washer and nylock nuts to secure in place.

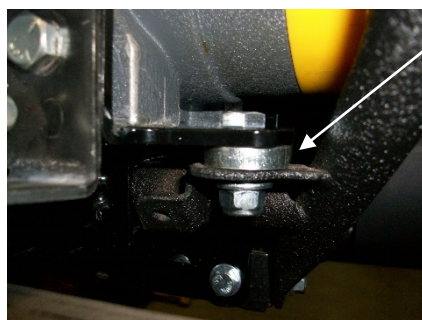


Use the 8mm bolts and washers on the underside of the mount and they will tread into the frame tubes. Tighten securely.



There are spacer provided for under the front location of the winch mount. These are needed for U-bolt clearance.

The fairlead bracket will attach to the winch mount with the 5/16 bolts and nylock nuts



Push tube will mount with the wire loop pins that came with the push tube kit.

Watch on how far you can lift your plow and do not over lift or you may cause severe damage to the unit or machine.

Front plastic may go back on with doing some custom trimming.

