



RM5 PLOW MOUNT INSTRUCTIONS
YAMAHA KODIAK 450
PART# 4501-0863

ITEM	QTY.	PART#	DESCRIPTION
1	1	4599-70	RM5 Plow Mount
2	2	HDW2063	5/16 x 1-1/4 x 2-1/4 U-Bolt
3	2	HDW2154	5/16 x 1-1/4 x 2 U-Bolt
4	8	HDW7058	5/16 Nylock Nut
5	8	HDW9002	5/16 Flat Washer

Remove lower front plastic skid plate.

Attach plow mount to the underside of the machine and the front as shown in pictures.

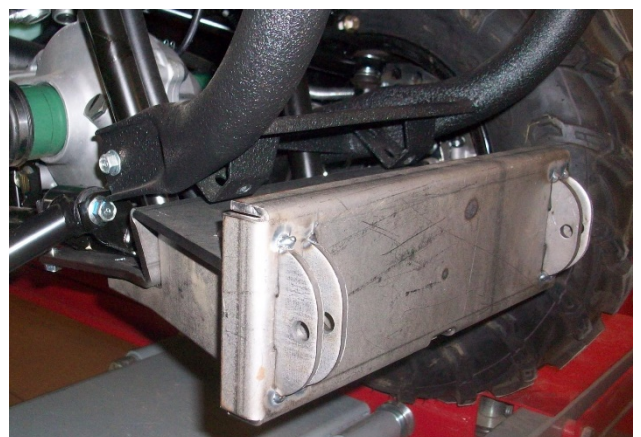
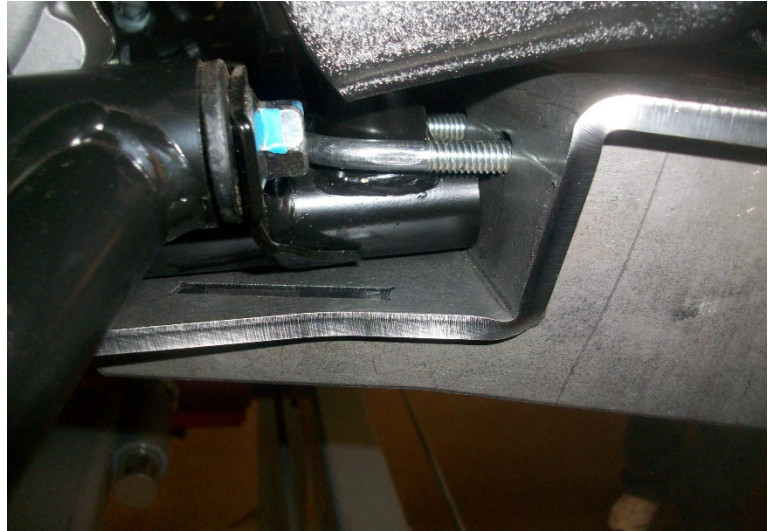
Use the 2" long U-Bolts on the front of the machine going around the frame down tubes and then through the mount. Secure with 5/16 washer and nylock nuts.

Use the 2-1/4" long U-Bolts on the far back part of the mount going over the frame tube and down through the mount plate. Secure with 5/16 washers and nylock nuts.

Tighten all hardware securely.

The push tube will mount up with the wire loop pins supplied with the push tube kit.

Watch on how high you can lift your plow and do not over lift or you may cause severe damage to the unit and or machine.



Questions or Comments Call 320-964-1616
Monday thru Thursday
7:00 to 4:30 CST

INST4599PF