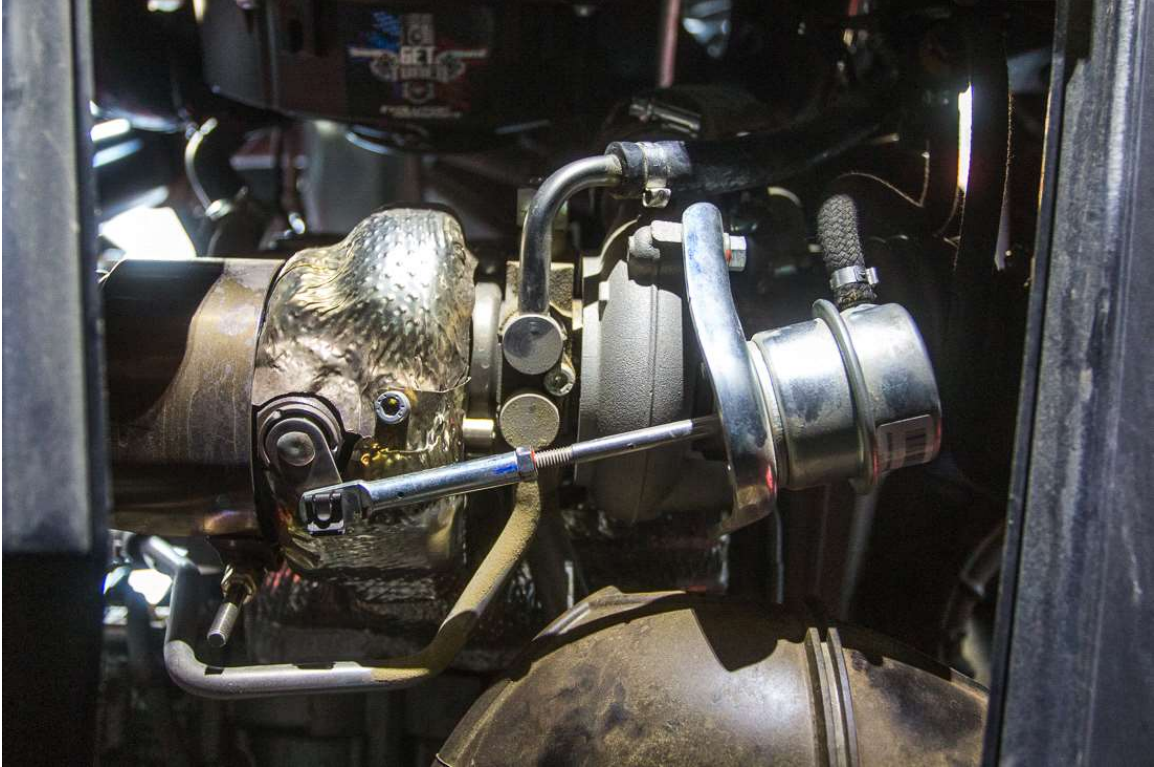


HOW TO INSTALL AGENCY POWER WASTEGATE CAN-AM MAVERICK X3

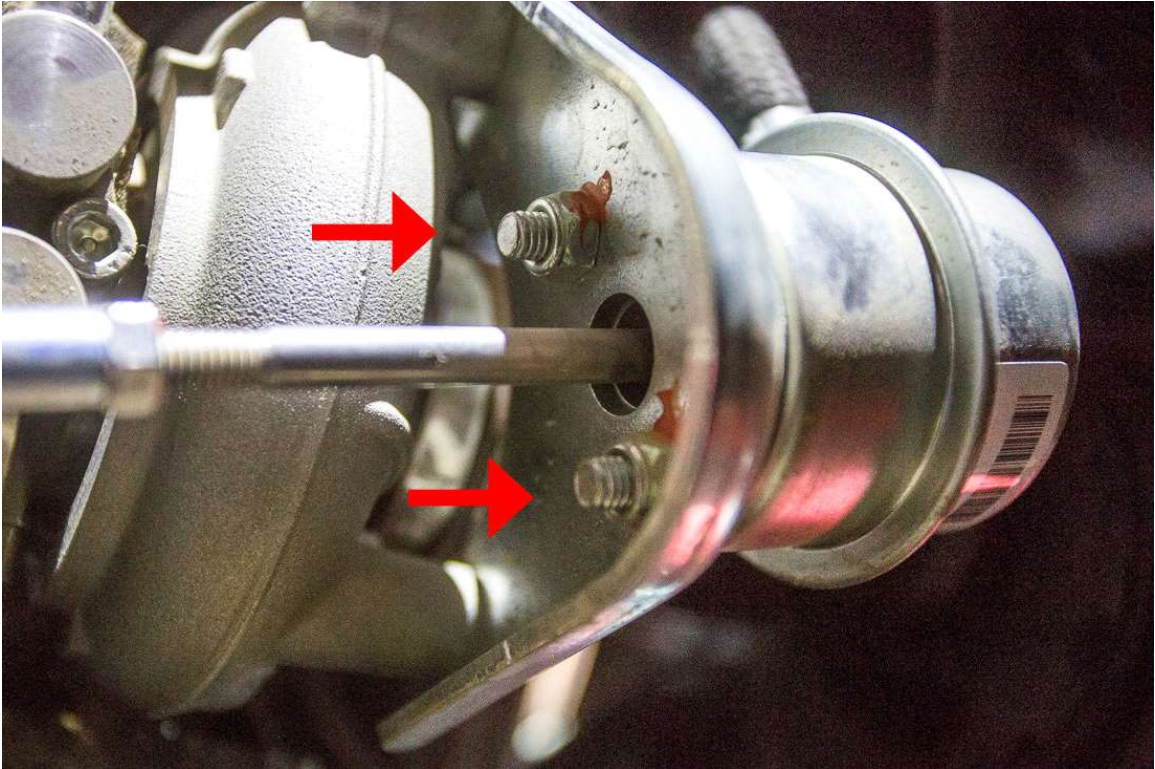
STEP 1 – Access the wastegate by removing the plastic cover located on the back center of the firewall

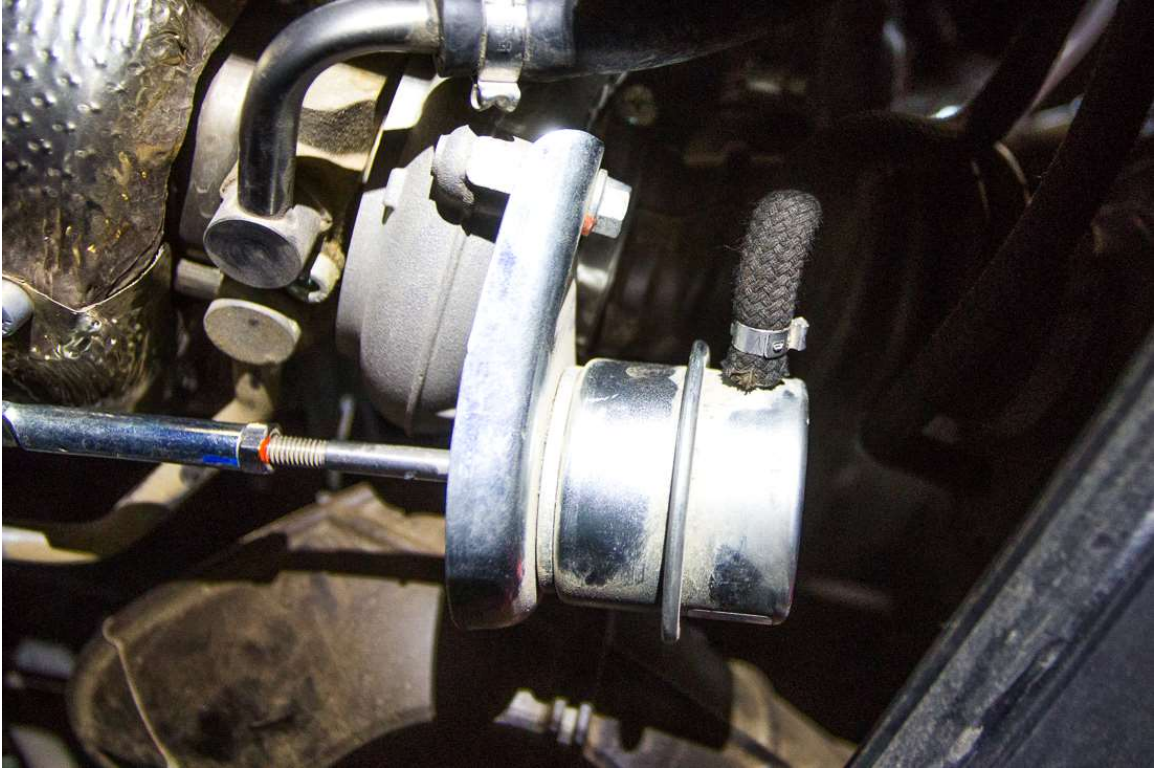






Step 2 – Remove the 10mm nuts holding on the stock wastegate.



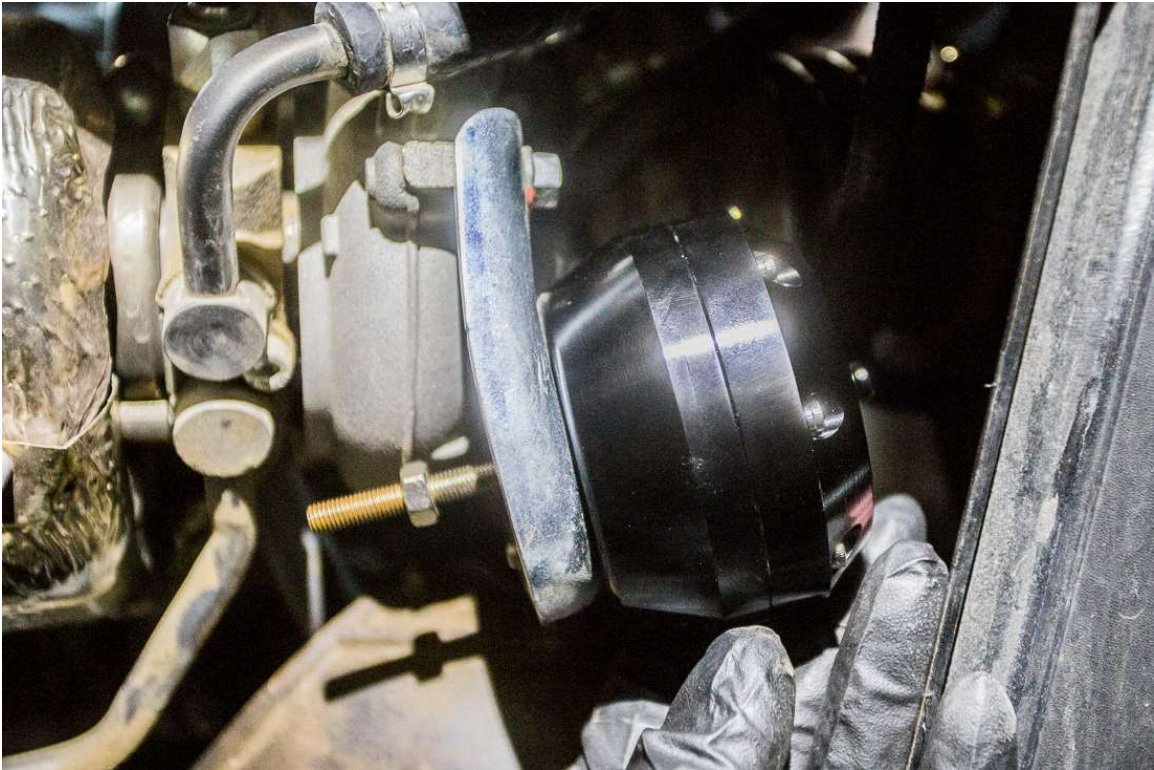






Installing Wastegate





STEP 3 – Install the new Agency Power Wastegate using the supplied 11mm nuts and locking

washers



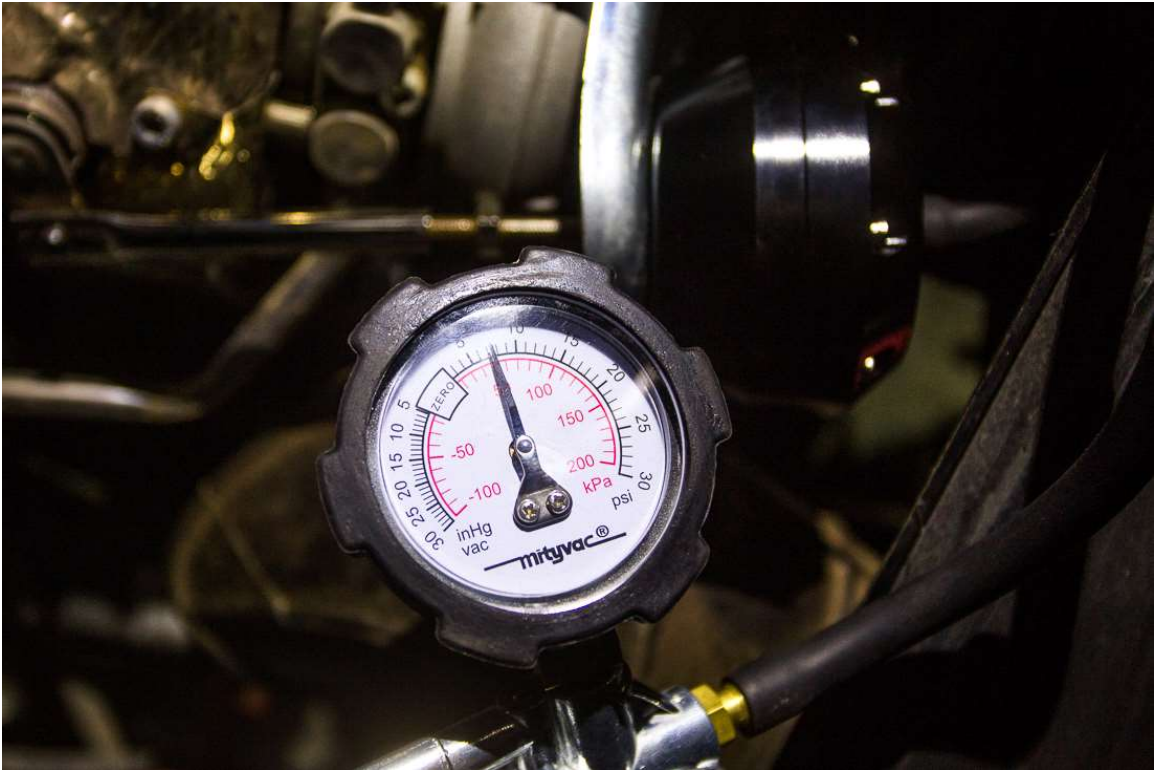


STEP 4 – When installing the wastegate, you need to check the crack pressure. Stock crack pressure on the Can-Am X3 is roughly 7psi. However with this upgraded wastegate, you can set

the crack pressure higher up to 14psi for better performance.

If you do not have a might vac pump like pictured, simply do 1 full turn from neutral. Neutral is right before the wastegate rod moves in or out.









FINISHED – Congratulation on installing the Agency Power Wastegate for the Can-Am Maverick X3

