

CAN-AM X3 TURBO INTAKE INSTRUCTIONS

This guide is to help with the installation of the Agency Power Can-Am Maverick X3 Turbo Intake.







STEP 1 – Remove the plastic intake cover, intercooler vent, and engine access cover.





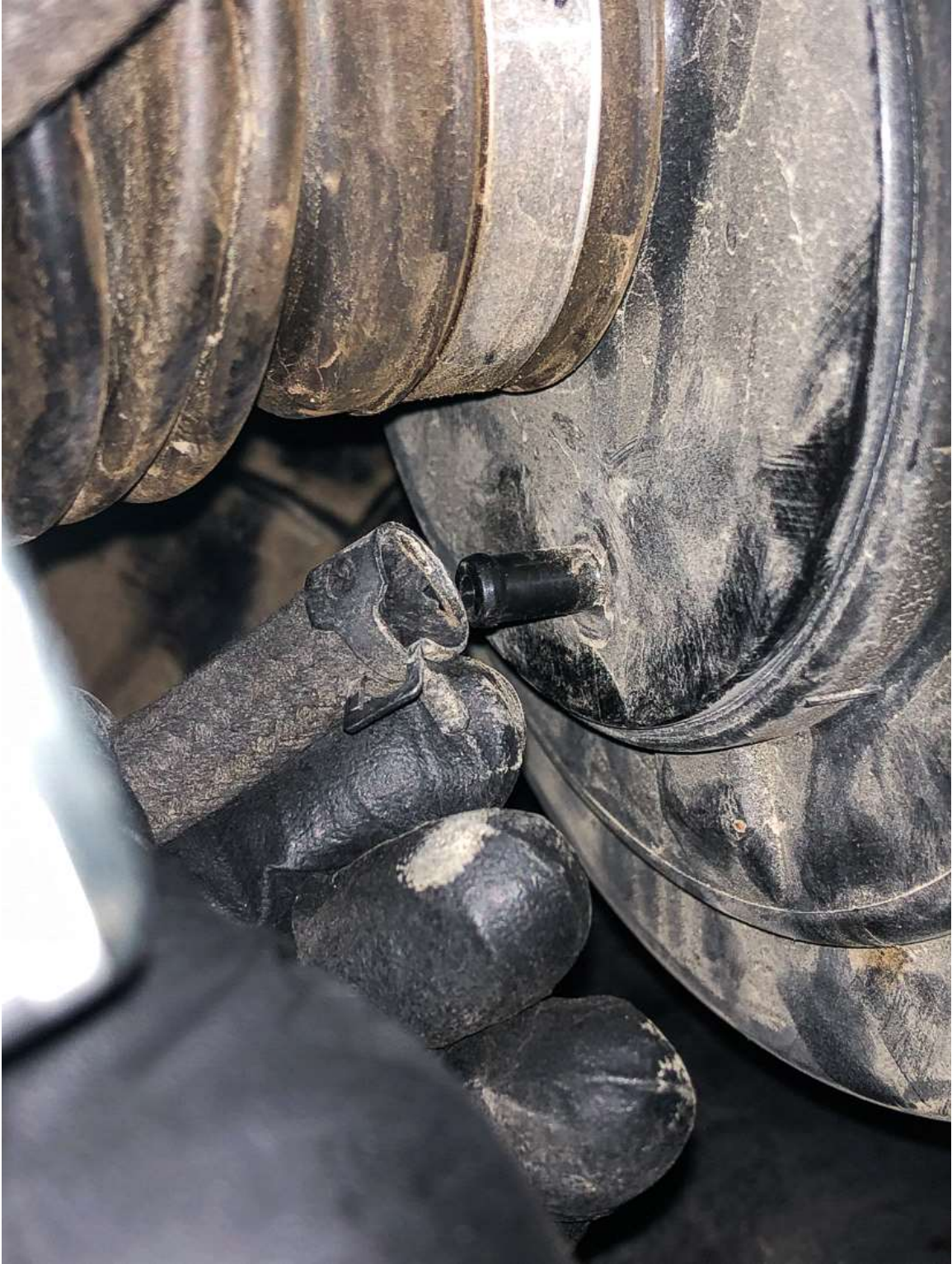




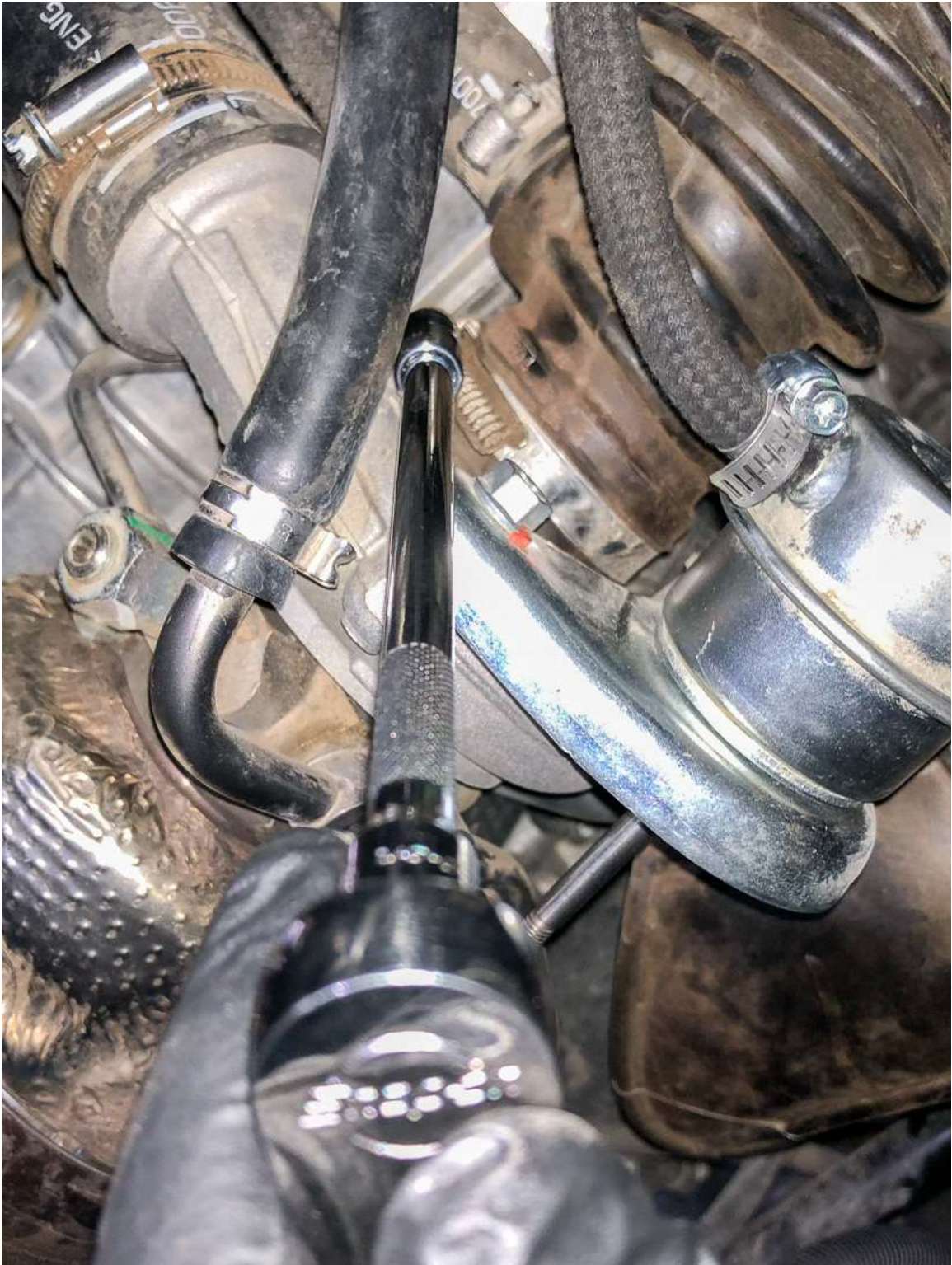




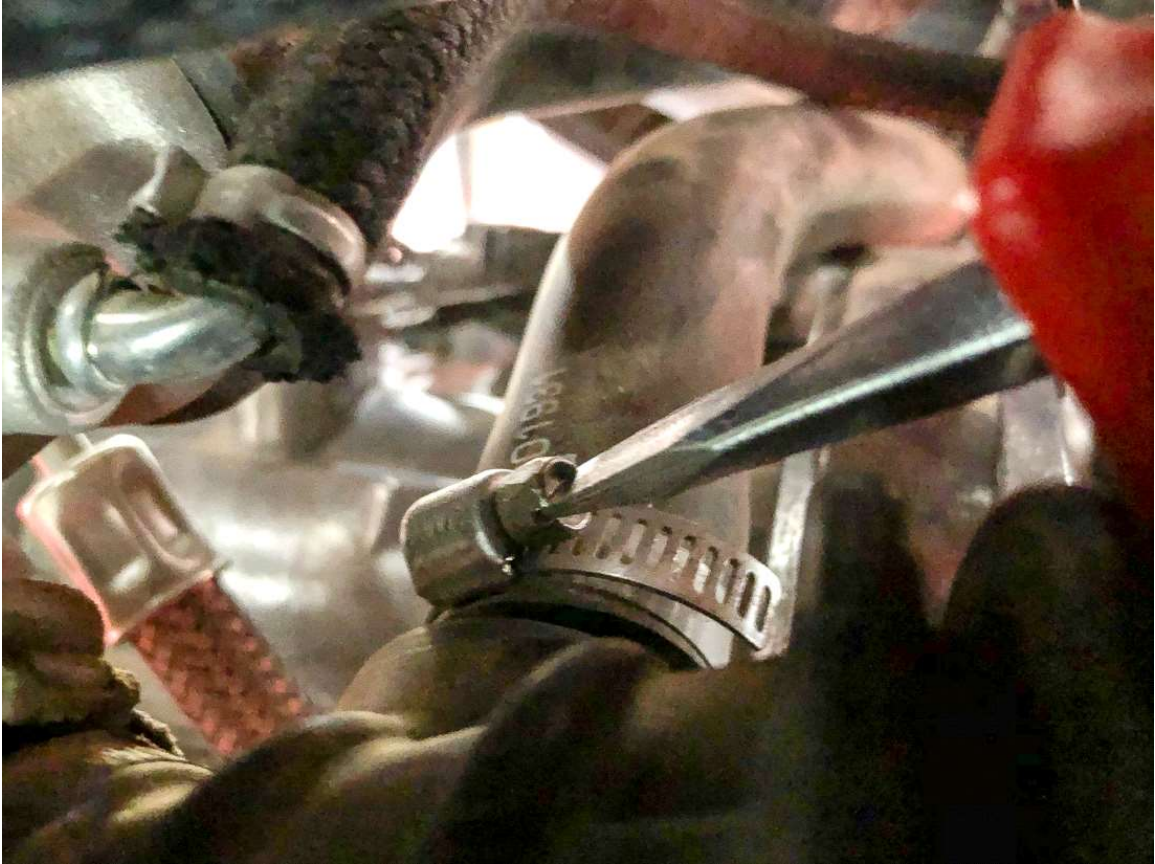
STEP 2 – disconnect the breather hose from factory air box.



STEP 3 – Loosen the hose clamps on the intake boot.



STEP 4 – Loosen clamp and remove breather hose from intake tube.

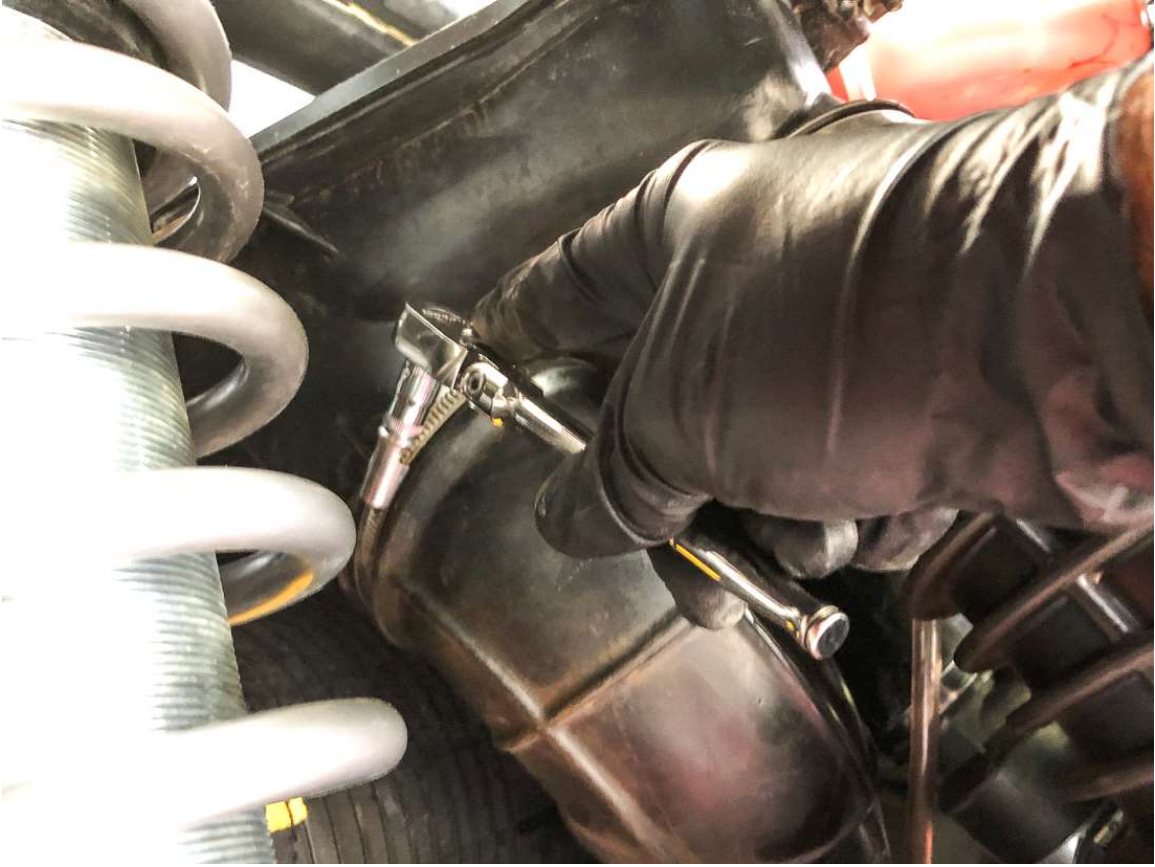


STEP 5 – Remove the two 13mm bolts behind the rear driver seat.





STEP 6 – Loosen hose clamp on clutch vent hose to gain better access to the intake





Loosen hose clamp on intake boot



STEP 7 – Remove breather hose from intake boot and remove intake from vehicle





STEP 8 – Remove air box.





STEP 9 – Remove the indicated 4x T30 Torx Bolts around the top of the intake housing





STEP 10 – Remove rubber tube from the intake housing.



STEP 11 – Add the edge trim seal. Make sure the seal is firmly secured in place.

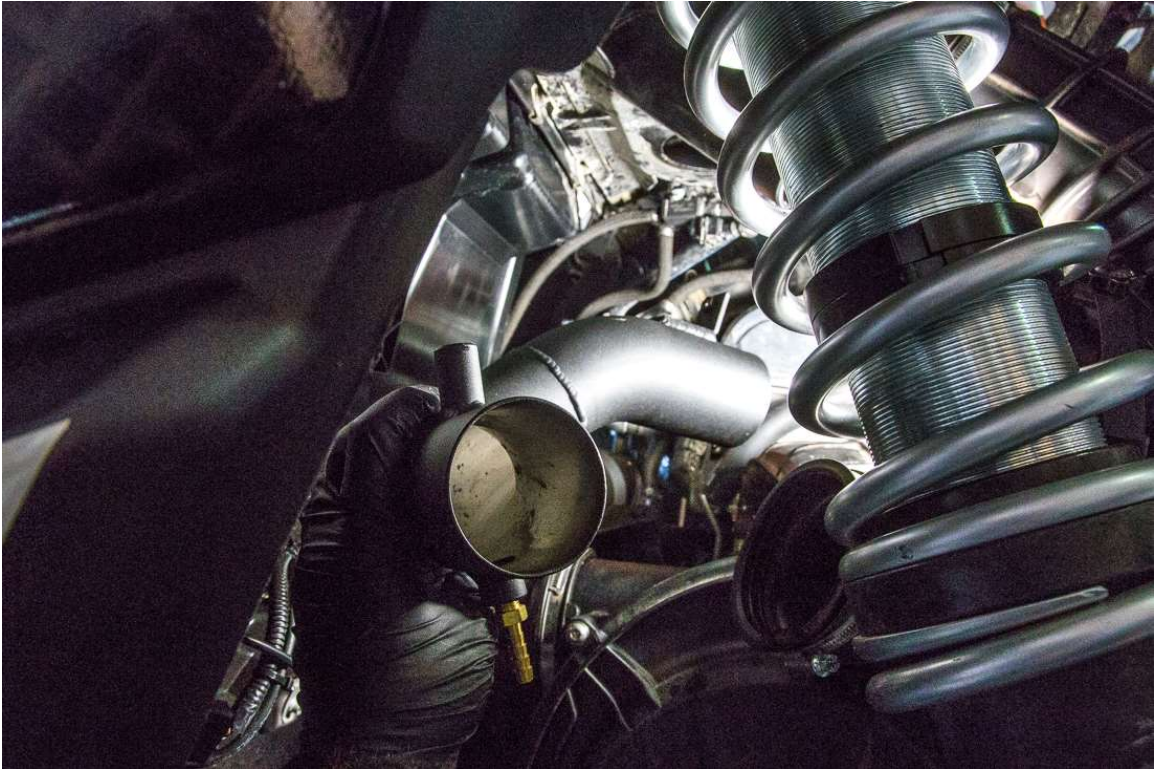


STEP 12 – Attach coupler with hose clamp on to the turbo.



STEP 13 – Feed the new intake tube. For easiest install start with bracket and rotate intake

towards the turbo as shown in the following images below.

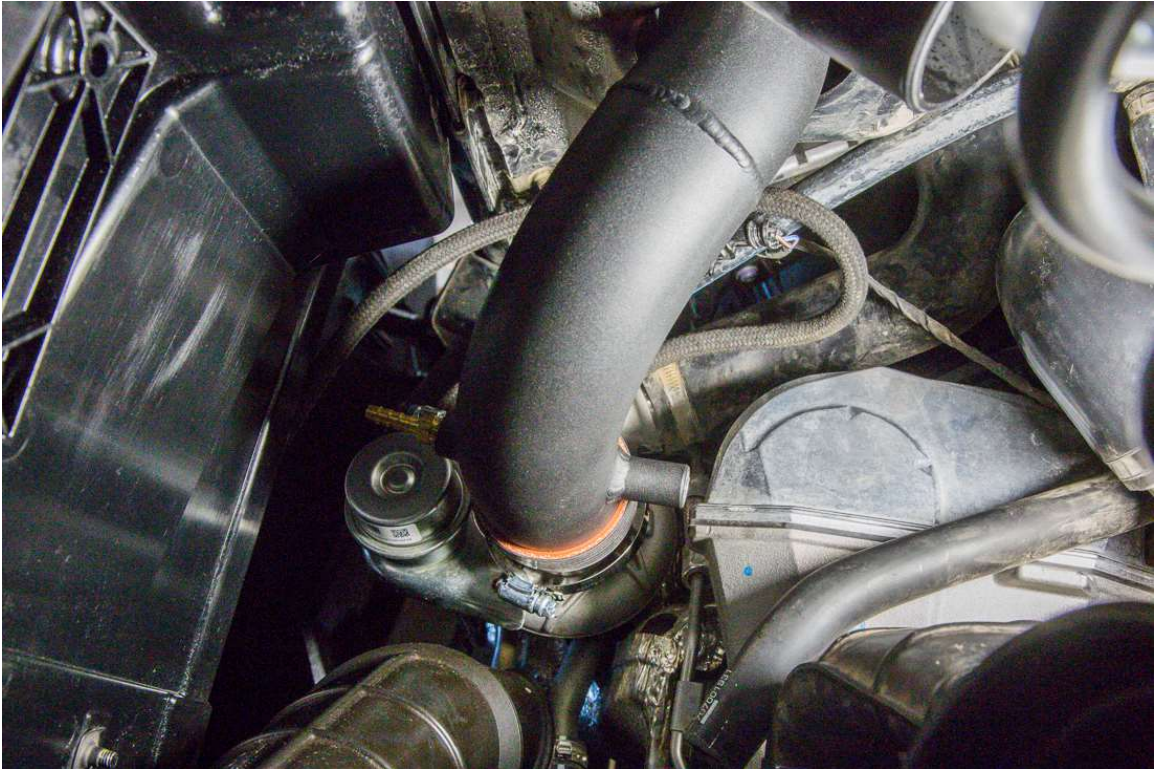




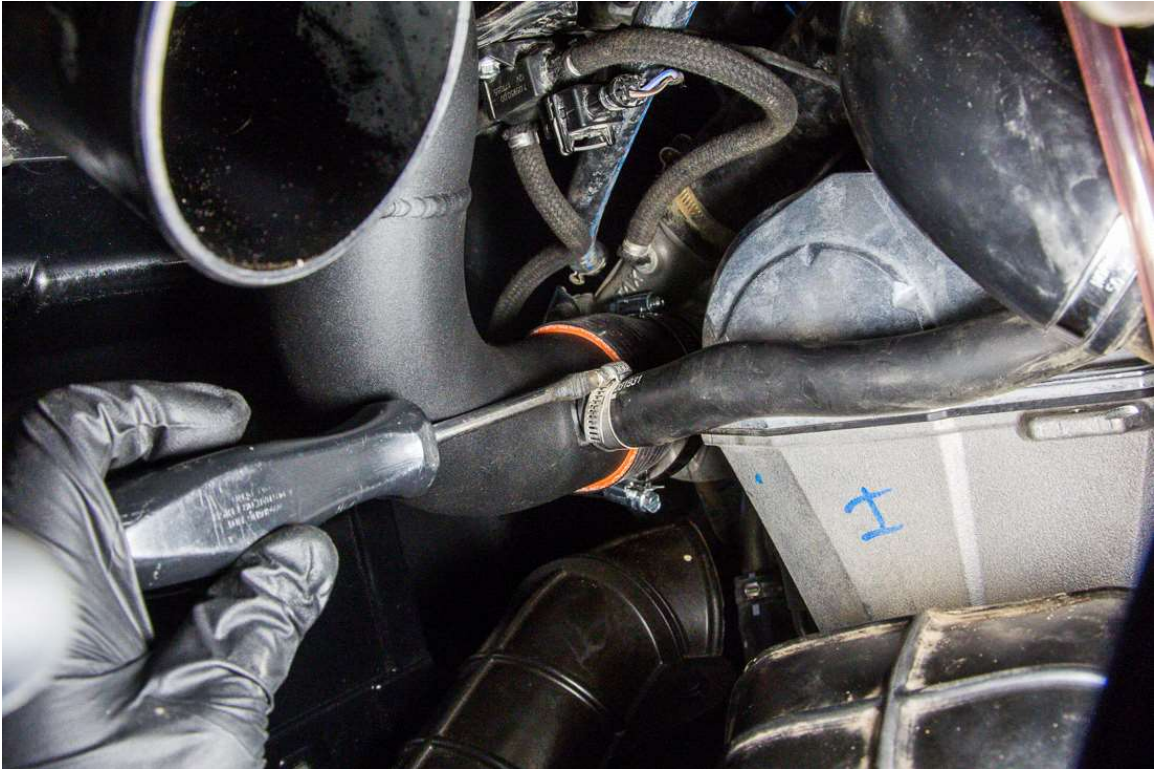




STEP 14 – Connect intake tube to turbo coupler.



STEP 15 – Reattach the breather hose.





STEP 16 – Install the new Agency Power vented cover.





STEP 17 – Use provided hardware to attach intake tube and secure the vent to the intake housing by using the extended hardware.









STEP 18 – Add filter and clamp.





STEP 19 – Tighten clamps on turbo and intake tube.





STEP 20 – Reinstall (boost solenoid) breather hose onto fitting.





STEP 21 – Reinstall engine covers

Install Complete

