



G125

Installation instructions for your Polaris General Turbo System

2019

FORCE TURBOS



REMOVING THE BED, EXHAUST AND OIL PLUG

1. Start by removing bed and all plastics on the back. Set aside parts & fasteners to reinstall later.



2. Remove exhaust.



3. Remove oil supply plug on the passenger side of the vehicle.



INSTALL OIL LINE

4. Install oil supply into case



5. Install oil line & run into the rear of the vehicle.

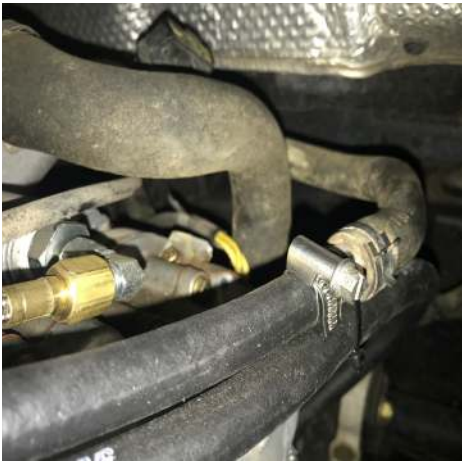


COOLANT LINE

6. Remove coolant line from water pump.



7. Install new line from water pump to turbo.



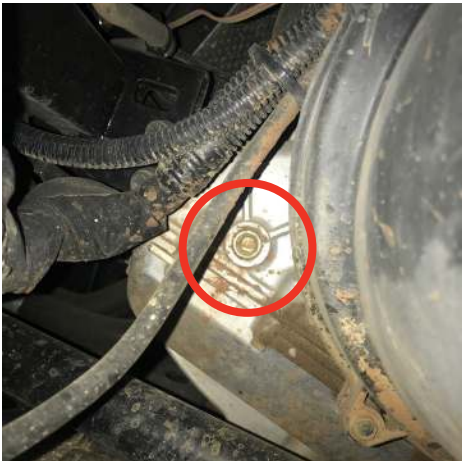
8. Install coolant line with coupler into stock hose that was take off from water pump.



9. Run coolant line to the back of the vehicle.

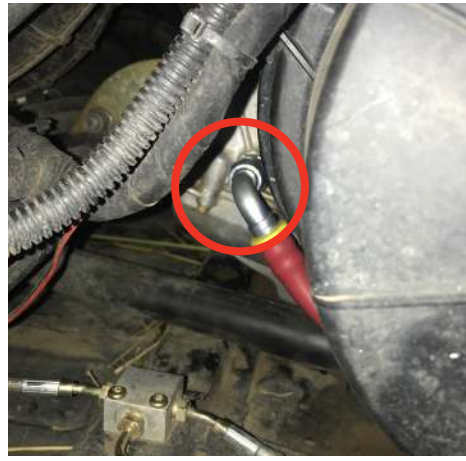


10. Zip tie lines away from exhaust.



OIL DRAIN

11. Find and remove drain plug on the drivers side in front of clutches.



12. Install oil drain fitting into case.



13. Install new oil drain line and route to back, making sure that it doesn't hit drive line.



INSTALL TURBO ASSEMBLY: FOR SYSTEMS WITH RESONATOR

14.a Place turbo assembly in the position that's going to be, but DO NOT MOUNT YET.

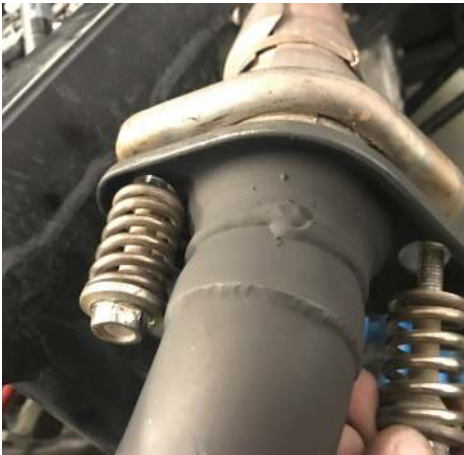


INSTALL TURBO ASSEMBLY: FOR SYSTEMS WITH REDUCE SOUND MUFFLER

14.b Install turbo system in final position using the provided mounting bolts.



15. Install coolant lines to it BEFORE you mount the turbo assembly and wrap them with heat tape provided.



16. Now install bolts to exhaust.



17. Install provided mounting bolts to bottom bracket through stock rubber mounts & bolt on the back side.



In systems with a Reduced Sound Muffler, this was done before (on step 14.b)



18. Install oil line to the turbo.



19. Install oil drain into the bottom of the turbo assembly.



CHARGE TUBE

20. Install charge tube.



21. Install map sensor from Power Commander. **IF YOU UPGRADED TO A POWER VISION, YOU DON'T NEED TO DO THIS.**



COLD AIR INTAKE

22. Connect cold air intake to turbo.



23. Connect other end of cold air intake to the air box.



24. Connect crank case breather hose to intake.



25. Install Power Commander (or Power Vision) as per instructions.



26. Connect grey Power Commander TPS wire to solid green wire on TPS (notice the location of green wire in picture.)



27. Remove stock injectors. Install new injectors provided using injector plug pig tail to Power Commander.



28. **WARNING:** Make sure O-rings are seated properly and fuel leaks are non-existent. **FUEL LEAKS CAUSE FIRES.**



29. Reinstall the bed and all plastics. If you have the Reduced Sound Muffler, set the bed in position, and follow the next steps.



INSTALLING THE BED LIMITER

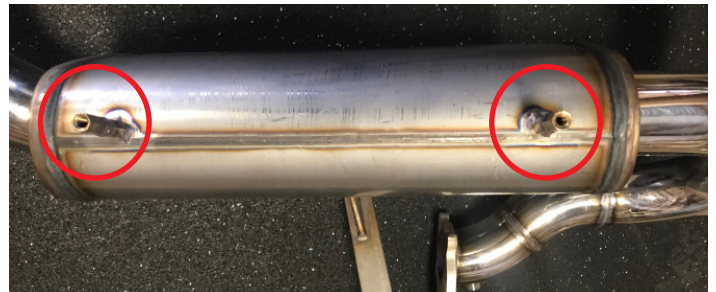
30. Remove the R Keys of the bed shock and set them aside (in case they're installed). Remove the top pin of the bed shock and set it aside.



31. Install one end of the Limiter together with the sock in the bottom pin of the shock.



32. Install the top pin half way. Slowly push the bed down to line up with the Limiter. Then, install the loose end of the Limiter and the top side of the shock in the pin and push the pin all the way through. Replace the R keys.



33. Bolt the stock exhaust cover to the top and bottom of the new Reduced Sound Muffler using the stock bolts.



34. Make sure all clamps are tight.



35. Your Reduced Sound Muffler comes ready to install a RZR 1000 spark arrester if wanted.