

Honda Talon Winch Plate Install

1



REMOVE FRONT BUMPER
BOTH SIDES

2



FRONT BUMPER REMOVED

3



WINCH PLATES AND HARDWARE

4



INSTALL YOUR WINCH BOLTS ON
OUR PLATE

5



REMOVE TOP A ARM BOLTS, BOTH
SIDES, SUPPORT VEHICLE

6



INSTALL SUPPLIED NEW A ARM
BOLTS BOTH SIDES

7



HANG WINCH PLATE FROM A ARM
BOLTS

8



INSTALL SPACER BETWEEN FRAME
AND WINCH PLATE BOTH SIDES

9



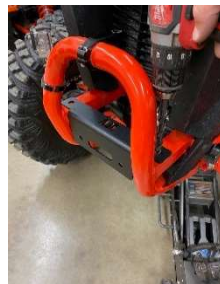
INSTALL AND TIGHTEN U BOLTS AND
A ARM BOLTS BOTH SIDES

10



REINSTALL FRONT BUMPER

11



DRILL 1/2" HOLES FOR FAIRLEAD
MOUNT IN BUMPER

12



INSTALL AND TIGHTEN BOLTS WITH
HEAVY WASHERS ON BOTTOM

PLEASE GIVE @AJKOFFROAD A SHOUT OUT ON SOCIAL MEDIA AFTER INSTALL
PLEASE CONTACT AJK OFFROAD WITH ANY QUESTIONS AT : CONTACT@AJKOFFROAD.COM