



INSTALLATION INSTRUCTIONS

BUMPER KIT

Part Number: 103392

Application: POLARIS RZR 1000

GENERAL SAFETY PRECAUTIONS

Your safety, and the safety of others, is very important. To help you make informed decisions about safety, we have provided installation and operating instructions and other information on labels and in this guide. This information alerts you to potential hazards that could hurt you or others. It is not possible to warn you about all potential hazards associated with this product, you must use your own good judgment.

CARELESS INSTALLATION AND OPERATION CAN RESULT IN SERIOUS INJURY OR EQUIPMENT DAMAGE. READ AND UNDERSTAND ALL SAFETY PRECAUTIONS AND OPERATING INSTRUCTIONS BEFORE INSTALLING AND OPERATING THIS PRODUCT.

This guide identifies potential hazards and has important safety messages that help you and others avoid personal injury or death. WARNING and CAUTION are signal words that identify the level of hazard. These signal words mean:

▲WARNING signals a hazard that could cause serious injury or death, if you do not follow recommendations. ▲CAUTION signals a hazard that may cause minor to moderate injury, if you do not follow recommendations.

This guide uses NOTICE to call attention to important mechanical information, and Note: to emphasize general information worthy of special attention.

▲ WARNING

IMPACT AND MOVING PARTS ENTANGLEMENT HAZARD

Failure to observe these instructions could lead to severe injury or death

- **Always** take time to fully read the Instructions and/or Operations Guide, and/or Basic Guide to Winching Techniques, in order to understand your winch and its operations.
- **Always** use extreme caution when drilling on any vehicle. Make sure that all fuel lines, brake lines, electrical wires, and other objects are not punctured or damaged when/if drilling on the vehicle. Thoroughly inspect the area to be drilled (on both sides of material) prior to drilling, and relocate any objects that may be damaged. Failure to inspect the area to be drilled may result in vehicle damage, electrical shock, fire or personal injury.
- **Always** wear safety glasses when installing this kit. A drilling operation will cause flying metal chips. Flying chips can cause eye injury.
- **Always** use extreme caution when cutting and trimming during fitting.
- **Always** remove jewelry and wear eye protection.
- **Never** lean over battery while making connections.
- **Never** route electrical cables:
 - o Across any sharp edges.
 - o Through or near moving parts.
 - o Near parts that become hot.
- **Always** insulate and protect all exposed wiring and electrical terminals.
- **Always** install terminal boots as directed in installation instructions.
- **Always** use appropriate and adequate care in lifting components into place.
- **Always** insure components will remain secure during installation and operation.
- **Always** tighten all nuts and bolts securely, per the installation instructions.
- **Always** perform regular inspections and maintenance on the plow mechanism, fasteners, cable and related hardware.
- **Always** replace all worn or damaged parts before operating.
- **Never** operate this WARN product with damaged or missing parts.

Read installation and operating instructions thoroughly.

WARN INDUSTRIES, INC. 12900 S.E. Capps Road,
Clackamas, OR USA 97015-8903, 1-503-722-1200, FAX: 1-503-722-3000
Customer Service: 1-800-543-9276
Dealer Locator Service: 1-800-910-1122
International Fax: 1-503-722-3005

CAUTION

MOVING PARTS ENTANGLEMENT HAZARD

Failure to observe these instructions could lead to minor or moderate injury

- **Always** take time to fully read and understand the installation and Operations Guide included with this product.
- **Never** operate this product if you are under 16 years of age.
- **Never** operate this product when under the influence of drugs, alcohol or medications.

Read installation and operating instructions thoroughly.

NOTICE

EQUIPMENT DAMAGE

- **Never** tow vehicle by attaching a tow bar to the eyelets on the bumper.
- **Never** attach tow bars directly to the bumper. Damage to bumper may occur. WARN bumpers are not designed to be used for flat towing. Consult with the manufacturer of your tow bar system for the proper vehicle tow bar brackets..

Read installation and operating instructions thoroughly.

TABLE OF CONTENTS

Tools Required.....	page 2
Torque Specifications.....	page 2
Parts List.....	page 3
Installation.....	page 4-7
Maintenance/Care.....	page 7

TOOLS REQUIRED

- Standard and Metric wrenches
- Standard and Metric sockets

TORQUE SPECIFICATIONS

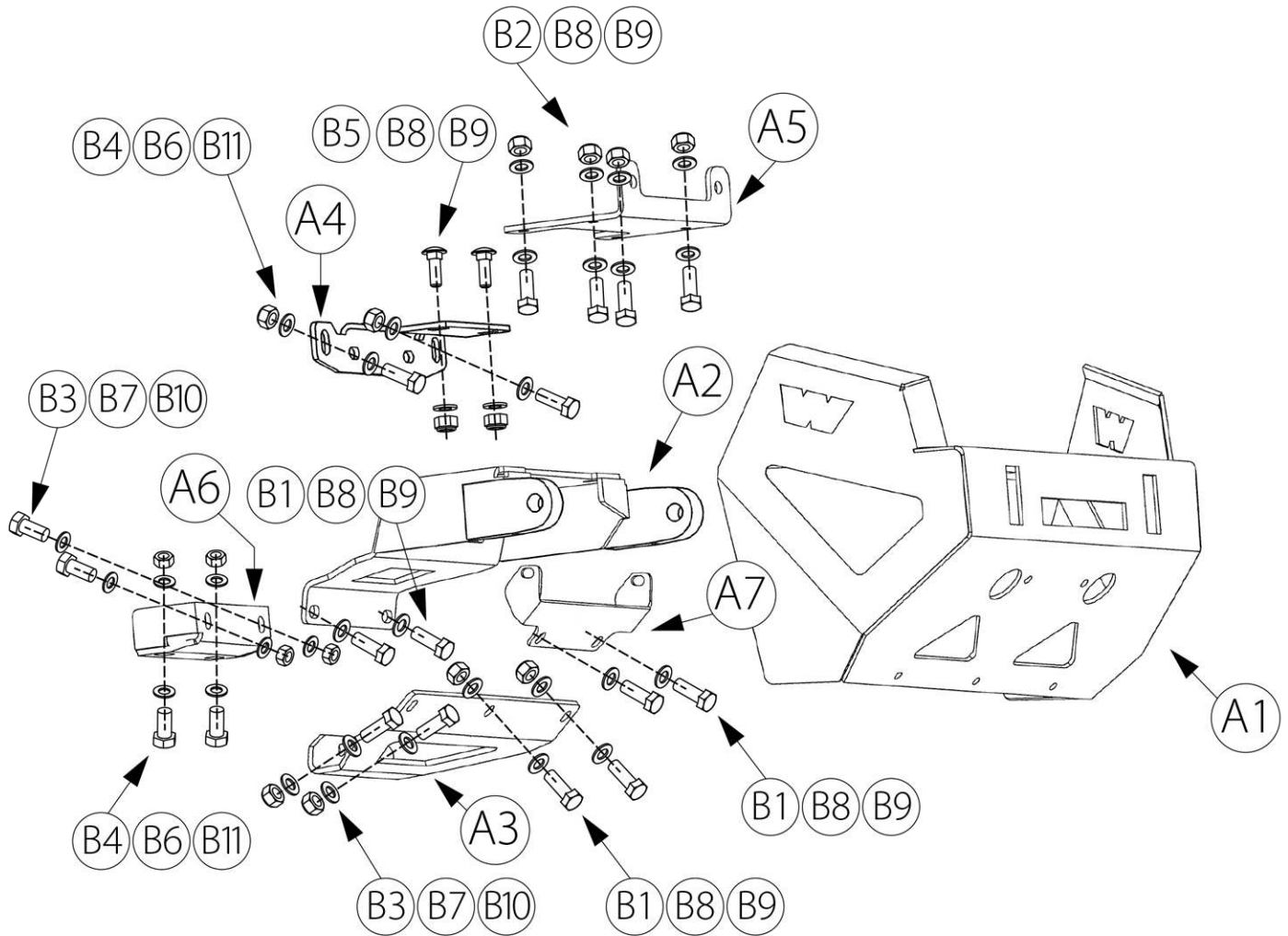
Please use the recommended torque specifications when assembling this product unless otherwise specified in the instructions.

FASTENER SIZE	FASTENER TORQUE		FASTENER SIZE	FASTENER TORQUE	
	lb-ft	(N.m)		lb-ft	(N.m)
1/4"	8	(11)	M4	(2)	3
5/16"	17	(23)	M5	(4.5)	6
3/8"	30	(40)	M6	(7.5)	10
7/16"	48	(66)	M8	(18)	25
1/2"	74	(100)	M10	(37)	50
9/16"	106	(144)			
5/8"	148	(200)			
3/4"	269	(364)			

PARTS LIST

ITEM	DESCRIPTION	QTY
A1	BUMPER MOUNT	1
A2	UPPER FRAME BRACKET	1
A3	LOWER SUPPORT BRACKET	1
A4	OUTTER FRAME BRACKET	1
A5	FAIRLEAD BRACKET	1
A6	INNER FRAME BRACKED	1
A7	BUMPER LIGHT BRACKED	1

ITEM	DESCRIPTION	QTY
B1	BOLT 8X25 DIN 933	7
B2	BOLT 8X30 DIN 933	4
B3	BOLT 10X30 DIN 933	4
B4	BOLT 12X30 DIN 933	4
B5	BOLT 8X25 DIN 603	2
B6	NUT M12 HEX-GR DIN 985	4
B7	NUT M10 HEX-GR DIN 985	4
B8	NUT M8 HEX-GR DIN 985	11
B9	WASHER 8 DIN 125	22
B10	WASHER 10 DIN 125	8
B11	WASHER 12 DIN 125	8



INSTALLATION INSTRUCTIONS

1. Remove hood (two screws). Remove the two screws that hold the small cover piece to the front plastic fascia. Remove the top two center screws, two top corner screws (four total) and two bottom center screws of plastic fascia. Unplug each headlight as you begin to pull the front plastic away. Remove plastic fascia completely and carefully set aside (save hardware).



Figure 1

2. Remove hawse and its bracket. Save standard hardware.

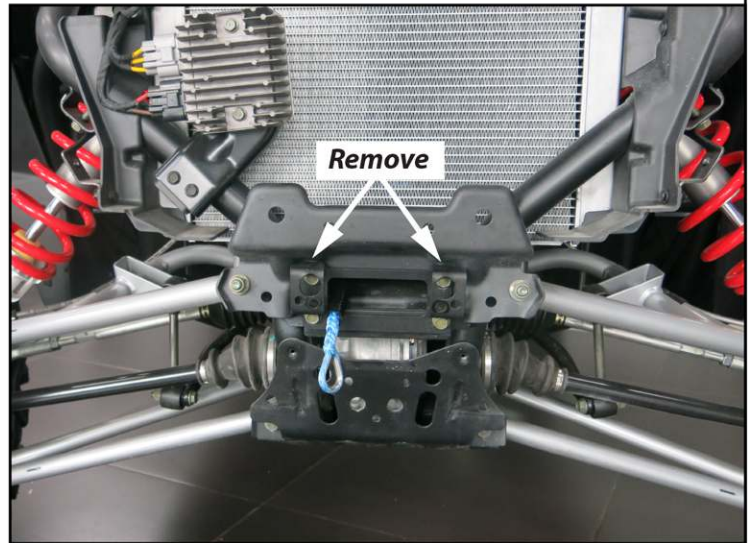


Figure 2

3. Install the lower support bracket (A3) using bolts (B3), washers (B9) and insert nuts (B7). Do not tighten completely to allow movement in the bracket.

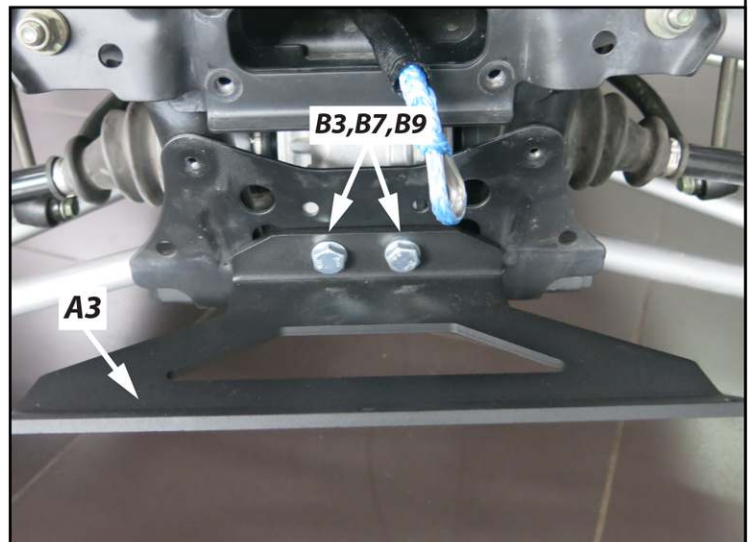


Figure 3

INSTALLATION INSTRUCTIONS

4. Install bumper mounting bracket (A6) and the bolts (B4), washers (B11) with the nuts (B6). Tighten the bolts aligning the holes of bracket and vehicle frame.

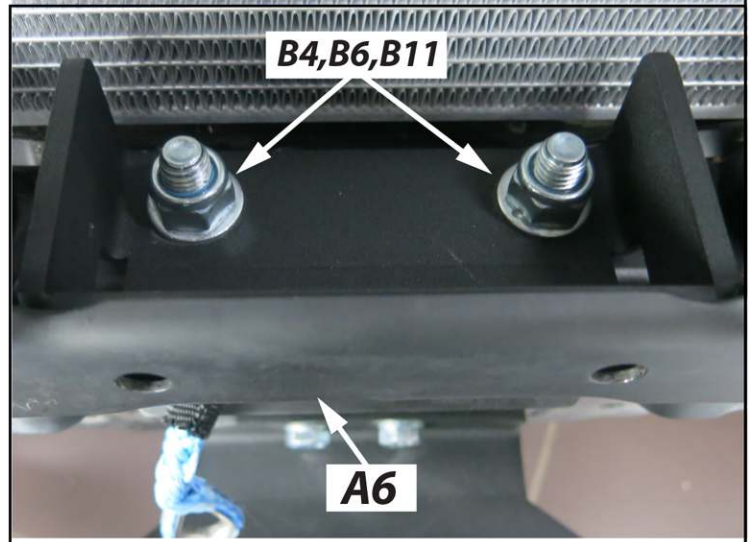


Figure 4

5. Install the upper mounting plate (A4) using bolts (B3, B4), washers (B10, B11) and nuts (B6, B7). Tighten.

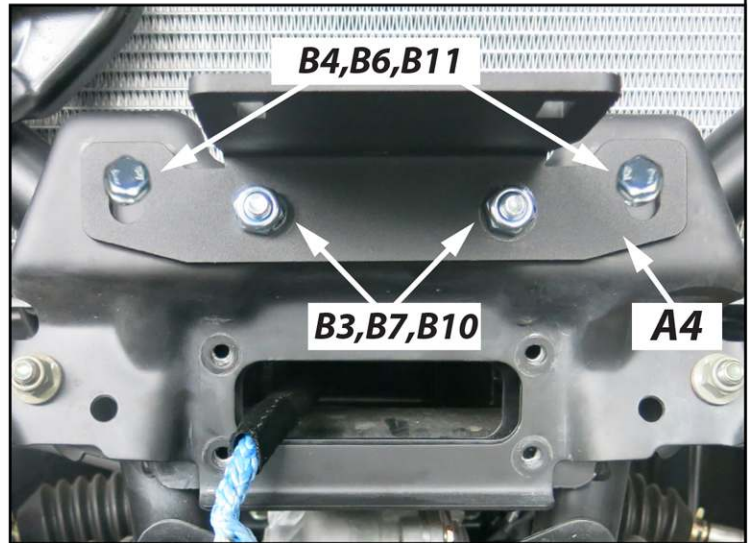


Figure 5

6. Place the front plastic back into position and secure with previously removed hardware. Install the headlight terminals.



Figure 6

INSTALLATION INSTRUCTIONS

7. Install and secure the upper mounting bracket (A2) using the factory bolts removed on step 2. Secure upper holes using bolts (B5), washers (B9) and nuts (B8). Do not tighten completely. Secure lower holes using bolts (B1) and washers (B9). Tighten.

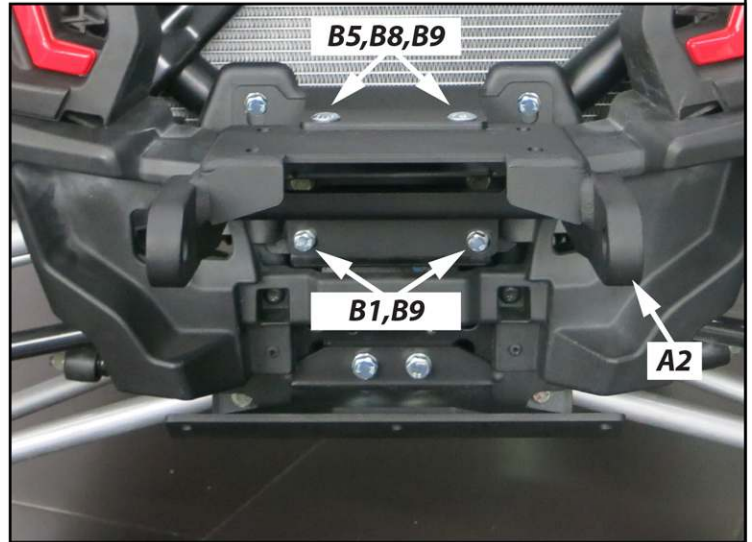


Figure 7

8. Install the light bracket (A7) to bumper using the supplied bolts (B1), washers (B9) and nuts (B8). 15. If you have a light bar, install now. NOTE: Only 6" bar will fit.

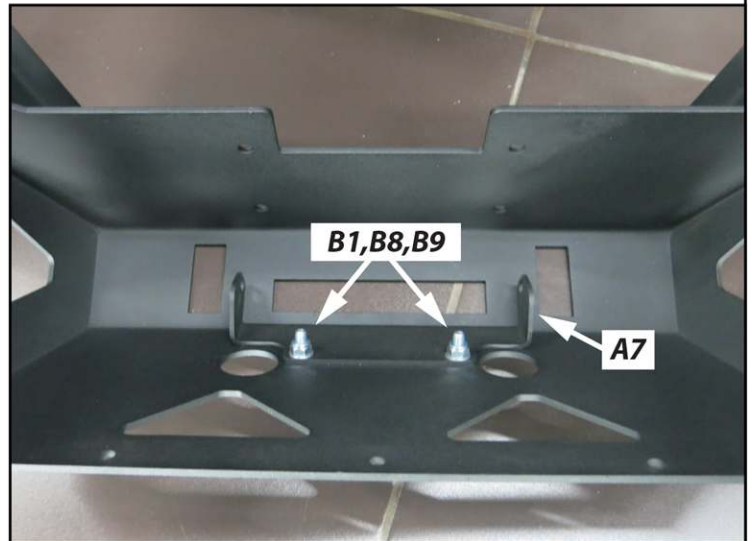


Figure 8

9. Slide the bumper (A1) over the d-ring loops in upper mounting bracket. Align the winch mounting holes in bumper and bracket. Loosely install the lower three bolts (B9) and lock nuts (B7) as shown.

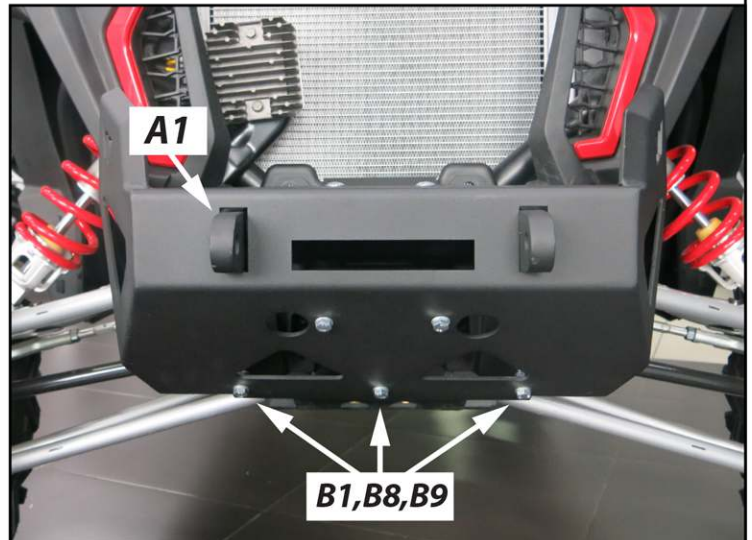


Figure 9

INSTALLATION INSTRUCTIONS

10. Install bumper (A1) and fairlead bracket (A5). Place winch on top of fairlead plate secure winch. Secure them to frame bracket (A2) using bolts (B2), washers (B9) and nuts (B8). Do not completely tighten at this time to allow for adjusting.

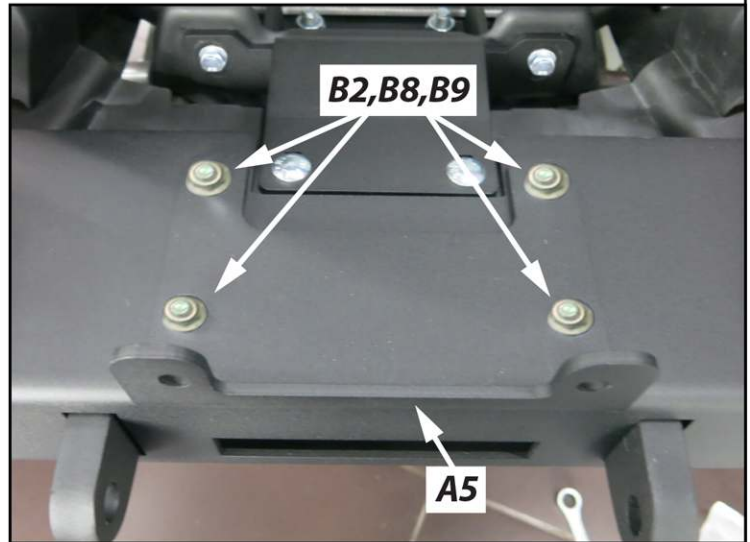


Figure 10

11. Re-install your plastic hood and grill.



Figure 11

MAINTENANCE / CARE

1. Inspect all parts on the winch, winch mount, and related hardware prior to each use. Replace all hardware that appears rusted or deformed.
2. Inspect all nuts and bolts on the winch, winch mount and related hardware prior to each use. Tighten all nuts that appear to be loose. Stripped, fractured, or bent bolts or nuts need to be replaced.
3. Check all cables prior to use. Replace cables that look worn or frayed.
4. Check all moving or rotating parts. Remove debris that may inhibit the part from moving freely.