



INSTALLATION INSTRUCTIONS MOUNTING KIT BUMPER

Part Number: 104300

Application: 2019 Honda Talon

GENERAL SAFETY PRECAUTIONS

Your safety, and the safety of others, is very important. To help you make informed decisions about safety, we have provided installation and operating instructions and other information on labels and in this guide. This information alerts you to potential hazards that could hurt you or others. It is not possible to warn you about all potential hazards associated with this product, you must use your own good judgment.

CARELESS INSTALLATION AND OPERATION CAN RESULT IN SERIOUS INJURY OR EQUIPMENT DAMAGE. READ AND UNDERSTAND ALL SAFETY PRECAUTIONS AND OPERATING INSTRUCTIONS BEFORE INSTALLING AND OPERATING THIS PRODUCT.

This guide identifies potential hazards and has important safety messages that help you and others avoid personal injury or death. WARNING and CAUTION are signal words that identify the level of hazard. These signal words mean:

▲WARNING signals a hazard that could cause serious injury or death, if you do not follow recommendations. **▲CAUTION** signals a hazard that may cause minor to moderate injury, if you do not follow recommendations.

This guide uses **NOTICE** to call attention to important mechanical information, and Note: to emphasize general information worthy of special attention.

▲ WARNING

Impact and Moving Parts Entanglement Hazard

FAILURE TO OBSERVE THESE INSTRUCTIONS COULD LEAD TO SEVERE INJURY OR DEATH

- **Always** Know Your Winch. Take time to fully read the Instructions and/or Operations Guide, and/or Basic Guide to Winching Techniques, in order to understand your winch and its operations.
- **Never** work under vehicle before properly securing vehicle.
- **Always** use appropriate and adequate care in lifting components into place.
- **Never** work under vehicle before properly securing vehicle.
- **Always** use appropriate and adequate care in lifting components into place.
- **Never** use a jack to support the vehicle.
- **Always** use jack stands in pairs to support the vehicle.
- **Always** use jacks or jack stands only on a hard, stable, and level surface.
- **Never** exceed the rated capacity of a jack or jack stands.
- **Always** verify that the parking brake is set, the transmission is in park (automatic) or reverse (manual) and the rear wheels are blocked before working on vehicle.
- **Never** work under vehicle before properly securing vehicle.
- **Always** use appropriate and adequate care in lifting components into place.
- **Always** insure components will remain secure during installation and operation.
- **Always** tighten all nuts and bolts securely, per the installation and operation.
- **Always** perform regular inspections and maintenance on the winch, winch mount and related hardware.
- **Always** replace all worn or damaged parts before operating.
- **Never** operate this WARN product with damaged or missing parts.
- **Always** use extreme caution when drilling on any vehicle. Make sure that all fuel lines, brake lines, electrical wires, and other objects are not punctured or damaged when / if drilling on the vehicle. Thoroughly inspect the area to be drilled (on both sides of material) prior to drilling, and relocate any objects that may be damaged. Failure to inspect the area to be drilled may result in vehicle damage, electrical shock, fire or personal injury.
- **Always** use extreme caution when cutting and trimming during fitting.
- **Always** wear safety glasses when installing this kit. A drilling operation will cause flying metal chips. Flying chips can cause eye injury.
- **Always** remove jewelry and wear eye protection.
- **Never** lean over battery while making connections.
- **Never** route electrical cables across any sharp edge, through or near moving parts, near parts that become hot.

Read installation and operating instructions thoroughly.

WARN INDUSTRIES, INC. 12900 S.E. Capps Road,
Clackamas, OR USA 97015-8903, 1-503-722-1200, FAX: 1-503-722-3000
Customer Service: 1-800-543-9276
Dealer Locator Service: 1-800-910-1122
International Sales/Customer Service: 1-503-722-3008
International Fax: 1-503-722-3005

⚠ CAUTION

Moving Parts Entanglement Hazard

FAILURE TO OBSERVE THESE INSTRUCTIONS COULD LEAD TO MINOR OR MODERATE INJURY

- Part edges may be sharp!
- Always use proper posture / lifting technique or get lifting assistance while handling and installing product.

Read installation and operating instructions thoroughly.

TABLE OF CONTENTS

Tools Required.....	page 2
Torque Specifications.....	page 2
Parts List.....	page 3
Installation.....	page 4-6
Maintenance/Care.....	page 6

TOOLS REQUIRED

- Standard and Metric wrenches
- Standard and Metric sockets
- Ratchet
- Extension
- Cutting tool

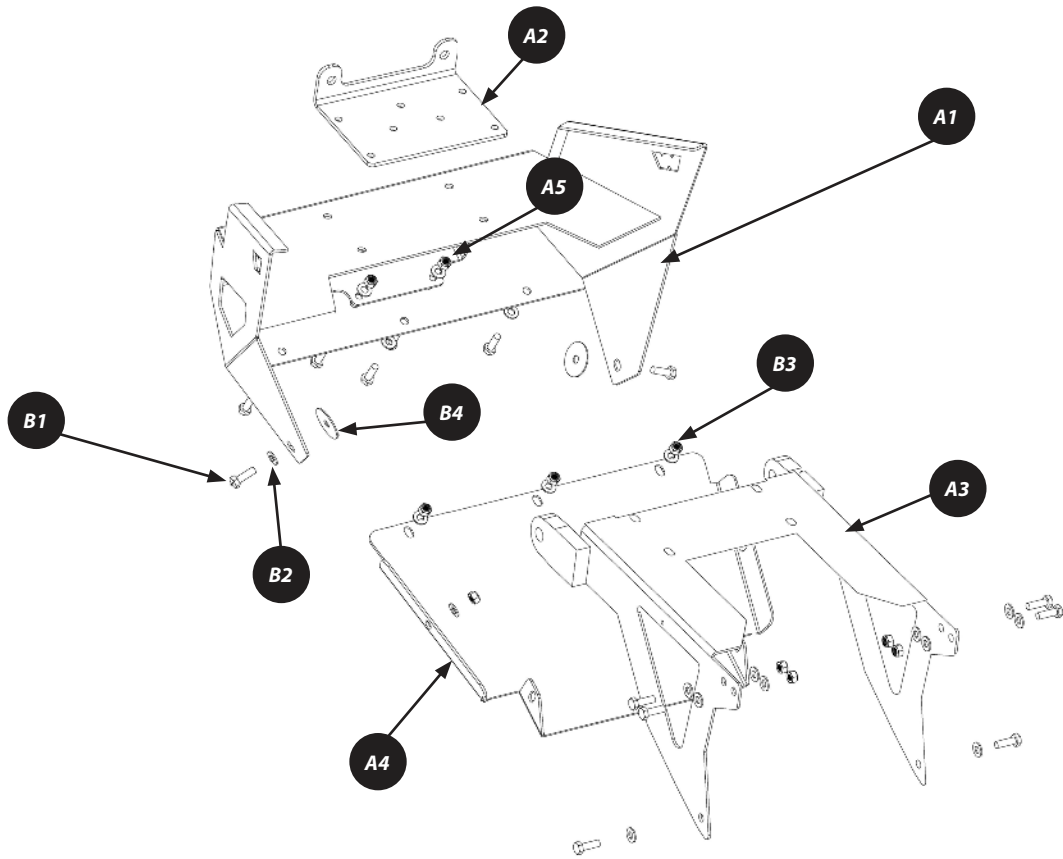
TORQUE SPECIFICATIONS

Please use the recommended torque specifications when assembling this product unless otherwise specified in the instructions.

FASTENER SIZE	FASTENER TORQUE		FASTENER SIZE	FASTENER TORQUE	
	lb-ft	(N.m)		lb-ft	(N.m)
1/4"	8	(11)	M4	(2)	3
5/16"	17	(23)	M5	(4.5)	6
3/8"	30	(40)	M6	(7.5)	10
7/16"	48	(66)	M8	(18)	25
1/2"	74	(100)	M10	(37)	50
9/16"	106	(144)			
5/8"	148	(200)			
3/4"	269	(364)			

PARTS LIST

Part Number	Qty	Description
A1	1	BUMPER SHELL
A2	1	FAIRLEAD PLATE
A3	1	UPPER BUMPER MOUNT
A4	1	SKID PLATE
A5	1	LIGHT BRACKET
B1	19	M8 X 25MM HEX HEAD BOLT
B2	28	FLAT WASHER
B3	11	M8 LOCK NUT
B4	2	PLASTIC WASHER



INSTALLATION INSTRUCTIONS



Figure 1

INSTALLATION INSTRUCTIONS

1. Remove the bumper by removing the two torx head screws, two upper bolts and one lower from each side of vehicle. Retain hardware.
2. Slide bumper forward while carefully levering the plastic out of the way.

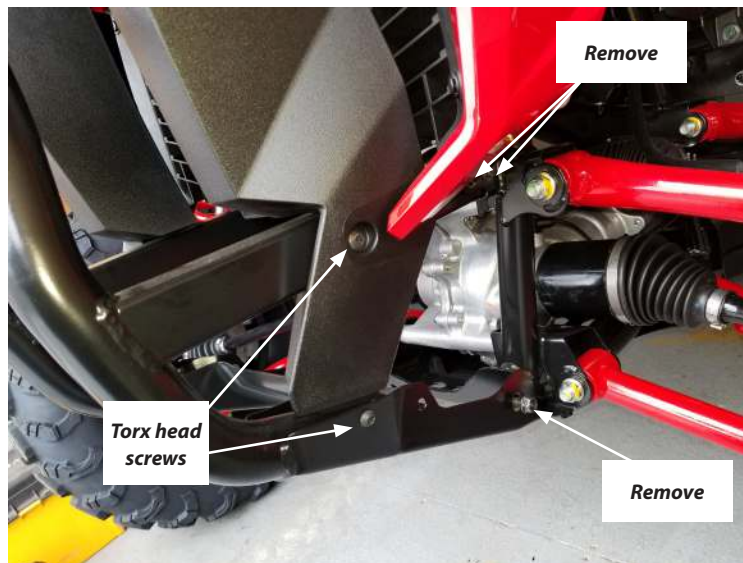


Figure 2

3. Line up the new bumper mount (A3) with the stock bumper mounting location.
4. Install one M8 bolts (B1) with washer (B2) through the top two mounting holes (each side).
5. Insert one M8 bolt (B1) through bottom mounting hole (each side). **NOTE: This is to help hold mount up in place and will be removed in a later step.**
6. Secure upper bolts with one washer (B2) and lock nut (B3) (each side). **NOTE: Tighten only the upper two bolts, washers and locknuts at this time.**
5. Cut the plastic along the white line shown in the photo (each side).

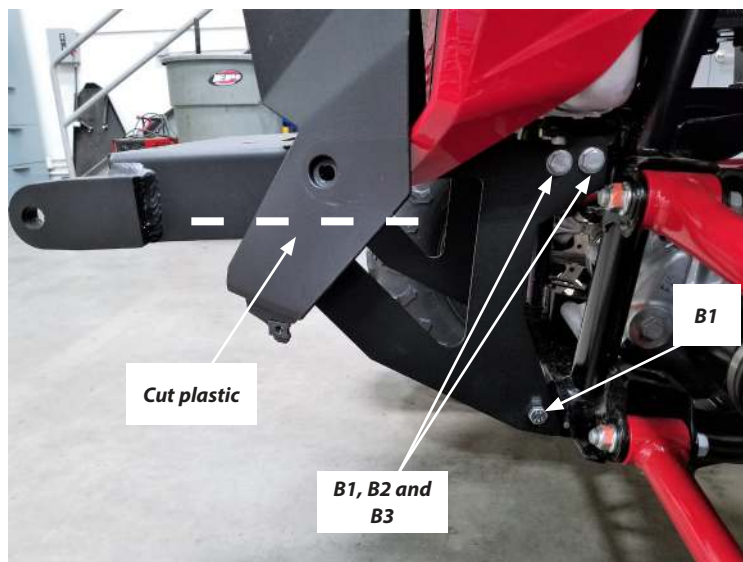


Figure 3

6. Install one factory torx head screw through plastic, upper mounting bracket and frame (each side).
7. Remove the lower mounting bolt (each side).



Figure 4

INSTALLATION INSTRUCTIONS

- Slide the skid plate (A4) into place. **NOTE: The tabs on the skid plate will fit in between the bumper mount and the vehicle frame.**
- Install one M8 bolt (B1) and washer (B2) to lower mounting location.

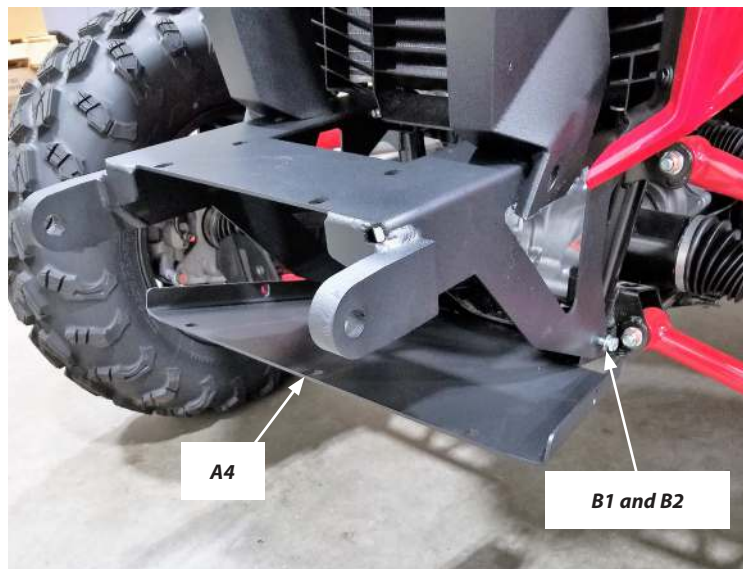


Figure 5

- If you have a light bar, install light bar to light bracket (A5) now.
- Install light bracket to bumper mount using two supplied M8 bolts (B1), four washers (B2) and two nuts (B3). Refer to exploded view on page 3.
- While lifting up on the skid plate, slide the bumper shell (A1) over the upper mounting bracket. **NOTE: The skid plate should fit on the inside edge of the bumper shell.**

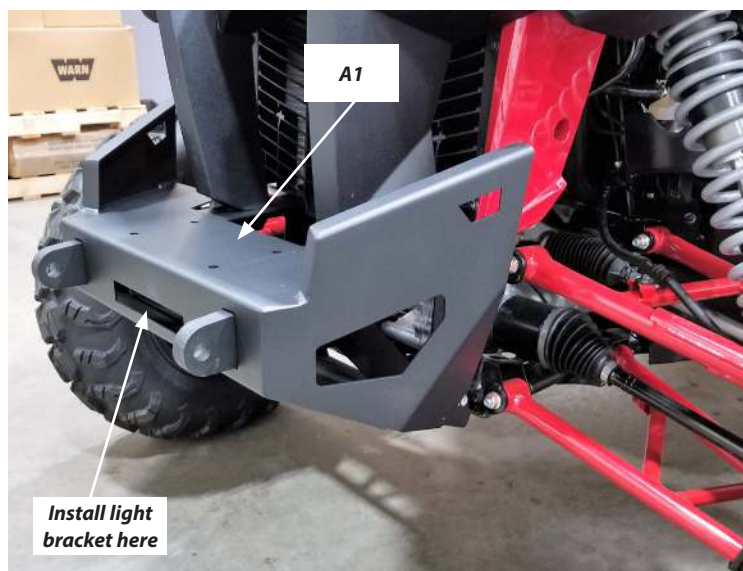


Figure 6

- Install one M8 bolt (B1) and one flat washer (B2) through the lower bumper end cap mounting hole. **Do not continue all the way through the skid plate yet.**
- Insert one plastic washer (B4) over bolt. **NOTE: The plastic washer sits in between the end cap and the skid plate. Trim any excess off washer if necessary.**
- Continue threading bolt through skid plate and fasten with lock nut (B3). Refer to exploded view on page 3.
- Repeat for other side.

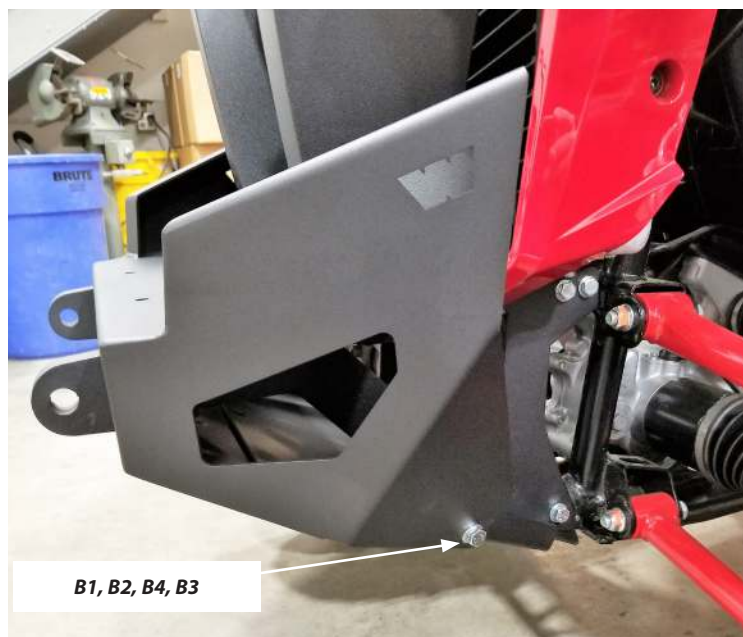


Figure 7

INSTALLATION INSTRUCTIONS

17. Install three M8 bolts (B1) and washer (B2) through the skid plate and bumper shell mounting holes. Secure with three washers (B2) and lock nuts (B3).

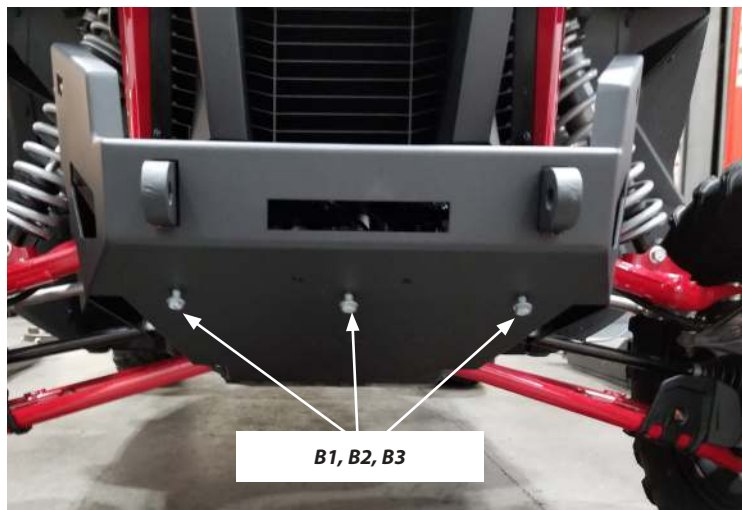


Figure 8

18. Install your fairlead to your fairlead plate (A2) using hardware in your winch kit.
19. Line up fairlead plate with mounting holes on top of bumper mount.



Figure 9

20. Place the winch on top of the fairlead plate.
21. For ease of installation, we recommend attaching your power cables to your winch before installing the winch to the bumper mount. Follow your wiring installation instructions found with your winch.
22. Reach in through the side or the rear of the bumper and thread the four **LONGER** M8 bolts supplied in this kit, up through bumper mount, fairlead plate and into winch feet.
⚠ WARNING Do not use the M8 bolts supplied in your winch kit, they will not be long enough.
23. Torque all hardware per recommendations on page 3.



Figure 10

MAINTENANCE / CARE

1. Inspect all parts on the winch, winch mount, and related hardware prior to each use. Replace all hardware that appears rusted or deformed.
2. Inspect all nuts and bolts on the winch, winch mount, and related hardware prior to each use. Tighten all nuts that appear to be loose. Stripped, fractured, or bent bolts or nuts need to be replaced.
3. Check all cables prior to use. Replace cables that look worn or frayed.
4. Check all moving or rotating parts. Remove debris that may inhibit the part from moving freely.