



# INSTALLATION INSTRUCTIONS

## WINCH MOUNTING KIT

Part Number: 92332

Application: 2013 Polaris RZR 1000

### GENERAL SAFETY PRECAUTIONS

Your safety, and the safety of others, is very important. To help you make informed decisions about safety, we have provided installation and operating instructions and other information on labels and in this guide. This information alerts you to potential hazards that could hurt you or others. It is not possible to warn you about all potential hazards associated with this product, you must use your own good judgment.

**CARELESS INSTALLATION AND OPERATION CAN RESULT IN SERIOUS INJURY OR EQUIPMENT DAMAGE. READ AND UNDERSTAND ALL SAFETY PRECAUTIONS AND OPERATING INSTRUCTIONS BEFORE INSTALLING AND OPERATING THIS PRODUCT.**

This guide identifies potential hazards and has important safety messages that help you and others avoid personal injury or death. **WARNING** and **CAUTION** are signal words that identify the level of hazard. These signal words mean:

▲ **WARNING** signals a hazard that could cause serious injury or death, if you do not follow recommendations. ▲ **CAUTION** signals a hazard that may cause minor to moderate injury, if you do not follow recommendations.

This guide uses **NOTICE** to call attention to important mechanical information, and **Note:** to emphasize general information worthy of special attention.

### ▲ WARNING

#### IMPACT AND MOVING PARTS ENTANGLEMENT HAZARD

Failure to observe these instructions could lead to severe injury or death

- Always use extreme caution when drilling on any vehicle. Make sure that all fuel lines, brake lines, electrical wires, and other objects are not punctured or damaged when / if drilling on the vehicle. Thoroughly inspect the area to be drilled (on both sides of material) prior to drilling, and relocate any objects that may be damaged. Failure to inspect the area to be drilled may result in vehicle damage, electrical shock, fire or personal injury.
- Always wear safety glasses when installing this kit. A drilling operation will cause flying metal chips. Flying chips can cause eye injury.
- Always use extreme caution when cutting and trimming during fitting.
- Always remove jewelry and wear eye protection.
- Never lean over battery while making connections.
- Never route electrical cables:
  - Across any sharp edges.
  - Through or near moving parts.
  - Near parts that become hot.
- Always insulate and protect all exposed wiring and electrical terminals.
- Always install terminal boots as directed in installation instructions.
- Always use appropriate and adequate care in lifting components into place.
- Always insure components will remain secure during installation and operation.
- Always tighten all nuts and bolts securely, per the installation and operation.
- Always perform regular inspections and maintenance on the winch, winch mount and related hardware.
- Never ever operate this WARN product with damaged or missing parts.

Read installation and operating instructions thoroughly.

WARN INDUSTRIES, INC. 12900 S.E. Capps Road,  
Clackamas, OR USA 97015-8903, 1-503-722-1200, FAX: 1-503-722-3000  
Customer Service: 1-800-543-9276  
Dealer Locator Service: 1-800-910-1122  
International Fax: 1-503-722-3005

## ⚠ CAUTION

### MOVING PARTS ENTANGLEMENT HAZARD

Failure to observe these instructions could lead to minor or moderate injury

- Always take time to fully read and understand the installation and Operations Guide included with this product.
- Never operate this product if you are under 16 years of age.
- Never operate this product when under the influence of drugs, alcohol or medications.

Read installation and operating instructions thoroughly.

## NOTICE

### EQUIPMENT DAMAGE

- Always refer to the Installation and Specification Guide, supplied in the winch kit, for all wiring schematics and specific details on how to wire this WARN product to your vehicle.

Read installation and operating instructions thoroughly.

## NOTES

- For 2500 - 3500 winches only

## TABLE OF CONTENTS

Parts List.....	page 2
Torque Specifications.....	page 2
Tools Required.....	page 3
Installation .....	page 4-
Maintenance/Care.....	page

## TORQUE SPECIFICATIONS

Please use the recommended torque specifications when assembling this product unless otherwise specified in the instructions.

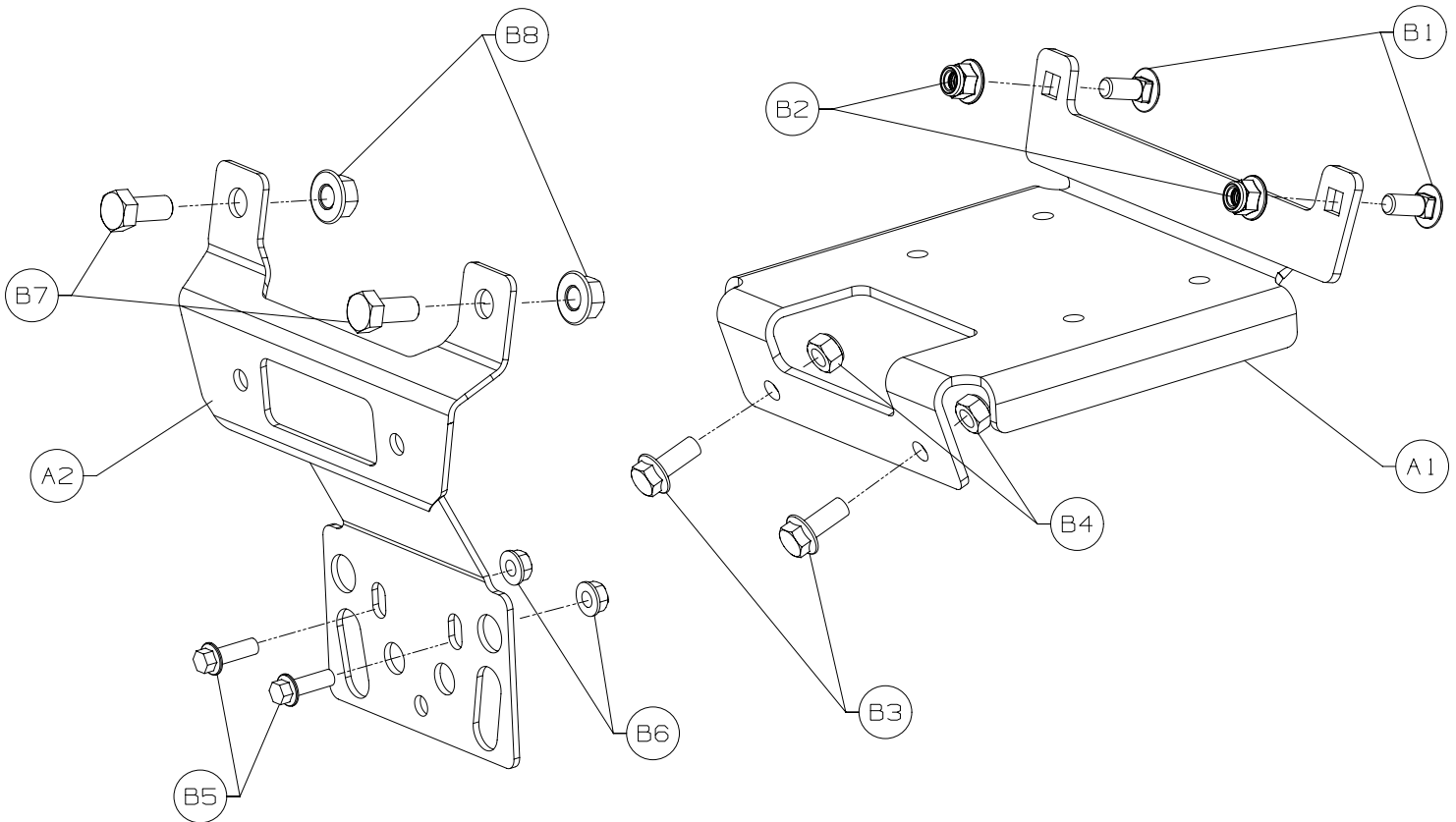
FASTENER SIZE	FASTENER TORQUE	
	lb-ft	(N.m)
1/4"	8	(11)
5/16"	17	(23)
3/8"	30	(40)
7/16"	48	(66)
1/2"	74	(100)
9/16"	106	(144)
5/8"	148	(200)
3/4"	269	(364)
M4	(2)	3
M5	(4.5)	6
M6	(7.5)	10
M8	(18)	25
M10	(37)	50

## PARTS LIST

Reference	Part Number	Description	Qty
A1	92252	Winch mount	1
A2	92253	Fairlead bracket	1
B1	79882	M10X1.5X25, CARRIAGE, ZN	2
B2	87232	LOCKNUT_M10x1.5_NYLON INS_15mm HEX	2
B3	79462	CPSCRW_M10X1.25X25MM_HEX FLNG_BLK ZINC	2
B5	69771	M8-1.25 X 25MM, 10MM HEX,FLANGED HEAD BOLT, BLK ZINC	2
B7	79464	CPSCRW_M12X1.75X25MM_HEX FLNG_BLK ZINC	2
B4	79463	NUT_M10X1.25_HEX_NYLOC_BLK ZINC	2
B8	79465	NUT_M12X1.75_HEX FLN_NYLOC_BLK ZINC	2
B6	69768	M8-1.25, 13MM HEX, FLANGEDNUT, BLK ZINC	2

## TOOLS REQUIRED

- Ratchet
- Ratchet extension
- Torx Set
- Metric wrench set
- Metric socket set



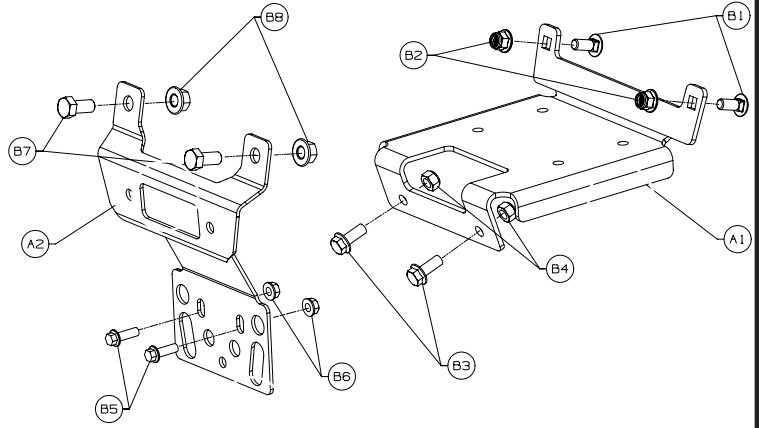
# INSTALLATION INSTRUCTIONS

## Installing Fairlead Bracket

1. Remove the two upper 10mm screws and two lower torx head screws holding small grille plate in place.

Remove small grille plate completely.

**NOTE:** Removing the full grille piece may allow for easier install.



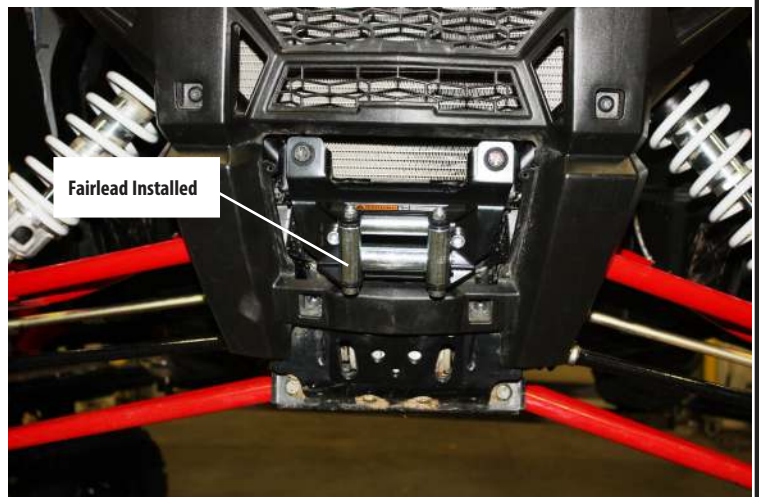
2. Place fairlead bracket in place. Insert the two 12mm hex head bolts in upper bracket holes and secure loosely. Next, insert the two 8mm bolts in lower holes and secure loosely.

4. Tighten hardware now to torque specifications listed on page 2.



5. Using the two center holes in fairlead bracket. Install fairlead, per winch kit instructions.

**NOTE:** Fairlead and fairlead hardware are found in winch kit.

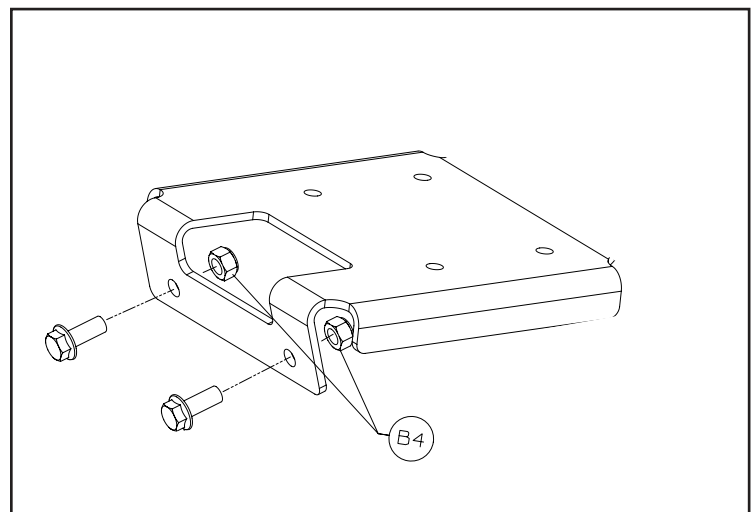
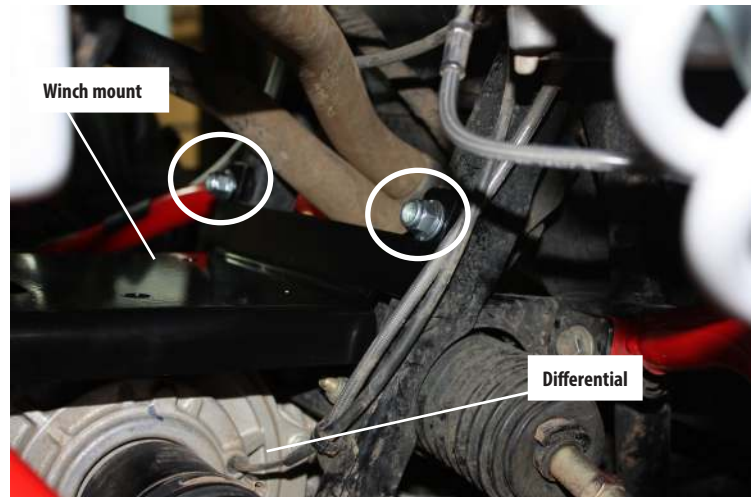


## Install Winch Mount Bracket

**NOTE:** For clarity, some pictures are shown with full grille removed.

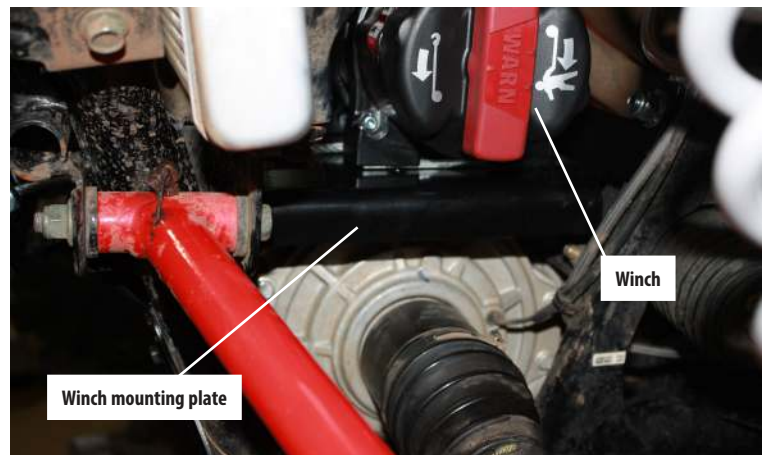
1. Unplug differential tube and push aside to allow room for winch mount placement.
2. Carefully slide winch mount bracket in between right a-arms (left facing front of vehicle) and rest mount on top of differential.
3. Install two 10mm carriage bolts through winch mount upper holes and frame of vehicle. Hand tighten only at this time.
4. Install two 10mm hex head bolts through front (a-arm support and the inner lower winch mounting plate holes.
5. Tighten all hardware at this time.

Re-install differential hose.



6. Install winch to winch mounting bracket using hardware found in winch kit. Feed rope through back of fairlead and out front of fairlead.

Torque hardware to specifications listed in winch mount instructions.



7. Re-install grille plate.

8. Install hook (found in winch kit) to winch rope.



## MAINTENANCE / CARE

1. Inspect all parts on the winch, winch mount, and related hardware prior to each use. Replace all hardware that appears rusted or deformed.
2. Inspect all nuts and bolts on the winch, winch mount, and related hardware prior to each use. Tighten all nuts that appear to be loose. Stripped, fractured, or bent bolts or nuts need to be replaced.
3. Check all cables prior to use. Replace cables that look worn or frayed.
4. Check all moving or rotating parts. Remove debris that may inhibit the part from moving freely.

**CARELESS INSTALLATION AND OPERATION CAN RESULT IN SERIOUS INJURY OR EQUIPMENT DAMAGE. READ AND UNDERSTAND ALL SAFETY PRECAUTIONS AND OPERATING INSTRUCTIONS BEFORE INSTALLING AND OPERATING THIS PRODUCT.**

