



INSTALLATION INSTRUCTIONS FRONT WINCH MOUNTING KIT

Part Number: 89535

Application: 2012 Can Am Renegade 800R

GENERAL SAFETY PRECAUTIONS

Your safety, and the safety of others, is very important. To help you make informed decisions about safety, we have provided installation and operating instructions and other information on labels and in this guide. This information alerts you to potential hazards that could hurt you or others. It is not possible to warn you about all potential hazards associated with this product, you must use your own good judgment.

CARELESS INSTALLATION AND OPERATION CAN RESULT IN SERIOUS INJURY OR EQUIPMENT DAMAGE. READ AND UNDERSTAND ALL SAFETY PRECAUTIONS AND OPERATING INSTRUCTIONS BEFORE INSTALLING AND OPERATING THIS PRODUCT.

This guide identifies potential hazards and has important safety messages that help you and others avoid personal injury or death. WARNING and CAUTION are signal words that identify the level of hazard. These signal words mean:

▲WARNING signals a hazard that could cause serious injury or death, if you do not follow recommendations. ▲CAUTION signals a hazard that may cause minor to moderate injury, if you do not follow recommendations.

This guide uses NOTICE to call attention to important mechanical information, and Note: to emphasize general information worthy of special attention.

▲ WARNING

Impact and Moving Parts Entanglement Hazard

FAILURE TO OBSERVE THESE INSTRUCTIONS COULD LEAD TO SEVERE INJURY OR DEATH

- Always use extreme caution when drilling on any vehicle. Make sure that all fuel lines, brake lines, electrical wires, and other objects are not punctured or damaged when / if drilling on the vehicle. Thoroughly inspect the area to be drilled (on both sides of material) prior to drilling, and relocate any objects that may be damaged. Failure to inspect the area to be drilled may result in vehicle damage, electrical shock, fire or personal injury.
- Always wear safety glasses when installing this kit. A drilling operation will cause flying metal chips. Flying chips can cause eye injury.
- Always use extreme caution when cutting and trimming during fitting.
- Always remove jewelry and wear eye protection.
- Never lean over battery while making connections.
- Never route electrical cables:
 - Across any sharp edges.
 - Through or near moving parts.
 - Near parts that become hot.
- Always insulate and protect all exposed wiring and electrical terminals.
- Always install terminal boots as directed in installation instructions.
- Always use appropriate and adequate care in lifting components into place.
- Always insure components will remain secure during installation and operation.
- Always tighten all nuts and bolts securely, per the installation and operation.
- Always perform regular inspections and maintenance on the winch, winch mount and related hardware.
- Never ever operate this WARN product with damaged or missing parts.

Read installation and operating instructions thoroughly.

WARN INDUSTRIES, INC. 12900 S.E. Capps Road,
Clackamas, OR USA 97015-8903, 1-503-722-1200, FAX: 1-503-722-3000
Customer Service: 1-800-543-9276
Dealer Locator Service: 1-800-910-1122
International Fax: 1-503-722-3005

⚠ CAUTION

Moving Parts Entanglement Hazard

FAILURE TO OBSERVE THESE INSTRUCTIONS COULD LEAD TO MINOR OR MODERATE INJURY

- Always take time to fully read and understand the installation and Operations Guide included with this product.
- Never operate this product if you are under 16 years of age.
- Never operate this product when under the influence of drugs, alcohol or medications.

Read installation and operating instructions thoroughly.

NOTICE

Equipment Damage

- Always refer to the Installation and Specification Guide, supplied in the winch kit, for all wiring schematics and specific details on how to wire this WARN product to your vehicle.

Read installation and operating instructions thoroughly.

NOTES

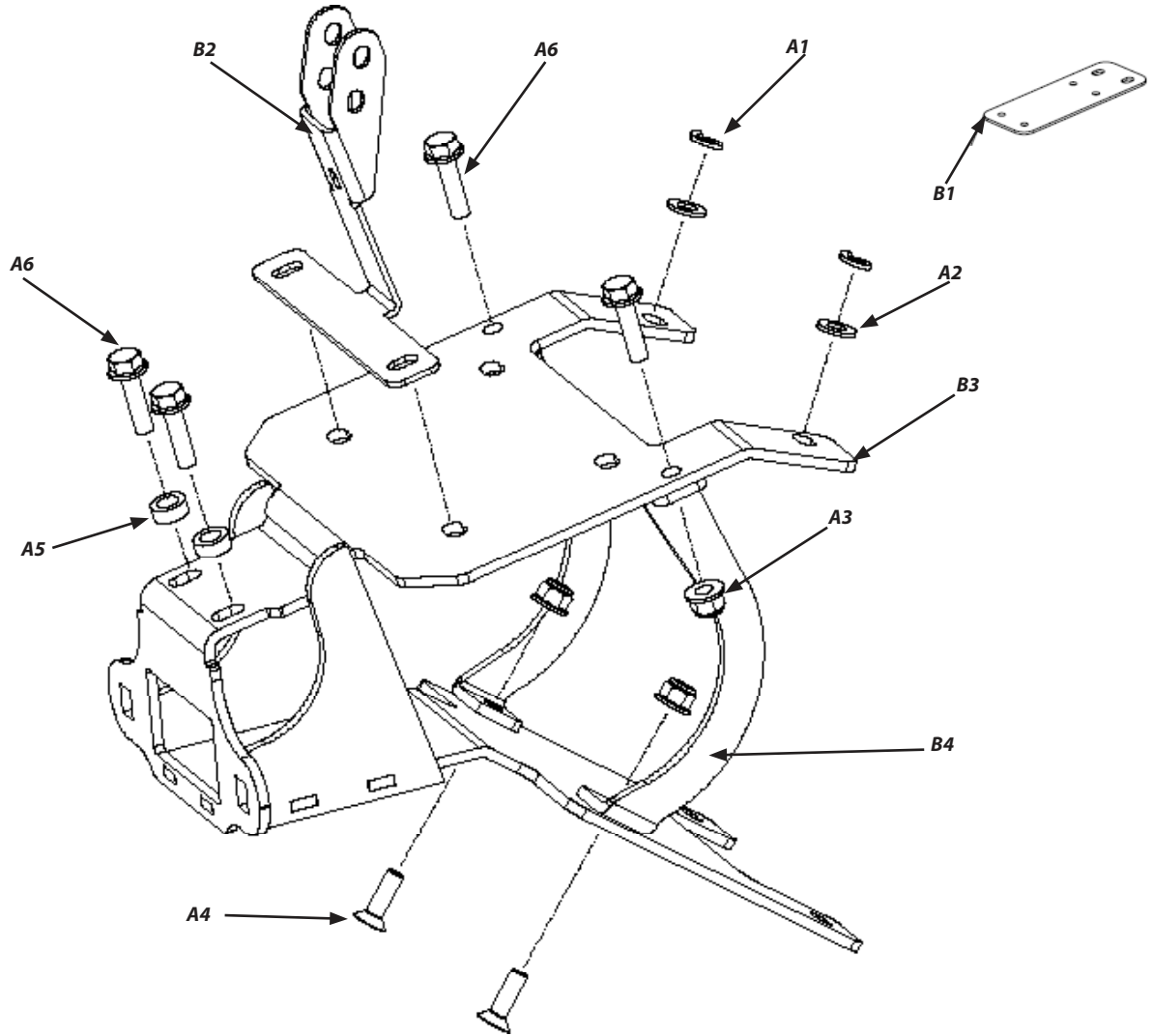
BEFORE YOU BEGIN

TABLE OF CONTENTS

Parts List.....page 3
 Tools Required.....page 3
 Torque Specifications.....page 3
 Installation page 4-11
 Maintenance/Care..... page 11

PARTS LIST

| Ref. | Qty | Part Number | Ref. | Qty | Part Number |
|------|-----|--|------|-----|-------------------|
| A1 | 2 | M8 Lock Washer | B1 | 1 | Contactator Plate |
| A2 | 2 | 5/16 Washer | B2 | 1 | Upper Bracket |
| A3 | 4 | M8-1.25 Flange Hex Nut | B3 | 1 | Winch Mount |
| A4 | 2 | M8-1.25 x 25mm Flat Hex Head Capscrew | B4 | 2 | Gusset |
| A5 | 2 | Spacer | | | |
| A6 | 4 | M8X1.25 x 30 Flange Hex Head Capscrew | | | |
| A7 | 4 | M8x1.25 x 25 Flange Hex Head Capscrew <i>(not shown)</i> | | | |
| A8 | 2 | M8x1.25 x 20 Flange Hex Head Capscrew <i>(not shown)</i> | | | |



TOOLS REQUIRED

- 13mm, 10mm, 17mm socket Wrench
- 13mm, 10mm, 17mm Standard Wrench
- Torx Set
- Short extensions for all socket wrenches

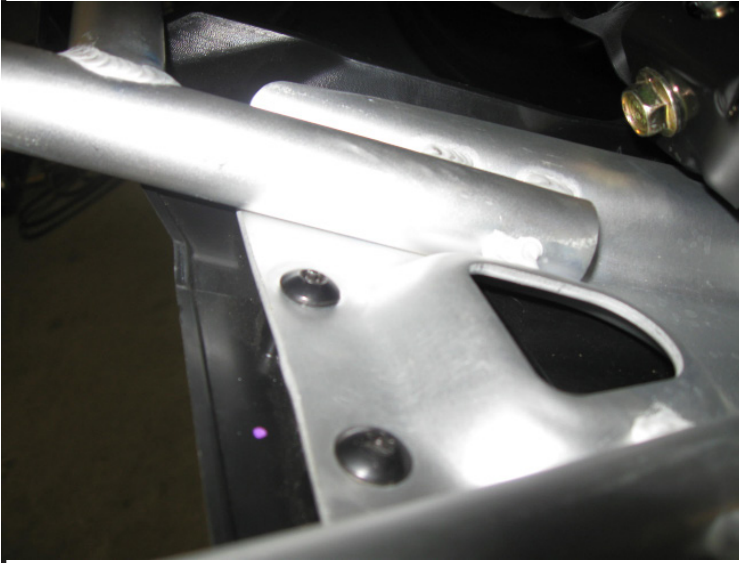
TORQUE SPECIFICATIONS

Please use the recommended torque specifications when assembling this product unless otherwise specified in the instructions.

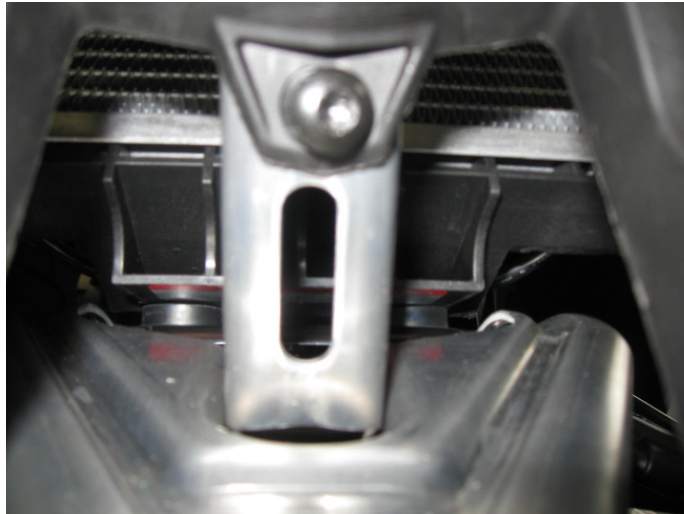
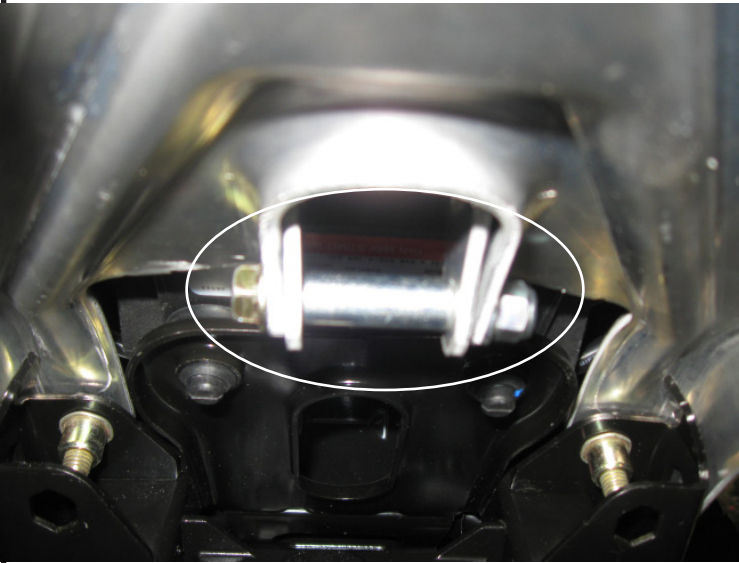
| | | |
|------|------|------------------------|
| 1/4 | 6mm | 8 lb. ft. (10.8 N-m) |
| 5/16 | 8mm | 17 lb. ft. (23.0 N-m) |
| 3/8 | 10mm | 30 lb. ft. (40.7 N-m) |
| 7/16 | 11mm | 50 lb. ft. (67.8 N-m) |
| 1/2 | 13mm | 75 lb. ft. (101.7 N-m) |

INSTALLATION INSTRUCTIONS

1. Remove the plastic skid plate by removing the outside bottom and inside top bolts.

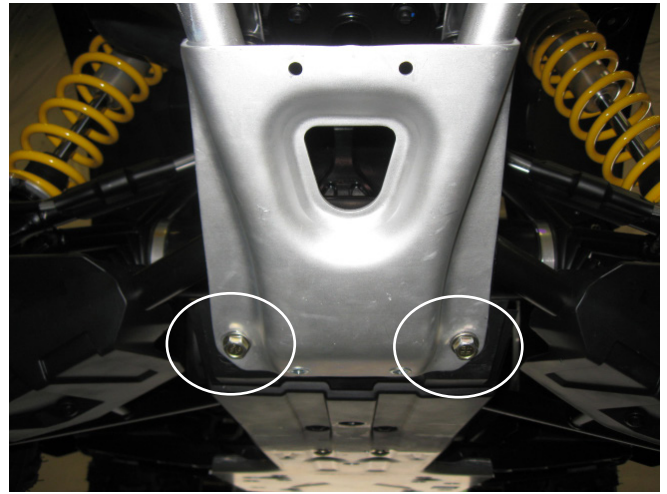


2. Uninstall the upper bracket by removing the three long bolts and short bolt shown.



INSTALLATION INSTRUCTIONS

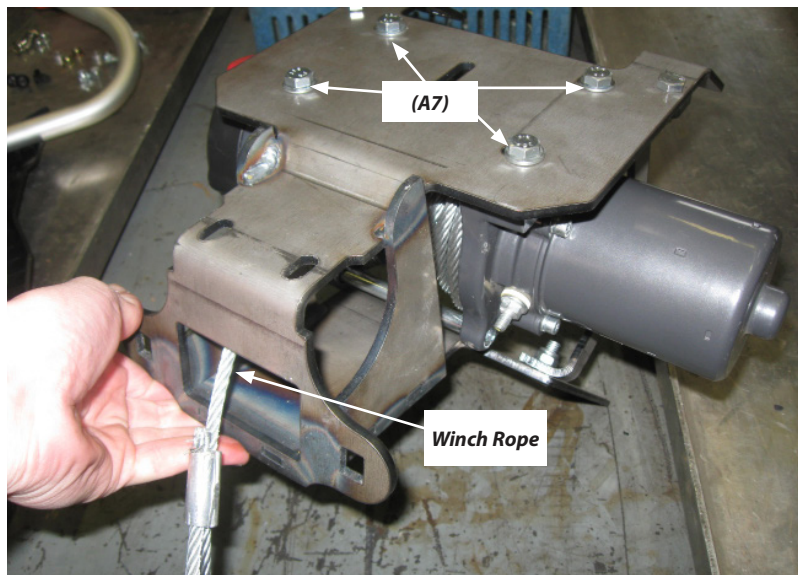
3. Uninstall the aluminum bumper by removing the two lower mount bolts and the front two bolts.



4. Remove the top two bolts to uninstall the top bumper bracket.



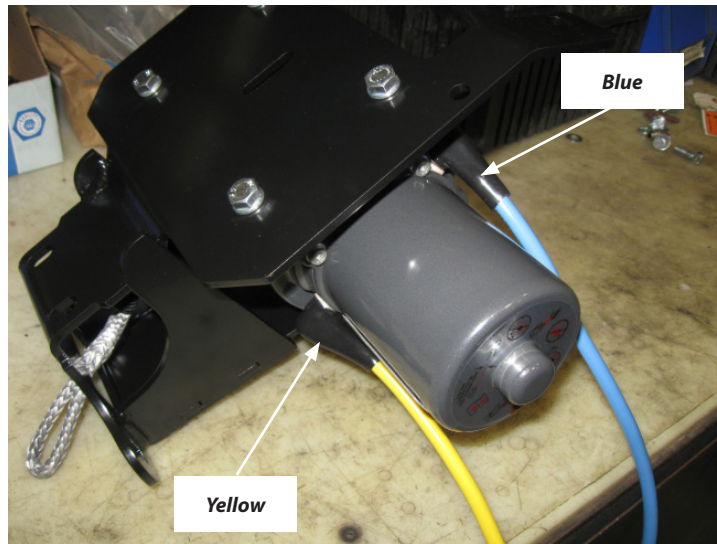
5. Mount the winch using four M8 x 1.25 x 25mm bolts (A7) supplied in this kit and lock washers supplied in winch kit.
6. Pull the winch rope through the front window of the winch mount.



INSTALLATION INSTRUCTIONS

7. Install the blue and yellow contactor wires as shown.

Note: The blue wire should be positioned towards the back of the winch and the yellow towards the front.



8. Install the gussets *loosely* using two M8 x 1.25 x 30mm bolts (A6) and two locking nuts (A3) on top and two countersunk bolts (A4) with two locking nuts (A3) on the bottom. After all bolts are in place, tighten all hardware to specifications on page 3.

NOTE: Review exploded view on page 3 for gusset orientation.

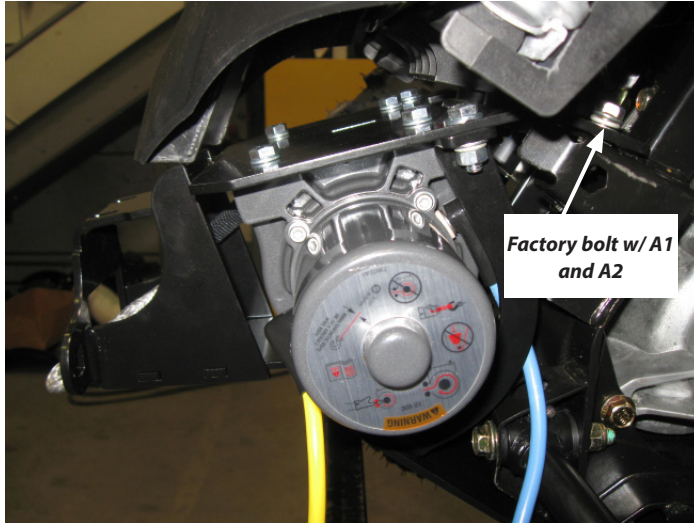


9. Position winch mount assembly on vehicle.

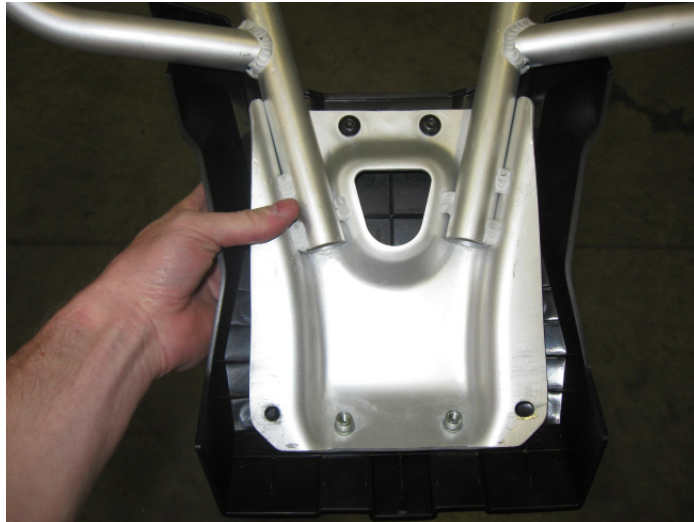


INSTALLATION INSTRUCTIONS

10. Secure the winch mount assembly using the two factory bolts and two lock washers (A1) and washers (A2) supplied in this kit. Note: Install loosely at this time to allow for adjustment. **NOTE: Review exploded view on page 3.**



11. Re-attach the front of the plastic skid plate to aluminum bumper the front two bolts only at this time, allowing the bottom of the skid plate to remain loose.



12. Slide the bumper over the front fairlead tabs.



INSTALLATION INSTRUCTIONS

13. Attach the upper part of the bumper loosely by installing the remaining two M8-1.25 x 30 long bolts (A6) and spacers (A5) with the factory nuts.



14. Loosely install the lower factory bumper mounting bolts with nuts.



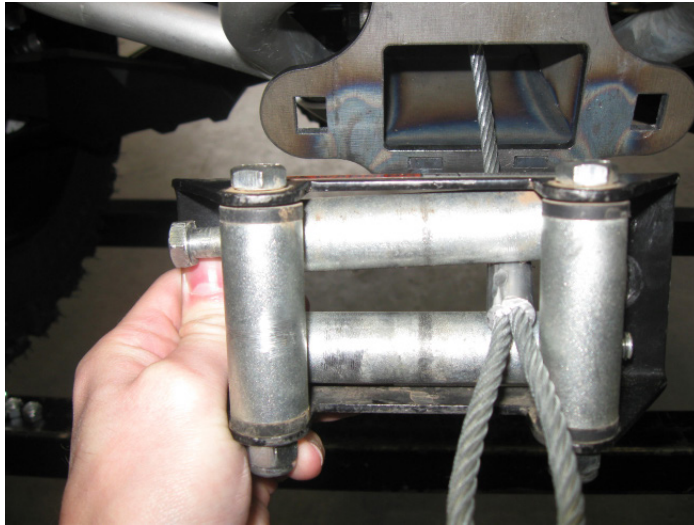
15. Tighten all bumper hardware now.

16. Install the bottom skid plate bolts to finish mounting the plastic skid plate.



INSTALLATION INSTRUCTIONS

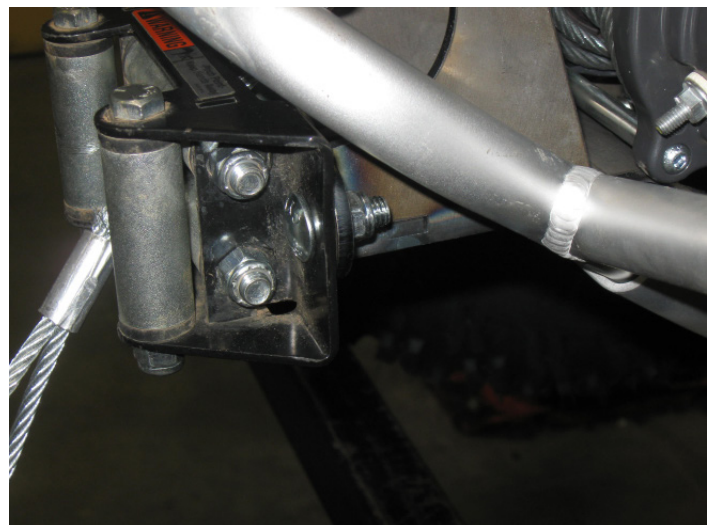
17. Loosen the top roller of the fairlead to allow the wire/synthetic rope through.



18. Tighten the top roller down after the loop is through.



19. Mount the fairlead to the front tabs using the fairlead hardware given.



INSTALLATION INSTRUCTIONS

20. Mount the upper bracket using the manufacturer's hardware.

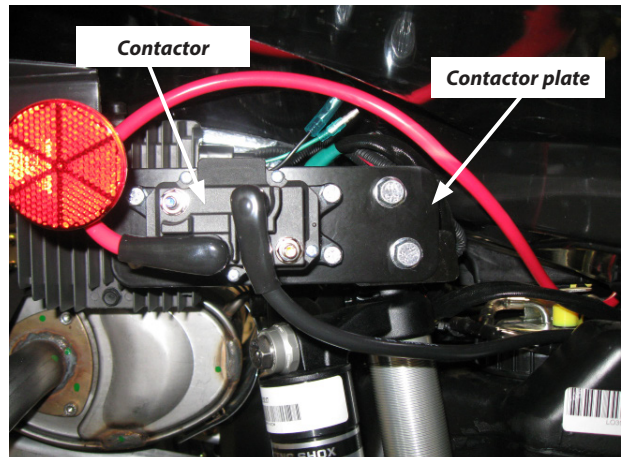
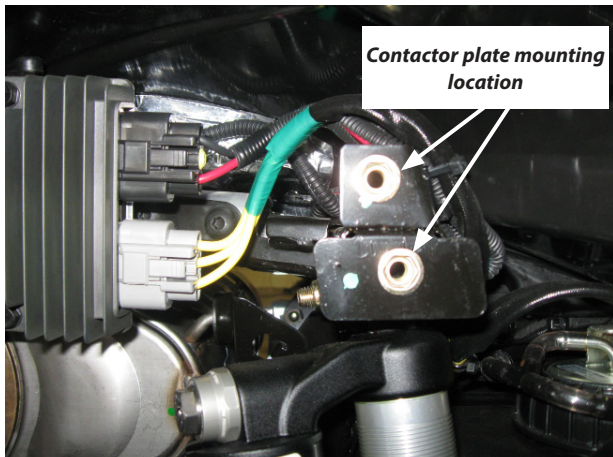


- 21. Secure the lower tab and the winch by installing the remaining front two M8 bolts, found in winch kit.
- 22. Tighten all winch mounting, bumper and skid plate hardware to torque specifications on page 3.



Contactor installation and wiring

- 1. Mount the contactor to the contactor plate (B1) and attach the plate mounting location using the two M8 bolts (A8) provided. Attach the red and black wires to the coordinating color marked contactor terminal, using hardware with contactor.



INSTALLATION INSTRUCTIONS

2. Route the blue and yellow wires from the winch to the color coded terminals on the contactor and connect using hardware in winch kit.
3. Remove the seat and route the red and black wires to the battery under the seat as shown.



MAINTENANCE / CARE

- Inspect all metal parts on the plow, plow mount, and related hardware prior to each use. Replace all parts that appears rusted or deformed.
- Inspect all nuts and bolts on the plow, plow mount, and related hardware prior to each use. Tighten all nuts and bolts that appear to be loose. Stripped, fractured, or bent bolts or nuts must be replaced.
- Check all cables prior to use. Replace cables that are worn or frayed.
- Check all moving and rotating parts. Remove debris that may inhibit the part from moving freely.

CARELESS INSTALLATION AND OPERATION CAN RESULT IN SERIOUS INJURY OR EQUIPMENT DAMAGE. READ AND UNDERSTAND ALL SAFETY PRECAUTIONS AND OPERATING INSTRUCTIONS BEFORE INSTALLING AND OPERATING THIS PRODUCT.

