



MADE FOR FIRST. BUILT TO LAST.

DISCLAIMER:

PRODUCTS MADE BY L AND W FAB AND MACHINE INC. ARE INTENDED TO FIT YOUR STOCK UTV UNLESS OTHERWISE SPECIFIED. INSTALLING, MODIFYING, OR REMOVING ANY COMPONENTS (FACTORY OR AFTERMARKET) NOT SUPPORTED BY L AND W AND THE INSTRUCTIONS HEREIN WILL VOID YOUR WARRANTY. FOR MORE INFORMATION ON INSTALLATION, WARRANTY, OR PRODUCT USE PLEASE CALL US AT (770) 445-9778

2020 POLARIS RZR PRO XP WINCH MOUNT

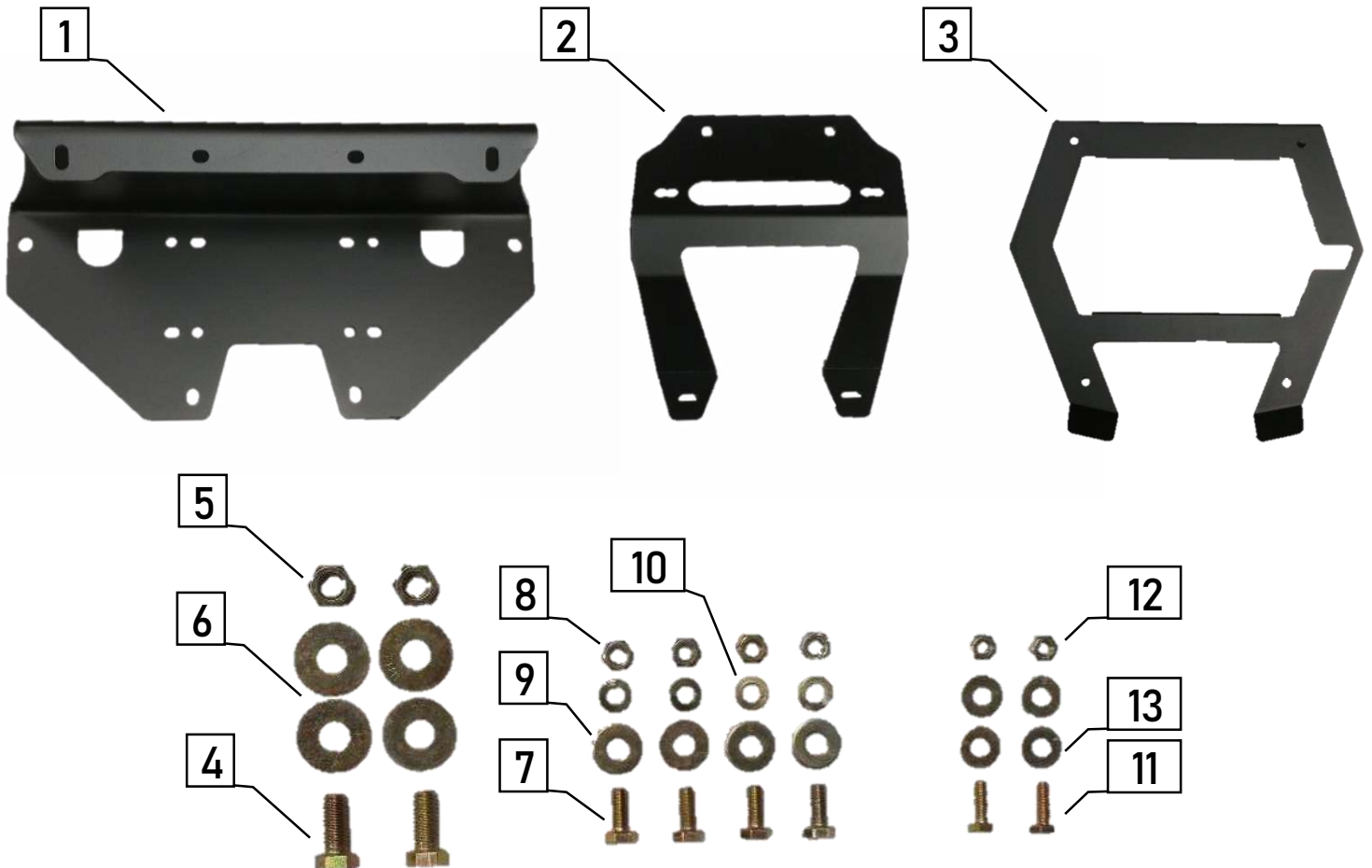
*Compatible with $6\frac{5}{8}$ in & 6 in fairleads



INSTALLATION MANUAL

PARTS LIST:

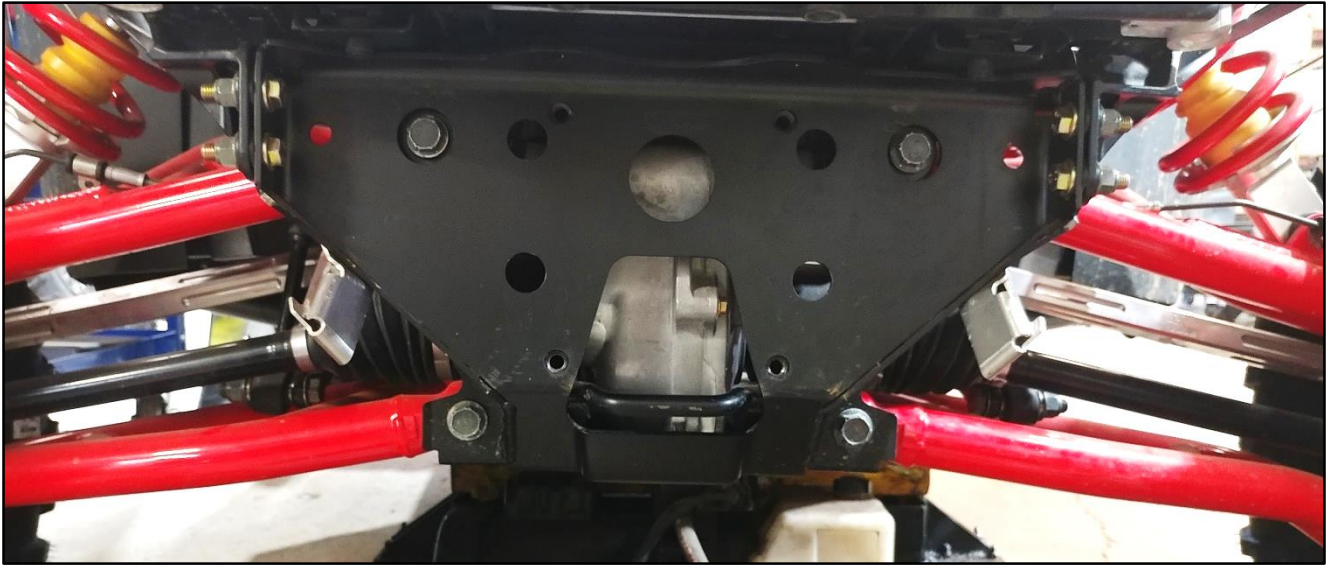
Item #	Description	Qty.
1	Winch Mounting Plate	1
2	Fairlead Mounting Plate	1
3	Front Facia Plate	1
4	7/16-14 x 1 Bolt	2
5	7/16-14 x 1 Nut	2
6	7/16 Flat Washer	4
7	5/16-18 x 3/4in Bolt	4
8	5/16-18 x 3/4in Nut	4
9	5/16 Flat Washer	4
10	5/16 Lock Washer	4
11	1/4-20 x 3/4in Bolt	2
12	1/4-20 x 3/4in Nut	2
13	1/4 Flat Washer	4



INSTALLATION:

STEP 1: Lay out the supplied parts and hardware as shown on the previous page's part list. Remove the grill, plastic cover below it, bumper bar and any other installed accessories on the bumper until your workspace resembles *figure 1*. Save all factory hardware since a majority of it will be reused in the installation of the winch mount.

Figure 1



STEP 2: Mount the winch onto the Winch Plate using the hardware supplied with it. The correct orientation of the plate would have the bent leg facing the front of the machine and the electrical fittings of the winch on the passenger side of the vehicle. Use *figure 2* to verify the fitment of the winch to the winch plate.

Figure 2



STEP 3: Place the winch and winch plate on the mounting plate located on the frame. Use the 7/16 hardware secured loosely to hold the winch assembly in place. Use *figures 3 & 4* to identify the holes for the mounting hardware and proper placement of the winch assembly.

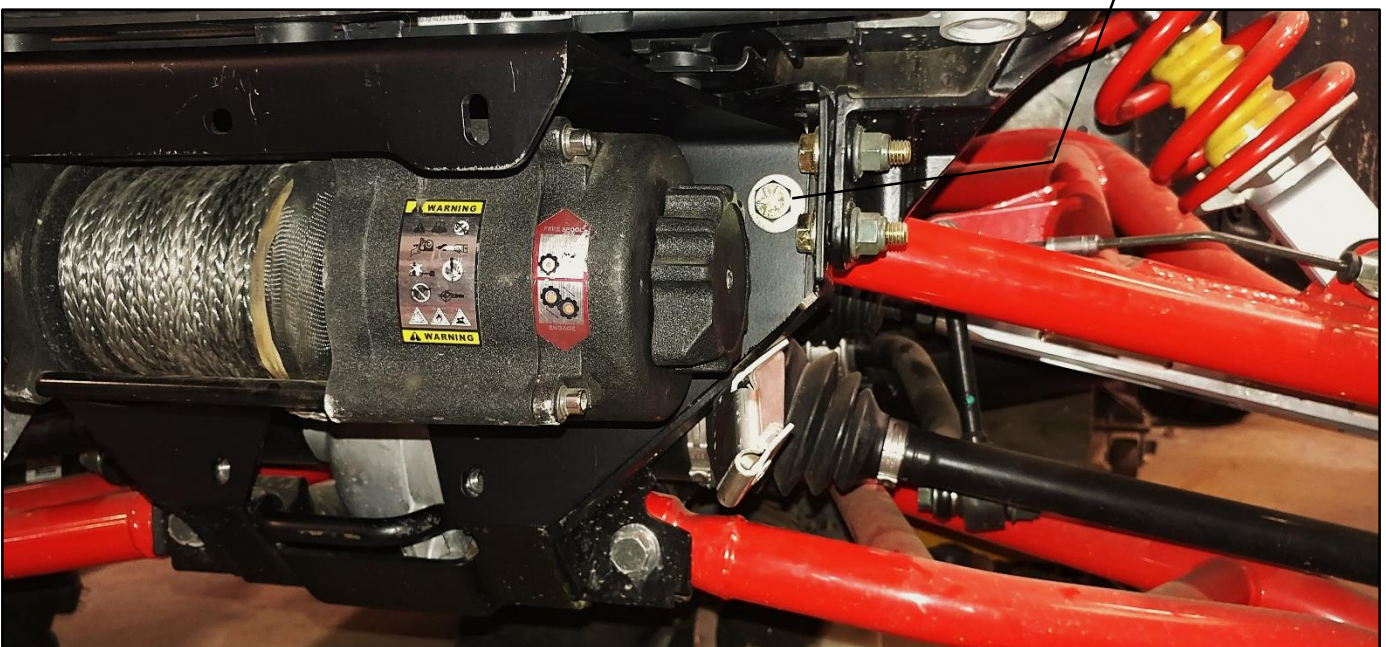
NOTE: ONLY SECURE THE HARDWARE LOOSELY SO YOU CAN ALIGN THE ASSEMBLY LATER IN THE INSTALLATION. DO NOT TIGHTEN COMPLETELY!

Figure 3



Mounting Hole

Figure 4



Mounting Hole

STEP 4: Align the bumper bar's mounting holes with those found on the winch plate. Use two of the supplied 5/16 hardware sets in the two holes located on the outside of the bent leg of the winch plate in order to secure the bumper bar as shown in *figure 5*.

NOTE: ONLY SECURE THE HARDWARE LOOSELY SO YOU CAN ALIGN THE ASSEMBLY LATER IN THE INSTALLATION. DO NOT TIGHTEN COMPLETELY!

Next discard the factory push pins and use the supplied 1/4 hardware to secure the front grill housing to the bumper bar as shown in *figure 6*. This hardware can be aligned and tightened completely at this time.

Figure 5



5/16 Mounting
Holes

1/4 Mounting
Holes

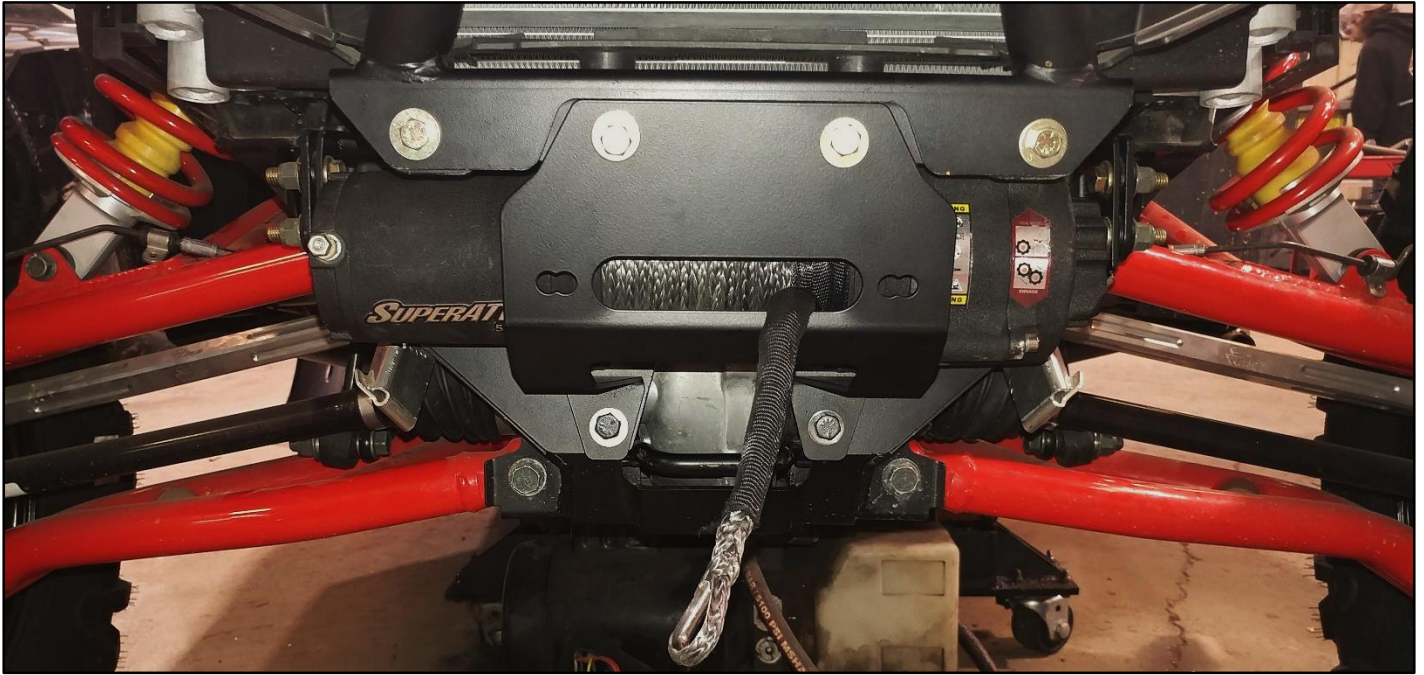
Figure 5



STEP 5: Install the fairlead mounting plate using the 5/16 hardware on the top holes and the factory supplied 10mm bolts to secure the fairlead plate to the winch plate. For placement and alignment, use *figure 6* as a reference. Ensure that your winch cable is protruding out of the fairlead plates front opening as shown.

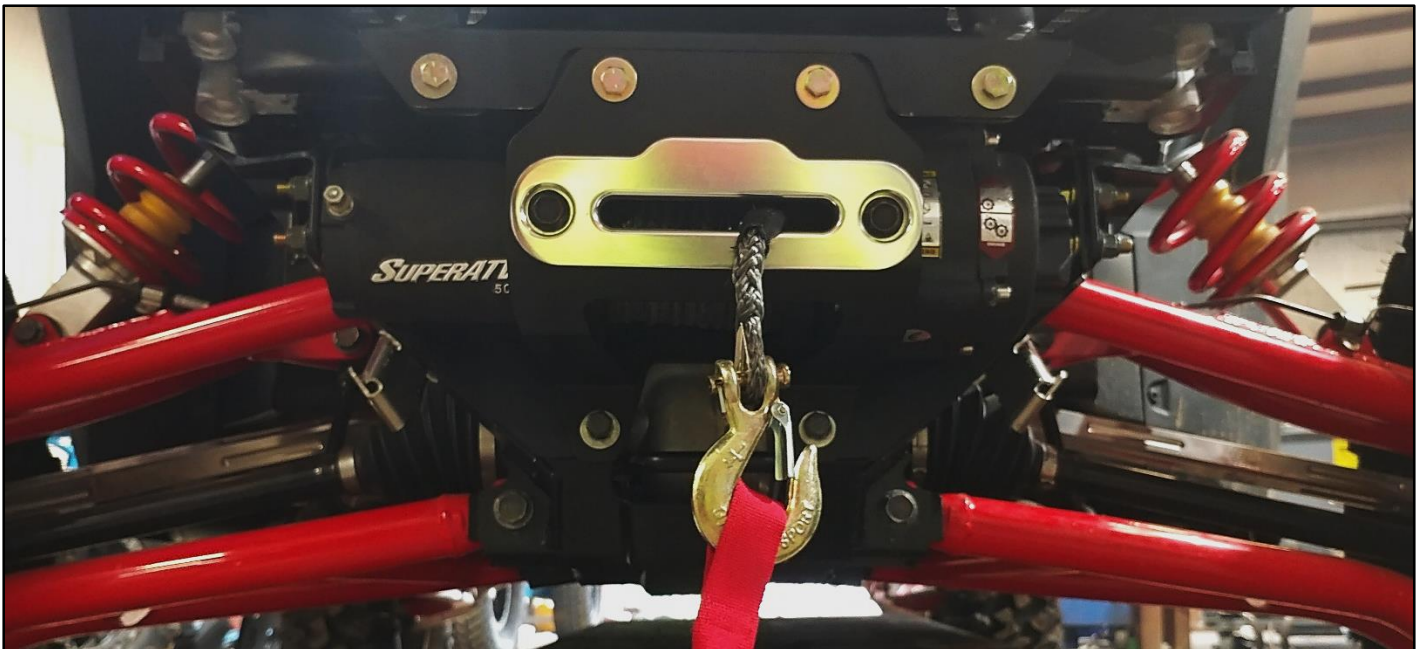
NOTE: ONLY SECURE THE HARDWARE LOOSELY SO YOU CAN ALIGN THE ASSEMBLY LATER IN THE INSTALLATION. DO NOT TIGHTEN COMPLETELY!

Figure 6



STEP 6: Install the fairlead using its included hardware. Ensure the winch cable is pulled through the fairlead and isn't snagging on any components behind the fairlead. Use *figure 7* as a reference for the completion of this step.

Figure 7



STEP 7: With all bolts started and everything finally in place and aligned, start tightening in the following order:

2x 7/16 bolts supporting winch plate. A 5/8 wrench and 11/16 wrench will be used here.

4x 5/16 bolts on the top of the winch plate assembly. Two ½ wrenches can accomplish this.

Lastly, tighten the 10mm bolts on the bottom of the fairlead plate.

Review the components and ensure all hardware is tightened down and secure.

STEP 8: Install the front bumper plastics using the factory hardware and replace the factory facia plate with the supplied one. The new facia plate utilizes the four factory T40 screws. Use *figure 8* to verify the completion of your installation.

Figure 8



TEMPLE, GA 30179



(770) 445-9778

THANK YOU FOR CHOOSING L&W FAB AND MACHINE INC!