



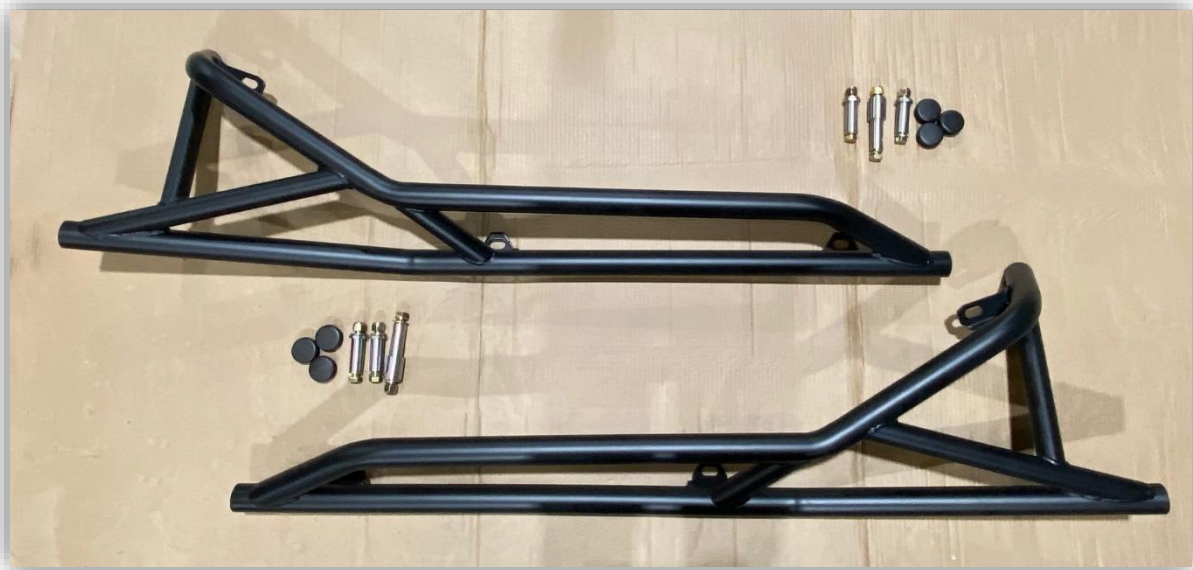
Made for first. Built to last.

DISCLAIMER:

PRODUCTS MADE BY L AND W FAB AND MACHINE INC. ARE INTENDED TO FIT YOUR STOCK UTV UNLESS OTHERWISE SPECIFIED. INSTALLING, MODIFYING, OR REMOVING ANY COMPONENTS (FACTORY OR AFTERMARKET) NOT SUPPORTED BY L AND W AND THE INSTRUCTIONS HEREIN WILL VOID YOUR WARRANTY. FOR MORE INFORMATION ON INSTALLATION, WARRANTY, OR PRODUCT USE PLEASE CALL US AT (770) 445-9778

Polaris RZR PRO XP 2 seat Tree Kickers

Fitment: 2019-CURRENT PRO XP 2 SEAT



INSTALLATION MANUAL

Parts List:

Item #	Part #	Description	Qty.
1	N/A	Tree Kicker	2
2	N/A	Plastic Pipe Cap	6
3	N/A	3/4x1 hex bolt	6
4	N/A	1/2in Nylock Nut	6
5	N/A	1/2in Washer	12
6	N/A	1/2in lock washer	6
7	N/A	FRONT MOUNT PIN	4
8	N/A	REAR MOUNT PIN	2

Tools:

Tool	Qty.
10mm socket	1
3/4 wrench	1
Vise grips/adjustable wrench	1
Rubber Mallet	1

Installation:

STEP 1:

Lay out the supplied parts and hardware shown on the parts list. Begin by installing the plastic pipe caps on the SIX open ends on your tree kickers. These can be difficult to get in by hand, so our recommendation is to push them into the pipe end until the first ring is pushed in then quickly grab a rubber mallet and gently tap the cap in until it is flush.

STEP 2:

Using a 10mm socket, remove the factory skid plate. It is necessary to remove skid plate to access back side of frame for installing mounting pins. Figure 1.

Figure 1



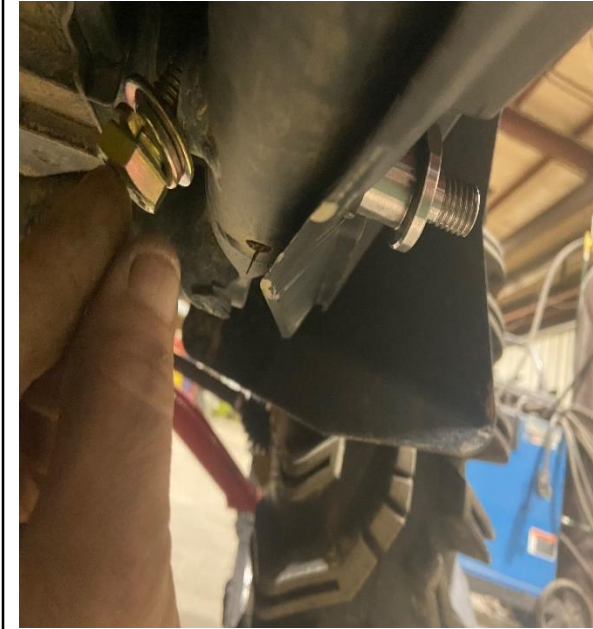
STEP 3:

Refer to figures 2-5 for installation of the mount pins. The rear pins have the longer shoulder.

Figure 2



Figure 3



STEP 5:

Once you have mount pins stuck through the frame, secure them from back side using a 3/4x1 bolt, lock nut, and flat washer. It is easiest to use vise grips to hold opposite side from spinning while tightening the bolt, but the heads have flats so you can use an adjustable wrench. Make sure to tighten all the way down

Figure 4

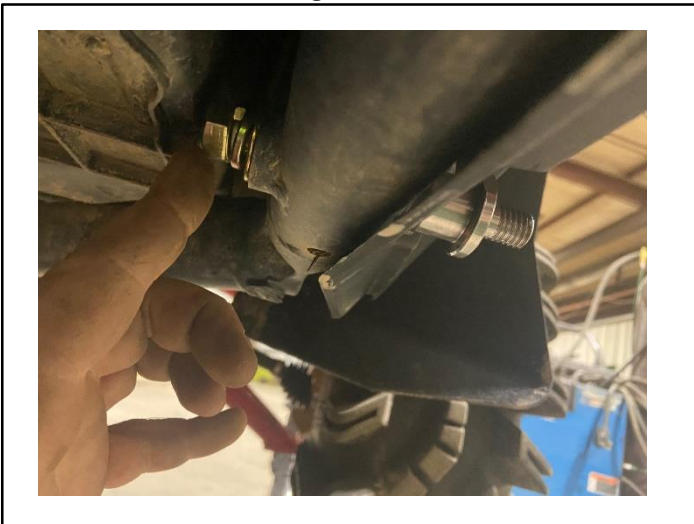
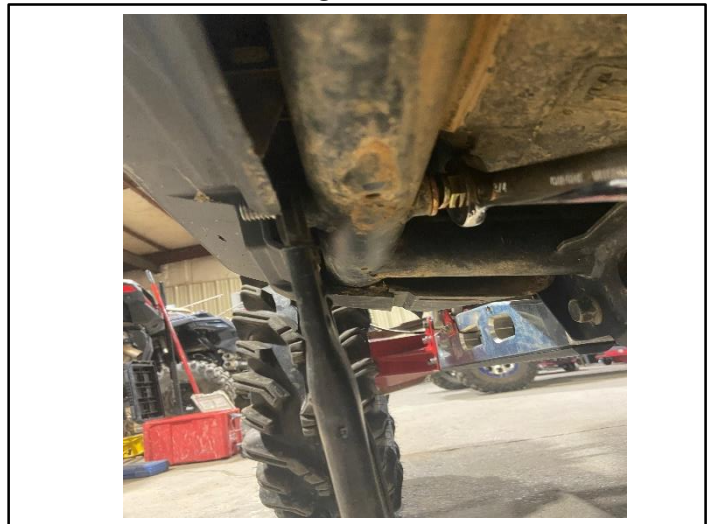


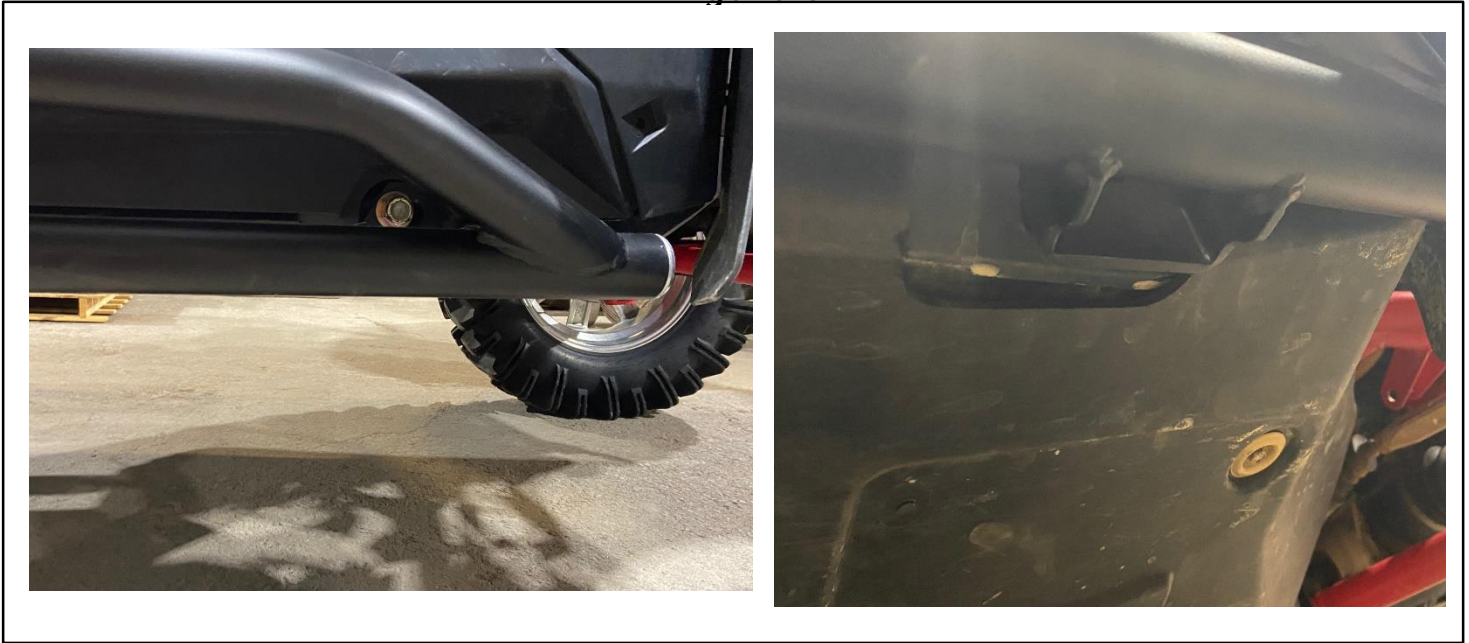
Figure 5



STEP 6:

Install your new tree kicker onto the mount pins and secure with a flat washer followed by the lock nut. You can tighten completely at this time

Figure 6



Step 7:

Refer to figure 6 for visual of how the factory skid plate must be notched for clearance of mount. Once cut for clearance, install skid plate back using the 10mm bolts you removed.



THANK YOU FOR CHOOSING L&W FAB!