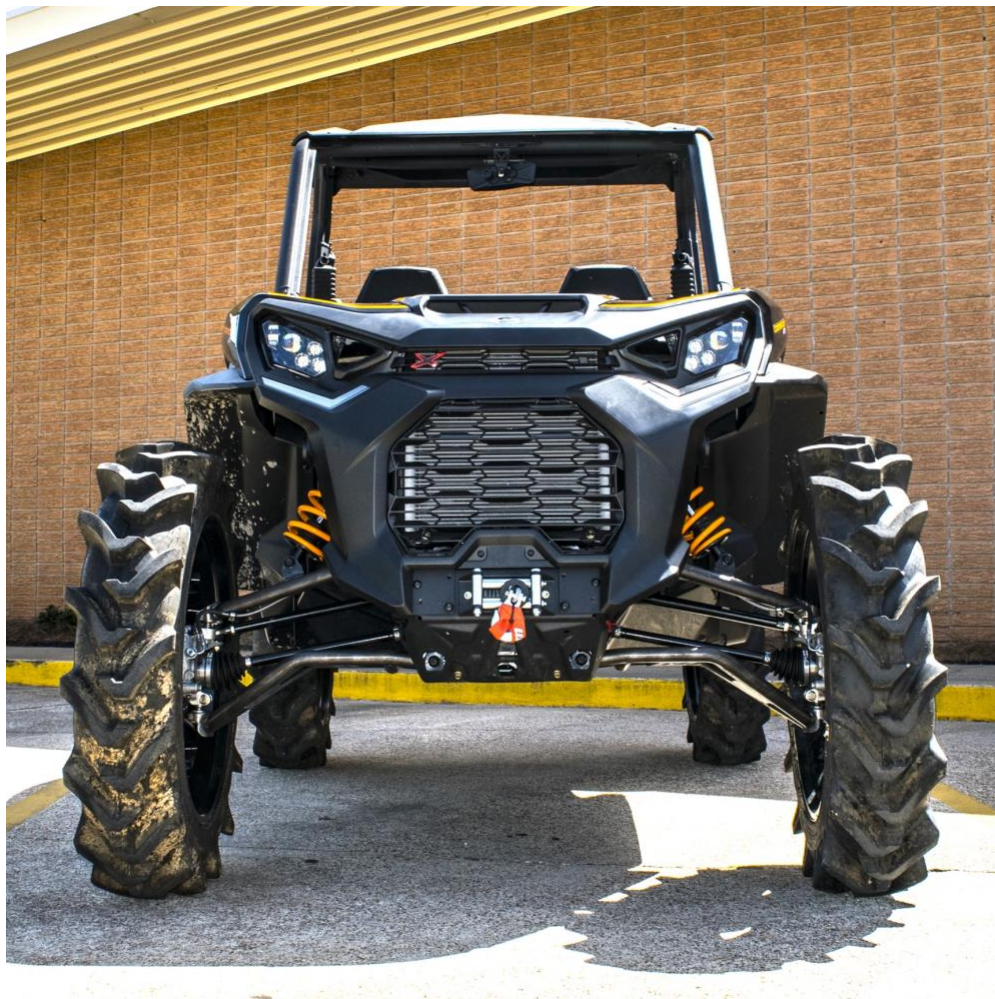




## 2021+ Can-Am Commander XT / XTP 2" Forward A-Arm Kit # S3225



# INSTALLATION INSTRUCTIONS 2021+ Can-Am Commander 2" Forward A-Arm Kit



## 2021+ Can-Am Commander XT / XTP

### 2" Forward A-Arm Kit # S3225

## PARTS LIST

PART #	DESCRIPTION	QTY
	Upper Driver Side A-Arm	1
	Upper Passenger Side A-Arm	1
	Lower Driver Side A-Arm	1
	Lower Passenger Side A-Arm	1
29678	Steering Stop	2
	Zip Tie	2
S3120	HD Bushing	16
706202257	Pivot Tube	8

#### Tools Needed:

- Ratchet (3/8" or 1/2")
- Drill
- 3/16" Drill Bit
- 6" Extension (3/8" or 1/2")
- 10mm Socket
- 15mm Socket and Wrench
- 18mm Socket and Wrench
- 19mm Socket and Wrench
- 30mm or 1 3/16" Socket
- Flathead Screwdriver
- Dead Blow Hammer (Optional)
- Needle Nose Pliers or Diagonal Cutters

#### DISASSEMBLY:

- 1.) Place Commander in park (P) on a flat level surface. Elevate machine and support with suitable jack stands.
- 2.) Remove front tires.
- 3.) Remove 6mm (10mm head) bolt holding brake line on upper a-arm. (See Image 1)
- 4.) Drill out rivet securing brake line on upper a-arm. (See Image 1)



## 2021+ Can-Am Commander XT / XTP

### 2" Forward A-Arm Kit # S3225

- 5.) Remove the two brake caliper bolts with a 15mm socket. Remove caliper from rotor and secure the caliper so that there is no tension on the brake line. (*Pro Tip : Use a zip tie to avoid putting tension on the brake line.*) (See Images 2-3)
- 6.) Remove outer tie rod bolt, using 15mm socket. (See Image 4)
- 7.) Remove cotter pin from front axles These can be reused if undamaged during removal. If damaged, replace with new. (*Pro Tip : Needle nose pliers or diagonal cutters work well.*)
- 8.) With a 30mm socket (or 1 3/16"), remove front axle castle nut. (*Pro Tip : 1/2" impact works well. If you don't have one, a 1/2" breaker bar can be used. You will need an assistant to hold the brakes, taking care that the Commander is on jack stands.*) (See Image 5)
- 9.) Remove hub/rotor assembly and set aside. (See Image 6)
- 10.) Remove lower shock bolt, using 18mm socket and wrench. (*Pro Tip : Secure shock out of the way using a bungee or ratchet strap.*) (See Image 7)
- 11.) Using an 18mm socket and wrench, remove sway bar link from upper a-arm. Next, remove front sway bar by loosening two bolts securing sway bar to the frame, using an 18mm socket or wrench. (*Pro Tip : It may be easier to remove sway bar links completely from sway bar before removal.*) (See Images 8-9)
- 12.) Remove lower ball joint pinch bolt, using 18mm socket and wrench.
- 13.) Using dead blow hammer, tap lower a-arm to release ball joint from the steering knuckle.
- 14.) Remove two inner bolts securing lower a-arm to frame, using 18mm socket and wrench. Lower a-arm can now be removed.
- 15.) Remove two inner bolts securing upper a-arm to frame, using 18mm socket and wrench. Upper a-arm and steering knuckle can now be slid off outer axle splines. (See Image 10)
- 16.) Remove 19mm nut and washer from upper ball joint. (*Pro Tip : Use 6" extension and insert upward through bottom ball joint hole in knuckle to allow impact access. The upper ball joint stud is a tapered press fit into steering knuckle. Using brass hammer, tap on knuckle to release the ball joint and upper arm from the knuckle. See arrow on Image 11*) (Note : Steering knuckles are side specific and are labeled "LH" and "RH")
- 17.) **IMPORTANT** – Note direction of removal/install of ball joints!!  
If reusing OEM ball joints, remove them from OEM a-arms using a bearing press or similar. Be sure to remove ball joint retaining rings first, taking care to not damage them as they will be reused. (*Pro Tip : Using a small flat blade screwdriver, remove the (4) ball joint rubber boots to not damage them during removal/install and set aside. Use caution to not puncture the ball joint boots. Extra grease may be added to ball joints before reinstalling them.*) (See Image 12)

#### **ASSEMBLY:**

- 18.) Carefully press ball joints into S3 a-arms the same direction as OEM arms. (See Image 13)  
(*Pro Tip : An arbor press or bearing press works well for this step.*)



## 2021+ Can-Am Commander XT / XTP

### 2" Forward A-Arm Kit # S3225

- 19.) Reinstall snap rings, taking care that they are seated properly.
- 20.) Reinstall ball joint boots, taking care they are seated properly.
- 21.) Install provided HD a-arm bushings and pivot tubes into S3 a-arms. *(See Image 14) (Pro Tip : A 13mm deep socket, 6" extension and dead blow hammer works well to tap bushings and pivot tubes in.)*
- 22.) Assemble S3 upper a-arm and steering knuckle, using OEM flat washer, nut (19mm) and red thread locker. Final tighten to OEM specification. *(See Image 11.) (Pro Tip : Reference step 16 to enable impact access.)*
- 23.) Slide steering knuckle back through axle and install inner upper a-arm bolts to hang S3 upper a-arm. *(See Image 15) (Pro Tip : An assistant may be helpful for this step.)*
- 24.) Install S3 lower a-arm in frame using stock hardware. Hand tighten only. *(See Image 16)*
- 25.) Insert lower ball joint stud into steering knuckle. Reinsert stock pinch bolt and nut. Hand tighten only. *(See Image 17) (Pro Tip : Cycle the suspension manually until pinch bolt installs freely, without binding. Slight taps from a dead blow hammer on bottom of ball joint fixture may be necessary.)*
- 26.) Reinstall hub/brake rotor assembly, ensuring splines of the hub line up with splines on axle. Reinstall axle spring washer and thread on axle nut. Hand tighten only. (Note : Note orientation of spring washer. Curved side of washer should face outwards) *(See Image 18)*
- 27.) Reattach tie rod to steering knuckle, using stock hardware (10mm bolt w/15mm head). Hand tighten only. *(See Image 19)*
- 28.) Attach shock to S3 upper a-arm shock mount using stock hardware (12mm bolt w/18mm head and nut). Hand tighten only.
- 29.) Reattach brake caliper, using stock hardware. Final tighten (15mm) to OEM specifications using red thread locker. (Note : Reference Image 17 for brake line routing.)
- 30.) Final tighten all remaining bolts, using red thread locker, to OEM specifications. *(Pro Tip : Refer to service manual for OEM torque specifications.)*
- 31.) Remove OEM brake line tabs. Zip tie brake line to bottom of S3 upper a-arm, using brake line guides welded on S3 a-arm.
- 32.) Reinstall cotter pin into axles. Use new cotter pins if OEM were damaged during removal.
- 33.) Repeat on opposite side.
- 34.) See Images 19-20 for final assembly.
- 35.) Install desired wheels/tires and place Commander back onto flat ground.
- 36.) Test drive and recheck all hardware/fasteners. (Note : Front end alignment may be necessary when installation is complete.)

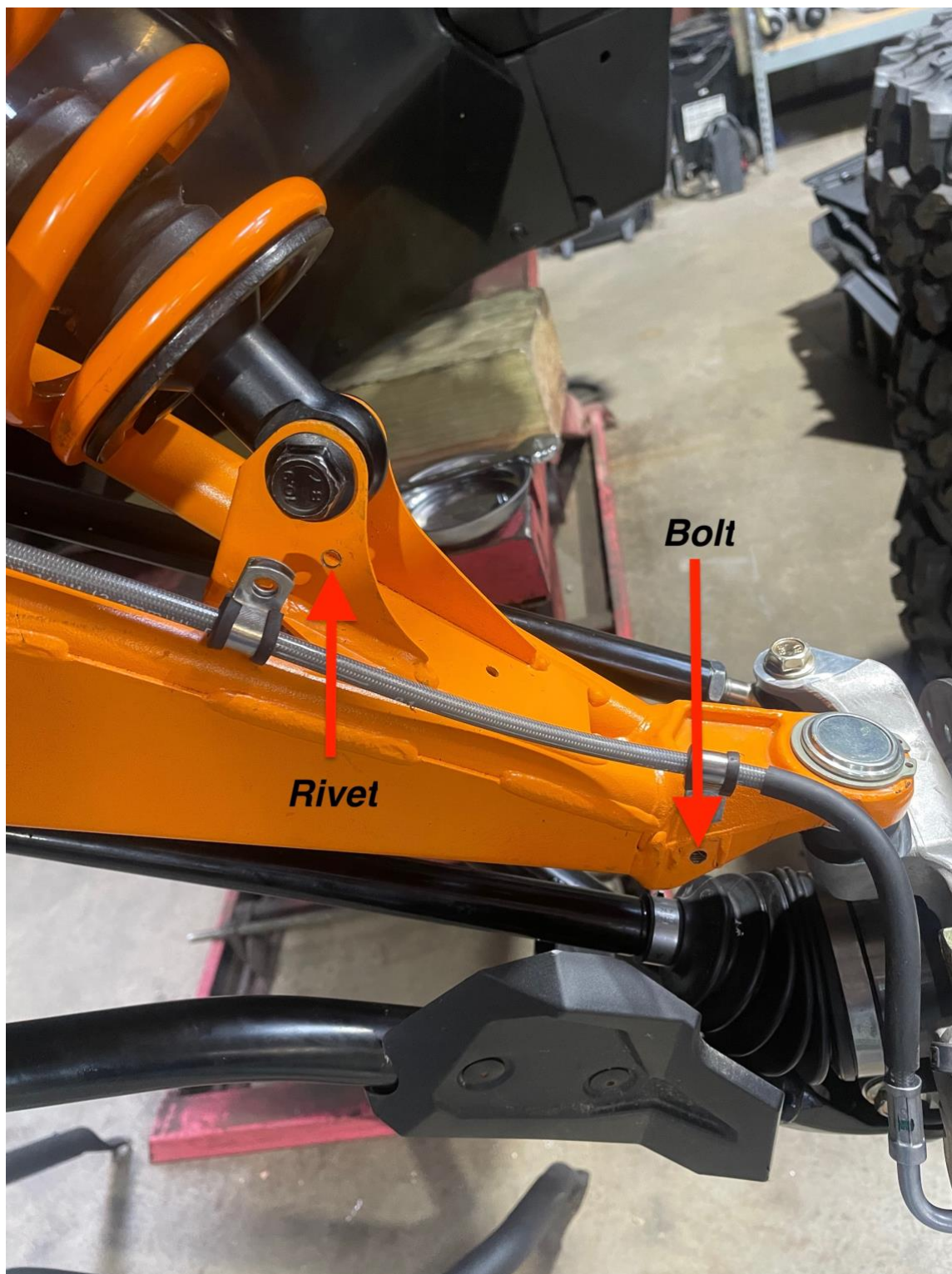
Thank you for choosing S3 Power Sports! Let us know if you have any questions! 855-221-7097





## 2021+ Can-Am Commander XT / XTP 2" Forward A-Arm Kit # S3225

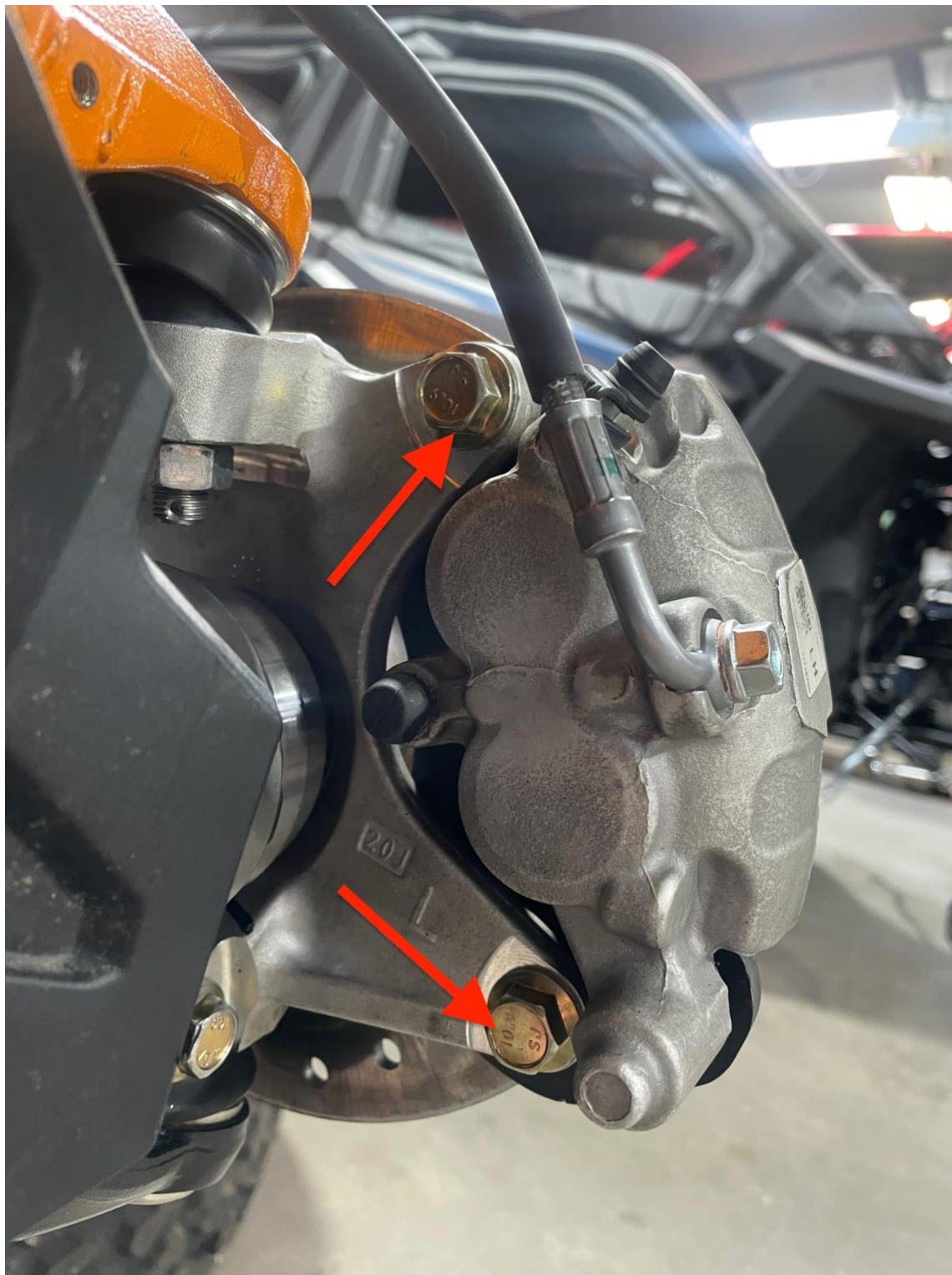
Image 1





## 2021+ Can-Am Commander XT / XTP 2" Forward A-Arm Kit # S3225

Image 2







## 2021+ Can-Am Commander XT / XTP 2" Forward A-Arm Kit # S3225

Image 3





## 2021+ Can-Am Commander XT / XTP 2" Forward A-Arm Kit # S3225

Image 4







## 2021+ Can-Am Commander XT / XTP 2" Forward A-Arm Kit # S3225

Image 5





## 2021+ Can-Am Commander XT / XTP 2" Forward A-Arm Kit # S3225

Image 6







## 2021+ Can-Am Commander XT / XTP 2" Forward A-Arm Kit # S3225

Image 7

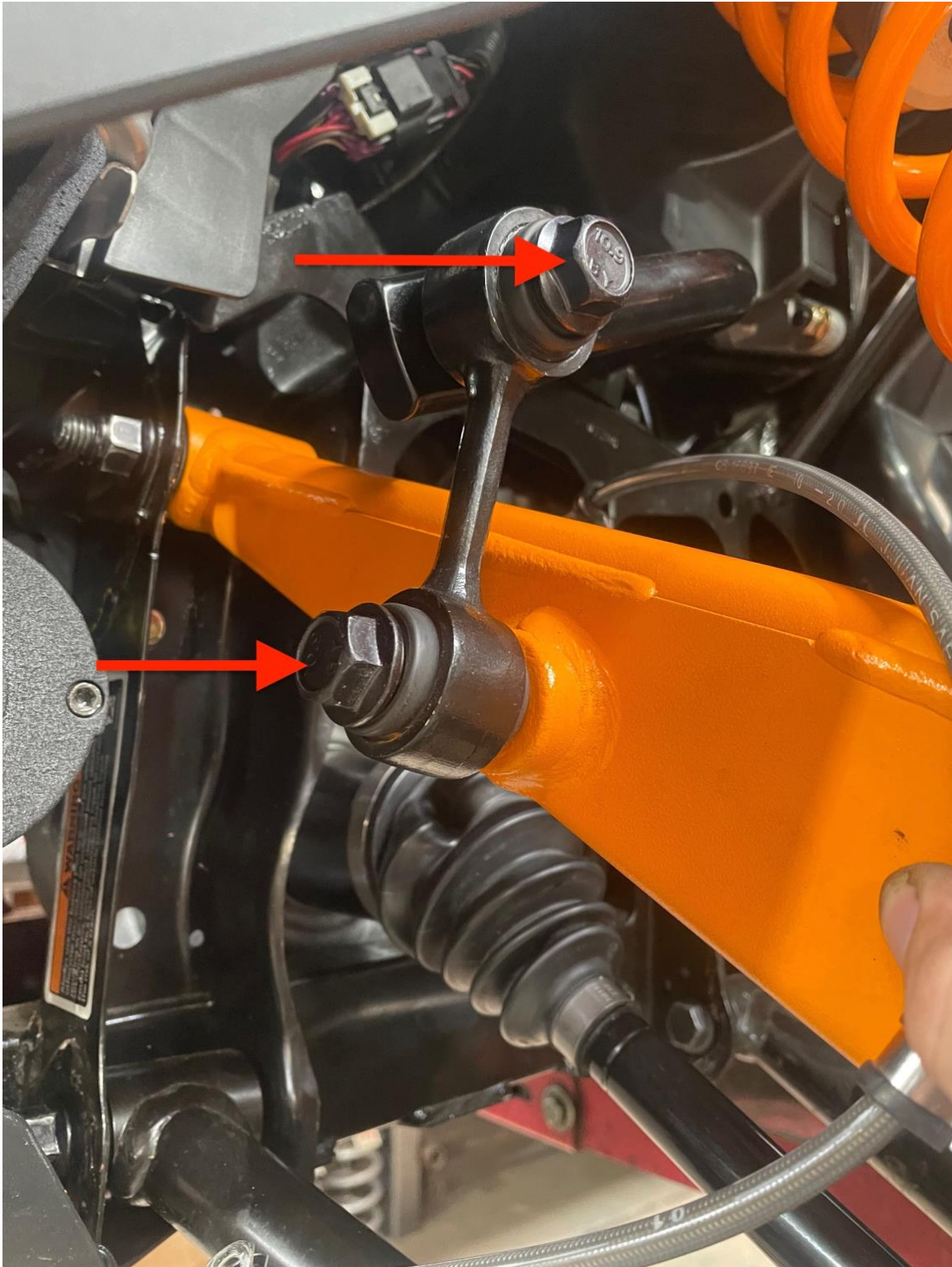






## 2021+ Can-Am Commander XT / XTP 2" Forward A-Arm Kit # S3225

Image 8





## 2021+ Can-Am Commander XT / XTP 2" Forward A-Arm Kit # S3225

Image 9







## 2021+ Can-Am Commander XT / XTP 2" Forward A-Arm Kit # S3225

Image 10







## 2021+ Can-Am Commander XT / XTP 2" Forward A-Arm Kit # S3225

Image 11







## 2021+ Can-Am Commander XT / XTP 2" Forward A-Arm Kit # S3225

Image 12







## 2021+ Can-Am Commander XT / XTP 2" Forward A-Arm Kit # S3225

Image 13

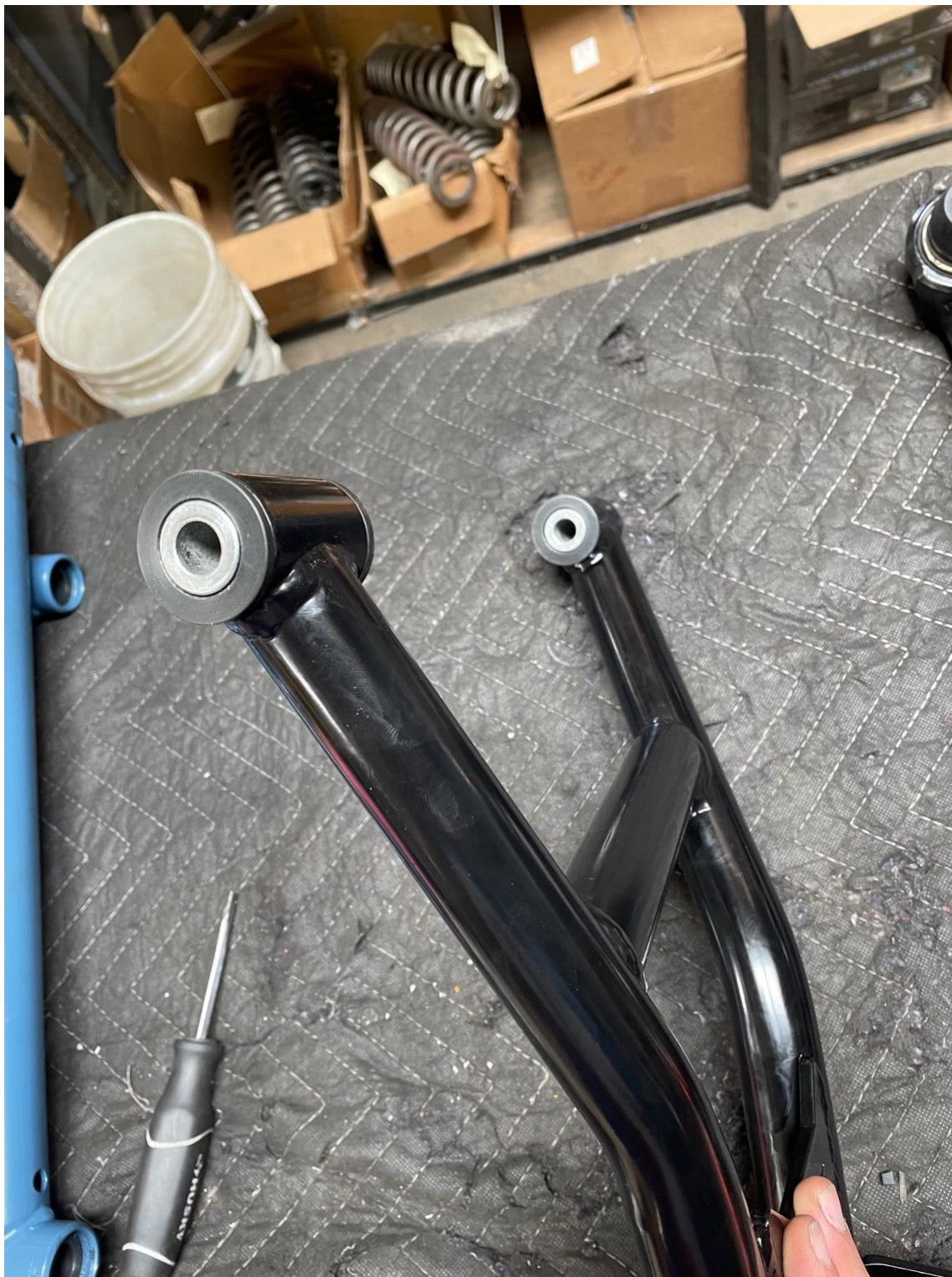






## 2021+ Can-Am Commander XT / XTP 2" Forward A-Arm Kit # S3225

Image 14







## 2021+ Can-Am Commander XT / XTP 2" Forward A-Arm Kit # S3225

Image 15





## 2021+ Can-Am Commander XT / XTP 2" Forward A-Arm Kit # S3225

Image 16







## 2021+ Can-Am Commander XT / XTP 2" Forward A-Arm Kit # S3225

Image 17





## 2021+ Can-Am Commander XT / XTP 2" Forward A-Arm Kit # S3225

Image 18







## 2021+ Can-Am Commander XT / XTP 2" Forward A-Arm Kit # S3225

Image 19







## 2021+ Can-Am Commander XT / XTP 2" Forward A-Arm Kit # S3225

Image 20

