



TRAILARMOR.COM
839 HWY 2 CORINTH, MS 38834
(662) 233-5700

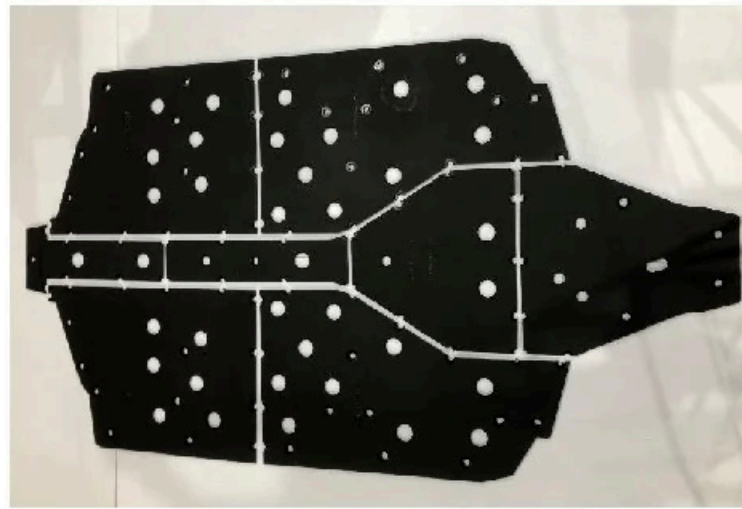
Installation Instructions

Trail Armor Polaris Ranger Crew XP 1000 Full Skids

TA012FULLSKID-PR1000XPC-21

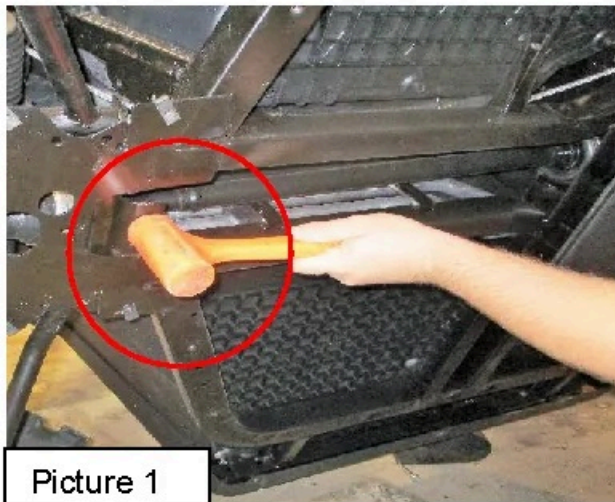
Warnings and Product Liability Disclaimer

This product is intended to be used as a cosmetic accessory under normal equipment operation and should not be depended upon or used as a safety device. Manufacturer assumes no liability for personal injury or equipment damage as the result of use or installation of this accessory. User assumes all risk. User should carefully read all instructions prior to installation. All Trail Armor products are designed, engineered, and fit to new vehicles and their specifications. Damage, modifications, and extreme wear may cause and require modifications to the product and/or your vehicle to insure proper fitment.

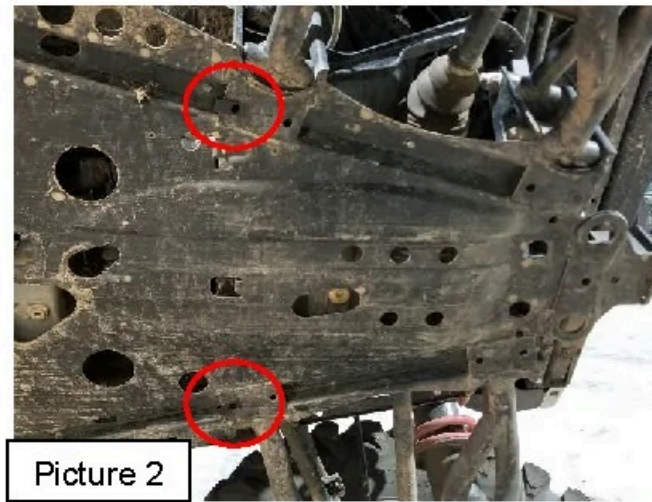


Instructions

- A. Remove the battery from the vehicle if it is not a sealed-cell battery. To ease installation, gently tip vehicle onto its side and support securely. Remove the OEM skid pan and discard. Also, locate the metal tab where the front center of the OEM skid plate was attached. The tab will need to be bent up inside the center of the frame rail. Using pliers, dead-blow hammer, etc., bend enough to install the skid set. See Picture 1.



Picture 1



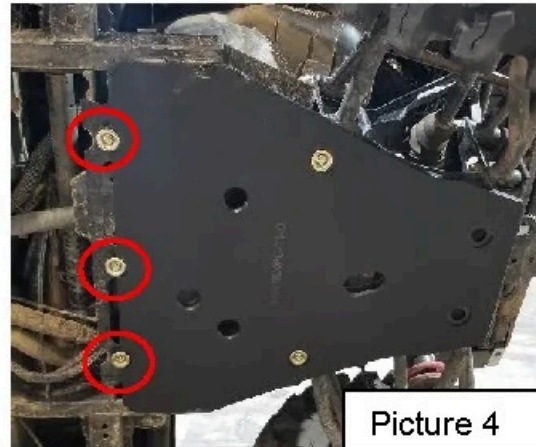
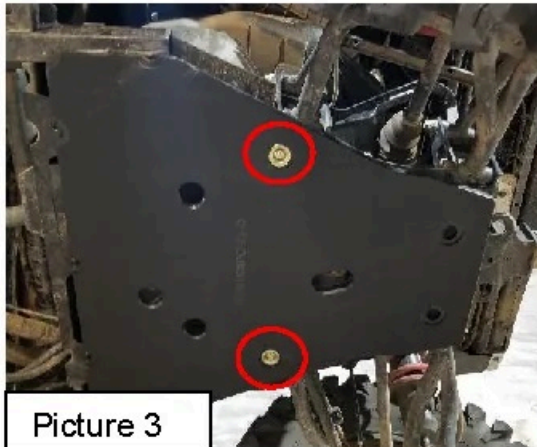
Picture 2



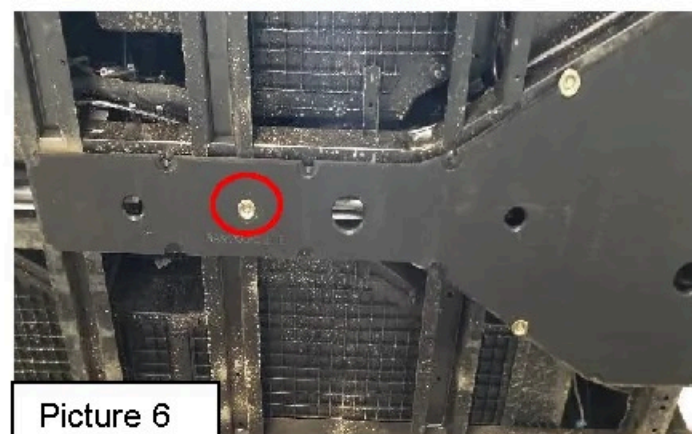
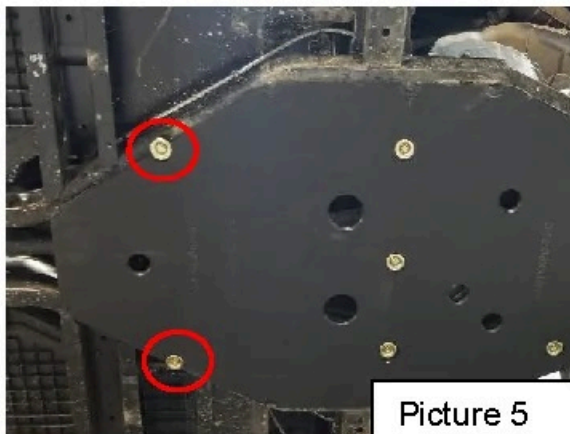
TRAILARMOR.COM
839 HWY 2 CORINTH, MS 38834
(662) 233-5700

Installation Instructions

- B. Locate two supplied $\frac{1}{4}$ -20 u-nuts from the bolt pack. To the rear of the vehicle, locate the two holes in the front of the rear a-arm mounts. Install one u-nut to each of the front holes on each side. See Picture 2.
- C. Locate Panel D of the Trail Armor skids. Also, locate two supplied $\frac{1}{4}$ -20 x 1" serrated flange bolts and two supplied bowl washers. Holding Panel D into position at the rear of the vehicle, insert one 1" bolt and washer into each of the center pre-drilled holes into the u-nuts previously installed. Loosely tighten. See Picture 3.



- D. Locate three supplied m6-1.0 x 30 mm. bolts and three supplied bowl washers. Insert one 30 mm. bolt and washer into each of the three front center holes of Panel D. Loosely tighten. See Picture 4.
- E. Locate Panel C from the skid set. Also, locate two supplied #14 x 1" TEK self-drilling screws and two supplied bowl washers. Slide Panel C underneath the three 30 mm. bolts previously installed. Make sure that Panel C is uniform with the center of the frame rails. Insert one 1" TEK screw and washer into each of the holes as shown in Picture 5. Loosely tighten.



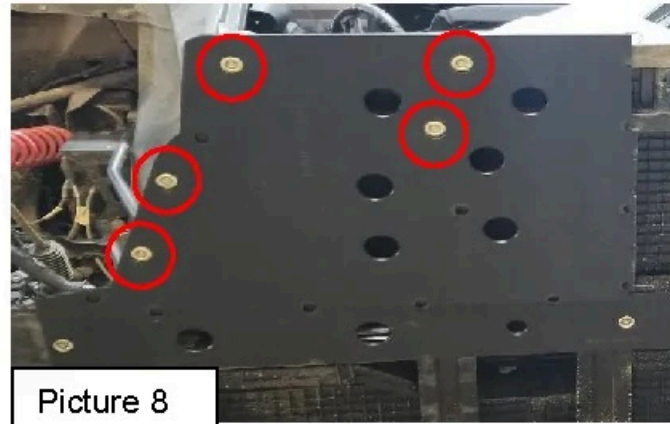
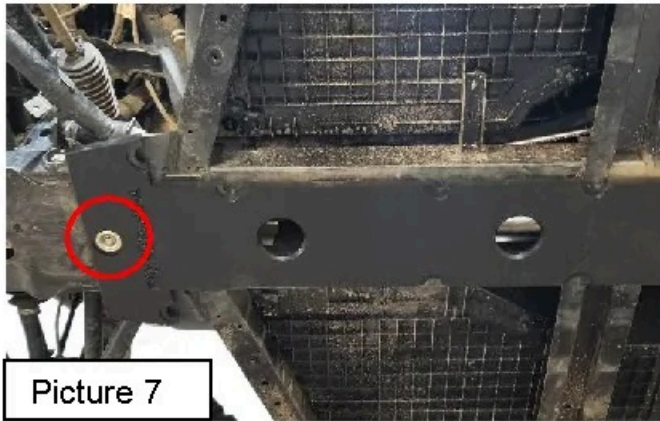
- F. Locate Panel B from the skid set. Also locate one supplied #14 x 1" TEK self-drilling screw and one supplied bowl washer. Align the joint of Panels C and B. Make sure the panel is uniform with the center of the frame rails. Insert the 1" TEK screw and bowl washer into the center of the panel. Loosely tighten. See Picture 6.



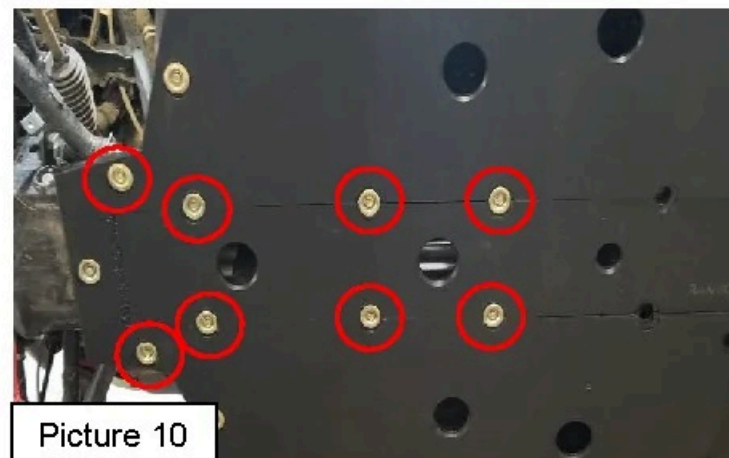
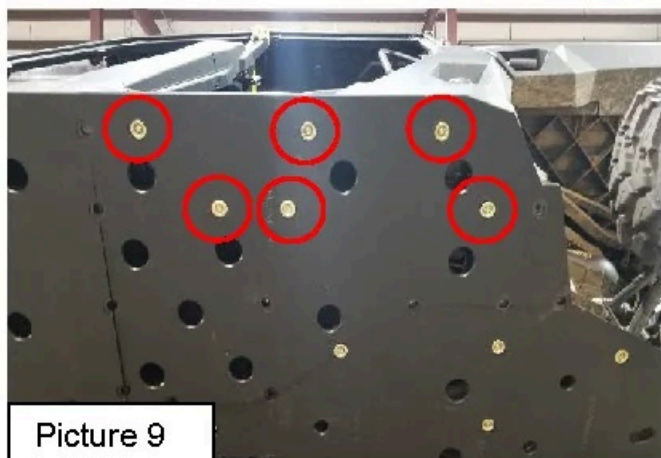
TRAILARMOR.COM
839 HWY 2 CORINTH, MS 38834
(662) 233-5700

Installation Instructions

- G. Locate Panel A from the skid set. Also, locate one supplied $\frac{1}{4}$ -20 x 1" serrated flange bolt, one supplied bowl washer, and one supplied $\frac{1}{4}$ -20 t-nut. Holding Panel A at the front of the vehicle, insert the 1" bolt and washer through the front hole of Panel A. Secure with the $\frac{1}{4}$ -20 T-nut. Placement of the t-nut can be accessed inside the frame rails behind the front axle. See Picture 7.



- H. Locate Panel E1 from the skid set. Also, locate five supplied m6-1.0 x 30 mm. bolts and five supplied bowl washers. Holding Panel E1 into position, insert one 30 mm. bolt and washer into each of the holes as shown in Picture 8. Loosely tighten. Repeat this step for Panel F1 on the passenger side.
- I. Locate Panel E2 from the skid set. Also, locate six supplied m6-1.0 x 30 mm. bolts and six supplied bowl washers. Holding Panel E2 into position, insert one 30 mm. bolt and bowl washer into each of the holes as shown in Picture 9. Loosely tighten. Repeat this step for Panel F2 on the passenger side. Align all panels and tighten fasteners securely. **DO NOT OVERTIGHTEN!**



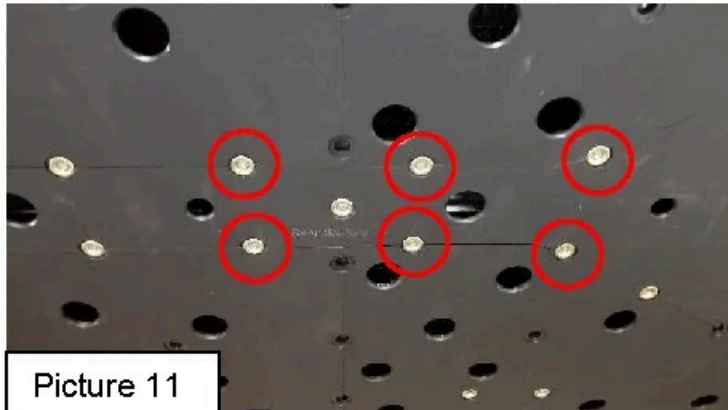
- J. Once all panels are secure, locate eight supplied #14 x 1" TEK self-drilling screws and eight supplied bowl washers. Insert one 1" TEK screw around the joints of Panel A. See Picture 10.



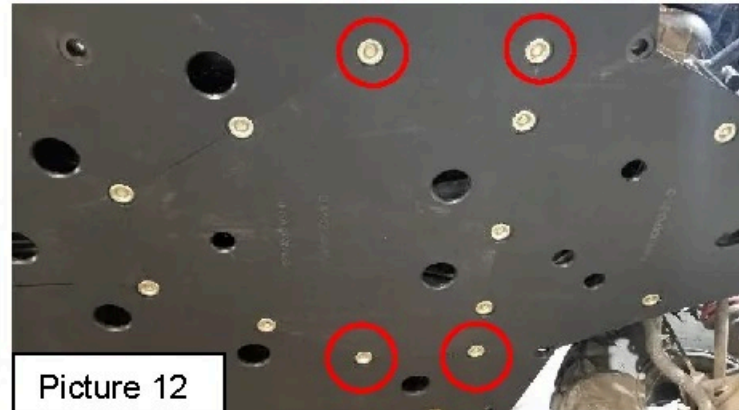
TRAILARMOR.COM
839 HWY 2 CORINTH, MS 38834
(662) 233-5700

Installation Instructions

- K. Locate six supplied #14 x 1" TEK self-drilling screws and six supplied bowl washers. Insert one 1" TEK screw and washer around the joints of Panel B. See Picture 11.

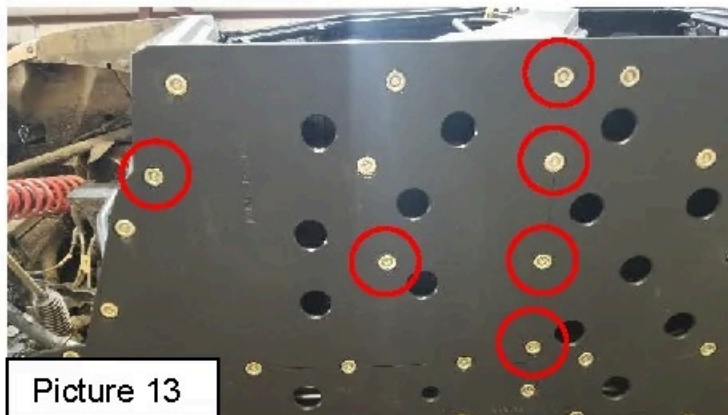


Picture 11

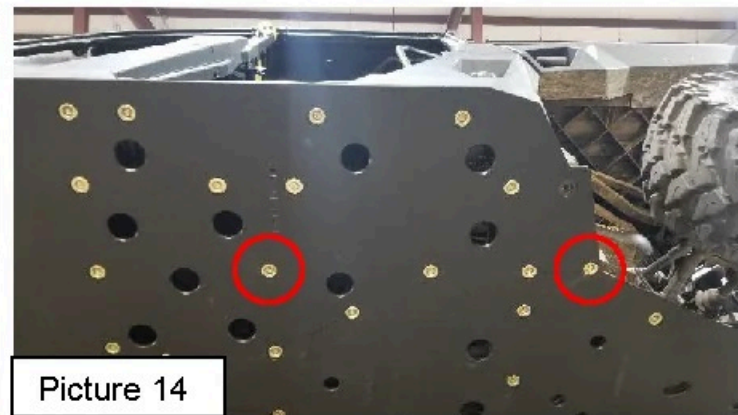


Picture 12

- L. Locate four supplied #14 x 1" TEK self-drilling screws and four supplied bowl washers. Insert one supplied 1" TEK screw and one washer into each of the remaining holes of Panel C. See Picture 12.
- M. Locate six supplied #14 x 1" TEK self-drilling screws and six supplied bowl washers. Insert one 1" TEK screw and washer into each of the remaining holes of Panel E1. See Picture 13. Repeat this step for Panel F1 on the passenger side.



Picture 13



Picture 14

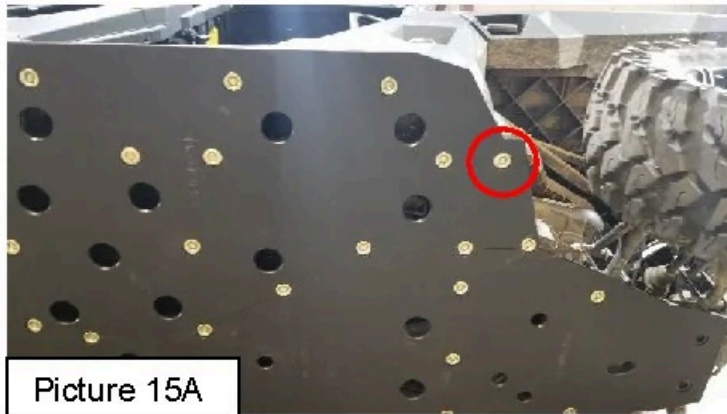
- N. Locate two supplied #14 x 1" TEK self-drilling screws and two supplied bowl washers. Insert one 1" TEK screw and washer into each of the two holes of Panel E2 as shown in Picture 14. Repeat this step for Panel F2 on the passenger side.



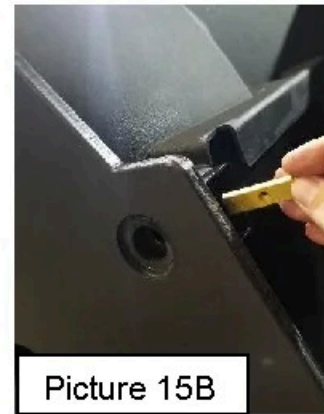
TRAILARMOR.COM
839 HWY 2 CORINTH, MS 38834
(662) 233-5700

Installation Instructions

- O. Locate one supplied $\frac{1}{4}$ -20 x 1" serrated flange bolt, one supplied bowl washer, and one supplied $\frac{1}{4}$ -20 t-nut. Insert one 1" bolt and washer into the remaining hole of Panel E2. See Picture 15A. Placement of the t-nut can be accessed from the rear of the frame rail. See Picture 15B. Repeat this step for Panel F2 on the passenger side.

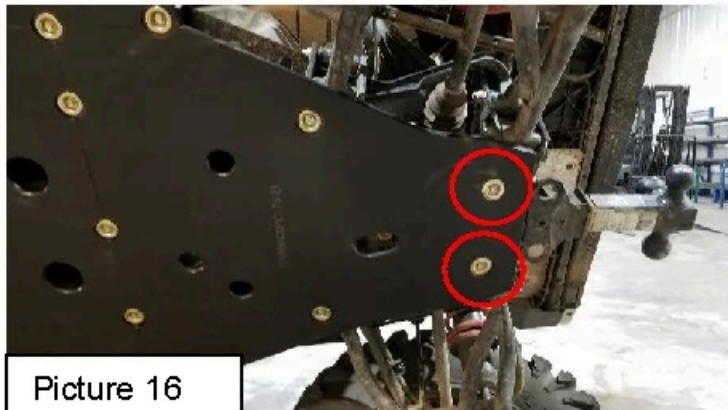


Picture 15A



Picture 15B

- P. Locate two supplied #14 x 1-1/2" TEK self-drilling screws and two supplied bowl washers. Insert these into the remaining holes of Panel D. See Picture 16. See Picture 17 for final installation.



Picture 16



Picture 17