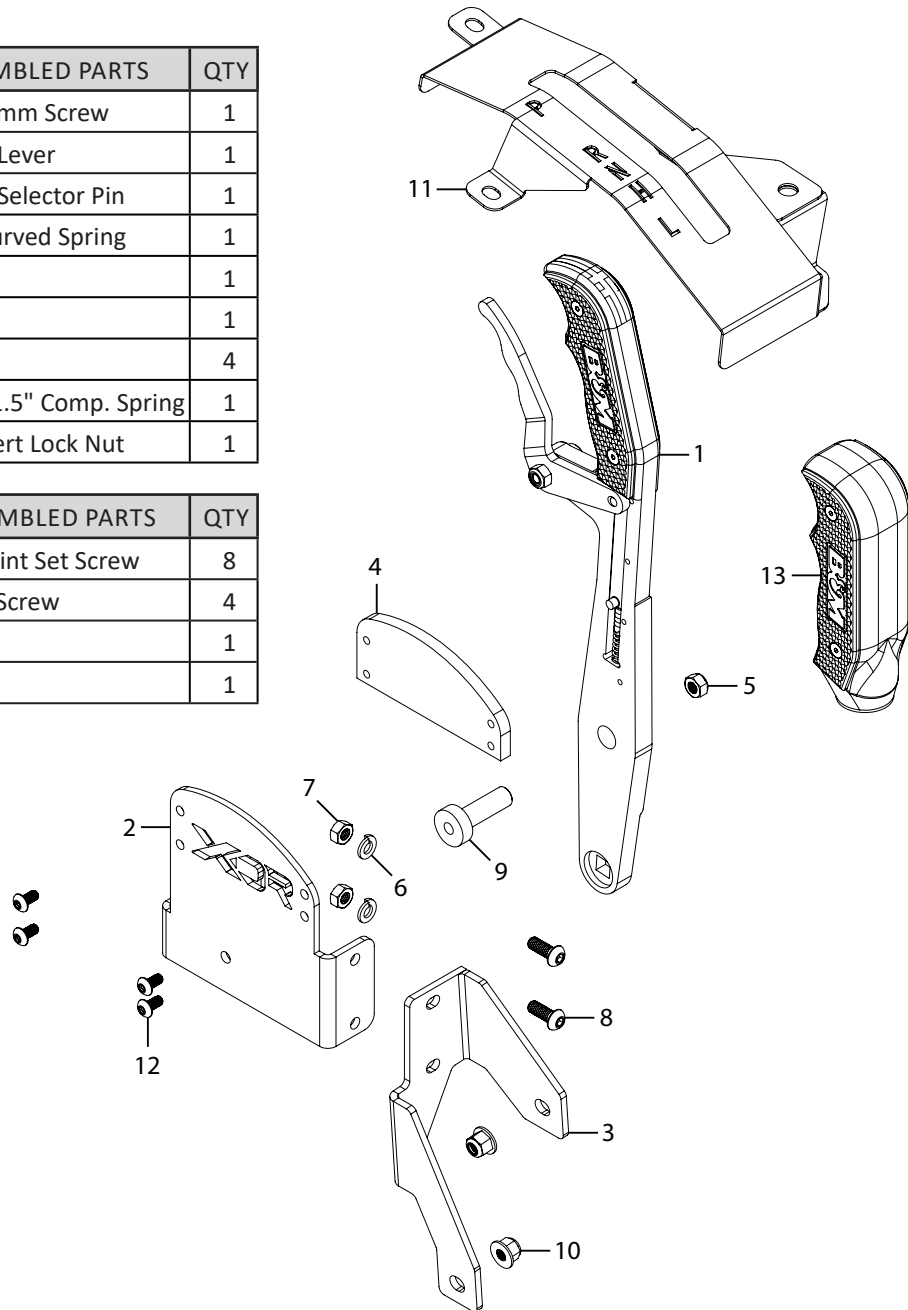


PART #	ITEM 1 ASSEMBLED PARTS	QTY
3401614	Thread 8mm x 12mm Screw	1
4001788	Dual Gate Shifter Lever	1
4001789	Dual Gate Shifter Selector Pin	1
3401622	.331ID x .49OD Curved Spring	1
4001492	Left Shifter Plate	1
4001495	Right Shifter Plate	1
3401537	6-32 x 5/16" Screw	4
3401625	.216"ID x .30D x 1.5" Comp. Spring	1
3401616	M6-1.0 Nylon Insert Lock Nut	1

PART #	ITEM 13 ASSEMBLED PARTS	QTY
3401545	10-32 x 3/16" Cup Point Set Screw	8
3401549	6-32 x 1/4" FH SHS Screw	4
4001492	Left Shifter Plate	1
4001495	Right Shifter Plate	1



ITEM	PART #	DESCRIPTION	QTY.
1	4001807	Gated Shifter Stick	1
2	4001780	Gate Mount	1
3	4001814	Gate Mount Bracket	1
4	4001806	Gate Plate	1
5	3401616	M6-1.0 Nylon Insert Lock Nut	1
6	3401580	M6 Split Lock Washer	2
7	3401566	Hex M6-1.0 Nut	2

ITEM	PART #	DESCRIPTION	QTY.
8	3401630	M6-1.0 X 16MM Hex Screw	2
9	4001808	.24" I.D. X .75" O.D. Spacer	1
10	3401567	M6 Flanged Nylock Nut	2
11	4101369	Dust Cover	1
12	3401397	10-32 X 3/8 S.S. Screw	4
13	4001753	Magnum Grip Grab Handle Body	1

OVERVIEW:



1. Take a moment to read and understand these instructions before installing your Flowmaster performance system.

NOTE: Please inventory all parts now before continuing and if necessary, report any missing items to our tech line. This will avoid potentially stranding your vehicle until any missing replacement parts arrive.

REMOVE STOCK COMPONENTS:



2. Securely chock vehicle's wheels, then loosen jam nut and remove shift knob.



3. Remove screw and passenger grab handle (twist back and forth while pulling).



4. Remove screws (x5) and retain them for later use.

2-SEAT MODELS:



5. Remove push rivets (x2). **THEN GO TO STEP 15.**

4-SEAT MODELS:



6. Slide frong seats fully forward. At rear of console cover, remove screws (x3) and push rivets (x2).



7. Unsnap clip securing rear of each rear side panel to rear console cover.



8. Remove rear console cover.



9. Gain access to screws (x3) securing front of middle console cover as follows (Steps 10-12).



10. Remove screw at rear of middle console cover.



11. Unsnap clips (x3) and remove both middle side panels.



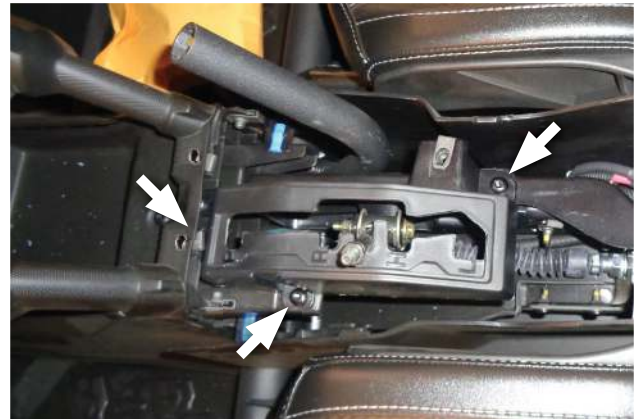
12. Remove screws (x3) under front cup holder in middle console cover.



15. Remove both front side panels.



13. Remove middle console cover.



16. Move shifter into "Neutral". Remove and retain screws (x3) then shifter gate.

All MODELS:



14. Unsnap clips (x3) on front side panels, then remove front console cover.



17. Remove nut plate from passenger side of shifter gate. Retain it for later use.



18. Remove nut and washer connecting shift lever to cable. Retain nut for later use.



21. Remove and retain plastic sleeves (x2) from shifter.



19. Remove shift lever pivot screw, nut and washers, then shift lever. Retain screw and washer for later use.



22. Remove screw, nut and washer securing grab handle tube to frame. Retain fasteners for later use.



20. Remove pivot bushing.



23. Remove nut plates (x2) at front of shift cable support as follows (Steps 23-26).



24. Remove screws (x2) securing left side of cable support.



25. Remove screws (x2) securing right side of cable support.



26. Lift cable support out of frame.



27. Remove nut plates (x2) at front of shifter support.



28. Reinstall cable support into frame. Hand-start (do not tighten) only rear screws (x2).

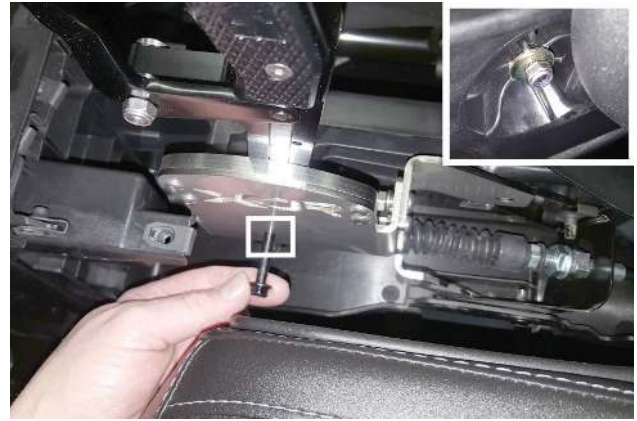
Install XDR Dual Gate Shifter kit:



29. Install plastic sleeves (x2) (removed step 21) then spacer (9) onto shifter stick (1).



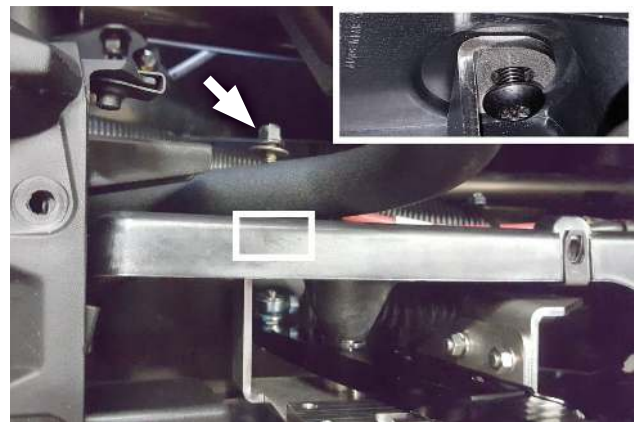
30. Install shifter stick by inserting spacer through pivot bore then secure shifter cable by tightening nut (removed step 19).



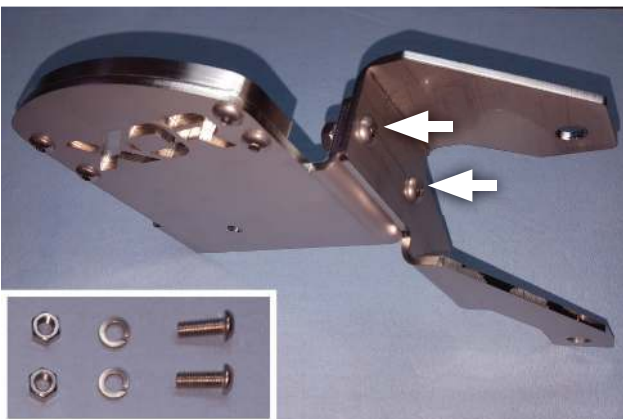
33. Use shift lever pivot screw, washer (removed step 19) and lock nut (5) to loosely fasten gate mount assembly into place as shown.



31. Apply loctite to screws (x4) and use them to fasten gate mount (2) to gate plate (4).



34. Loosely fasten front gate mount to frame and grab handle using screw, nut and washer (removed step 22).



32. Loosely fasten gate mount bracket (3) to gate mount with (x2 ea.) screws (8), split lock washers (6) and hex nuts (7).



35. Secure gate mount bracket to cable support using screws (removed steps 23-25). Fasten components loosely using nuts (x2) (10).



36. Now that shifter components have been assembled, go back and completely tighten fasteners from the previous steps in this order: Steps 33, 34, 35, 32.



37. Move shifter through all gears and verify their proper function.



38. If necessary, adjust shifter cable nut for precision and alignment with transmission as you shift through each gear.



39. Remove and retain both shifter plate covers and screws (x4).



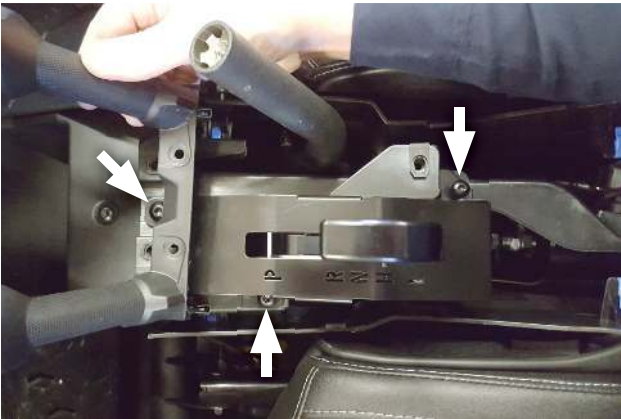
40. Remove and retain lock nut, shoulder bolt, spring washer and shift lever from shifter stick.



41. Transfer nut plate (removed step 17) from factory shifter gate to **dust cover (11)**.



42. Set dust over over shifter stick back onto console.



43. Secure dust cover using screws (x3) (removed step 16) as shown.



44. Re-install side panels and console cover.



45. Install **magnum grip grab handle (13)** then cover plates and screws.



46. Install lock nut, shoulder bolt, spring washer and shift lever (removed step 40) onto shifter stick. Then install shifter both plate cover and screws (x4) (removed step 39).



Congratulations, the installation of your XDR Dual Gate Shifter kit is now complete!

