



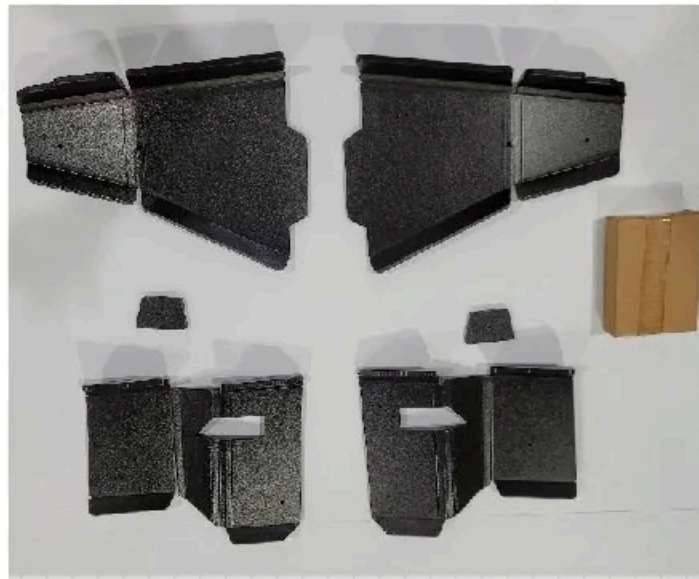
TRAILARMOR.COM
839 HWY 2 CORINTH, MS 38834
(662) 233-5700

Installation Instructions

Trail Armor Polaris General XP 1000 iMPact A-Arm Guards Front and Rear **TA011ARMIMP-GEN-XP**

Warnings and Product Liability Disclaimer

This product is intended to be used as a cosmetic accessory under normal equipment operation and should not be depended upon or used as a safety device. Manufacturer assumes no liability for personal injury or equipment damage as the result of use or installation of this accessory. User assumes all risk. User should carefully read all instructions prior to installation. All Trail Armor products are designed, engineered, and fit to new vehicles and their specifications. Damage, modifications, and extreme wear may cause and require modifications to the product and/or your vehicle to insure proper fitment.



Front

- A. To begin installation, lift vehicle and place safety stands underneath. Remove tires to ease installation.
- B. Locate the driver's side front A-Arm guard engraved GENXP-DF and plastic a-arm clamp. Place the plastic a-arm clamp into the cross brace at the center of the a-arm with the long side of the clamp towards the rear of the vehicle.
- C. Locate one supplied $\frac{1}{4}$ -20 x 1 $\frac{3}{4}$ " flat head socket cap screw and one supplied $\frac{1}{4}$ -20 nylock nut. Holding the guard into position, insert the cap screw through the center hole of the guard, through the plastic a-arm clamp, and secure with the nylock nut. Loosely tighten. See Picture 1.



Picture 1

Picture 2A



Picture 2B



- D. Locate three supplied 1-1/4" P clamps, three supplied $\frac{1}{4}$ -20 x 1-1/4" flat head socket cap screws, and three supplied $\frac{1}{4}$ -20 nylock nuts. Insert one cap screw through each of the remaining holes of the guard, through the clamps, and secure with the nylock nuts. See Pictures 2A and 2B.
- E. Starting with the center cap screw, tighten all fasteners securely. Tighten screws to where the heads of the screws fit flush with the guard.

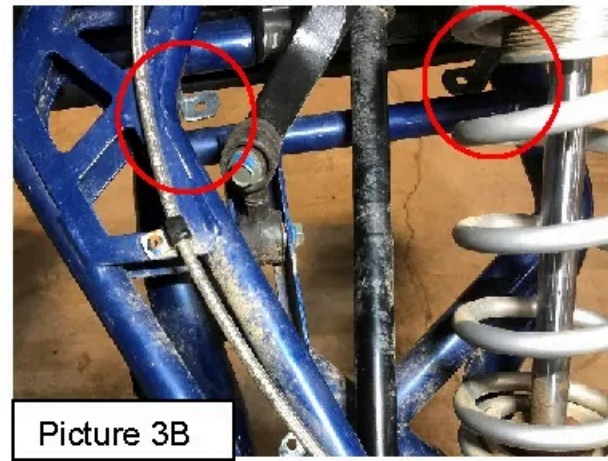
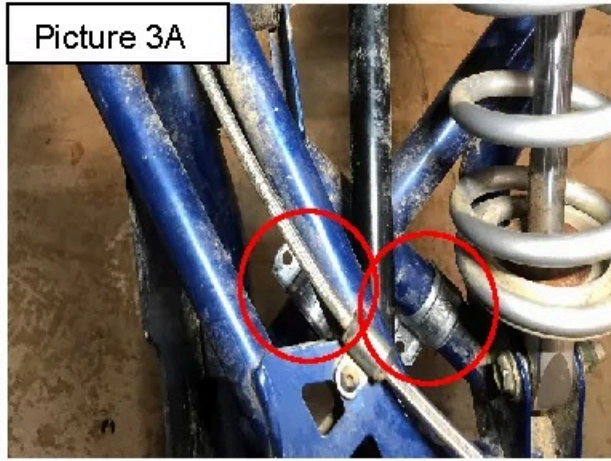


TRAILARMOR.COM
839 HWY 2 CORINTH, MS 38834
(662) 233-5700

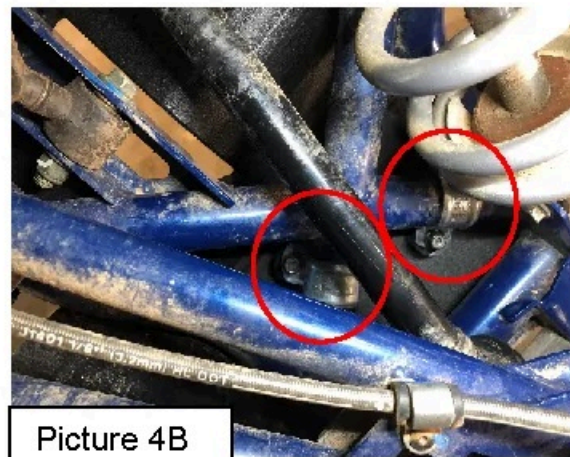
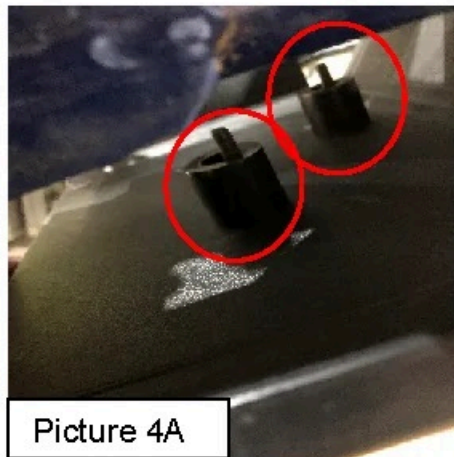
Installation Instructions

REAR

- F. Locate two supplied short tab 1" EMT clamps. The EMT clamps may need to be tapped onto the a-arm with a small hammer. Location shown in Picture 3A.



- G. Locate two supplied 1-1/4" EMT clamps. Tap these onto the a-arms towards the center of the vehicle. See Picture 3B.
- H. Locate the driver's side rear A-Arm guard engraved GENXP-DR. Leave plastic factory guards in place. Also, locate two supplied 1/4-20 x 2-1/4" flat head socket cap screws, two supplied 1" spacers, and two supplied 1/4-20 nylock nuts. Holding the a-arm guard in place, insert one cap screw through each of the outer holes of the guard, through the 1" spacers, through the outer EMT clamps, and secure with the nylock nuts. See Pictures 4A and 4B. Loosely tighten until all bolts and nuts are started.

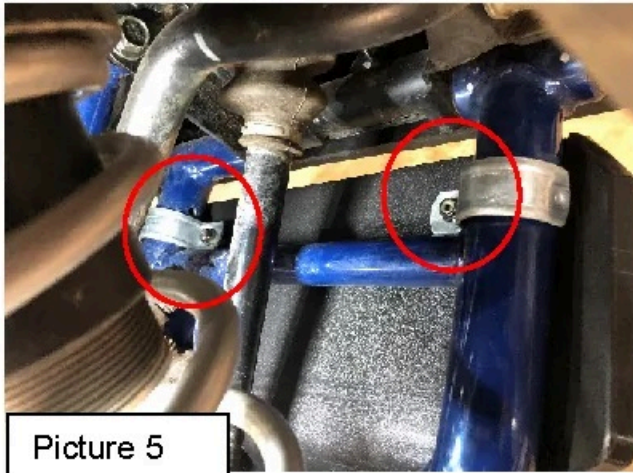




TRAILARMOR.COM
839 HWY 2 CORINTH, MS 38834
(662) 233-5700

Installation Instructions

- I. Locate two supplied $\frac{1}{4}$ -20 x 1-1/4" flat head socket cap screws and two supplied $\frac{1}{4}$ -20 nylock nuts. Insert one cap screw through each of the inside holes of the guard, through the EMT clamps, and secure with the nylock nuts. See Picture 5.



- J. Starting with the fasteners on the cross braces, tighten all fasteners securely. Repeat all steps for the passenger side. Replace tires and wheels and check all lug nuts.

Enjoy!! Any questions, contact Trail Armor at 662-233-5700 or www.trailarmor.com.