

Installation Instructions

Eibach Springs, Inc. • 264 Mariah Circle • Corona, California 92879-1751 • USA • Tech Support 800-222-8811 Ext 114

PRO-UTV #E85-209-007-03-22

Kit Contents	Description	Part Number	Qty
	Front Main Spring	1000.300.0250S	2
	Front Secondary Spring	0800.300.0200S	2
	Rear Main Spring	1800.300.0350S	2
	Rear Secondary Spring	1000.300.0150S	2
	Front Slider	8001100	2
	Front Crossover Ring	8001224	2
	Rear Slider	8001064	2
	Rear Crossover Ring	8001063	2
	Instructions	PRO.UTVINST	1

NOTES: Read All Instructions Before Beginning Installation

- Only qualified technicians experienced in the installation and removal of suspension components should perform this installation.
- Use of a hoist and screw jack is highly recommended and will substantially reduce installation time.
- Never work on or under a vehicle unless it is properly supported.

RECOMMENDED FRONT SET-UP

1. Raise the front of the vehicle and support it with the proper safety equipment. **Note: Never work on or under a vehicle that is not supported by the proper safety equipment.**



Photo 1



Photo 2



Photo 3

2. Loosen and remove the hardware that secures the coilover to the upper and lower mount, then, remove the

coilover from the vehicle as shown. (See Photos 1, 2 & 3)

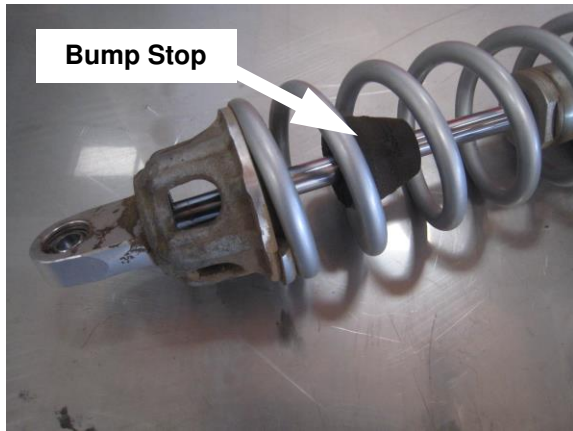


Photo 4



Photo 5

3. Use a screw driver to slide the bump stop upwards away from the spring retainer, then, fully loosen the preload collar as shown. (See Photos 4 & 5)



Photo 6



Photo 7

4. Press firmly downward on the spring, then, remove the retainer, and main spring as shown. (See Photos 6 & 7)

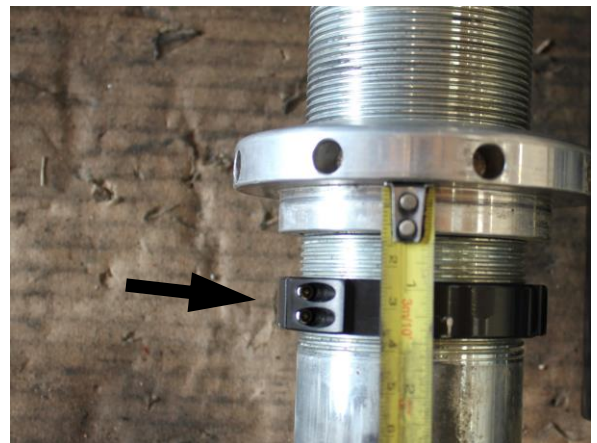


Photo 8

5. Install the provided crossover ring as shown. **Note:** These will be set at full high(inactive) for this install. For more information on tuning visit Eibach.com (See Photo 8)



Photo 9



Photo 10



Photo 11

6. You can now install the secondary spring, provided slider, and main spring as shown. (See Photos 9, 10 & 11)



Photo 12



Photo 13

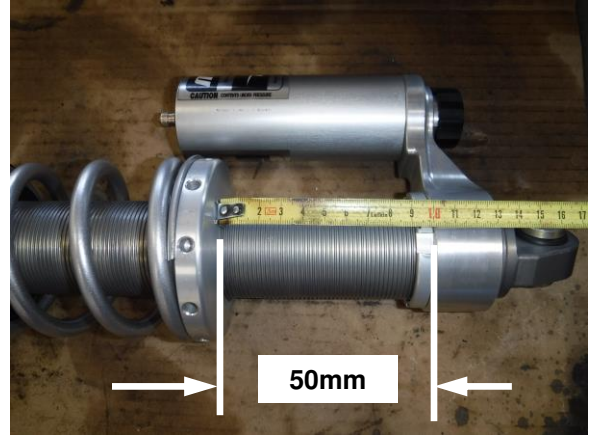


Photo 14

7. Install the OE retainer, then, adjust and set the preload collar to 50mm as shown and tighten the crossover rings. (See Photos 12, 13 & 14)



Photo 15



Photo 16



Photo 17

8. You can now reinstall the coilover using the factory hardware. (See Photos 15, 16 & 17)
9. Repeat the process on the opposite side, then, set the vehicle on the ground, making sure it's fully settled.



Photo 18

10. You can now adjust the upper preload collar to adjust the ride height. The recommended preload measurement in Step 7 Photo 14 will get the vehicle close to the recommended ride height but each vehicle may vary some. We recommend setting the ride height at **395mm** measuring from the ground to the center of the lower control arm bolt as shown. **Note: If you have**

larger than stock wheels and tires, the ride height will be increased. (See Photo 18)

RECOMMENDED REAR SET-UP

1. Raise the rear of the vehicle until the wheels are off the ground and the suspension is fully unloaded. **Note: Never work on or under a vehicle that is not supported by the proper safety equipment.**



Photo 19



Photo 20



Photo 21

2. Loosen and remove the hardware that secures the upper and lower coilover mounts, then, remove the coilover as shown. (See Photos 19, 20 & 21)



Photo 22



Photo 23



Photo 24



Photo 25



Photo 26

- Using the height adjustment tool, adjust the preload collar upwards until there is no preload on the spring, then, remove the retainer, dust shield, secondary spring, slider and main spring as shown. (See Photos 22, 23, 24, 25 & 26)

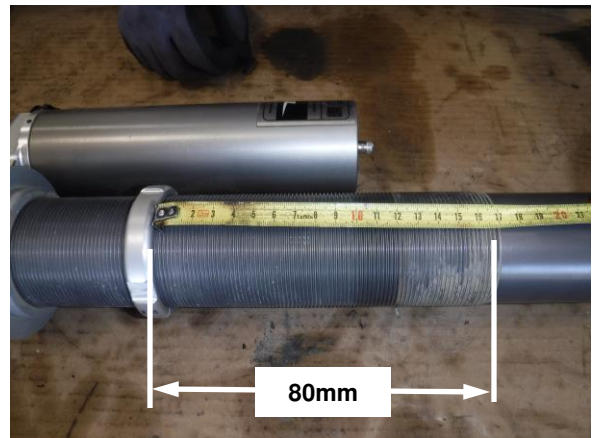


Photo 27

- Install the crossover ring approximately **80mm** from the bottom of the coilover threads. (See Photo 27)



Photo 28



Photo 29



Photo 30

5. You can now install the secondary spring, provided slider, and main spring as shown. (See Photos 28, 29 & 30)



Photo 31



Photo 32

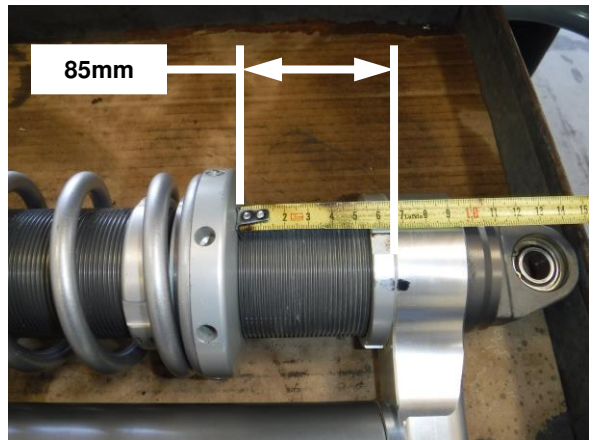


Photo 33

6. Install the retainer and dust shield in their original orientation, then, adjust the preload collar and set to 85mm as shown. (See Photos 31, 32 & 33)



Photo 34



Photo 35

7. You can now reinstall the coilover and secure it to the upper and lower mounts using the OE hardware. (See Photos 34 & 35)
8. Repeat the process on the opposite side, then, set the vehicle on the ground, making sure it's fully settled.



Photo 36

11. You can now adjust the upper preload collar to adjust the ride height. The recommended preload measurement in **Step 6 Photo 33** will get the vehicle close to the recommended ride height but each vehicle may vary some. We recommend setting the ride height at **375mm** measuring from the ground to the center of the lower control arm bolt as shown. **Note: If you have**

larger than stock wheels and tires, the ride height will be increased. (See Photo 36)

RECOMMENDED FRONT AND REAR SHOCK SETTINGS

- **Front:** 7 clicks counter-clockwise from closed.
- **Rear:** 7 clicks counter-clockwise from closed.

Note: These are the recommended shock settings that we tested using the spring rates provided in this kit.

Note: Full closed is clockwise