



MADE FOR FIRST. BUILT TO LAST.

DISCLAIMER:

PRODUCTS MADE BY L AND W FAB AND MACHINE INC. ARE INTENDED TO FIT YOUR STOCK UTV UNLESS OTHERWISE SPECIFIED. INSTALLING, MODIFYING, OR REMOVING ANY COMPONENTS (FACTORY OR AFTERMARKET) NOT SUPPORTED BY L AND W AND THE INSTRUCTIONS HEREIN WILL VOID YOUR WARRANTY. FOR MORE INFORMATION ON INSTALLATION, WARRANTY, OR PRODUCT USE PLEASE CALL US AT (770) 445-9778

POLARIS RZR REAR LIGHT BAR MOUNT

FITMENT: 2019+ RZR XP/TURBO AND 2018+ TURBO S



INSTALLATION MANUAL

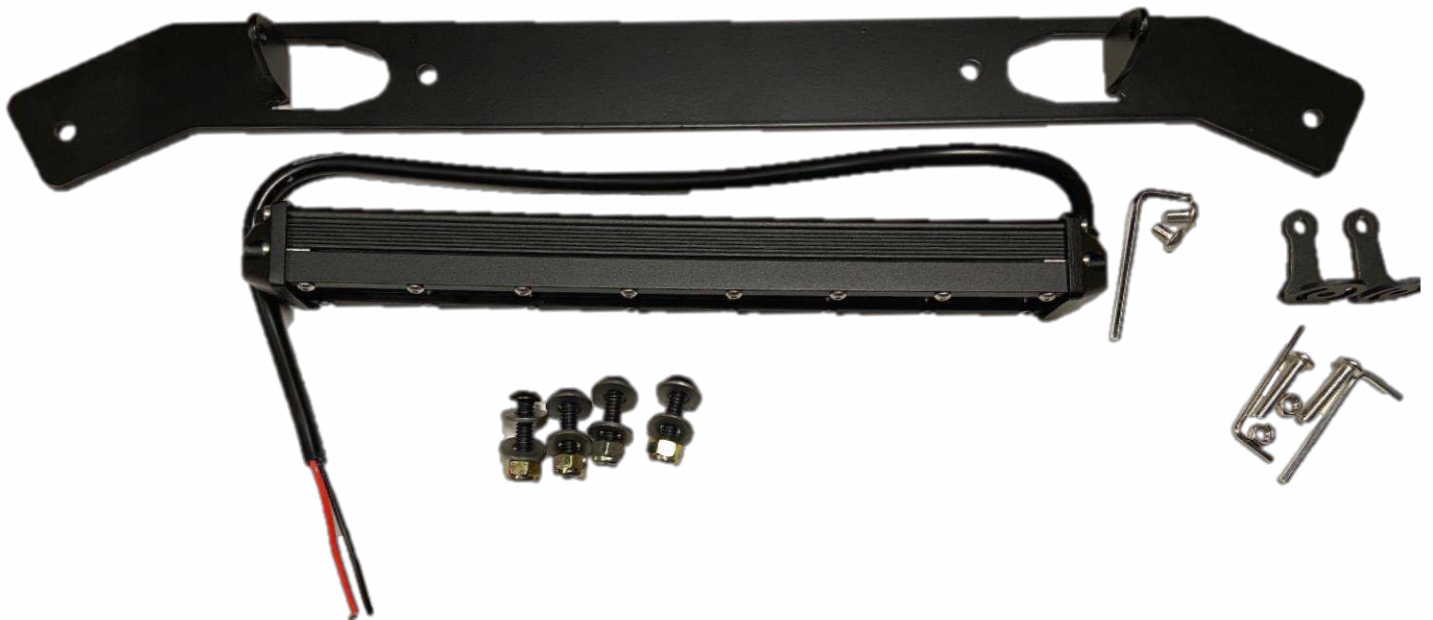
PARTS LIST:

Item #	Part #	Description	Qty.
1	N/A	Light Mount	1
2	N/A	Light Bar Kit	1
3	N/A	Mounting Tabs	2
4	N/A	1/4x20 1in Hex Screws	4
5	N/A	1/4x20 Nuts	4
6	N/A	1/4 Washers	8

TOOLS:

Tool	Qty.
4mm Hex Key	1
3mm Hex Key	1
7/16 Wrench	1

Parts:



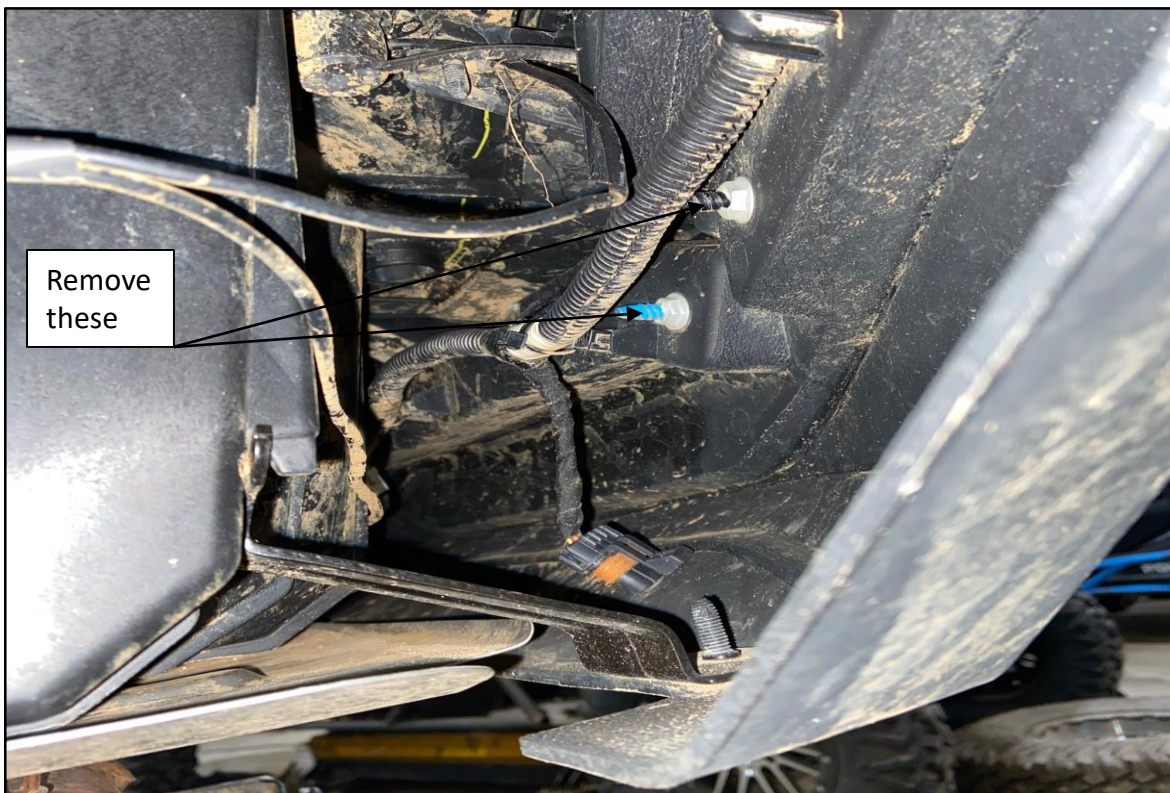
INSTALLATION:

STEP 1: Begin by arranging your parts as shown on the parts page. Reach behind the rear plastics in *figure 1* where the OEM plastic is and find the 4 plastic nuts shown in *figure 2*. Remove these nuts then remove the plastic guard.

Figure 1



Figure 2



STEP 2: Feed the light bar's wiring through the opening in the center of the mount. Next use two of the 1/4 screws in the two center holes on the light mount. Use a washer on each side of the screw and tighten these nuts down. Insert the lightbar into the center of the mounting tabs and use one of the supplied screws on each side of it to secure the light bar to its mount. Be sure to leave these loose for the time being. Finally, install the last two 1/4 screws on the outside holes of the mount. Use a washer on each end of the screws and tighten these securely.

STEP 3: Follow the instructions included with the lightbar to wire it up correctly. Once completed turn the light bar on and go to the back of the vehicle. Adjust the lightbar to its desired angle, then tighten the screws on each side of it to fix the lightbar in place. The installation is now complete and will resemble *figure 3* below.

Figure 3



TEMPLE, GA 30179



(770) 445-9778

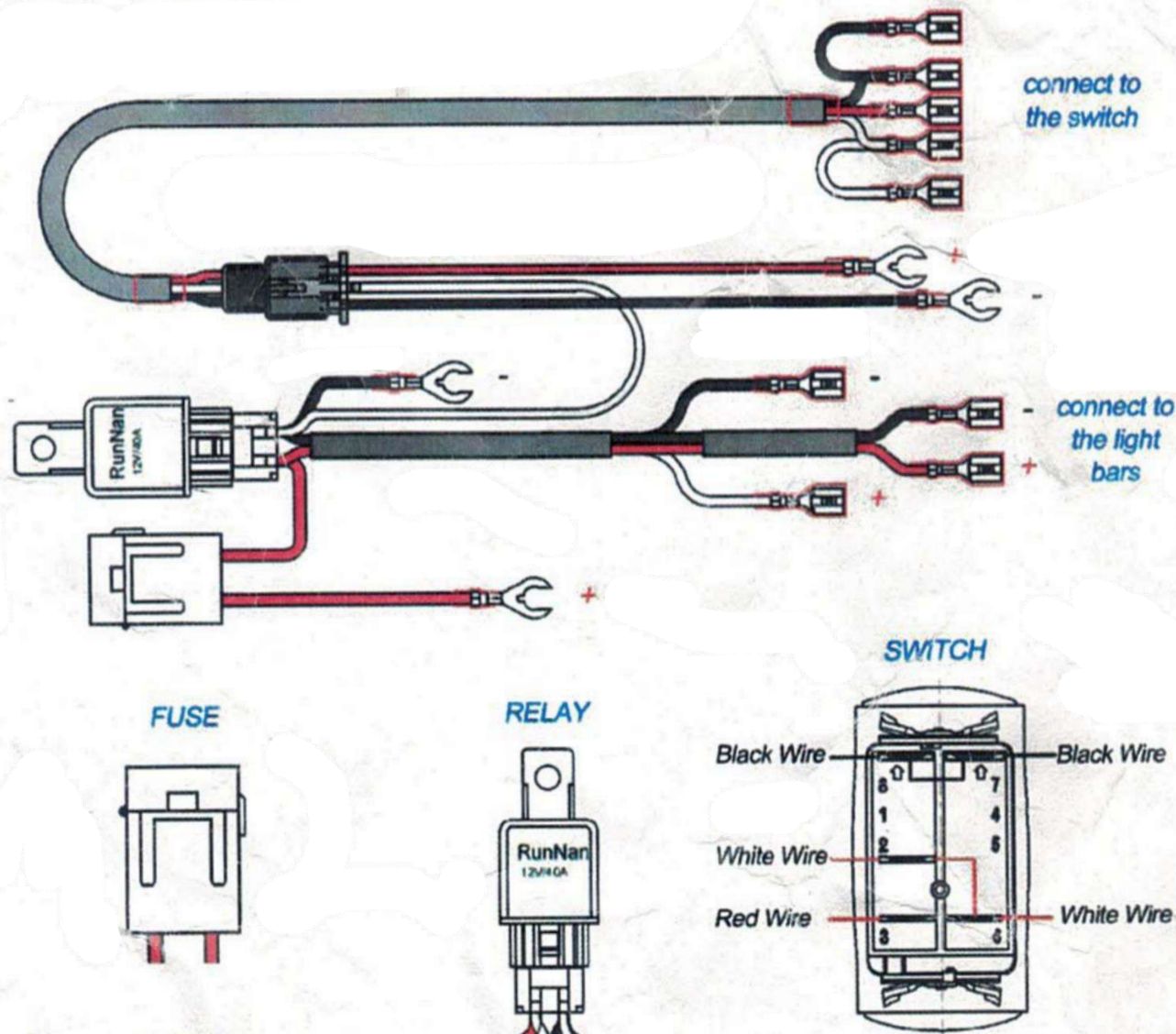
THANK YOU FOR CHOOSING L&W FAB AND MACHINE INC!

WIRING HARNESS SERIES

SKU: 1002000 / FN : FSJQ-WY-001

WWW.WOWFACTORMALL.COM

EMAIL: WOWFACTORMALL@OUTLOOK.COM



INSTRUCTION

1. Connect the switch follow the instruction above
2. Connect the white and red wires+ from the relay to each red wires+ of the light bars, connect black wires- from the relay to each black wires of the light bars
3. Connect the red wire (have fuse) from the relay to battery+, connect the black wire from the relay to battery-
4. Connect the red wire from the switch to battery+
5. Connect the other black wire from the switch to battery-
6. Turn on on / off button of switch to test the light bar