

Polaris General Rear Bumper

Extreme Metal Products # 13096

Directions Polaris General Rear Bumper

Hardware:

- $\frac{5}{16}$ -18 X 3 $\frac{1}{2}$ " Hex Bolt (4)
- $\frac{5}{16}$ -18 Flange Nylon Lock Nut (4)
- $\frac{3}{8}$ -16 X 1" Carriage Bolt (6)
- $\frac{3}{8}$ -16 Flanged Nylon Lock Nut (6)
- Logo Sticker (1)

Tools Required:

- 15mm Socket & Wrench
- $\frac{9}{16}$ " Socket & Wrench
- $\frac{1}{2}$ " Socket & Wrench

Ratchet

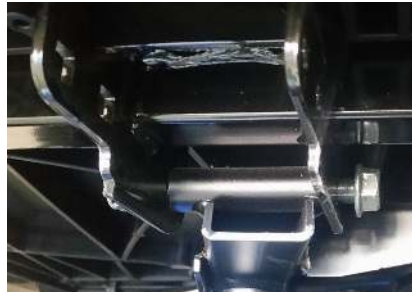
Leave Nuts & Bolts Loose Until Bumper Is In Place

Preparation:

- 1) Loosen the nuts from the two bolts that secure the bed to the frame.

Mounting Rear Bumper:

- 1) Doing one side at a time, carefully slide the bolt that connects the bed to the frame over about $\frac{3}{8}$ ".
- 2) Place mounting bracket in place and slide the two $\frac{5}{16}$ -18 X 3 $\frac{1}{2}$ " hex bolts into place securing with the $\frac{5}{16}$ -18 flange nylon lock nut.
- 3) Following steps 1 & 2 do the same for opposite side.
- 4) Place rear bumper on the mounting brackets and secure with the six $\frac{3}{8}$ -16 X 1" carriage bolts and $\frac{3}{8}$ -16 flanged nylon lock nuts.
- 5) Once everything is in place starting at the bumper tighten all bolts and nuts.
- 6) Enjoy the trails.



EXTREME
METAL PRODUCTS

WWW.EXTREMOMETALPRODUCTS.COM