



## 2019+ Honda Talon Nerf Bars # S3191



## INSTALLATION INSTRUCTIONS

# Honda Talon – Nerf Bars



## 2019+ Honda Talon

### Nerf Bars # S3191

## PARTS LIST

ITEM	PART #	DESCRIPTION	QTY
		Passenger Side Nerf Bar	1
		Driver Side Nerf Bar	1
		Bolt Kit	1
		Finishing Plug	4

- 1.) Place Talon on flat ground and ensure machine is in park (P).
- 2.) Remove push pins from rear fender flare to loosen flare. Removal is not necessary.
- 3.) Remove push pins from front access panel. (See picture A)
- 4.) Remove 2 push pins from inside of machine on the side of the floorboard (See picture B)
- 5.) Remove 2 push pins and allen bolts along the side of the rocker panel. Remove hex head bolts along the bottom side of the rocker panel. (See pictures C & D)
- 6.) Next, remove rocker panel. Be careful not to break the tabs on the rear fender flare.
- 7.) Remove the 4 skid plate bolts and cup washers to gain access to back side of frame.
- 8.) Using a Dremel tool (or similar cutting tool), cut along the preformed line on the back side of the rocker panel. (See picture E)
- 9.) Reinstall rocker panel, taking care not to damage fender flare.
- 10.) Install nerf bar using short bolts in rear and long bolts in front. Use flat washers on bolt head side and nut side. (See picture F) Hand tighten all hardware first, before final tighten. Use blue thread locker.
- 11.) Reinstall 4 skid plate bolts and cup washers.
- 12.) Install finishing plugs into nerf bar ends. Rubber hammer works well.
- 13.) Repeat for other side.



## 2019+ Honda Talon

### Nerf Bars # S3191

14.) Test drive machine and recheck fasteners.

Thank you for choosing S3 Power Sports. Let us know if you have any questions.

**Picture A**

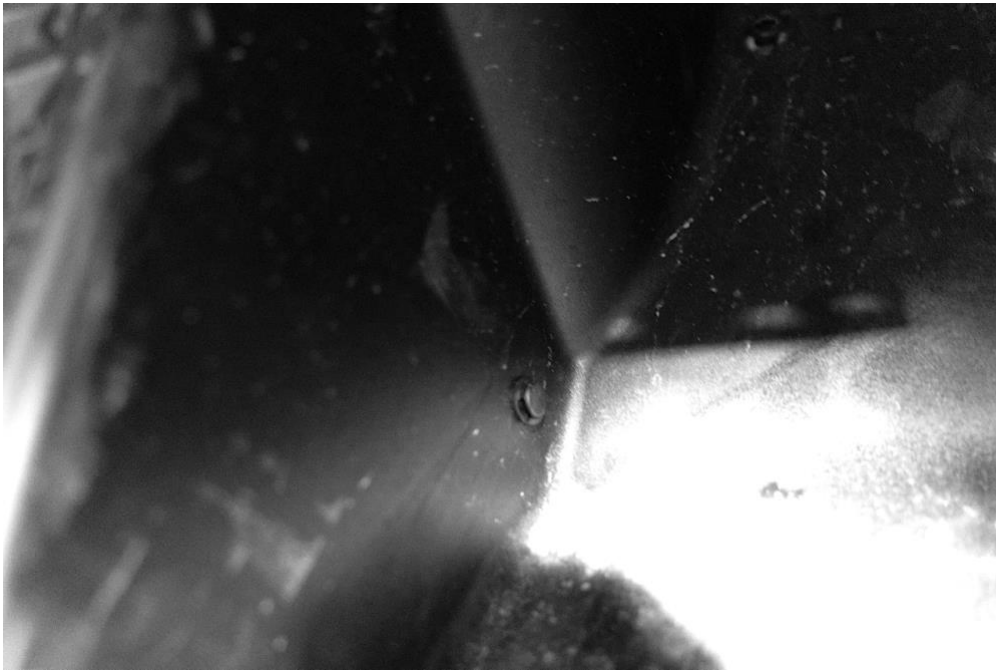




## 2019+ Honda Talon

### Nerf Bars # S3191

**Picture B**



**Picture C**







## 2019+ Honda Talon

### Nerf Bars # S3191

**Picture D**



**Picture E**





## 2019+ Honda Talon

### Nerf Bars # S3191

**Picture F**

