



2020+ Polaris RZR Pro XP
Billet Upper Radius Rods # S3172



INSTALLATION INSTRUCTIONS
RZR Pro XP
Billet Upper Radius
Rods



2020+ Polaris RZR Pro XP Billet Upper Radius Rods # S3172

PARTS LIST

ITEM	PART #	DESCRIPTION	QTY
	S3171	Billet Aluminum Upper Radius Rod – Driver (Pre-assembled with Below Hardware)	1
	S3171	Billet Aluminum Upper Radius Rod – Passenger (Pre-assembled with Below Hardware)	1
		7/8" Chromoly Heim Joint w/Jam Nut	2
		3/4" Uniball w/Snap Ring	2
	11287	Misalignment Spacer	8
	9452K387	Neoprene O-Ring	2

- 1.) Place RZR in park (P) on a flat level surface, elevate and support on suitable jack stands. Remove rear tires and plastic brake line cover.
- 2.) Remove bolt, washer, and nut securing OEM radius rods to bearing carrier on each side, using 18mm socket and wrench. Retain hardware.
- 3.) Allow OEM radius rods to carefully hang from radius rod plate. Remove 6 Torx 40 bolts securing rear fascia. Retain hardware. See Picture A.
- 4.) Remove each OEM radius rod individually by removing the bolt, washer, and nut using an 18mm socket and wrench. This will also allow removal of OEM radius rod plate. (*Pro Tip : Gain access to the nuts with an open end wrench from behind transmission.*)
- 5.) Prep the S3 Radius Rods to correct length. This can be done 2 ways :
 - a. Measure OEM upper radius rod's center bolt hole to center bolt hole. Adjust S3 Radius Rods to same measurement.
 - b. Using a bolt from the bottom, place S3 Radius Rods on top of OEM radius rods and adjust until measurement is the same. See Picture B.
- 6.) Install Lower Radius Rods into bearing carrier using OEM hardware. Hand tighten only. (*Pro Tip : Rest the heim joints onto the OEM Frame Pull Loop for ease of radius rod plate installation. See Picture C.*) (*Note : S3 Radius Rods are side specific.*)



2020+ Polaris RZR Pro XP Billet Upper Radius Rods # S3172

- 7.) Install radius rod plate (OEM or aftermarket) onto S3 Radius Rods and then onto frame. Hand tighten only. *(Pro Tip : Have an assistant manipulate hub assembly parallel to S3 Radius Rods to align bolts more easily. There is also a hole on underside of frame to assist with threading nut onto bolt. See Picture D, E, and F.)*
- 8.) Install S3 Radius Rods (OEM or aftermarket) into bearing carrier, ensuring brake line routes over radius rods. Hand tighten only.
- 10.) Install S3 Upper Radius Rods into radius rod plate using OEM hardware. Hand tighten only. *(Pro Tip : Have an assistant manipulate hub assembly parallel to S3 Radius Rods to align bolts more easily.)* See Picture G and H.
- 11.) Final tighten all bolts (except heim jam nuts) to factory spec. *(Pro Tip : Red threadlocker is recommended.)*
- 12.) Reinstall plastic brake line cover.
- 13.) Reinstall wheels/tires to factory spec.
- 14.) Check alignment. Roll RZR back and forth to settle suspension. If any adjustment is needed, loosen S3 Upper Radius Rod from radius rod plate and adjust heim. Tightening heim joint will decrease overall S3 Radius Rod length (bringing top of tire inwards towards RZR) and vice versa.
- 15.) Once alignment is set, tighten jam nuts on heim joints. *(Pro Tip : Red threadlocker is recommended.)*
- 16.) Reinstall rear fascia using OEM hardware.
- 17.) Test drive RZR and recheck all fasteners.

Thank you for choosing S3 Power Sports! Let us know if you have any questions! 855-221-7097.

Picture A



2020+ Polaris RZR Pro XP Billet Upper Radius Rods # S3172



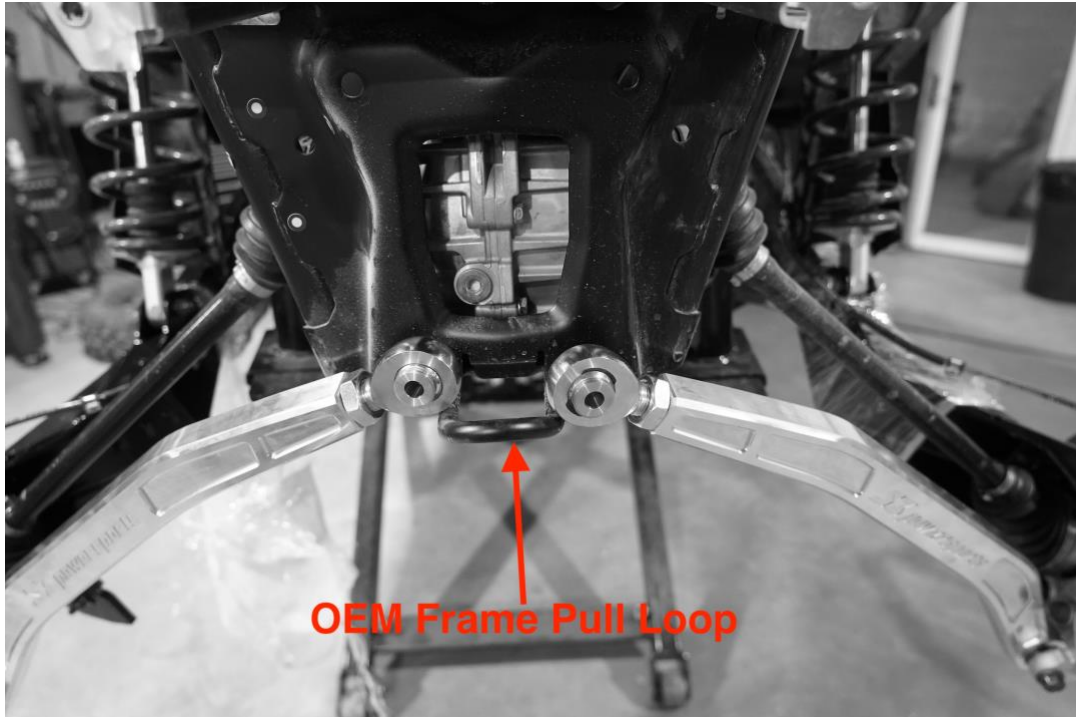
Picture B



Picture C



2020+ Polaris RZR Pro XP Billet Upper Radius Rods # S3172



Picture D



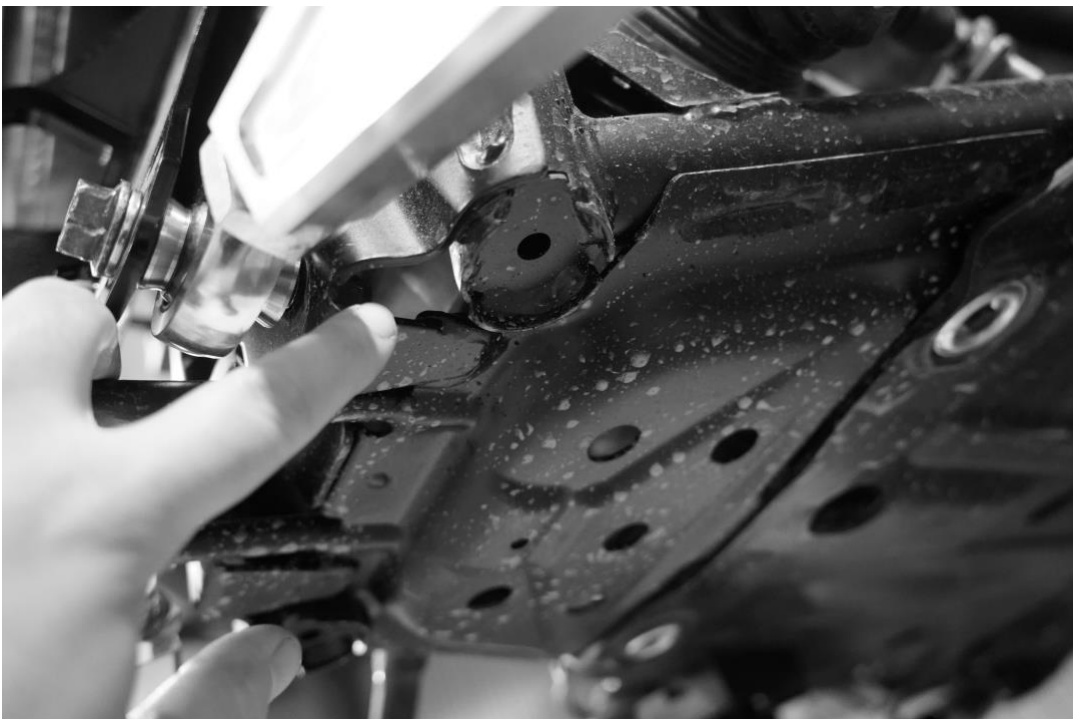
Picture E



2020+ Polaris RZR Pro XP Billet Upper Radius Rods # S3172



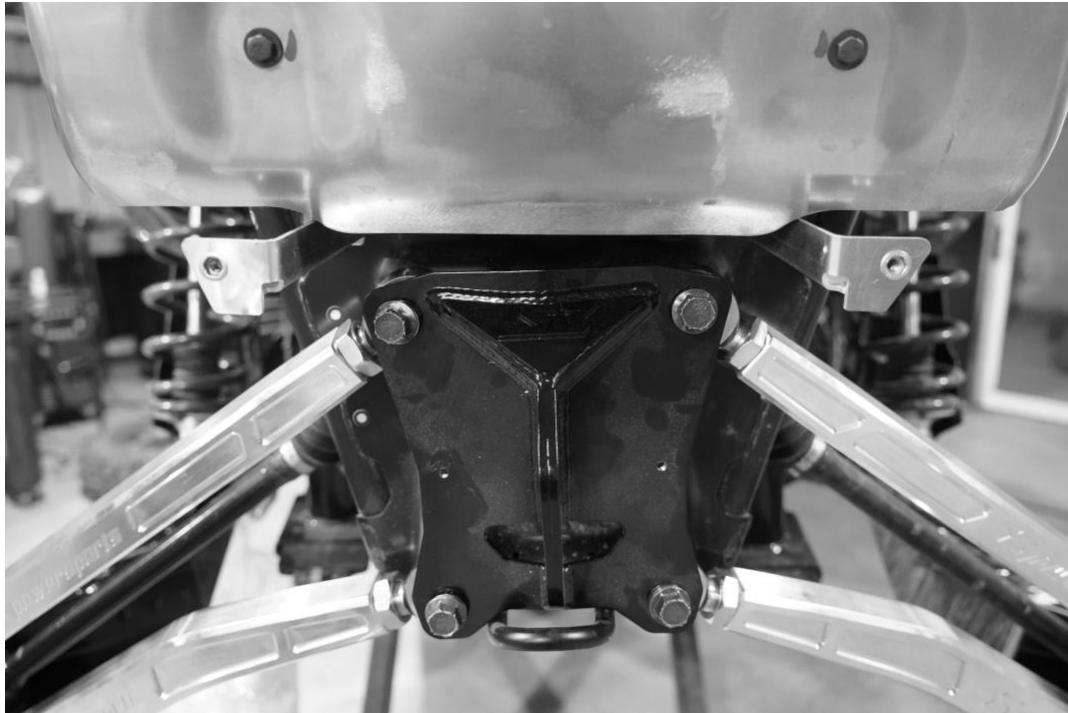
Picture F



Picture G



2020+ Polaris RZR Pro XP Billet Upper Radius Rods # S3172



Picture H

