



**MADE FOR FIRST. BUILT TO LAST.**

DISCLAIMER:

PRODUCTS MADE BY L AND W FAB AND MACHINE INC. ARE INTENDED TO FIT YOUR STOCK UTV UNLESS OTHERWISE SPECIFIED. INSTALLING, MODIFYING, OR REMOVING ANY COMPONENTS (FACTORY OR AFTERMARKET) NOT SUPPORTED BY L AND W AND THE INSTRUCTIONS HEREIN WILL VOID YOUR WARRANTY. FOR MORE INFORMATION ON INSTALLATION, WARRANTY, OR PRODUCT USE PLEASE CALL US AT (770) 445-9778

## POLARIS RZR SEAT LOWERING BASE

FITMENT: RZR 900S, 1000, 1000S, TURBO, TURBO S, AND GENERAL.



INSTALLATION MANUAL

# PARTS LIST:

Item #	Part #	Description	Qty.
1	N/A	Seat Base	2
2	N/A	Seat Base Latch Housing	2
3	N/A	Seat Base Shims	8
4	N/A	1/4x20 - 1 1/4 Button Head Screws	4
5	95462A032	1/4x20 Slim Nylock Nuts	4

# TOOLS:

Tool	Qty.
4mm Hex Key	1
T27 Torx	1
7/16 Wrench	1
10mm Wrench or socket	1

## Parts:



## Hardware:



# INSTALLATION:

STEP 1: Lay out the supplied parts and hardware as shown on the parts list. Grab the latch on the back of the seat base and pull up on it and backward on the seat. Reference *figure 1* for the location of this latch. The seat will slide out and can then be removed from the vehicle. Once the seat is removed, lay it down with the base facing up so all components of the seat base are easily accessible.

Figure 1



STEP 2: Remove all six of the rubber grommets on the bottom of the base. An example is shown in *figure 2* below.

NOTE: SAVE ALL OF THESE GROMMETS AS THEY WILL BE REUSED LATER IN THE ASSEMBLY.

Figure 2



**STEP 3:** Using a 10mm wrench or socket, remove the two 10mm nuts found on the bottom of the Seat Base Latch Assembly. Once the front face is removed, set aside the black plastic top plate shown in *figure 2*, then locate the metal shim plate shown in *figure 3* and discard it. Next, remove the pronged loop spring and plastic lever arm shown in *figure 4* and save them for later in the installation.

**Figure 3**



Save these parts.

**Figure 4**

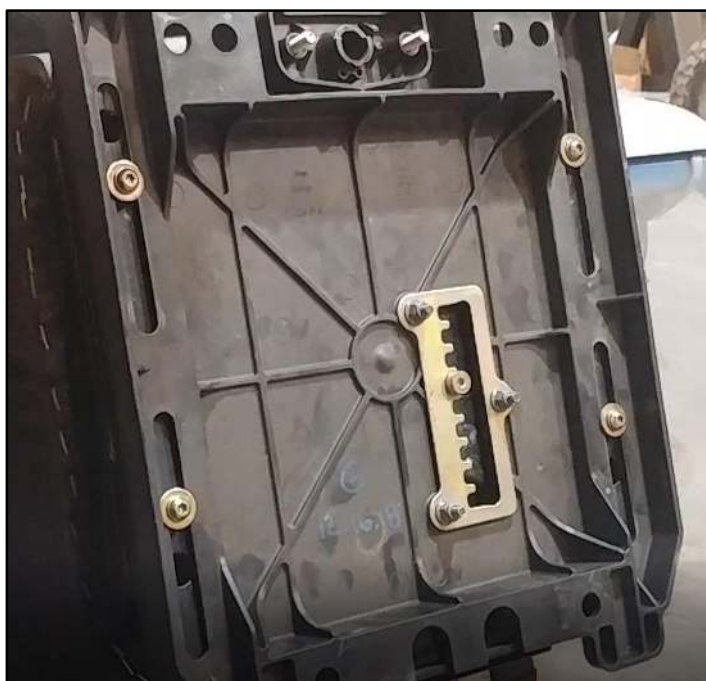


**STEP 4:** Once the lever assembly is removed we can remove the OEM seat base. To do so, use a T27 Torx bit to unscrew the 4 screws on the corners of the seat base. These are shown in *figure 5* below.

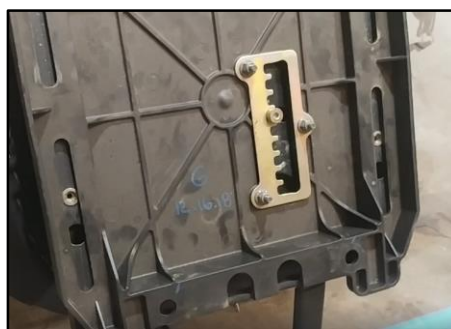
**NOTE: KEEP ALL HARDWARE INCLUDING SCREWS, BUSHINGS, AND WASHERS. THESE WILL ALL BE USED TO ATTACH THE NEW SEAT BASE AND ARE IMPERATIVE TO ITS CORRECT FUNCTION.**

Once the screws are removed, simply pull on the sliding lever and remove the OEM seat base. This is shown in *figure 6 & figure 7*.

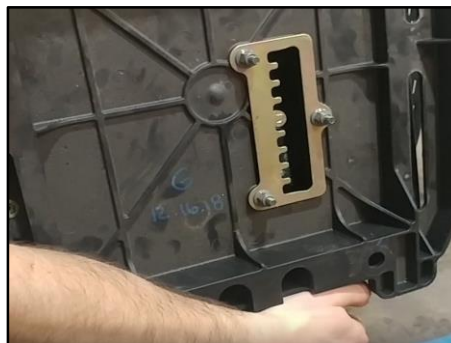
**Figure 5**



**Figure 6**



**Figure 7**





**STEP 5:** Now we will assemble the Seat Base Latch Housing to be installed on your new seat base. Set aside one housing and the spring and lever from the previous step. Orient the housing and insert the lever as shown in *figure 8*. Once these components are in place, insert the loop spring's prongs into the small holes as shown in the previous figure. Next press the spring into the groove of the lever as shown in *figure 9*. Once these steps are complete, press hard on the prongs of the loop spring until they are completely inserted and the front profile of the assembly is flat as shown in *figure 10*.

Figure 8



Spring Prong Holes

Figure 9



Position 1



Position 2

Figure 10



STEP 6: With the latch assembly and black plastic top plate in hand we can begin to attach the assembly to the seat base. First orient the assembly on the back of the seat base as shown in *figure 11*. Next position the top plate in front of the seat base as shown in *figure 12*. Finally use two of the 1/4x20 button head screws and two of the slim 1/4x20 nylock nuts to secure the assembly to the seat base as shown in *figure 13* below.

This assembly should be tightened as much as possible while still allowing the assembly to freely move up and down. This is to allow for later adjustment and is IMPERATIVE to correct installation of the seat base.

Figure 11



Figure 12



Figure 13



**STEP 7:** Install the rubber grommets from step 2 in the two holes on the front and four holes on the back of the seat base. These will push into place in the 1/2in holes and can be manipulated a bit easier with a small dab of assembly grease or a silicone-based lubricant if they are dry. Be sure to install them on the side of the base where the L&W logo is reversed as shown in *figure 15*.

**STEP 8:** Bring the seat base back to the vehicle and slide the front tabs under the seat frame bar then lower the latch over the seat pin. Push down on the rear of the seat base until the latch clicks signifying it has locked.

**NOTE: DO NOT PULL THE LEVER AS YOU LOWER THE SEAT. IT WILL DISLodge THE SPRING.**

Once the latch is locked pull it toward the front of the seat base. Grab your 7/16 wrench and 4mm hex key and tighten up the latch as shown in *figure 14*. Once tightened test the function of the latch by releasing and locking the latch repeatedly to ensure the operation is smooth.

**Figure 14**



**STEP 9:** Collect the new seat base, four T27 screws, and bushings from step 4. Place the seat base on the bottom of the seat with the sliding lock in one of the grooves on the slide plate. Hand tighten the four T27 screws in their designated holes with one shim behind each screw as shown in *figure 16* then go behind them with a wrench or ratchet and tighten them securely. The assembly should look like *figure 15* below.

**Figure 15**





**STEP 10:** Test the sliding action of the seat base by pulling the sliding arm and cycling the base backward and forward. It will likely be tight due to powder coat and will need to be cycled many times to smooth the action. If the base has play between itself and the seat, add another shim on each screw until play is minimal and the base can still slide. The quantity of shims should be evenly distributed across the seat base for correct function.

**Figure 16**



**STEP 11:** Test the action of the lever by installing the seat then engaging and disengaging the seat latch repeatedly. Ensure that the seat slides smoothly and reliably. Shake the seat while observing the base. Make sure the base itself doesn't move independently of the seat. If all of these variables are correct, the install is now finished and can be repeated on the other seats in the vehicle.

If...	Then...
The seat base isn't sliding well...	With the seat removed, have a partner hold the seat and sliding lever while you force the base back and forth repeatedly. Do this until the action smoothens out. A light coating of graphite or white lithium can be used to assist the movement.
The seat base is shifting around independent of the seat...	Add a shim on the bottom of each T27 screw until the base feels secure to the seat.
The seat latch isn't locking in after assembly but BEFORE tightening the latch assembly completely (step 9)...	This latch is going to keep your seat from ejecting in case of an emergency; It is stronger than you would believe and a hard thrust is not going to damage the latch. If the latch will not seat after a few firm thrusts, remove the seat and reinstall the latch according to instructions before trying again.



TEMPLE, GA 30179

(770) 445-9778

**THANK YOU FOR CHOOSING L&W FAB AND MACHINE INC!**