



TRAILARMOR.COM
839 HWY 2 CORINTH, MS 38834
(662) 233-5700

Installation Instructions

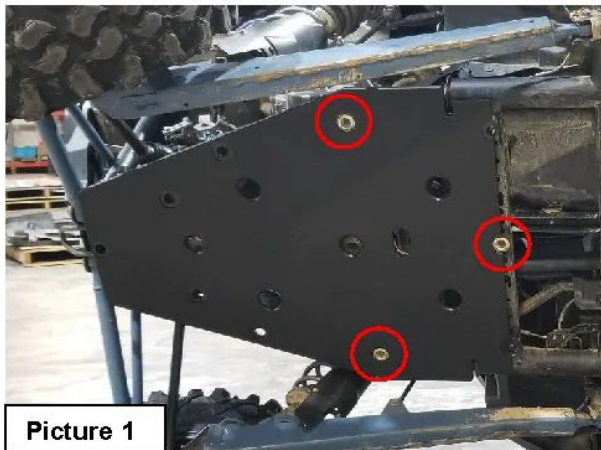
Trail Armor Polaris Pro XP Full Skids TA012FULLSKID-PRO-XP

Warnings and Product Liability Disclaimer

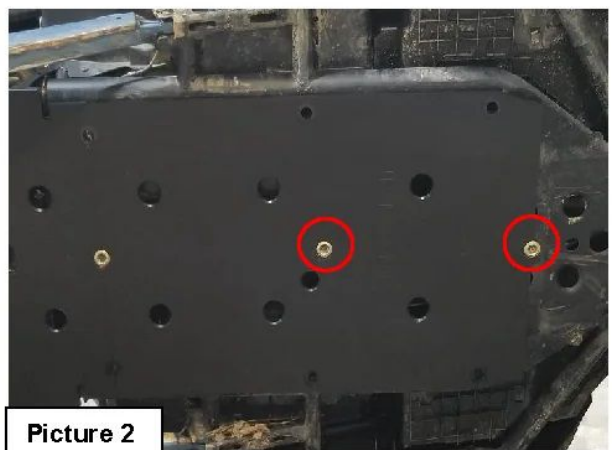
This product is intended to be used as a cosmetic accessory under normal equipment operation and should not be depended upon or used as a safety device. Manufacturer assumes no liability for personal injury or equipment damage as the result of use or installation of this accessory. User assumes all risk. User should carefully read all instructions prior to installation. All Trail Armor products are designed, engineered, and fit to new vehicles and their specifications. Damage, modifications, and extreme wear may cause and require modifications to the product and/or your vehicle to insure proper fitment.



Instructions



Picture 1



Picture 2

- A. Remove OEM hardware and skids. Retain all fasteners as they will be reused.
- B. Locate Panel C of the Trail Armor skid set. Also, locate three OEM bolts and washers. Holding Panel C into position, insert one screw and washer into each of the three holes as shown in Picture 1. Loosely tighten.
- C. Locate Panel B of the skid set. Also, locate two OEM bolts and washers. Slide Panel B underneath the center washer of Panel C. Insert one OEM bolt and washer at the center of the panel and the other at the front center. See Picture 2. Loosely tighten.



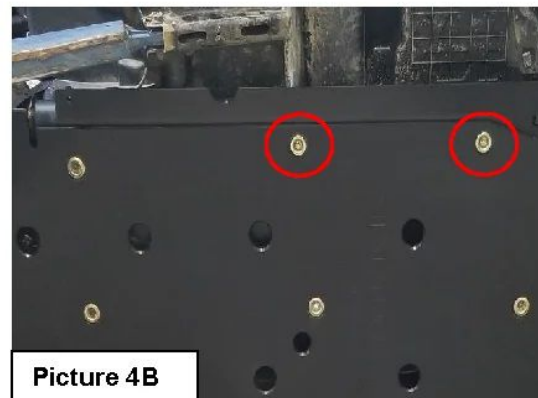
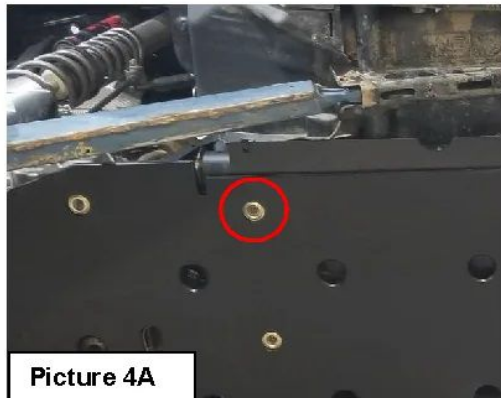
TRAILARMOR.COM
839 HWY 2 CORINTH, MS 38834
(662) 233-5700

Installation Instructions

- D. Locate the metal slider brackets from the skid set. Also, locate twelve $\frac{1}{4}$ -20 u-nuts. Slide the u-nuts onto the bracket as shown in Picture 3A. Note that there is a center bend and a tab on one end. Look closely as to how the u-nuts are installed.



- E. Locate one OEM bolt and one bowl washer. Slide the bracket behind Panels B and C. Insert one OEM bolt and washer at the joint of the panels. See Picture 4A.
- F. Locate two supplied $\frac{1}{4}$ -20 x 1" serrated flange bolts and two supplied bowl washers. Insert one bolt and washer into each of the outer holes of Panel B. See Picture 4B. Repeat Steps E and F for the opposite side.

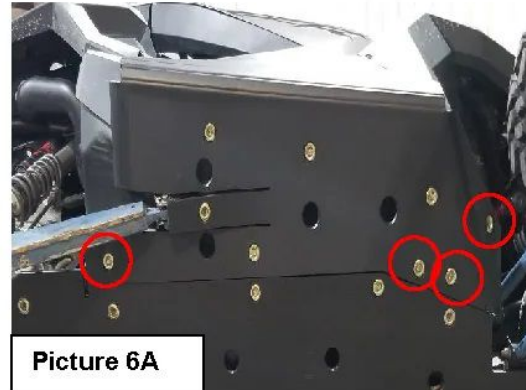
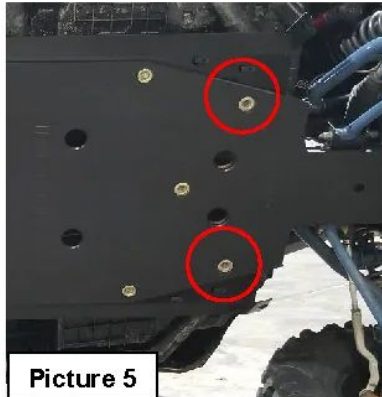




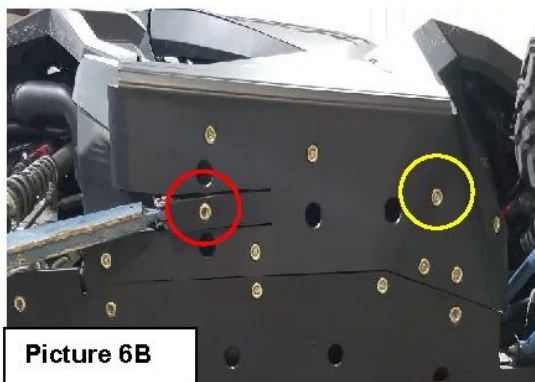
TRAILARMOR.COM
839 HWY 2 CORINTH, MS 38834
(662) 233-5700

Installation Instructions

- G. Locate Panel A of the skid set. Also, locate two OEM screws and bowl washers. Holding Panel A into position, insert one screw and washer into each of the rear holes of Panel A. See Picture 5.



- H. Locate Panel D of the skid set. Also, locate four supplied $\frac{1}{4}$ -20 x 1" serrated flange bolts and four supplied bowl washers. Insert one into each of the holes as shown in Picture 6A.
- I. Locate one OEM screw and one bowl washer. Insert the screw and washer as shown in Picture 6B (shown in RED). See Picture 6B.
- J. Locate one supplied M6-1.0x40mm flange bolt and one supplied bowl washer. Insert the screw and washer as shown in Picture 6B also (shown in YELLOW). See Picture 6B also.



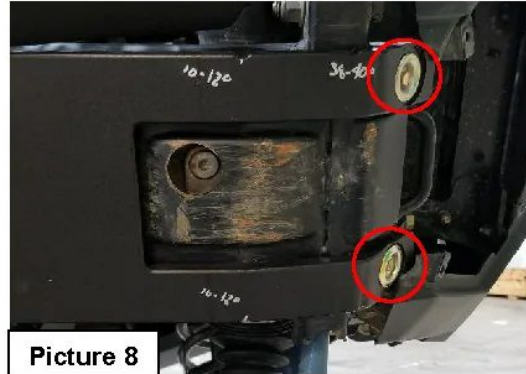
- K. Locate two supplied M6-1.0x25mm flange bolts and two supplied bowl washers. Insert these into the rear outer holes of Panel D. See Picture 6C.



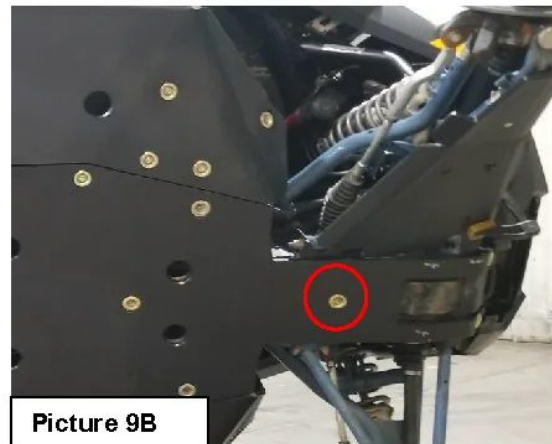
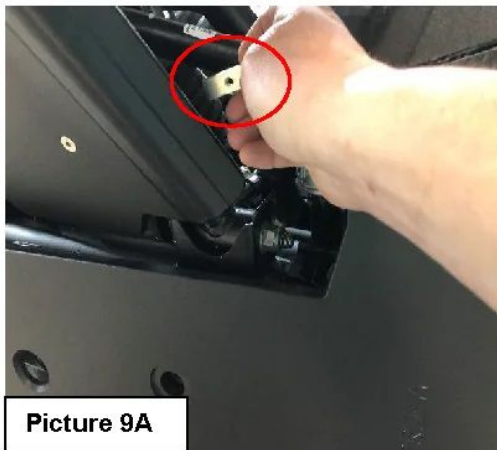
TRAILARMOR.COM
839 HWY 2 CORINTH, MS 38834
(662) 233-5700

Installation Instructions

- L. Locate one supplied #14 x 1-1/4" TEK self-drilling screw and one supplied bowl washer. Insert the screw and bowl washer into the remaining hole of Panel D. See Picture 7.



- M. Repeat Steps H-L for the opposite side.
- N. Locate two supplied #14 x 1-1/4" TEK self-drilling screws and two supplied bowl washers. Insert these into the front two holes of Panel A. See Picture 8. Due to the thickness of the metal at the front, **these may need to be pre-drilled.**
- O. Locate one supplied 1/4-20 x 1-1/2" thread cutting screw, one bowl washer, and one 1/4-20 T-nut. Insert the screw and washer into the remaining hole of Panel A. Secure with the 1/4-20 t-nut. The t-nut will be placed inside the frame rail which can be accessed from behind the front wheel. See Picture 9A and 9B.

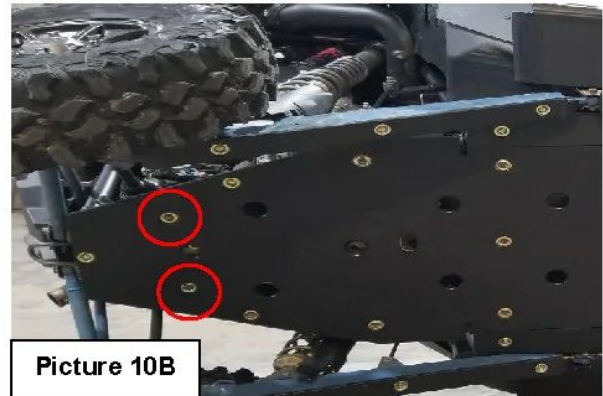




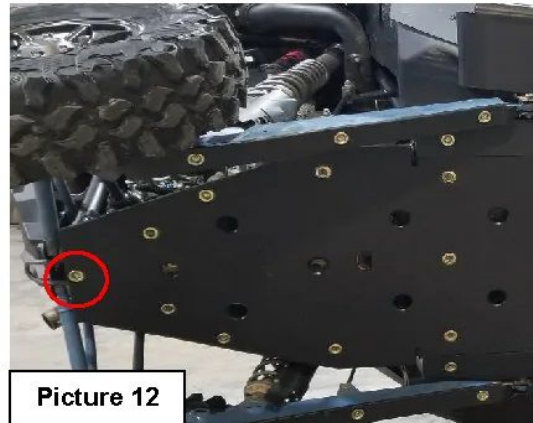
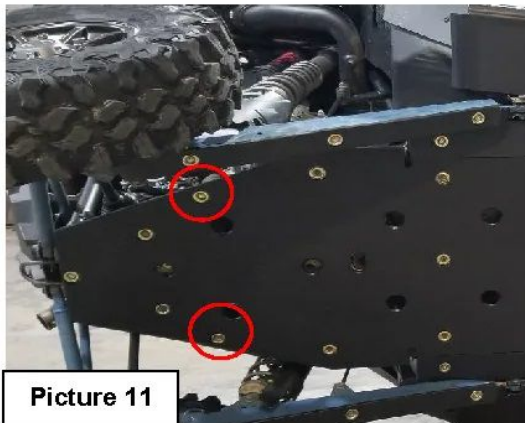
TRAILARMOR.COM
839 HWY 2 CORINTH, MS 38834
(662) 233-5700

Installation Instructions

- P. Locate the rear spacer from the skid set. Also, locate two OEM bolts and bowl washers. Slide the spacer in behind Panel C and align the holes of the spacer with the holes of Panel C. See Picture 10A. Insert the two OEM bolts into the holes as shown in Picture 10B. These should hold the spacer in place until the final screws can be installed.



- Q. Locate two supplied #14 x 1-1/2" TEK self-drilling screws and two supplied bowl washers. Insert these into the front remaining holes. See Picture 11.



- R. Locate one supplied #14 x 2" TEK self-drilling screw and one supplied bowl washer. Insert these into the remaining hole of Panel C. See Picture 12. Tighten all fasteners securely but do not overtighten.



TRAILARMOR.COM
839 HWY 2 CORINTH, MS 38834
(662) 233-5700

Installation Instructions

S. See Picture 13 for final install. Standard sliders shown.

