

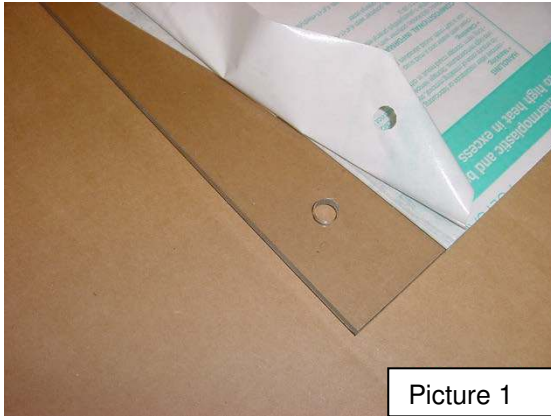


Installation Instructions for CoolFlo Windshield for TERYX4 LE, TERYX4 Camo, TERYX4 12 -15, KAW TERYX, TERYX LE, TERYX Camo 14 – 15 and all 2016+ TERYX 4/TERYX 2 TA010SHLD-KAW4

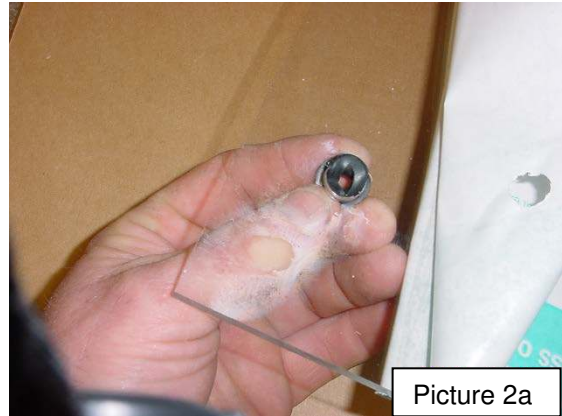
Warnings and Product Liability Disclaimer

This product is intended to be used as a cosmetic accessory under normal equipment operation and should not be depended upon or used as a safety device. Manufacturer assumes no liability for personal injury or equipment damage as the result of use or installation of this accessory. User assumes all risk. User should carefully read all instructions prior to installation.

- A. To begin installation of the Trail Armor CoolFlo Windshield. Carefully lay upper and lower windshield panels on flat surface; peel back the protective sheeting around the outer edges only enough to reveal the pre-drilled mounting holes. Do not peel the protective sheeting completely at this time! See picture 1.

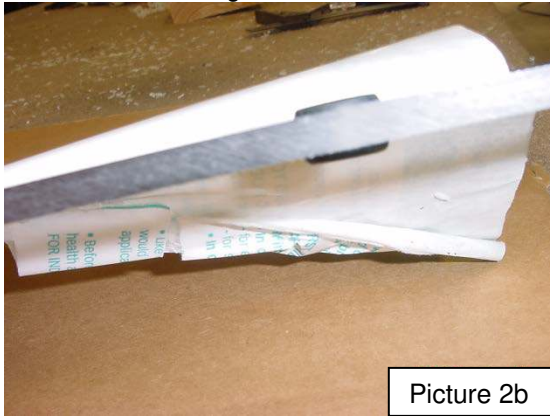


Picture 1



Picture 2a

- B. Insert supplied rubber grommets into the pre-drilled holes. See picture 2a. Properly installed, the grommets' shoulder edges are uniform on both sides of the windshield. See picture 2b.



Picture 2b



Picture 3

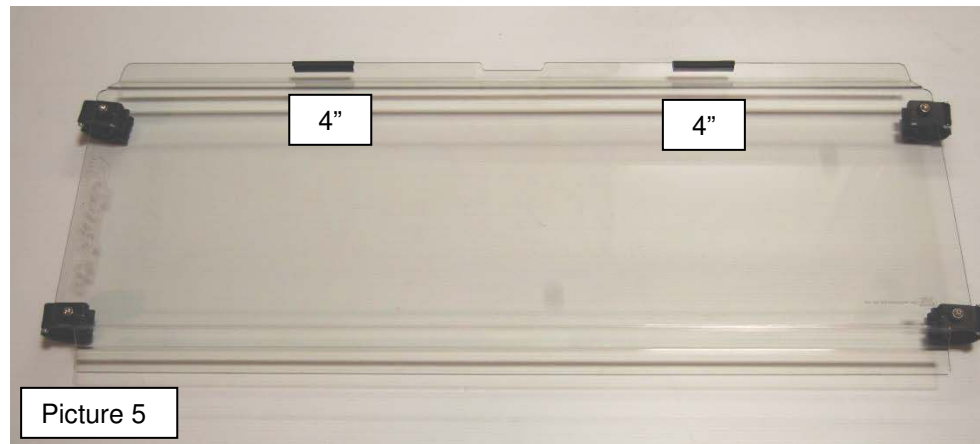
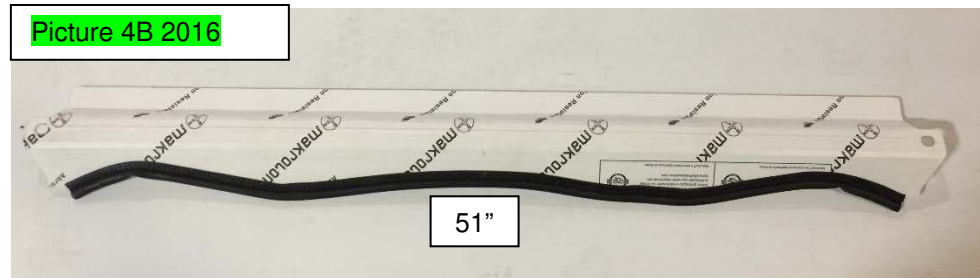
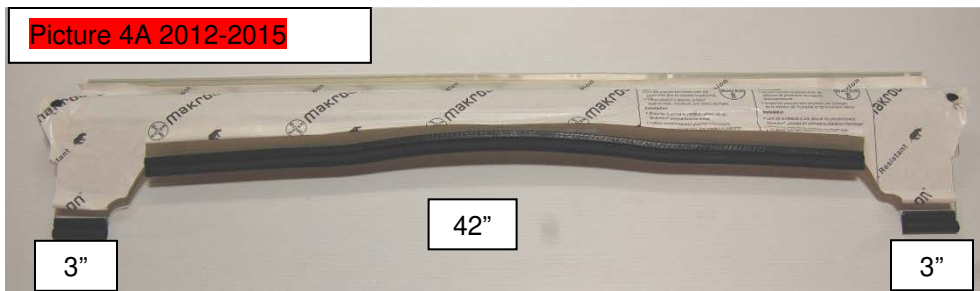
- C. Place large black plastic sleeve spacers with flanged edge into each rubber grommet inserted in the windshield panel. Flange goes on the front (exterior) side of the windshield. See picture 3. Locate the stick-on upper joint trim: this serves as a cushion between the two windshield panels and has a thick edge and a thin edge. Apply the clear stick on seal to the outside upper edge of lower panel turning its thick edge to the top. Apply evenly along the upper edge of lower panel. Avoid stretching during application. See picture 3A and 3B.



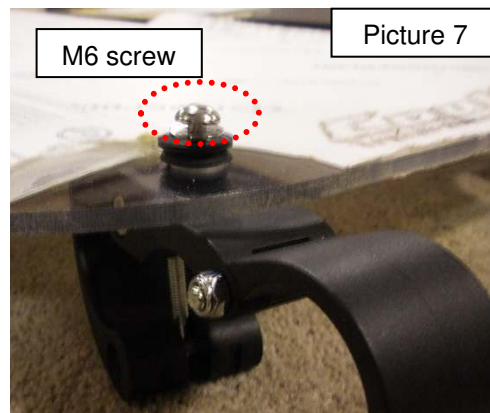
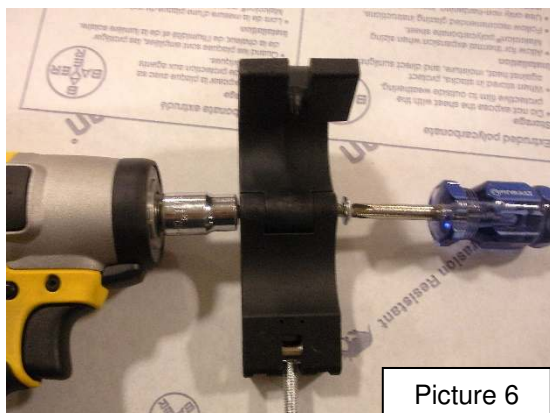
Picture 3A



Picture 3B



- D. On 2012-2015 Models locate the 3 push-on edge trim gaskets. There are two 3" pieces and one 42" piece. Install these three pieces of push-on edge trim gasket to the bottom contour cut edge of the lower windshield panel. Roll on by hand. See Picture 4. On 2016 Models locate one 51" push-on edge trim gaskets. Install these piece of push-on edge trim gasket to the bottom contour cut edge of the lower windshield panel. Roll on by hand. See Picture 4B. Locate the two 4" pieces of side bulb seal. Install these to the top portion of the upper windshield so that the bulb is facing toward the vehicle when windshield is installed. See Picture 5.
- E. Discard rectangular rubber adapter pad that comes with each fast clamp. You will not need these adapter pads. Tighten hinge joints on all Trail Armor Fast Clamps enough to where the screws grab the nylock nuts but the clamps will still freely open and close. See Picture 6.



- F. Install Trail Armor Fast Clamp with the hinge tightened in step E to the inside/interior of the upper and lower windshield panels. Secure with M6 Chrome Torx screws. See Picture 7. Tighten until rubber grommet inside the windshield's pre-drilled holes has pressure. **Do not overtighten! If you overtighten, you will pull out the brass insert and break the black spacer with the flanged edge.**

- G. With assistance, install the lower windshield on to the vehicle so that the bulb seal on the lower portion is sealed at the vehicles Dash panel. Position upper windshield onto the vehicle's roll cage. The upper windshield should overlay the lower windshield. See picture 8A & 9A for 2012-2015 – 8B & 9BA for 2016. Be sure the side bulb seal on the upper windshield is against the upper portion of the roll cage.
- H. Clamp into place as shown in Picture 10 – 13. Rotate the fast clamp's camlock clockwise to adjust tension on your roll cage. Secure Fast Clamps.



Picture 8A 2012-2015



Picture 9A 2012-2015



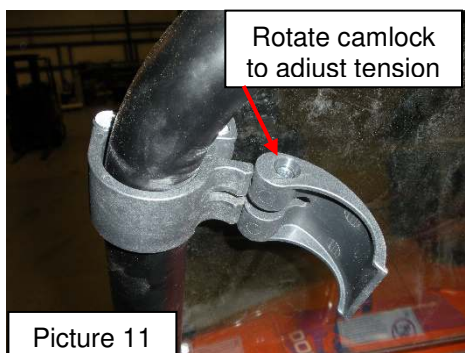
Picture 8B 2016



Picture 9B 2016



Picture 10



Picture 11



Picture 12



Picture 13