



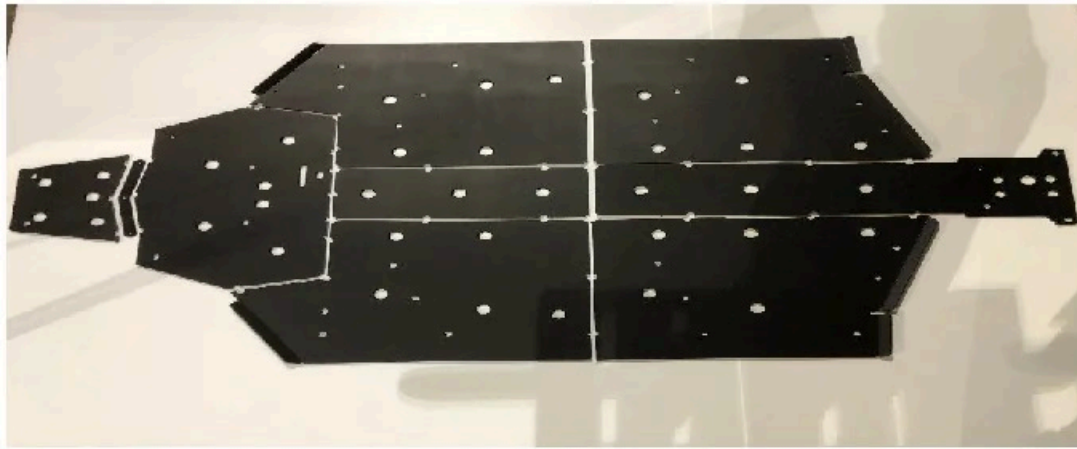
TRAILARMOR.COM
839 HWY 2 CORINTH, MS 38834
(662) 233-5700

Installation Instructions

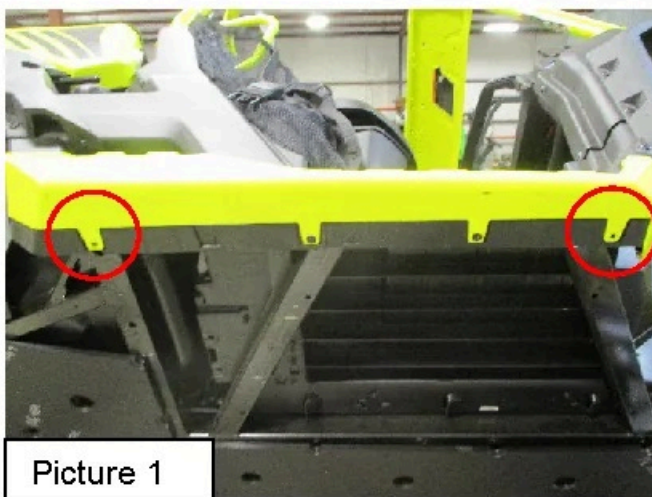
Trail Armor Can Am Defender Max Full Skids TA012FULLSKID-CADMAX

Warnings and Product Liability Disclaimer

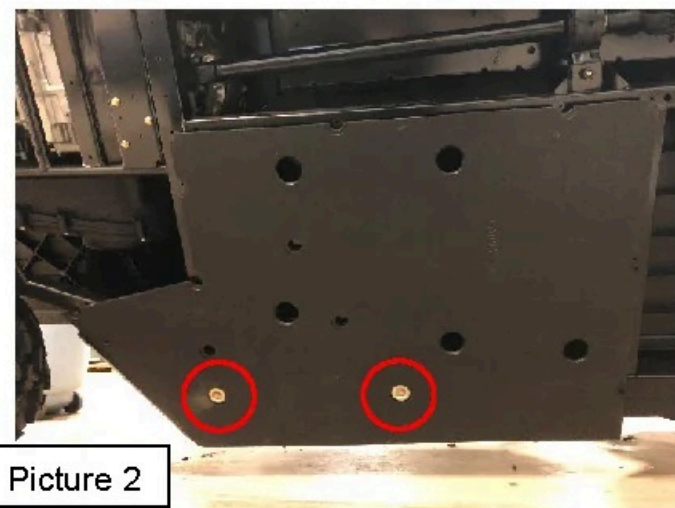
This product is intended to be used as a cosmetic accessory under normal equipment operation and should not be depended upon or used as a safety device. Manufacturer assumes no liability for personal injury or equipment damage as the result of use or installation of this accessory. User assumes all risk. User should carefully read all instructions prior to installation. All Trail Armor products are designed, engineered, and fit to new vehicles and their specifications. Damage, modifications, and extreme wear may cause and require modifications to the product and/or your vehicle to insure proper fitment.



Instructions



Picture 1



Picture 2

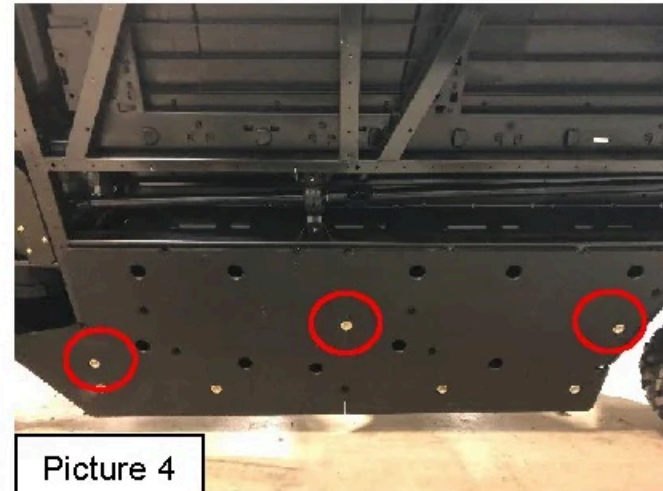
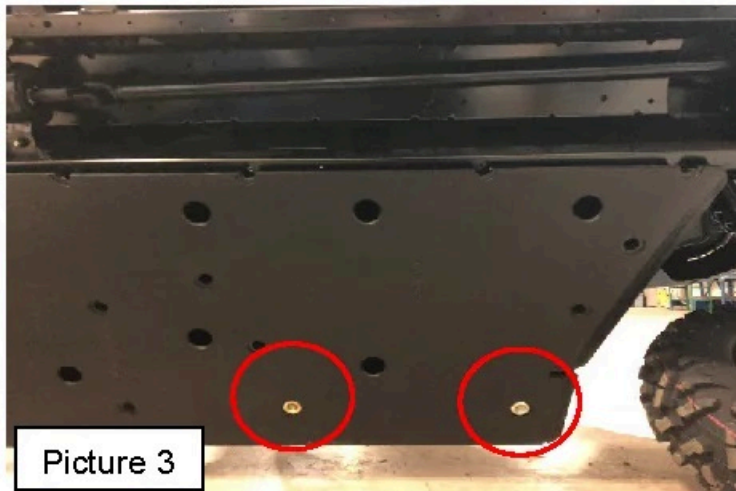
- A. For easier installation, tilt vehicle onto its side and support securely. Remove OEM hardware and skids by drilling out rivets or knock the heads of the rivets off with a hammer and chisel and center punch the remaining pieces of rivets out. For vehicles which have metal rock sliders on them, the front and rear pop rivets will need to be removed as well. See Picture 1. Also, the small metal lip on the rear of the front differential plate will need to be hammered (bent) up inside the frame rail for the skid plates to fit properly.
- B. Locate two supplied #14 x 1-1/2" TEK self-drilling screw and two supplied bowl washers. Also, locate Panel H from the skid plate set (DRIVER REAR). Insert two screws and bowl washers into each of the two rear outer holes of Panel H. Loosely tighten. See Picture 2.



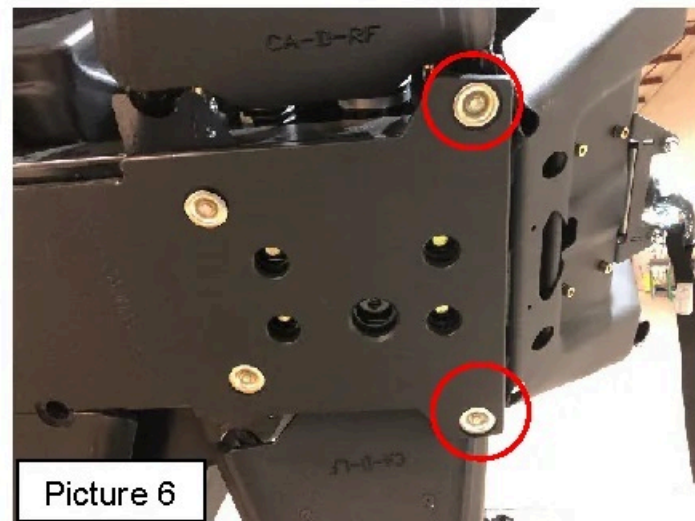
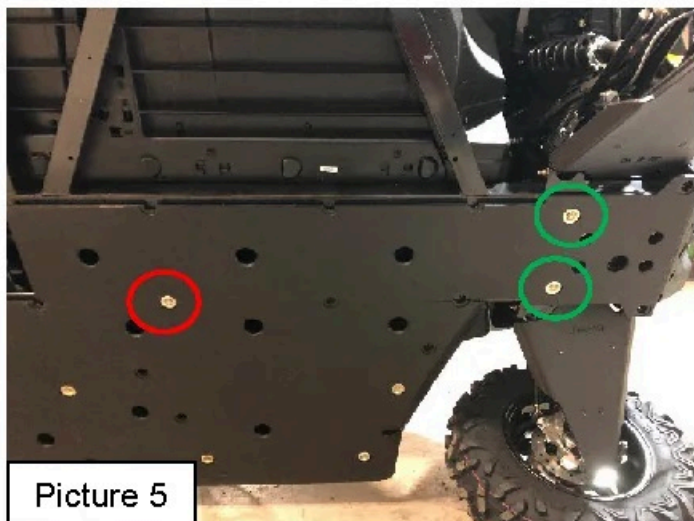
TRAILARMOR.COM
839 HWY 2 CORINTH, MS 38834
(662) 233-5700

Installation Instructions

- C. Locate two supplied #14 x 1-1/2" TEK self-drilling screws and two supplied bowl washers. Also, locate Panel G from the skid plate set. Insert two screws and bowl washers into each of the front outer holes of Panel G. Loosely tighten. See Picture 3.
- D. Locate three supplied #14 x 1-1/4" TEK self-drilling screws and three supplied bowl washers. Insert a screw into each of the three holes in Panels G and H. Loosely tighten. See Picture 4.



- E. Locate (3) supplied #14 x 1-1/4" TEK self-drilling screws and three supplied bowl washers. Also, locate Panel A from the skid plate set. Insert one screw and bowl washer into each of the two holes behind the front differential and one towards the rear of Panel A. Loosely tighten. See Picture 5. (The 2 holes circled in green may need the bigger 5/16 TEK screws).



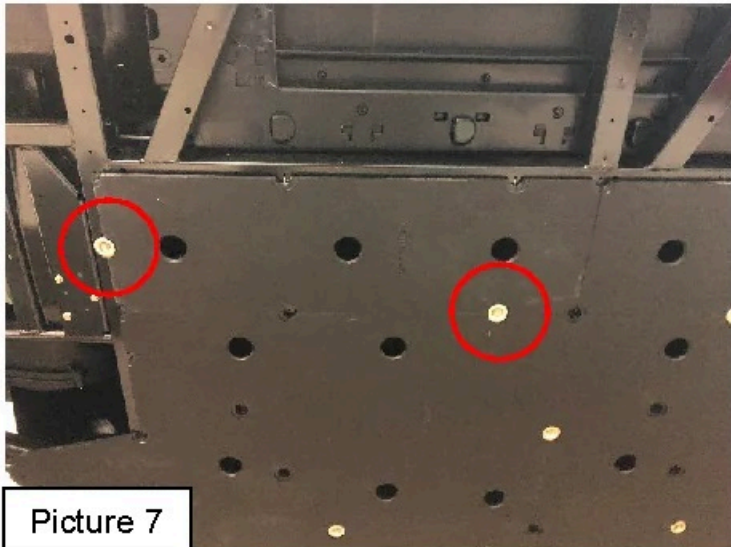
- F. Locate two supplied 1/4-20 x 3/4" thread cutting screws, two supplied bowl washers, and two supplied 1/4-20 nylock nuts. Insert the screws and washers through the front holes of Panel A and secure with the 1/4-20 nylock nuts. See Picture 6.



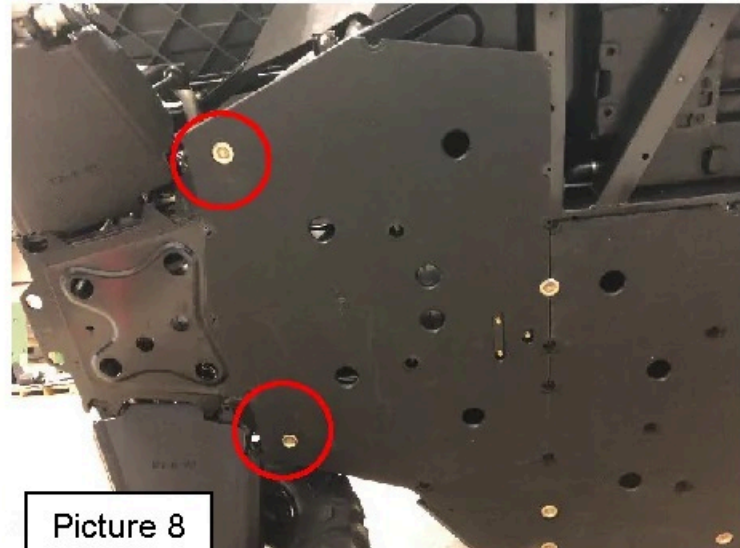
TRAILARMOR.COM
839 HWY 2 CORINTH, MS 38834
(662) 233-5700

Installation Instructions

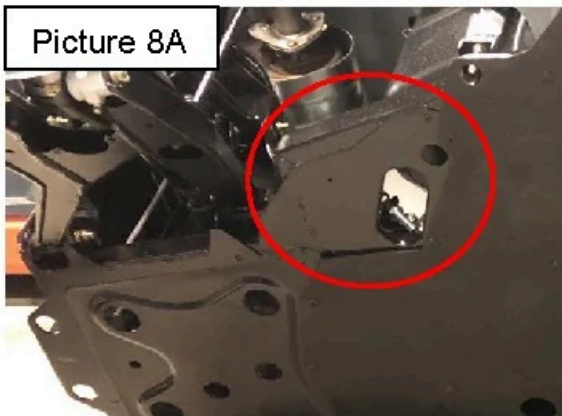
- G. Locate Panel B from the skid set. Also, locate two supplied #14 x 1-1/4" TEK self-drilling screw and two supplied bowl washers. Insert one screw and bowl washer into one of the lower holes of the center frame rail for support. Insert the other screw and bowl washer into the center hole at the rear of Panel B. Loosely tighten. See Picture 7.



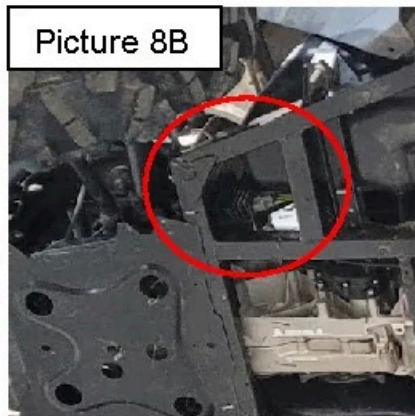
Picture 7



Picture 8



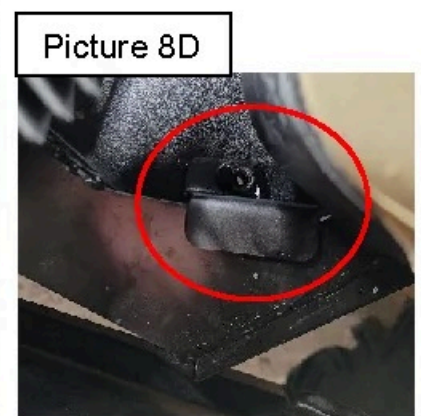
Picture 8A



Picture 8B



Picture 8C



Picture 8D

- H. Locate Panel C of the skid plates.

If your frame looks like Picture 8A just in front of the rear a-arms. Locate two supplied #14 x 1-1/4" TEK self-drilling screws and two supplied bowl washers. Slide Panel C under the center screw and washer of Panel B. Insert the two 1-1/4" screws and washers into the rear outer holes of Panel C. Loosely tighten. See Picture 8.

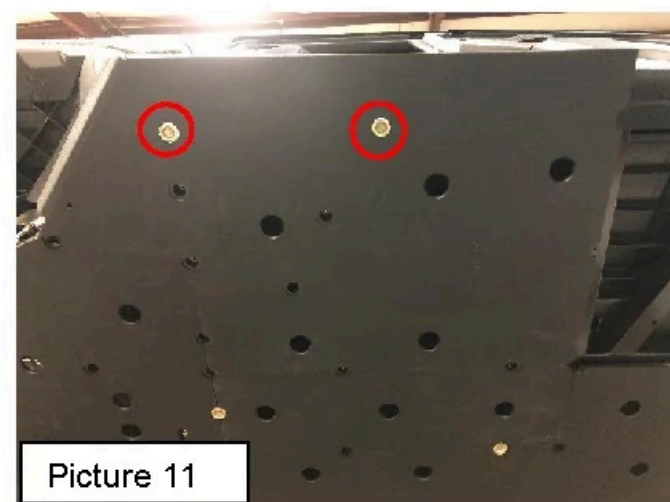
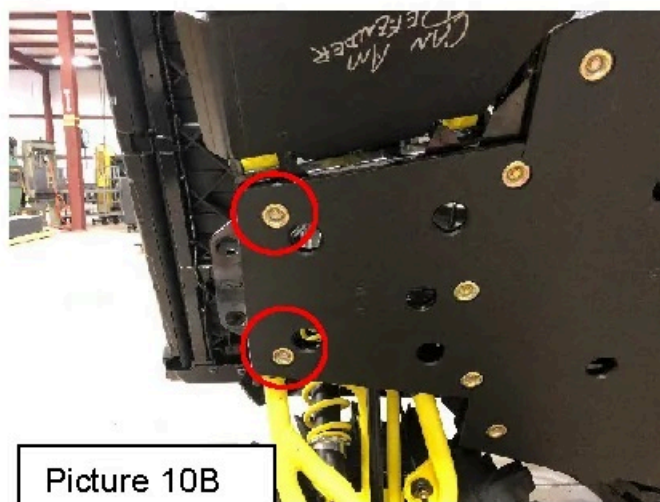
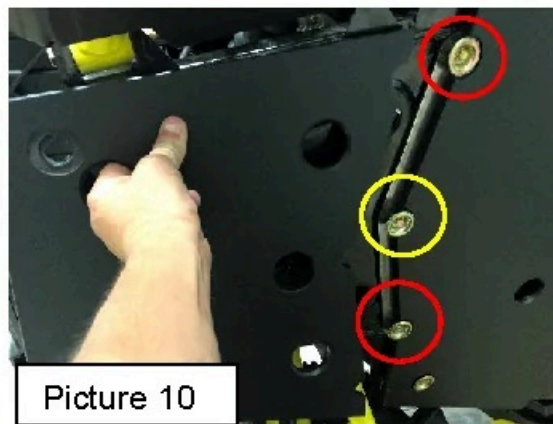
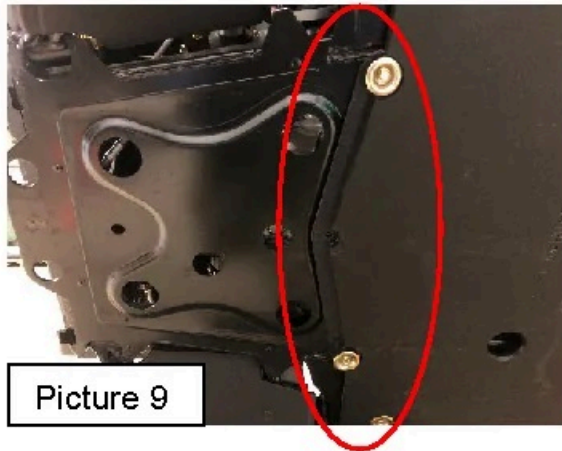
If your frame looks like Picture 8B just in front of the rear a-arms. Locate two 1/4"-20x1 Serrated Flange bolts, two supplied bowl washers and two supplied metal brackets stamped (CAD-SKD). Slide Panel C under the center screw and washer of Panel B. Install the brackets per Picture 8C & 8D. Insert one 1/4"-20x1 Serrated Flange and bowl washer thru the skid plate and into both metal brackets. Loosely tighten. See Picture 8.



TRAILARMOR.COM
839 HWY 2 CORINTH, MS 38834
(662) 233-5700

Installation Instructions

- I. Locate the 1/4" spacer from the skid set. Peel the paper from the two-sided tape and stick to the frame at the rear of Panel C. See Picture 9. Locate two supplied #14 x 1-1/4" TEK self-drilling screws and two supplied bowl washers (shown in RED). See Picture 10. Insert the screws and washers through the spacer and into the frame rail. Locate one supplied #14 x 1" TEK self-drilling screw and one supplied bowl washer (shown in YELLOW). Insert the screw and washer into the center hole of the spacer. ****NOTE- a 1" screw MUST be used at the YELLOW LOCATION because of the rear differential!!** Locate Panel D from the skid plate set. Slide Panel D underneath the screws and tighten. See Picture 10.
- J. Locate two supplied #14 x 1" TEK self-drilling screws and two supplied bowl washers. Insert these into the remaining holes of Panel C. See Picture 10B.

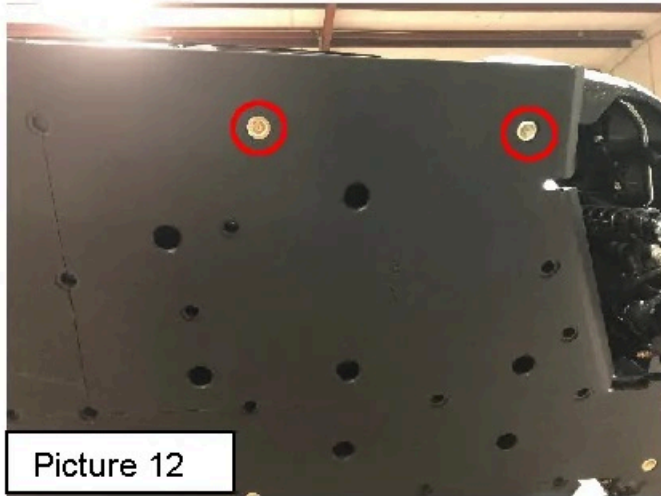


- K. Locate Panel F from the skid plate set. Also, locate two supplied #14 x 1-1/2" TEK self-drilling screws and two supplied bowl washers. While holding Panel F into position, insert the two screws and washers as shown in Picture 11.
- L. Locate Panel E from the skid plate set. Also, locate two supplied #14 x 1-1/2" TEK self-drilling screws and two supplied bowl washers. While holding Panel E into position, insert the two screws and bowl washers as shown in Picture 12.

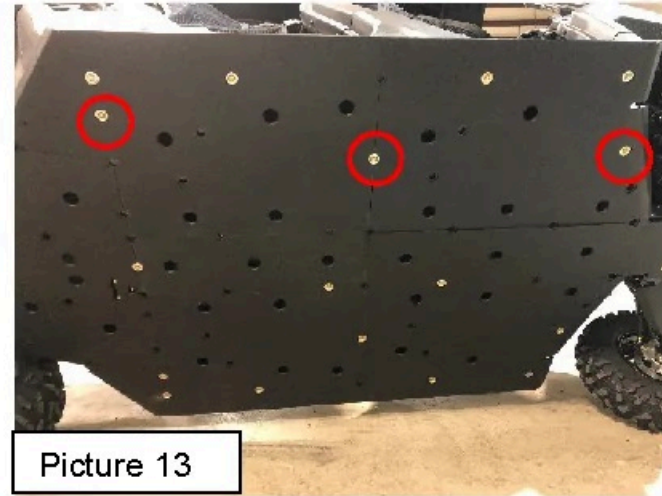


TRAILARMOR.COM
839 HWY 2 CORINTH, MS 38834
(662) 233-5700

Installation Instructions

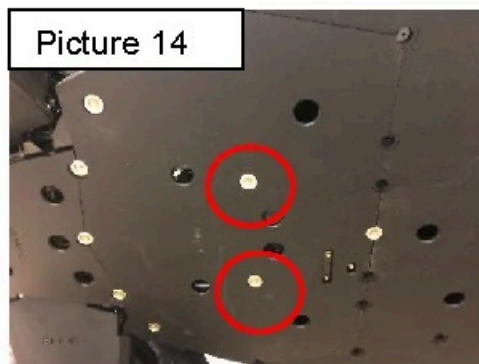


Picture 12

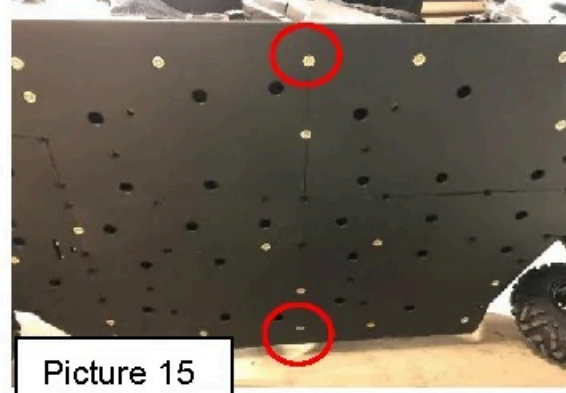


Picture 13

- M. Locate three supplied #14 x 1-1/4" TEK self-drilling screws and three supplied bowl washers. Insert one screw and bowl washer into each of the holes shown in Picture 13. Align all panels and tighten all fasteners installed up to this point. **DO NOT OVERTIGHTEN!**
- N. Locate two supplied #14 x 1" TEK self-drilling screws and two supplied bowl washers. Insert these into the center holes of Panel C. **** NOTE- A 1" screw MUST be used at these locations also!!** See Picture 14.



Picture 14



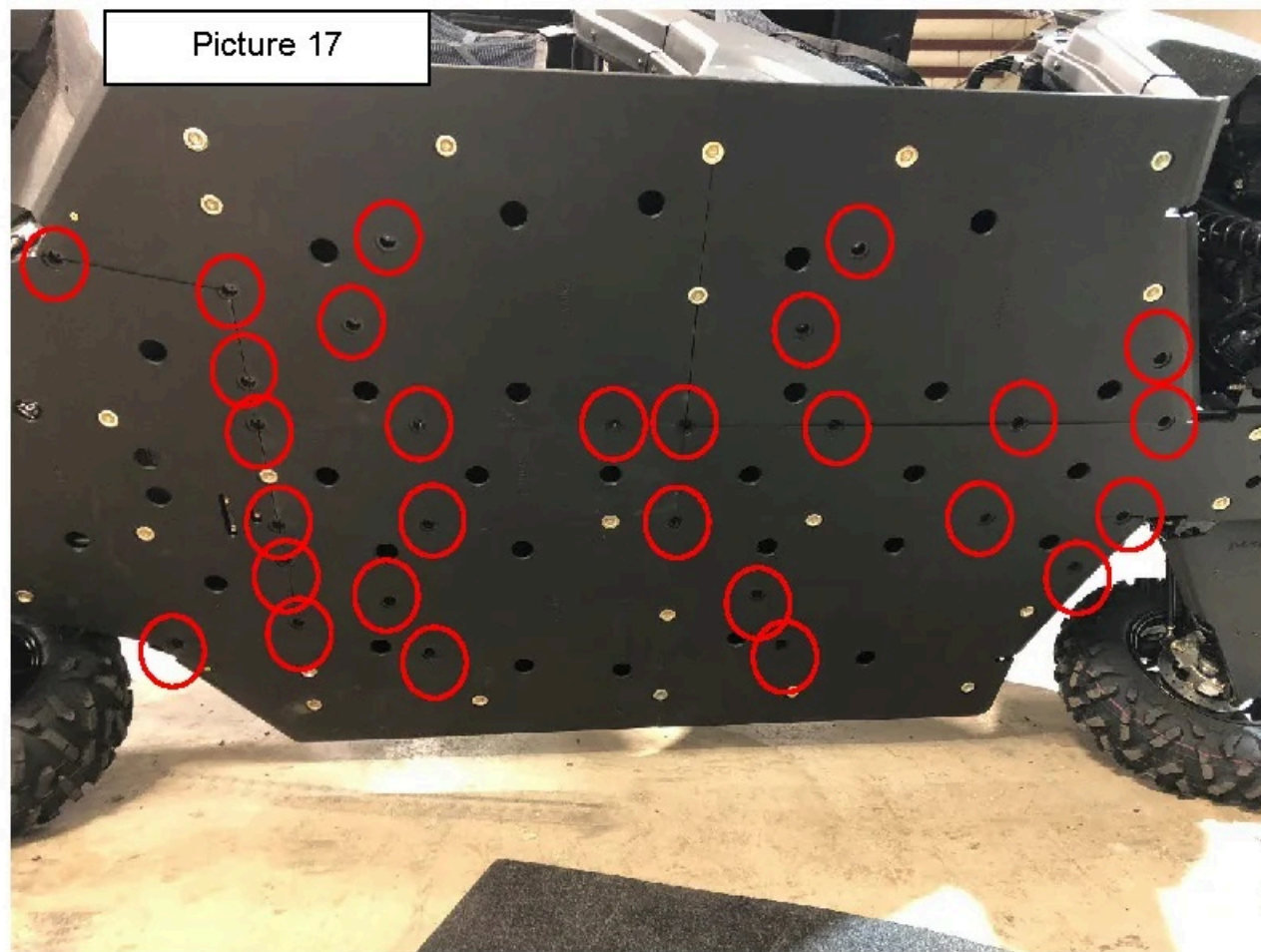
Picture 15

- O. Locate two supplied #14 x 1-1/2" TEK self-drilling screws and two supplied bowl washers. Insert these into the remaining outside holes at the lap joint of Panels E and F and the lap joint of Panels G and H. See Picture 15.



TRAILARMOR.COM
839 HWY 2 CORINTH, MS 38834
(662) 233-5700

Installation Instructions



- P. Locate twenty-eight supplied #14 x 1-1/4" TEK self-drilling screws and twenty-eight supplied bowl washers. Insert these into the remaining holes of all panels. See Picture 17. See Picture 18 for final install.

