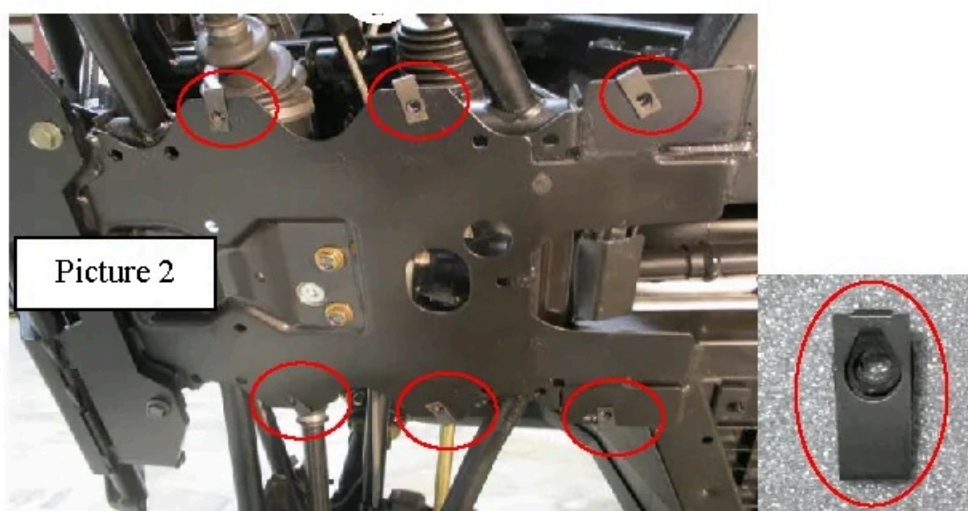


  
**Installation Instructions for** **Polaris Ranger XP 1000**  
**Full Skid with Integrated Side Sliders**  
**TA012FULLSKID-PR1000-18**

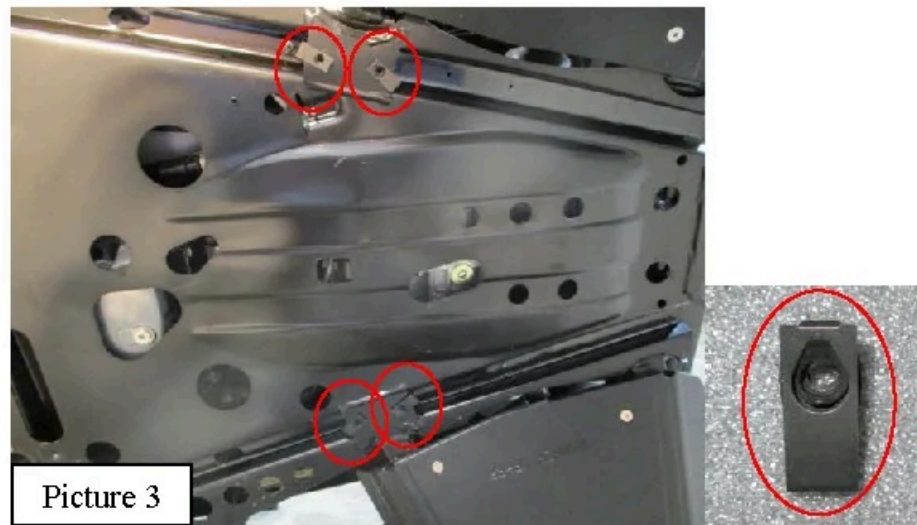
**Warnings and Product Liability Disclaimer**

This product is intended to be used as a cosmetic accessory under normal equipment operation and should not be depended upon or used as a safety device. Manufacturer assumes no liability for personal injury or equipment damage as the result of use or installation of this accessory. User assumes all risk. User should carefully read all instructions prior to installation.

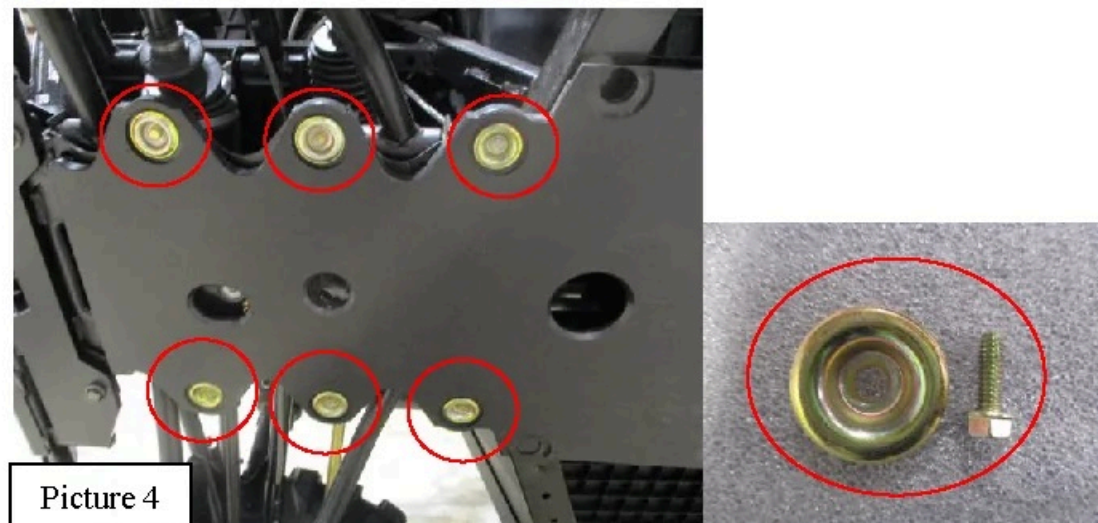
- A. Remove the battery from the vehicle if it is not a sealed-cell battery. To ease installation, gently tip vehicle onto its side and support securely. Remove the OEM skid pan. Discard. Also, the metal tab where the front center of the OEM skid plate was attached will need to be bent up inside the center of the vehicle. Using pliers, dead-blow hammer, etc., bend enough to install the Trail Armor skid plates. See Picture 1.



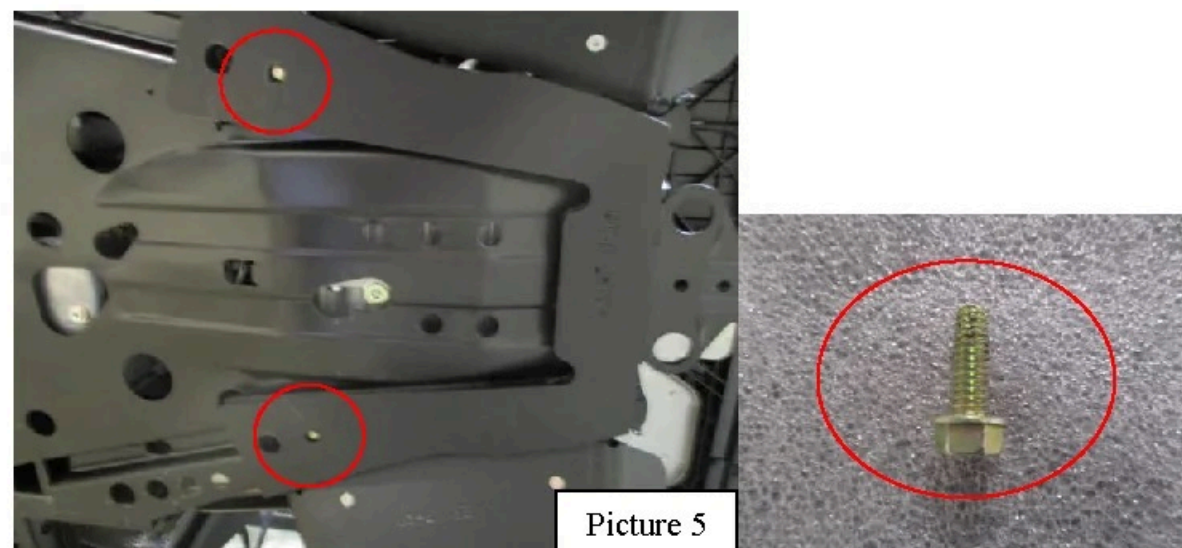
- B. Locate six supplied  $\frac{1}{4}$ -20 u-nuts from the supplied bolt pack. Insert these into the OEM holes between the front a-arms. See Picture 2.



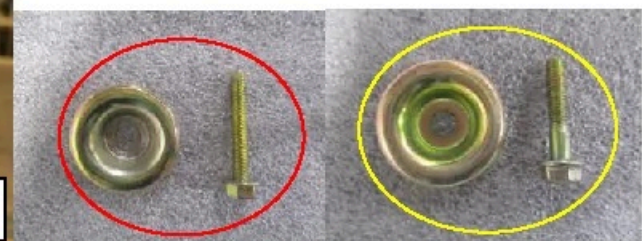
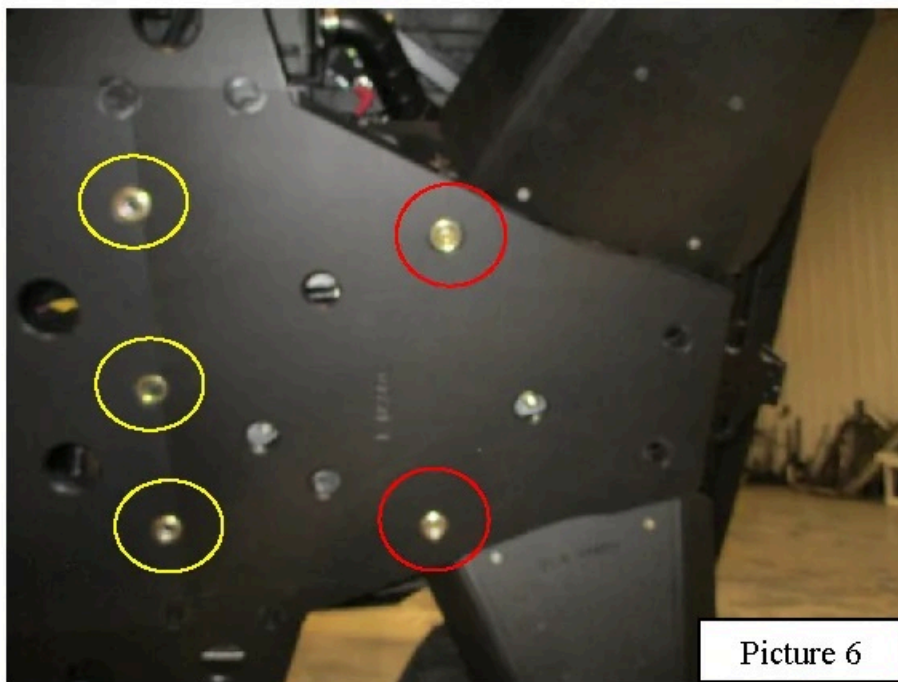
- C. Locate four supplied  $\frac{1}{4}$ -20 u-nuts from the bolt pack. To the rear of the vehicle, locate the four holes in the front of the rear a-arm mounts. See Picture 3. Install the remaining split nuts to these four holes.
- D. Locate Panel A of the Trail Armor skid set. Also, locate six supplied  $\frac{1}{4}$ -20 x  $\frac{3}{4}$ " thread cutting screws and six supplied bowl washers. Holding Panel A into position, insert one into each of the front six pre-drilled holes into the u-nuts previously installed. Loosely tighten. See Picture 4.



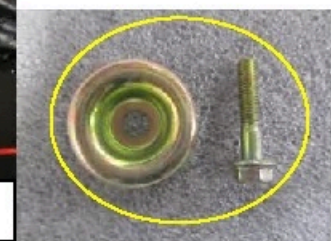
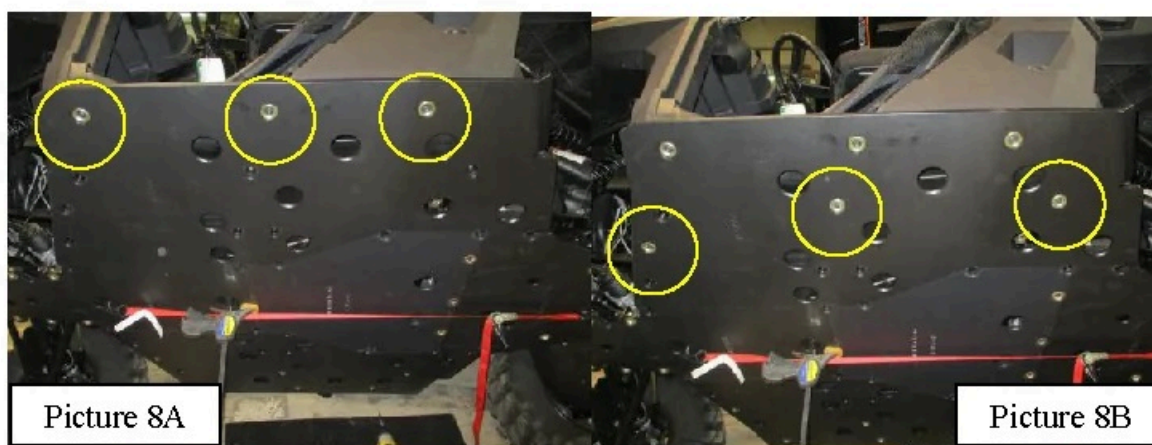
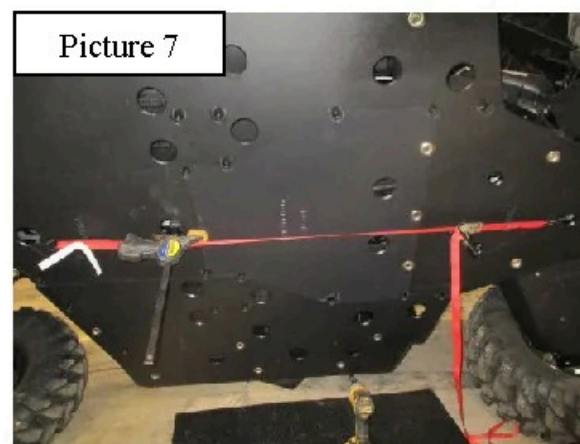
- E. Locate the u-shaped rear panel spacer. Insert two supplied  $\frac{1}{4}$  - 20 x  $\frac{3}{4}$ " thread cutting screws into the recessed(smaller) holes in the shim spacer. Mount the spacer to the rear two installed split nuts of the rear a-arm brace. See Picture 5. Tighten securely.



- F. Locate Panel C of the skid set. Also, locate two supplied  $\frac{1}{4}$ -20 x 1-1/2" thread cutting screws and two supplied bowl washers. Holding Panel C into position, insert these into the two center holes of the panel, through the front(larger) holes of the spacer into the u-nuts (**highlighted in RED**). Also, locate three supplied M6-1.0 X 30 mm. bolts and three supplied bowl washers. Insert these into the lap joint hole at the front of Panel C (**highlighted in YELLOW**). Loosely tighten. See Picture 6.

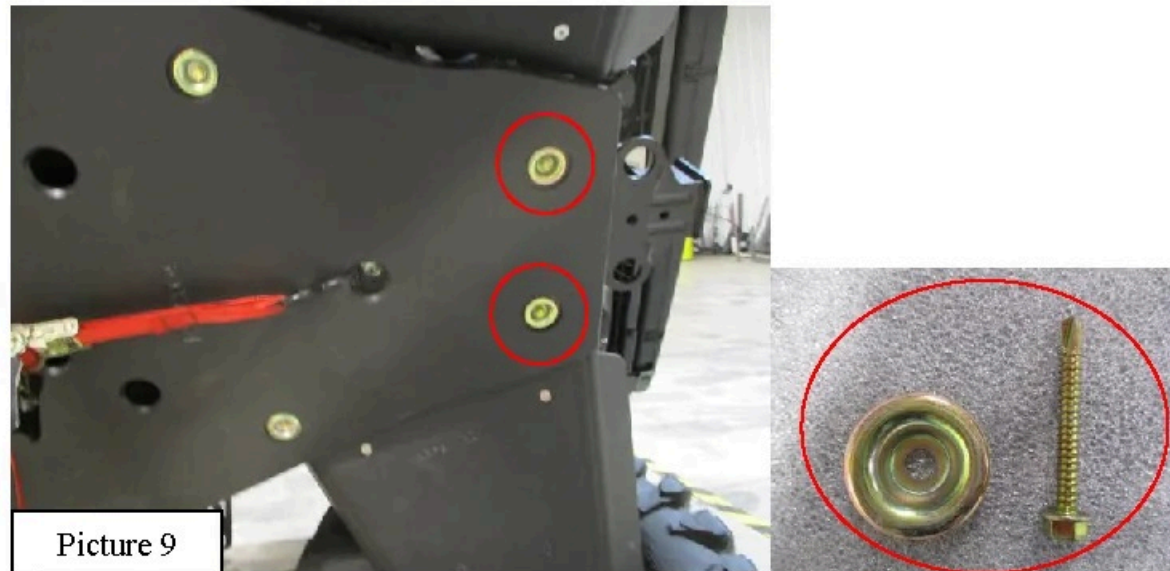


- G. Locate Panel B of the skid set. Slide Panel B underneath the lap joint of Panel A. Next, slide Panel B towards the rear of the vehicle and under the M6-1.0 x 30 mm. bolts previously installed. We used a small bar clamp to temporarily hold Panel A and Panel B's lap joint together. If possible, use a small ratchet strap to tighten lap joints and ensure all panels are aligned properly. See Picture 7.

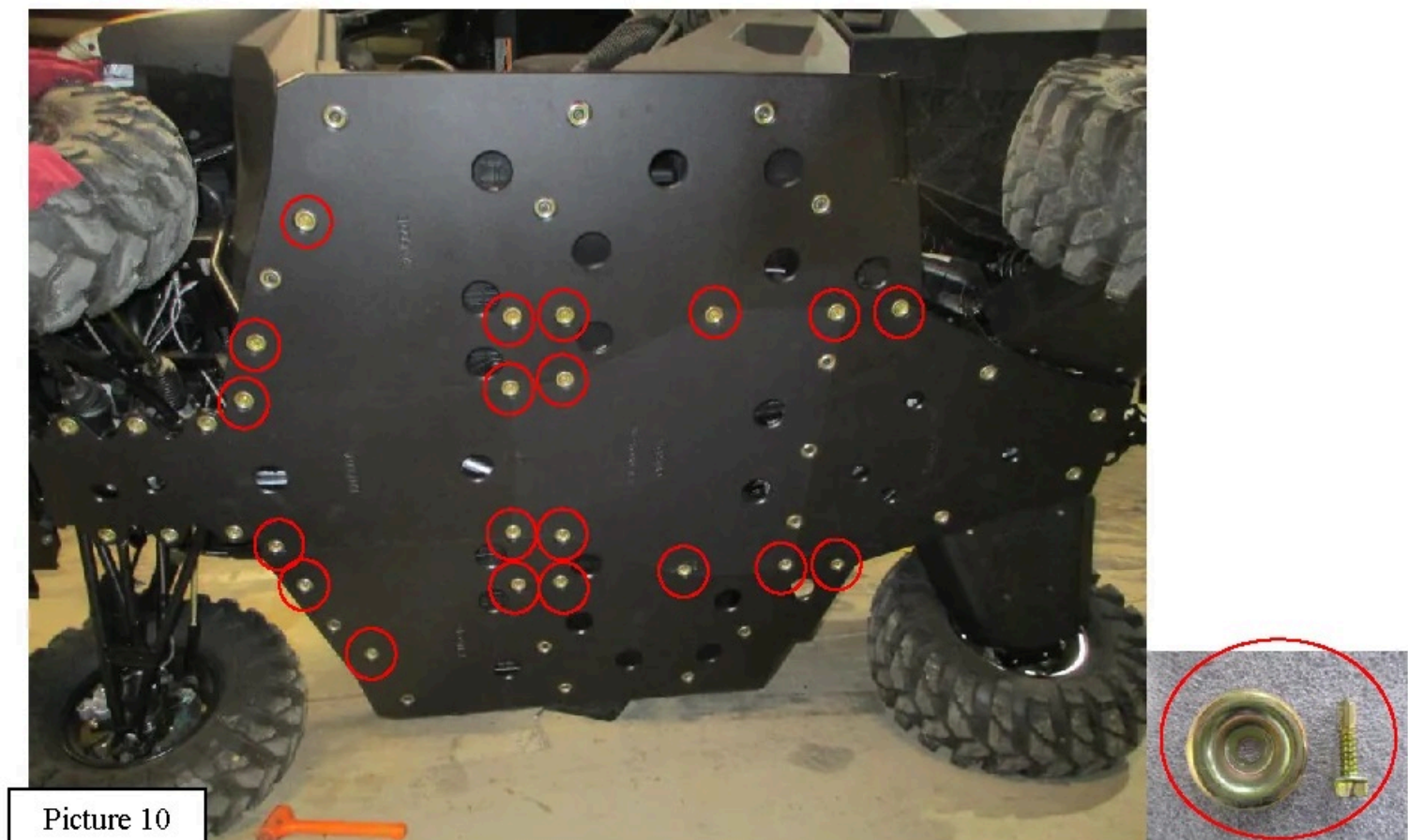


- H. Locate Panel D of the skid set. Also, locate three supplied M6-1.0 X 30 mm. bolts and three supplied bowl washers. Slide Panel D's lap joint behind the lap joints of Panels A, B, and C. Insert these into the three outer holes of Panel D. Loosely tighten. See Picture 8A.

- I. Locate three M6-1.0 x 30 mm. bolts and three supplied bowl washers. Insert these into the three visible threaded holes. Loosely tighten. See Picture 8B. Repeat Steps H and I for the opposite side (Panel E). Align all Panels and tighten all fasteners installed up to this point. DO NOT OVERTIGHTEN!



- J. Locate two supplied 14 x 2" TEK self-drilling screws and two bowl washers. Install these into the rear holes of Panel C. See Picture 9.
- K. Locate twenty supplied #14 x 1" TEK self-drilling screws and twenty bowl washers. Insert these into each of the remaining holes. See Picture 10 for final installation.



Enjoy! Any questions, contact Trail Armor at 662-233-5700.