



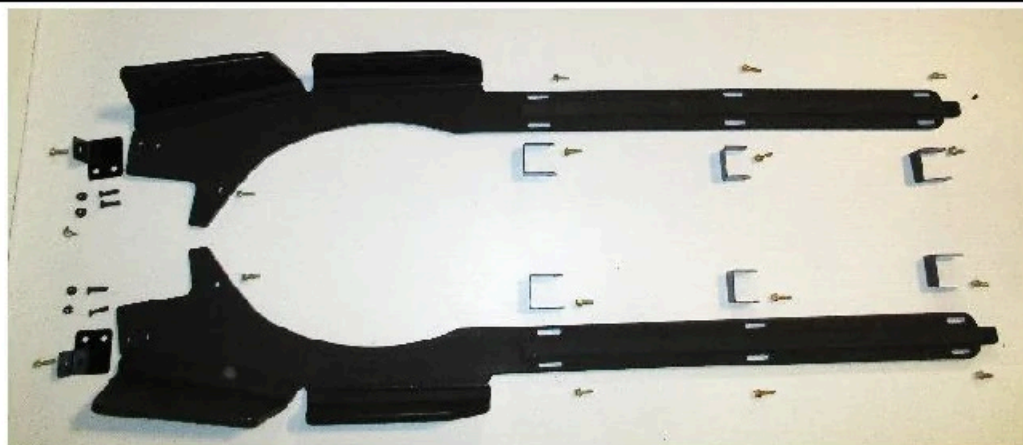
TRAILARMOR.COM  
839 HWY 2 CORINTH, MS 38834  
(662) 233-5700

# Installation Instructions

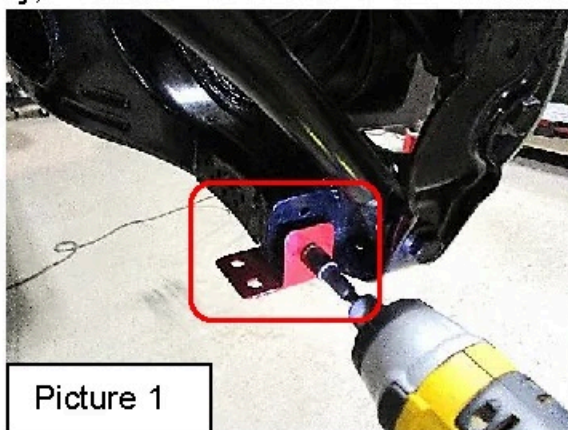
## Installation Instructions for Trail Armor Can Am Maverick X3 Max Turbo, X3 Max Turbo R, X3 MAX X DS Turbo R, X3 MAX RS Turbo R Impact Trailing Arm Guards (72") TA012ARMIMPTAG-CAMX3-72

### Warnings and Product Liability Disclaimer

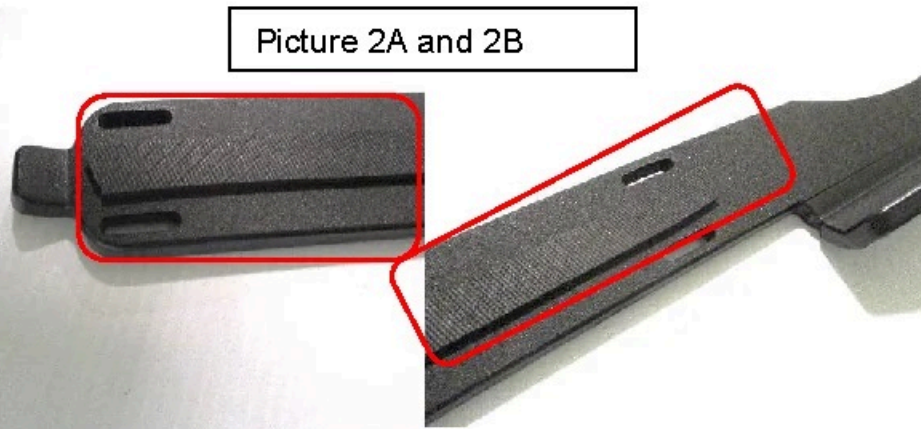
This product is intended to be used as a cosmetic accessory under normal equipment operation and should not be depended upon or used as a safety device. Manufacturer assumes no liability for personal injury or equipment damage as the result of use or installation of this accessory. User assumes all risk. User should carefully read all instructions prior to installation.



- A. Remove tires prior to beginning for easier install. Always secure vehicle with safety stands.
- B. Locate the two rear metal brackets and two supplied 1/4-20 x 3/4" thread cutting screws. Starting with the passenger side bracket, hold the bracket into position at the rear of the vehicle. Insert a 3/4" screw through the bracket into the lower hole at the rear of the trailing arm. Repeat on driver side. See Picture 1. Tighten fasteners securely, but DO NOT OVERTIGHTEN!

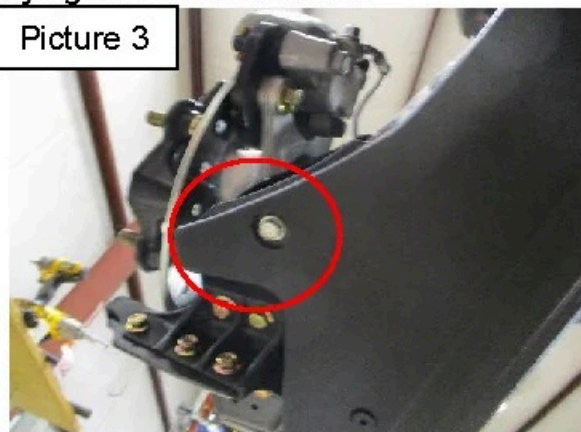


Picture 1



Picture 2A and 2B

- C. Locate the Trail Armor trailing arm guards and two 24" pieces of foam. Peel paper from the foam and stick to each of the guards on the opposite side of the engraving. See Picture 2A and 2B for placement.
- D. Holding passenger side guard into position, insert one 1/4-20 x 3/4" thread cutting screw through the recessed hole at the rear in front of the hub assembly. Loosely tighten. See Picture 3.
- E. Locate two supplied 1/4-20 x 1" socket cap screws and two 1/4-20 nylock nuts. Insert one 1" socket cap screw into each of the pre-drilled holes, through the bracket previously installed, and secure with the 1/4-20 nylock nuts. Loosely tighten. See Picture 4.



Picture 3



Picture 4





TRAILARMOR.COM  
839 HWY 2 CORINTH, MS 38834  
(662) 233-5700

# Installation Instructions

## Installation Instructions for Trail Armor Can Am Maverick X3 Max Turbo, X3 Max Turbo R, X3 MAX X DS Turbo R, X3 MAX RS Turbo R iMPact Trailing Arm Guards (72") TA012ARMIMPTAG-CAMX3-72

- F. Locate one of the larger "U" shaped brackets and two  $\frac{1}{4}$ "-20 x  $\frac{3}{4}$ " thread cutting screws. Insert the bracket through the rear slot of the trailing arm guard onto the side of the trailing arm. Insert one  $\frac{3}{4}$ " thread cutting screw through the bracket into the outside of the trailing arm and one into the inside. Loosely tighten. See Picture 5A and 5B.  
**\*\*NOTE-**The front and rear brackets are identical. The center brackets will be smaller. Repeat this procedure for the front bracket. Tighten all fasteners installed up to this point. **DO NOT OVERTIGHTEN!**

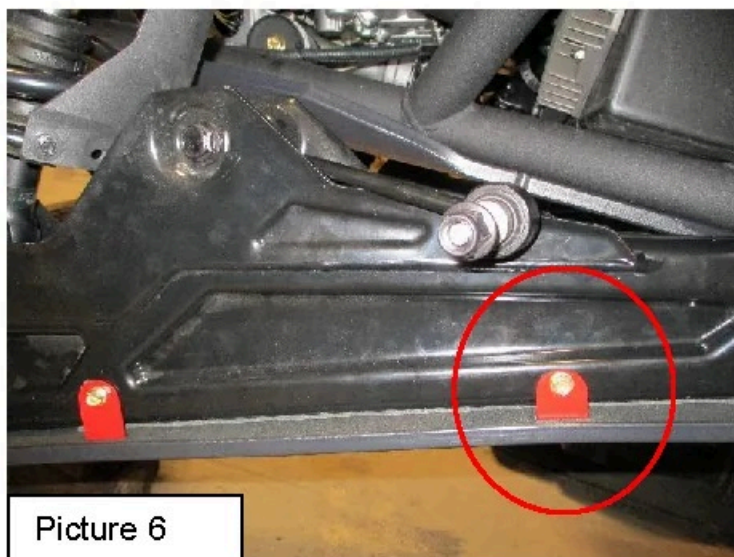


Picture 5A



Picture 5B

- G. Locate the small center bracket. Insert the bracket through the guard and onto the trailing arm. Push the bracket tight against the trailing arm. Using a  $\frac{3}{16}$ " drill bit, drill a hole in the center of the holes of the bracket on the inside and outside of the trailing arm. Insert one  $\frac{1}{4}$ "-20 x  $\frac{3}{4}$ " thread cutting screws into the previously drilled holes. See Picture 6.



Picture 6

- H. Repeat for driver side. Replace tires and check all lug nuts.