



TRAILARMOR.COM
839 HWY 2 CORINTH, MS 38834
(662) 233-5700

Installation Instructions

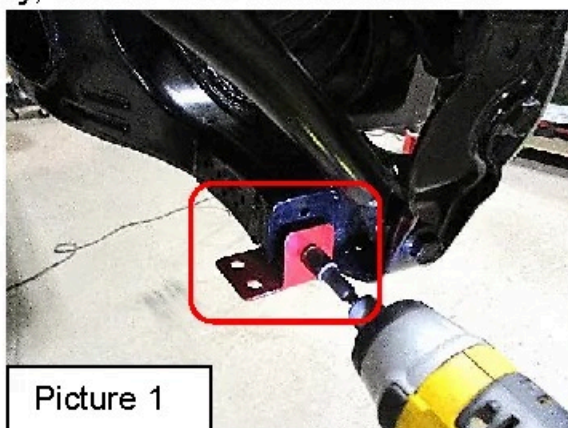
Installation Instructions for Trail Armor Can Am Maverick X3 iMPact Trailing Arm Guards (64") TA012IMPTAG-CAMX3-64

Warnings and Product Liability Disclaimer

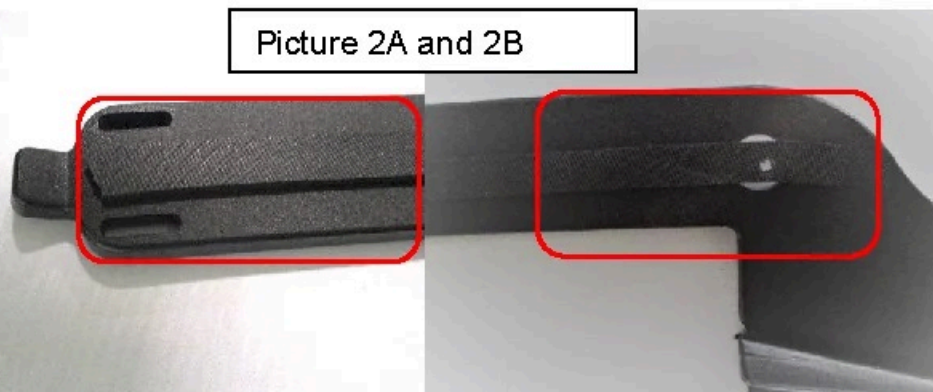
This product is intended to be used as a cosmetic accessory under normal equipment operation and should not be depended upon or used as a safety device. Manufacturer assumes no liability for personal injury or equipment damage as the result of use or installation of this accessory. User assumes all risk. User should carefully read all instructions prior to installation.



- A. Remove tires prior to beginning for easier install. Always secure vehicle with safety stands.
- B. Locate the two supplied rear metal brackets and two supplied 1/4-20 x 3/4" thread cutting screws. Starting with the passenger side bracket, hold the bracket into position at the rear of the vehicle. Insert a 3/4" screw through the bracket into the lower hole at the rear of the trailing arm. Repeat on driver side. See Picture 1. Tighten fasteners securely, but **DO NOT OVERTIGHTEN!**



Picture 1

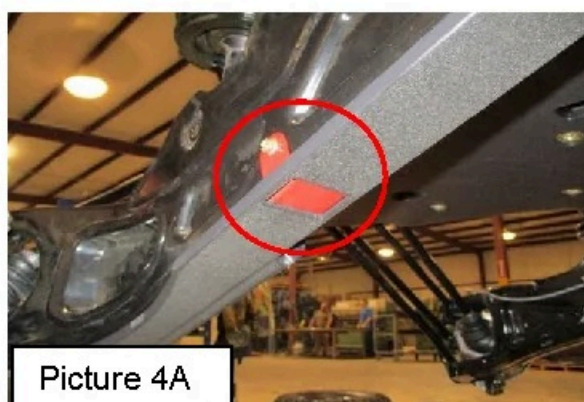


Picture 2A and 2B

- C. Locate the Trail Armor trailing arm guards and two supplied 28" pieces of foam. Peel paper from the foam and stick to each of the guards on the opposite side of the engraving. See Picture 2A and 2B for placement.
- D. Locate two supplied 1/4-20 x 1" socket cap screws and two 1/4-20 nylock nuts. While holding the passenger side guard into position, insert one 1" socket cap screw into each of the two pre-drilled holes, through the bracket previously installed, and secure with the 1/4-20 nylock nuts. Loosely tighten. See Picture 3.



Picture 3



Picture 4A



TRAILARMOR.COM
839 HWY 2 CORINTH, MS 38834
(662) 233-5700

Installation Instructions

Installation Instructions for Trail Armor Can Am Maverick X3 iMPact Trailing Arm Guards (64") TA012IMPTAG-CAMX3-64

- E. Locate one of the "U" shaped brackets and two 14 x 1" TEK self-drilling screws. Insert the bracket through the rear slot of the trailing arm guard onto the side of the trailing arm. It may be necessary to clamp the front part of the plastic guards with a large C-clamp, a small bar clamp, or floor jack to tighten guards up against the trailing arms until installation is complete. Insert one 1" self-drilling screw through the bracket into the outside and one into the inside of the trailing arm. Loosely tighten. See Picture 4A. Repeat this procedure for the front bracket. See Picture 4B. Tighten all fasteners installed up to this point. DO NOT OVERTIGHTEN!



Picture 4B



Picture 5

- F. Locate one supplied bowl washer and one 14 x 1" TEK self-drilling screw. Insert the bowl washer into the pre-drilled hole on the plastic guard and secure with the 1" self-drilling screw. See Picture 5.
- G. Repeat for driver side. Replace tires and check all lug nuts.