



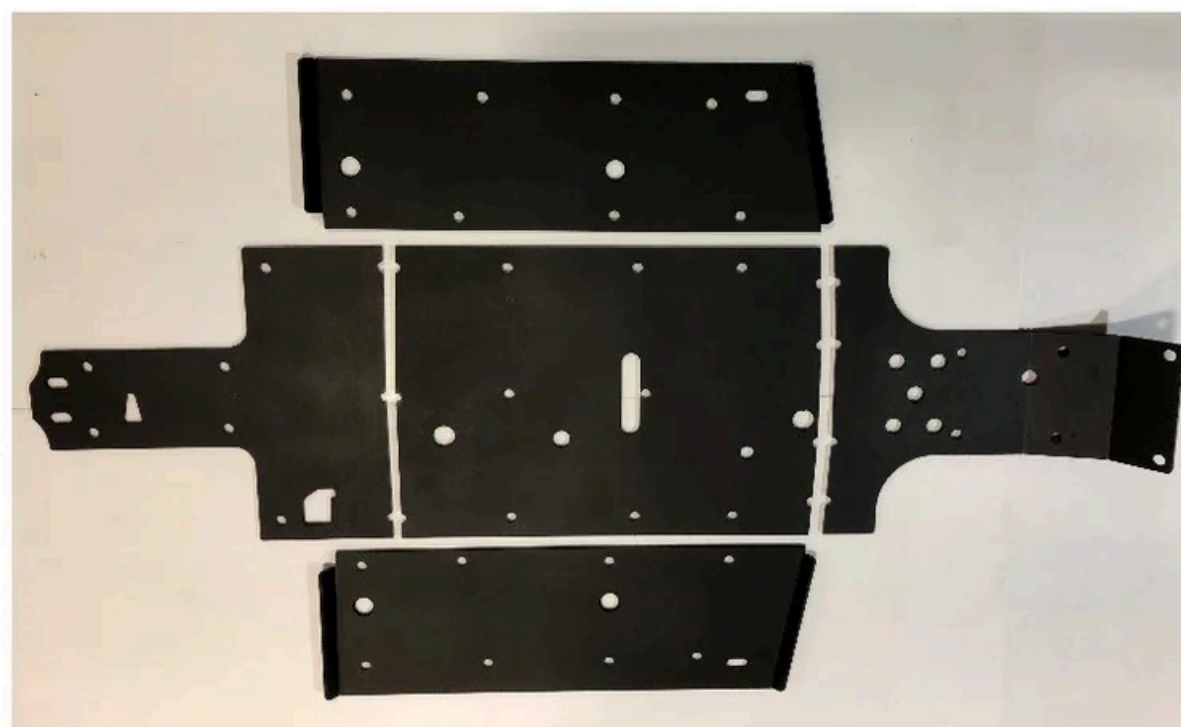
TRAILARMOR.COM
839 HWY 2 CORINTH, MS 38834
(662) 233-5700

Installation Instructions

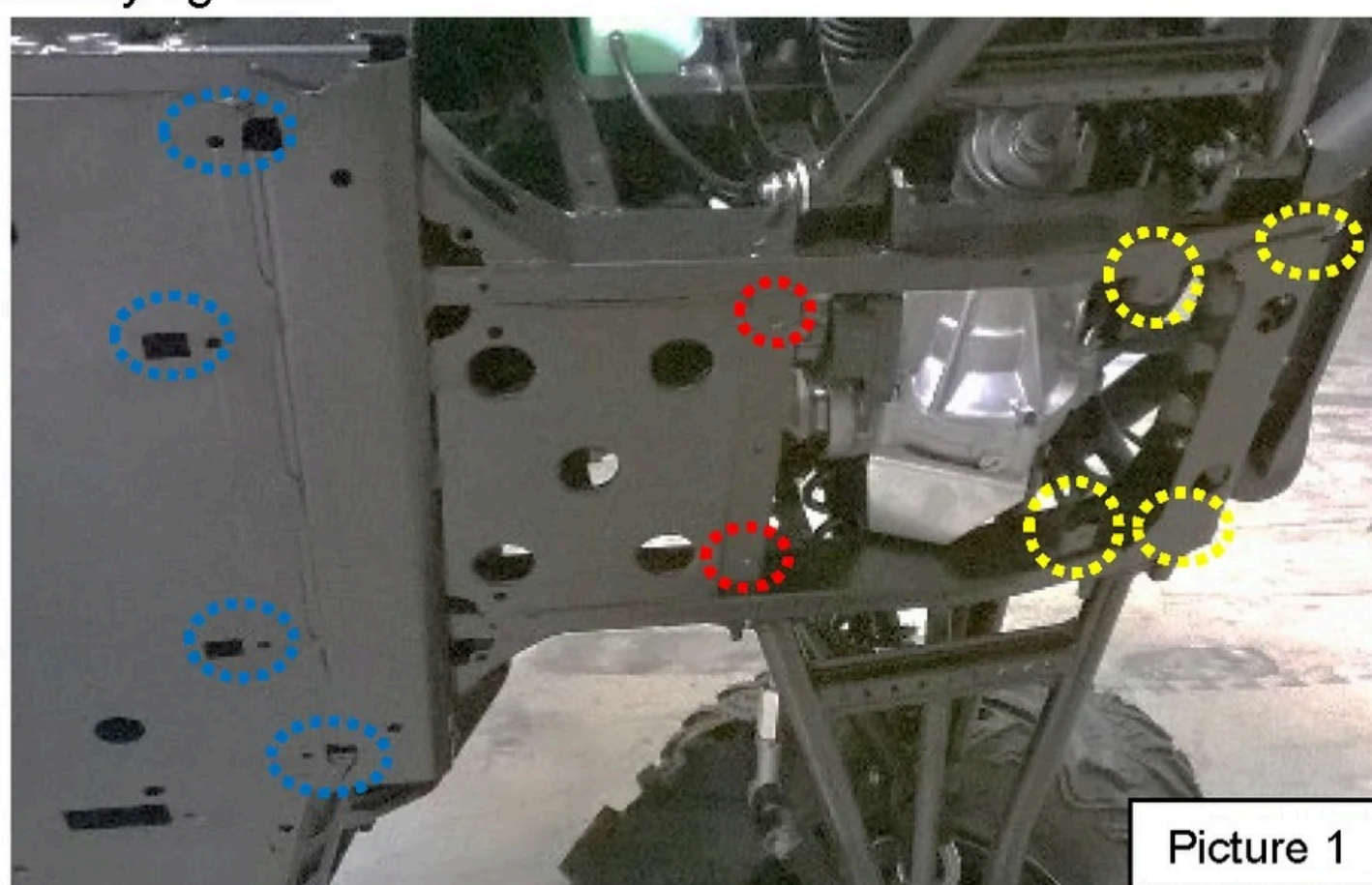
Installation Instructions for Trail Armor Yamaha Wolverine X2 Full Skids TA012FULLSKID-YW-X2

Warnings and Product Liability Disclaimer

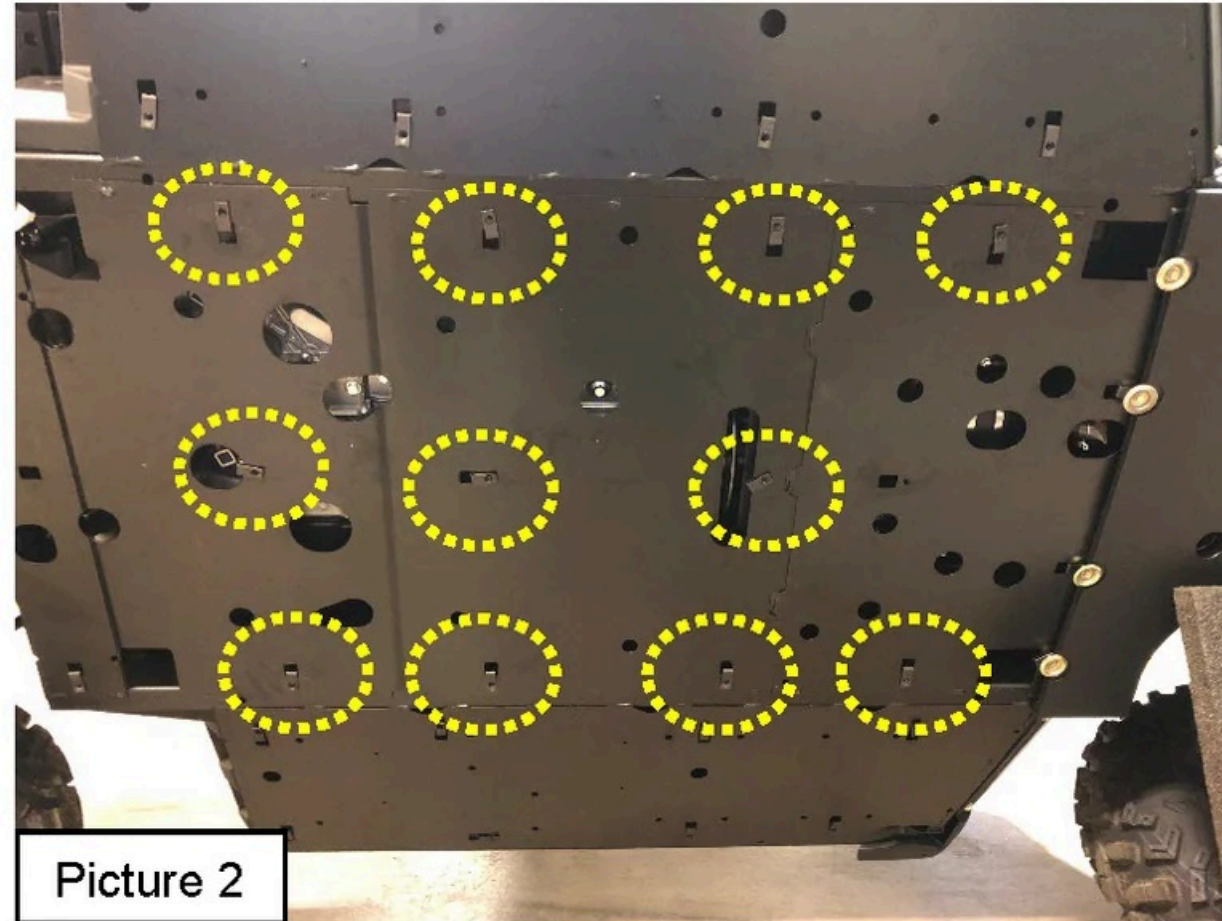
This product is intended to be used as a cosmetic accessory under normal equipment operation and should not be depended upon or used as a safety device. Manufacturer assumes no liability for personal injury or equipment damage as the result of use or installation of this accessory. User assumes all risk. User should carefully read all instructions prior to installation.



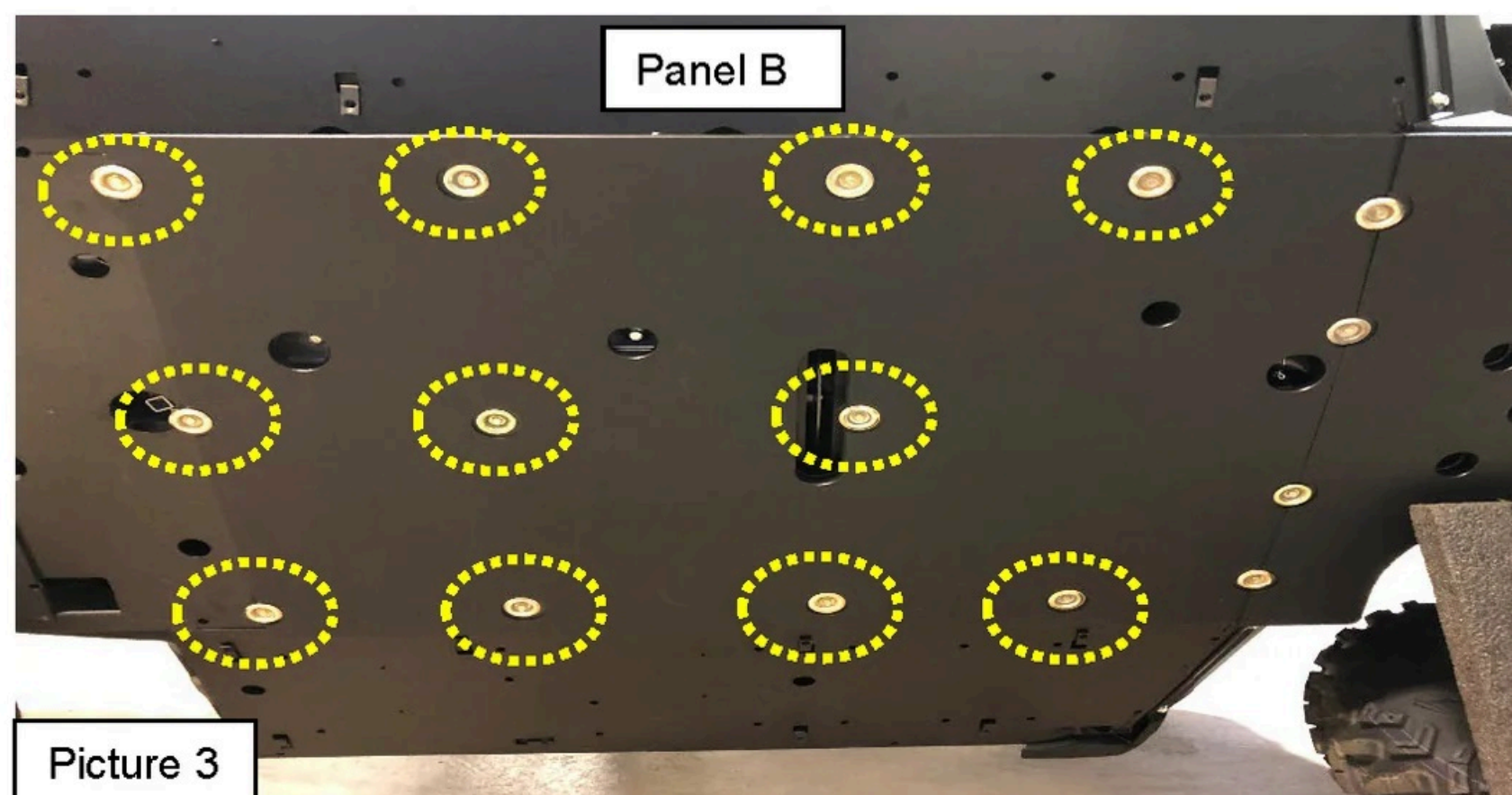
- A. To ease installation, gently tip vehicle onto its side and support securely with a safety stand. Remove the plastic OEM skid pan and fasteners. Discard. Leave metal floor pan in place.
- B. Locate Panel A. While holding Panel A into position at the front of the vehicle, align the two center mounting holes with the two holes in the cross brace located just behind the front differential (Red Circles). Install two supplied M6-1.0 x 30 mm. bolts (**100516**) and two supplied bowl washers (**100087**) into Panel A. Install four supplied M6-1.0 x 30mm. bolts (**100516**) and two supplied bowl washers (**100087**) into Panel A in bumper and mounting holes in front of differential (Yellow Circles). Loosely tighten. Install four supplied 1/4 - 20 extruded u-nuts (**100110**) into the four pre-drilled holes located at rear of A Panel (Blue Circles) See Picture 1. Install four supplied 1/4-20 x 3/4" thread-cutting screws (**100108**) and four supplied bowl washers (**100087**) into previously installed 1/4 - 20 extruded u-nuts (**100110**). Loosely tighten.

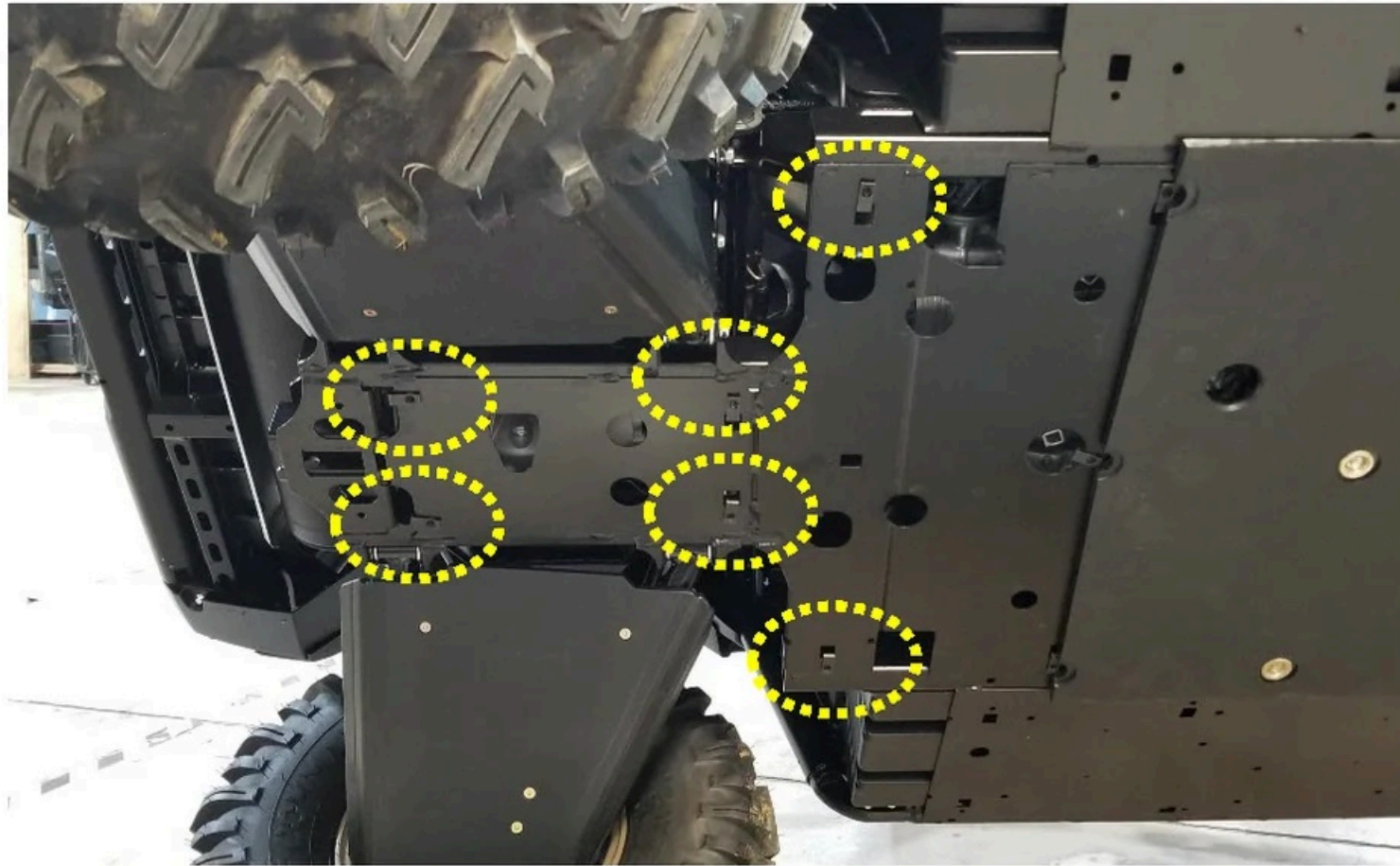


Picture 1

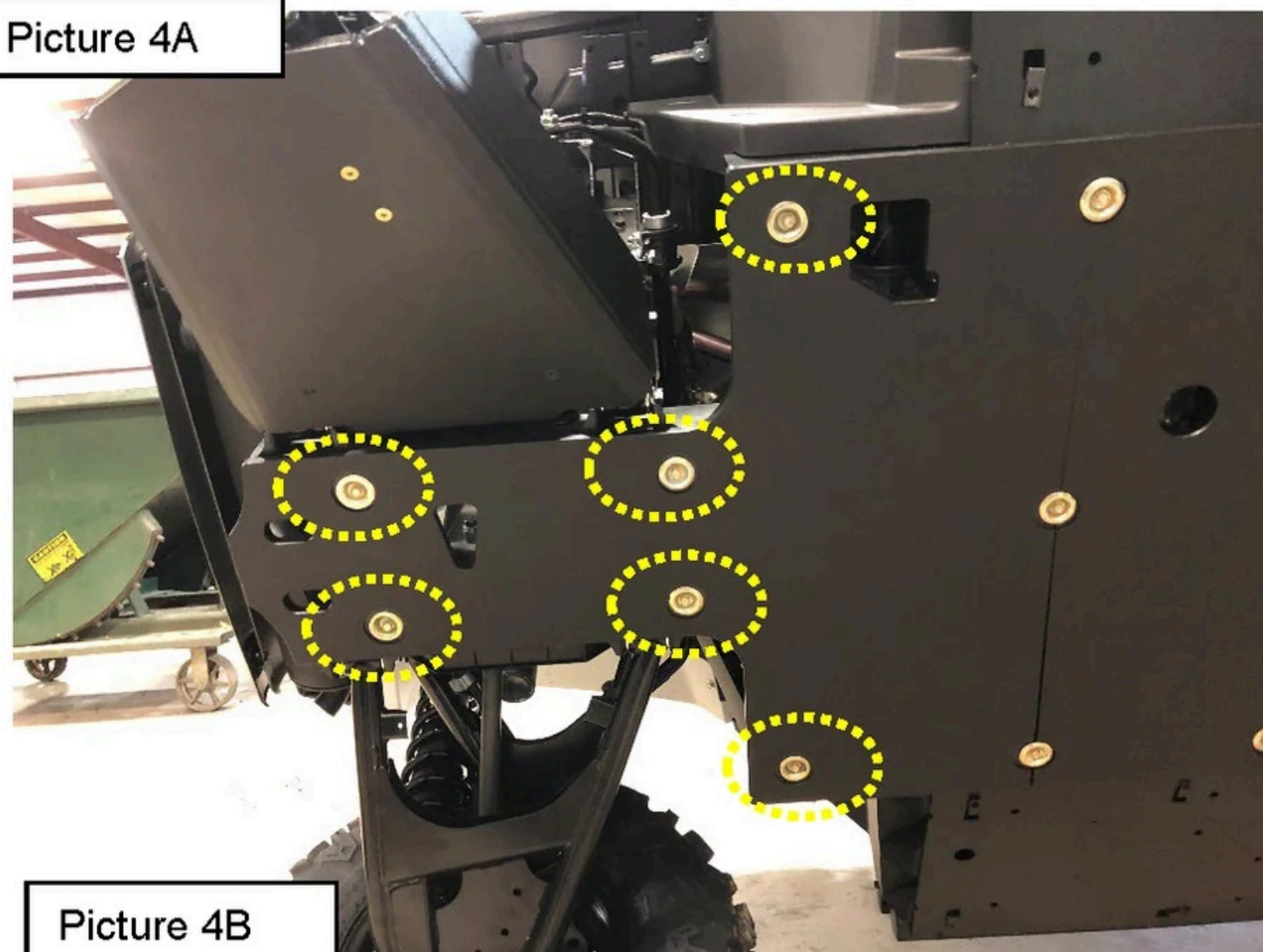


- C. Move to the center of the vehicle. Install eleven supplied $\frac{1}{4}$ - 20 extruded u-nuts (**100110**) into the eleven pre-drilled holes in the vehicle's metal floor pan. See Picture 2. Locate Panel B. Align the joint of Panel B with the joint of Panel A. Ensure there are no gaps. While holding Panel B into position at the center of the vehicle with the joint tightly aligned with Panel A, insert eleven $\frac{1}{4}$ -20 x $\frac{3}{4}$ " thread cutting screws (**100108**) and eleven supplied bowl washers (**100087**) into the previously installed $\frac{1}{4}$ - 20 extruded u-nuts (**100110**). See Picture 3. Loosely tighten.



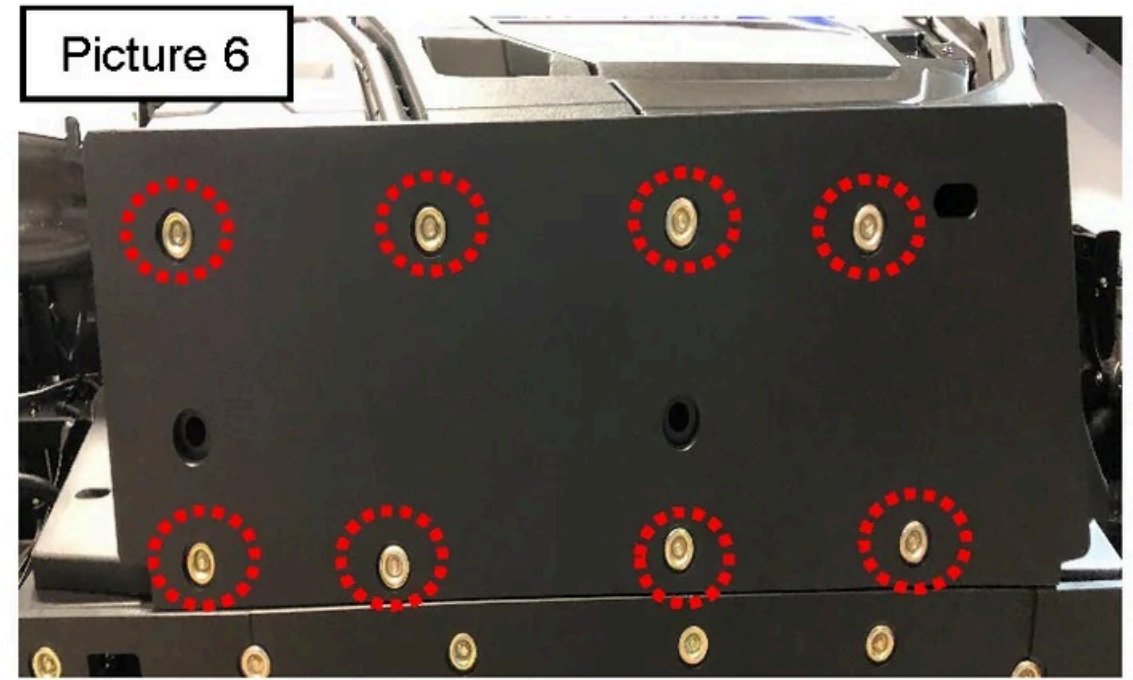
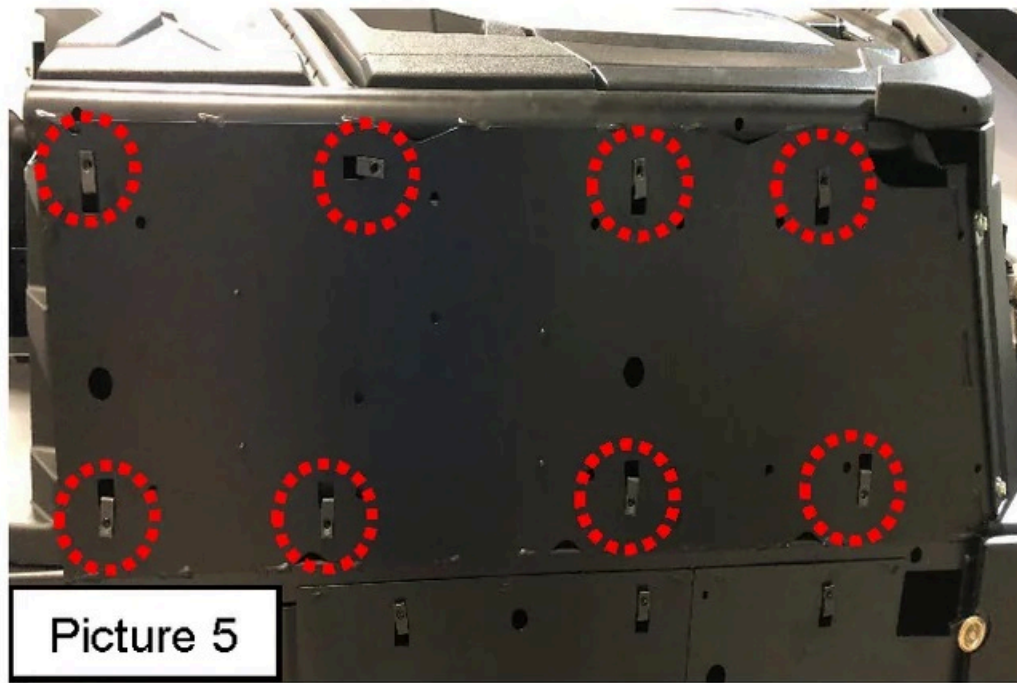


Picture 4A



Picture 4B

- D. Locate and install six $\frac{1}{4}$ - 20 extruded u-nuts (**100110**) into the six pre-drilled holes in the vehicle's metal floor pan. See Picture 4A. Locate Panel C of the skid set. Align the lap joint of Panel C with the lap joint of Panel B. Ensure there are no gaps. While holding Panel C into position at the rear of the vehicle and tightly aligned with Panel B, insert six supplied $\frac{1}{4}$ -20 x $\frac{3}{4}$ " thread-cutting screws (**100108**) and six supplied bowl washers (**100087**) into the previously installed $\frac{1}{4}$ - 20 extruded u-nuts (**100110**). See Picture 4B. Loosely tighten. Make sure all lap joints between Panels A, B and C are tightly aligned and securely tighten all fasteners. **Note: Do not overtighten hardware – you can strip the threads out of the mounting holes.**



- E. Install eight ¼ - 20 extruded u-nuts **(100110)** over the eight pre-drilled holes in the vehicle's metal floor pan. See Picture 5. Locate Panel D. Holding Panel D into position, insert eight ¼ - 20 x ¾" thread-cutting screws **(100108)** and eight supplied bowl washers (100087) into the previously installed ¼ - 20 extruded u-nuts **(100110)** See Picture 6. Repeat this Step for Panel E. Securely tighten all fasteners in panels D and E. See Picture 7 for final install.

