



Installation Instructions for iMPact A-Arm Boot Guards for Polaris Ranger XP 900 and Ranger XP 900 Crew UNIVERSAL

Warnings and Product Liability Disclaimer

This product is intended to be used as a cosmetic accessory under normal equipment operation and should not be depended upon or used as a safety device. Manufacturer assumes no liability for personal injury or equipment damage as the result of use or installation of this accessory. User assumes all risk. User should carefully read all instructions prior to installation.

- A. Remove tire prior to beginning for easier install. Always secure vehicle with safety stands. Leave plastic factory CV shield in place if applicable.

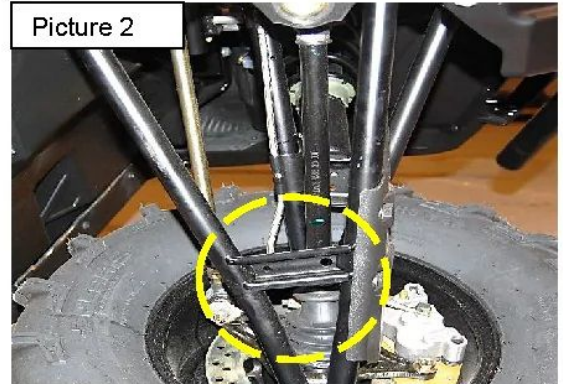
NOTE: Due to a year model break in Polaris's part #s, you will find either a one (round tube, see Picture 1) or two hole configuration (flat extruded brace, see Picture 2) on the front a-arms. Follow instructions per pictures accordingly.

For Front Guards

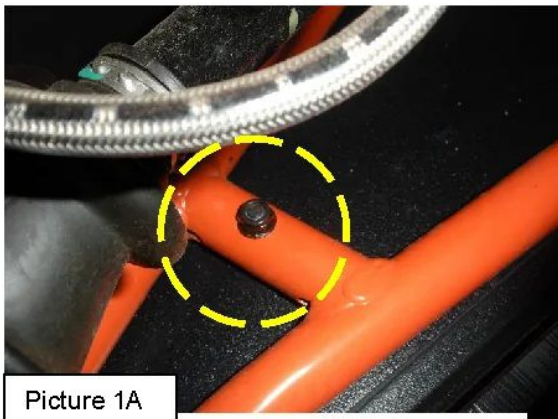
Picture 1



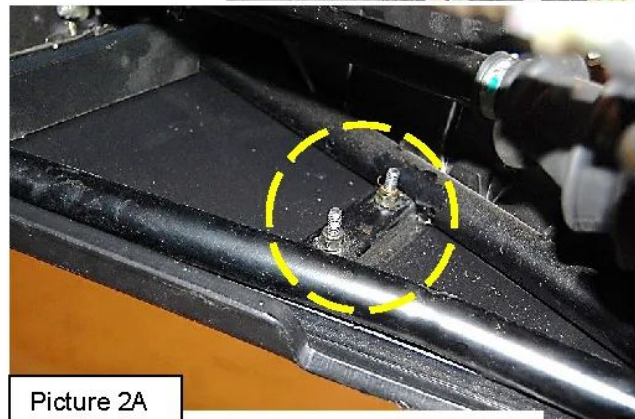
Picture 2



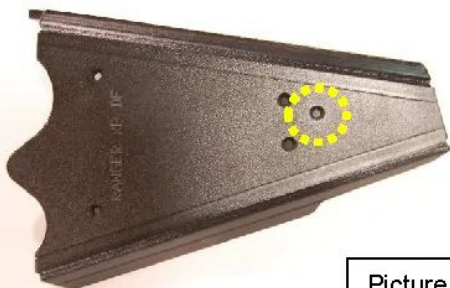
Picture 1A



Picture 2A



Picture 1B



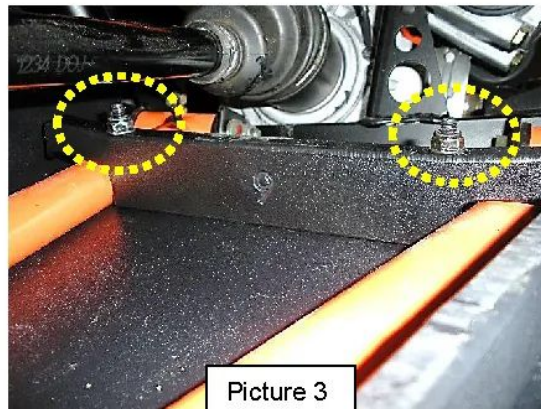
Picture 2B



- A. Locate Trail Armor's driver's side front a-arm guard. Locate the factory drilled holes in the outer a-arm cross brace indicated in Picture 1 or 2 (see note in red above). Position guard so that the guard's pre-drilled holes line up with the factory drilled hole in the a-arm cross brace. From the bottom of the guard, insert $\frac{1}{4}$ -20 x $1\frac{3}{4}$ " FHSC bolts through the guard holes then through the factory drilled hole in the a-arm cross brace. Secure loosely using supplied nylock nuts on the bolt end. Insert two $\frac{1}{4}$ -20 x $2\frac{1}{2}$ " FHSC bolts from the underside of the guard, through the guard. Locate the supplied plastic mounting strap 9. With the bolts held into position, place the plastic mounting strap over the bolts from the top side. Tap the plastic mounting strap down onto the inserted bolts until you can start the nylock nut on the bolt end and finger tighten. ***It is very important to start both bolts through the mounting strap together before tightening either because the strap will have pressure against the A-Arm.***

Do not in any way modify these plastic mounting straps. Do not trim or score any edges, any modification in any form will result in part failure and breakage!!!

- B. **Alternate tightening** the nylock nuts on the plastic mounting strap until the strap is secure. The plastic mounting strap will pull into place with the tabs slightly bent with pressure on the tabs. Now tighten the outer fasteners securely. See Picture #3. Repeat procedure for passenger side.



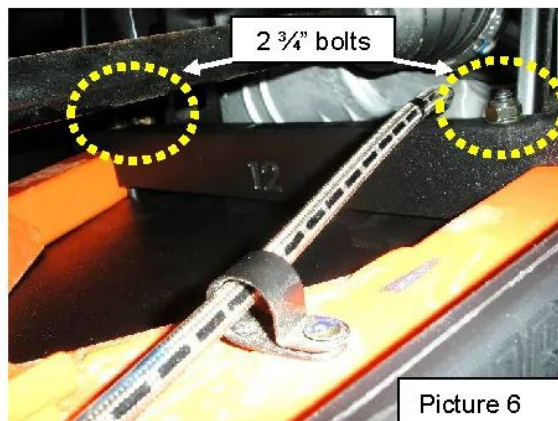
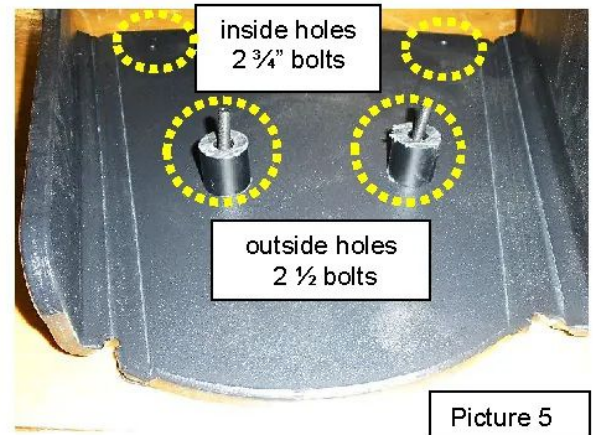
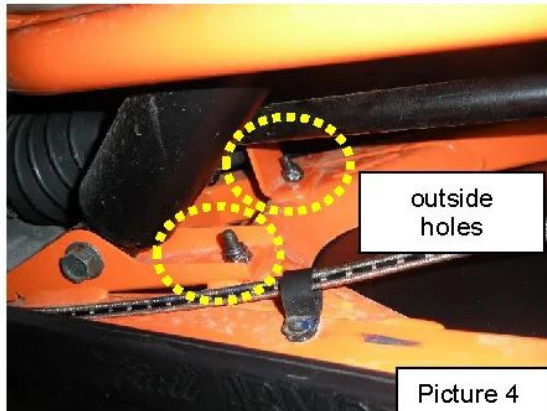
Picture 3

For Rear Guards

- C. Locate driver's side rear a-arm guard, the two 1" tube spacers and two $\frac{1}{4}$ -20 x $2\frac{1}{2}$ " FHSC bolts. Locate the two factory drilled holes located behind the lower shock mount as indicated in Picture 4. Place $\frac{1}{4}$ -20 x $2\frac{1}{2}$ " FHSC bolts through the two outside holes in the guard. Position tube spacers over the bolts and insert bolt with tube spacers through the two factory drilled holes in the cross brace indicated in Picture 5. Secure loosely using supplied $\frac{1}{4}$ -20 nylock nuts. Locate the supplied plastic mounting strap 12. Insert two $\frac{1}{4}$ -20 x $2\frac{3}{4}$ " FHSC bolts from the underside of the guard, through the guard. With the bolts held into position, place the plastic mounting strap over the bolts from the top side. Tap the plastic mounting strap down onto the inserted bolts until you can start the nylock nuts on the bolt ends and finger tighten. ***It is very important to start both bolts through the mounting strap together before tightening either because the strap will have pressure against the A-Arm.*** See Picture 6.

Do not in any way modify these plastic mounting straps. Do not trim or score any edges, any modification in any form will result in part failure and breakage!!!

- D. **Alternate tightening** the nylock nuts on the plastic mounting strap until the strap is secure. The plastic mounting strap will pull into place with the tabs slightly bent with pressure on the tabs. Tighten the outer fasteners securely. Repeat procedure for passenger side.



Enjoy! Any questions, contact Trail Armor at 662-462-4222