

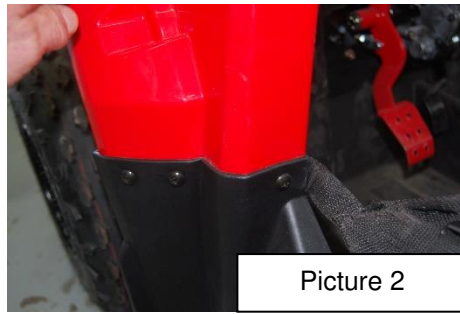
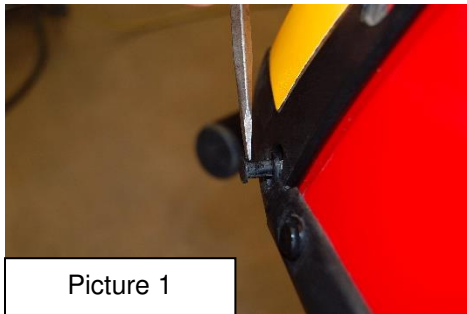


TRAIL ARMOR RZR170 DEBRIS AND MUDSHIELDS TA001BLK-RZR170

Warnings and Product Liability Disclaimer

This product is intended to be used as a cosmetic accessory under normal equipment operation and should not be depended upon or used as a safety device. Manufacturer assumes no liability for personal injury or equipment damage as the result of use or installation of this accessory. User assumes all risk. User should carefully read all instructions prior to installation. All Trail Armor products are designed, engineered, and fit to new vehicles and their specifications. Damage, modifications, and extreme wear may cause and require modifications to the product and/or your vehicle to insure proper fitment.

- A) Remove plastic push pins that connect the headlight/grill panel at each side of the hood. See Picture 1.



- B) Remove the 4 plastic push pins and screws that connect lower hood/fender where it connects to the rocker panel on each side. Remove factory safety nets. See Picture 2 above. Unplug all gauges and switches of the dash panel and remove 2 push pins holding lower dash. Remove the screws holding the choke knob. **(Note: EFI models will not have a choke knob.)** Remove the lower roll cage bolts. See Picture 3. Remove the pushpins securing the black upper floors/dash panel to the inside of the fender/hood plastic and three of the pins in the floor pan from each side.

- C) Slide plastic hood/fenders up the roll cage enough to access the under dash area and secure with tie down straps. See Picture 4. Turn the inner panel back out of the way to ease access to the lower frame bracket. See Picture 5.



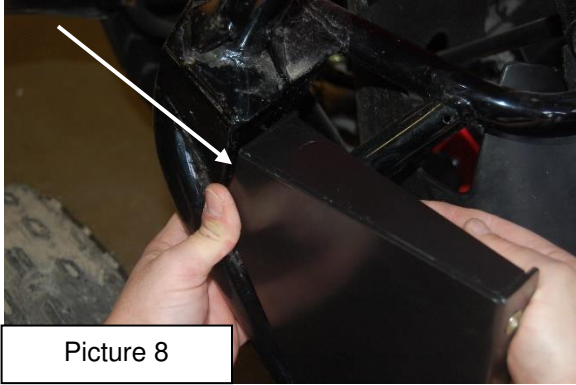
- D) Using 3/8 drill bit, drill out the third hole from the front in the lower frame bracket. See Picture 6.





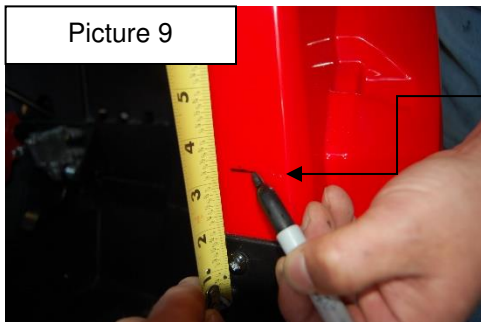
Installation Instructions

- E) Install the inner mounting bracket **behind** the lower frame tab and loosely secure it with supplied 3/8 x 1 bolts, washers and nylock nuts (from pack 1) in preparation for marking the upper mounting holes. See Picture 7.
- F) Align the mounting brackets upper edge with the square edge of the frame and mark the holes to be drilled from the inside. Remove the inner mounting bracket just installed in step F so you can drill your final mounting holes. See Picture 8.



Picture 8

- G) Pre-drill the marked holes using a 3/16 drill bit. Redrill holes using a 5/16 bit. Install the inner mounting bracket to the drilled holes using the supplied 5/16 bolts, washers and nylock nuts. Reinstall the lower 3/8 bolts, washers and nylocks. Tighten all securely.
- H) Repeat marking and drilling process for other side. Install second bracket.
- I) Reinstall plastic push pins that connect the headlight/grill panel at each side of the hood.
- J) Reinstall the 4 plastic push pins and screws that connect lower hood/fender where it connects to the rocker panel on each side. Replug all gauges and switches of the dash panel and reinstall the 2 push pins holding lower dash. **Leave the upper floors/dash panel loose for now.**
- K) Locate the screw that secures the rocker panel to the fender/hood. Measure from the center of this screw up 2 3/8" and make a mark parallel to the top edge of the rocker panel. See Picture 9.



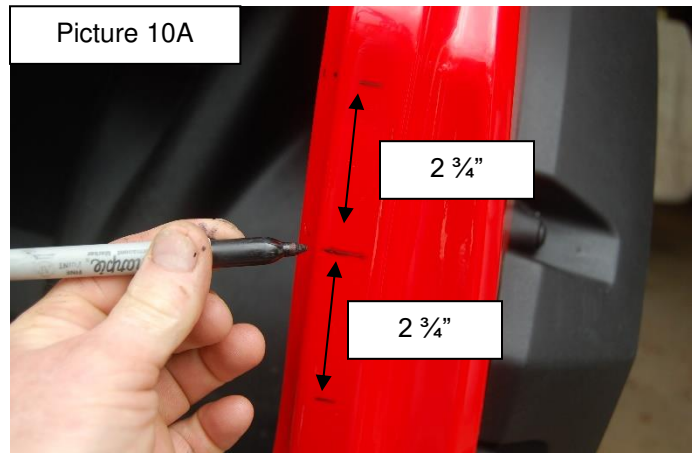
Picture 9

We hold tape at 1" at edge to measure 2 3/8 up (will be at 3 3/8)

- L) From the outer square of the fender measure over 1" and make a mark to prepare to drill holes. See picture 10.



Picture 10



Picture 10A

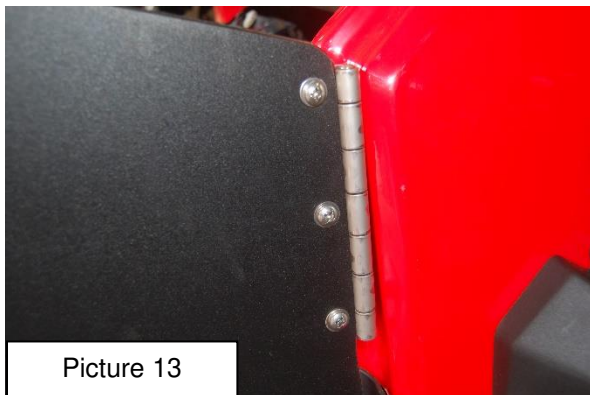


Installation Instructions

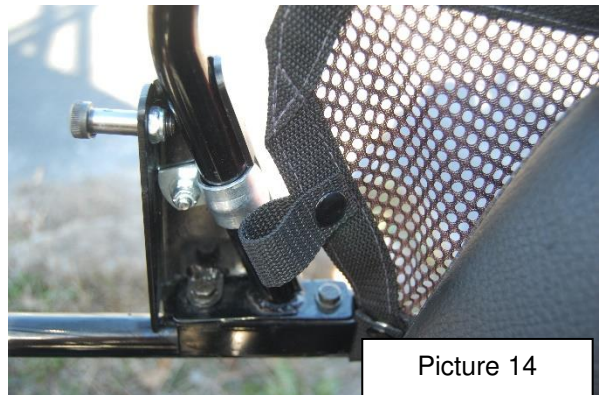


Picture 11

- M) Using a 1/8" drill bit, drill an exploratory hole to locate the bottom holes in the concealed hinge mounting brackets. These should be approximately 1" off the outer edge of the fender plastic. These holes will be covered by the hinges when installed. See Picture 10.
- N) With the inner mounting bracket's lower hole center located in step M, mark the upper two holes 2 3/4" apart and over from the edge as in step L See Picture 10A. Repeat step M on each of the upper two holes.
- O) Once the hole centers have been located in the hinge mounting brackets, you will need to redrill the holes in the plastic using a 5/16" drill bit. **IMPORTANT** - *Drill through the plastic only so you don't damage the threads in the hinge mounting brackets.*
- P) Open pack 2. Using supplied 1/4 - 20 x 1 torx from pack 2, install the hinges with the flat side in so it fits flat against the body panel. Start all fasteners loosely to be sure that the fasteners all aligned. Be careful not to cross-thread. Picture 11. Once all are aligned, tighten securely.
- Q) Using fasteners from pack 2, install the debris shield panels to the hinges using the supplied 1/4 -20 x 1" torx and secure with the 1/4 - 20 nylock nuts. Tighten securely. Trail Armor logo goes on outside of vehicle. See Picture 13.
- R) Using bolt pack 3, install the latch striker plates to the upper side guard/seat rail. Remove the front screw from the shoulder bar. Install striker plate using removed fasteners and supplied strap clamps. The OEM side nets can remain in place but the lower front snap will have to be left unsnapped. See Picture 14. Install striker bolt to the front of the plate and secure with 5/16 - 18 nylock nut.
- S) Using a 1/4" drill bit, drill holes through strike plate mounting brackets and through handles of vehicle. Secure with supplied 1/4 - 20 x 1 1/2" button head screws and nylock nuts. See Pictures 15 and 16.



Picture 13



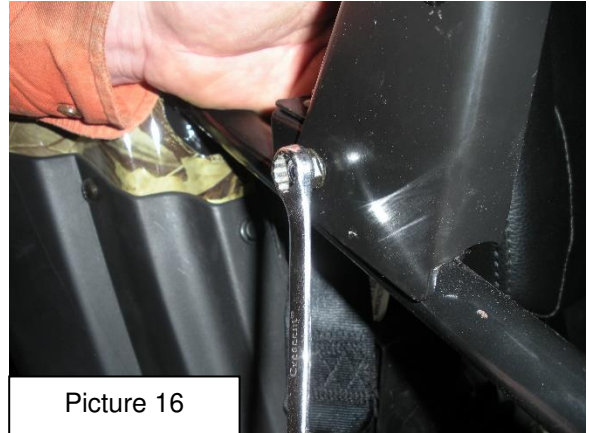
Picture 14



Installation Instructions



Picture 15



Picture 16

- T) Locate the passenger door handle latch and handle mount. To start the latch installation, carefully remove plastic handle cover. Insert two 5/16 -18 x 1 ¼ " flathead screws through the front of latch. Place door handle mount over screw ends, and secure using the two supplied 5/16 -18 thin nylock nuts. Tighten securely. As shown in Picture 17.
- U) In preparation for mounting the latches to the debris shield panel, clip the rotary latch over the striker bolt. Center the latch's rotary clip in the middle of the striker, close the debris shield against the latch handle assembly and mark the mounting holes on the debris shield. See Picture 18. Using ¼" drill bit, drill the rear holes and attach the latch using supplied ¼ - 20 x 1" torx (per handle) and nylock nuts from pack 4. Check fitment while closed and align the front of the latch handle to the desired angle and drill the front hole and secure with screw. Install latch rotary cover by simply bumping it on – it clips over the screw head.



Picture 17



Picture 18

A 1/4" – 5/16" parallel gap should be maintained between the latch and the strike plate.