



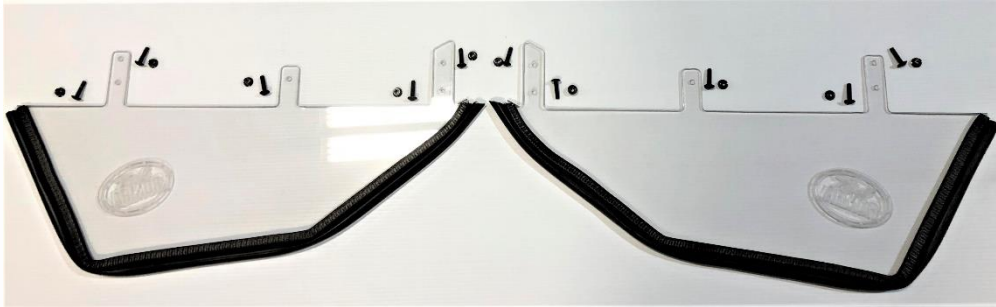
TRAILARMOR.COM
839 HWY 2 CORINTH, MS 38834
(662) 233-5700

Installation Instructions

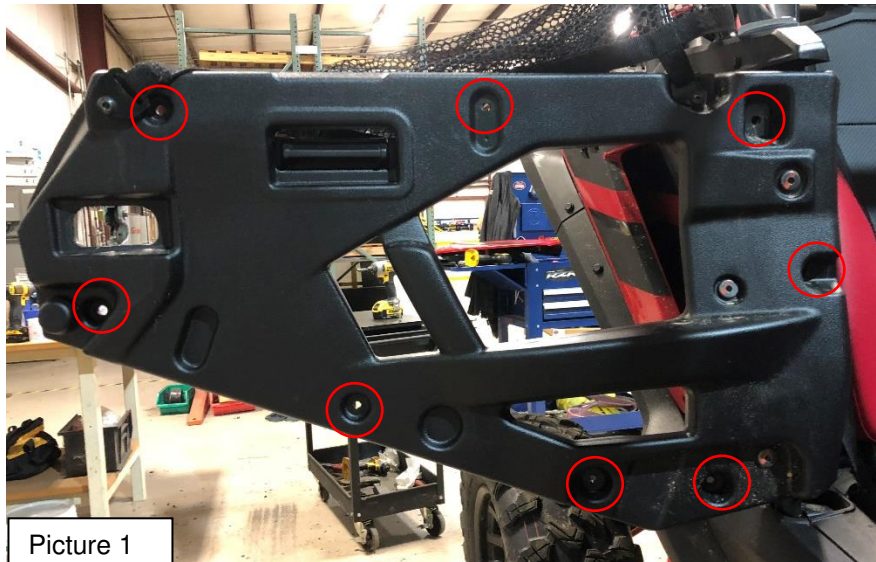
Trail Armor Honda Talon 1000 Door Extensions TA001-DOORS-HT1000

Warnings and Product Liability Disclaimer

This product is intended to be used as a cosmetic accessory under normal equipment operation and should not be depended upon or used as a safety device. Manufacturer assumes no liability for personal injury or equipment damage as the result of use or installation of this accessory. User assumes all risk. User should carefully read all instructions prior to installation. All Trail Armor products are designed, engineered, and fit to new vehicles and their specifications. Damage, modifications, and extreme wear may cause and require modifications to the product and/or your vehicle to insure proper fitment.



Instructions



- A. Remove door cover from the door frame by removing eight OEM screws as shown in Picture 1. Retain as they will be reused.

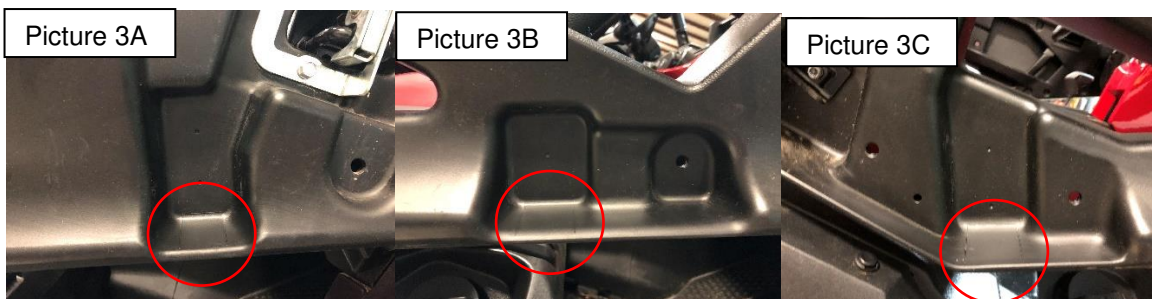


TRAILARMOR.COM
839 HWY 2 CORINTH, MS 38834
(662) 233-5700

Installation Instructions



- B. Locate the five drill points on the outside of the door panel. Using a 1/4" drill bit, drill the five holes completely through the door panel. Make sure the door is open to keep from drilling into the seat! See Picture 2.

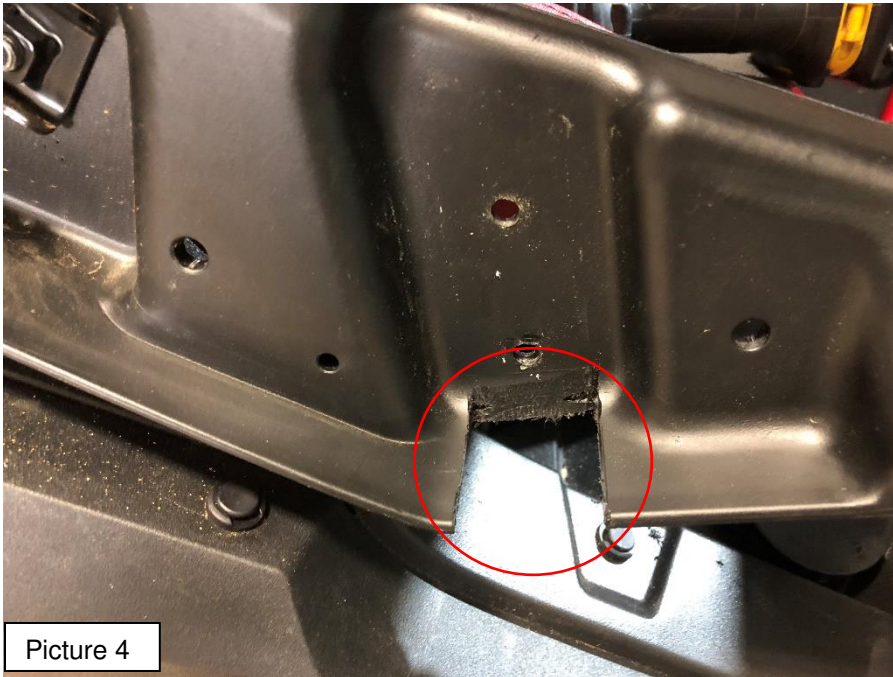


- C. Note just below each set of holes, there are scribe lines. See Pictures 3A, 3B, and 3C.
- D. Using a rotary tool, cut the scribe lines back to the flat surface of the door panel. A razor knife can be used to carefully score the plastic at the flat surface. Once scored, you can use a pair of pliers to snap the plastic away from the door panel. See Picture 4. A deburring tool or file can be used to smooth the edges.

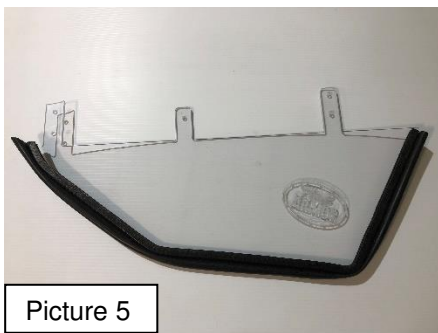


TRAILARMOR.COM
839 HWY 2 CORINTH, MS 38834
(662) 233-5700

Installation Instructions



- E. Locate the Trail Armor door extension. Also, locate the supplied bulb seal. Roll the bulb seal on starting at the front of the panel. See Picture 5.

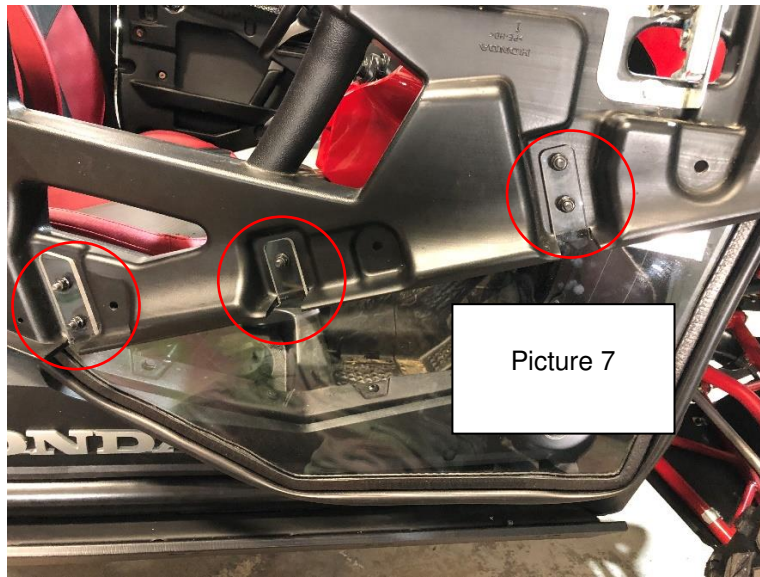


- F. Locate five supplied 1/4-20 x 1" Torx Truss screws and five 1/4-20 nylock nuts. Slide the tabs of the extension up into the slots. From the inside of the door, insert one 1" screw through the door panel, through the extension, and secure with the 1/4-20 nylock nuts. See Pictures 6 and 7.



TRAILARMOR.COM
839 HWY 2 CORINTH, MS 38834
(662) 233-5700

Installation Instructions



- G. Replace the door cover and tighten securely but **DO NOT OVERTIGHTEN!** See completed install picture below.

