



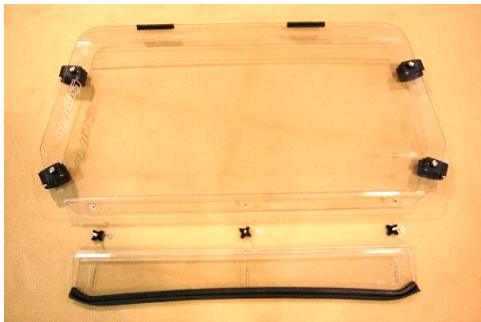
TRAILARMOR.COM  
 839 HWY 2 CORINTH, MS 38834  
 (662) 233-5700

# Installation Instructions

## Trail Armor Arctic Cat Wildcat Trail, Wildcat Trail XT, Wildcat Trail Limited EPS Wildcat Sport Limited EPS, Wildcat Sport XT, Wildcat Sport CoolFlo Windshield with Fast Clamps DoT Approved Rated AS4 2014 - 2015 TA010SHLDFC-ACWTRL

### Warnings and Product Liability Disclaimer

This product is intended to be used as a cosmetic accessory under normal equipment operation and should not be depended upon or used as a safety device. Manufacturer assumes no liability for personal injury or equipment damage as the result of use or installation of this accessory. User assumes all risk. User should carefully read all instructions prior to installation. All Trail Armor products are designed, engineered, and fit to new vehicles and their specifications. Damage, modifications, and extreme wear may cause and require modifications to the product and/or your vehicle to insure proper fitment.



### Tool List

Phillip Head Screwdriver  
 T-27 Torx

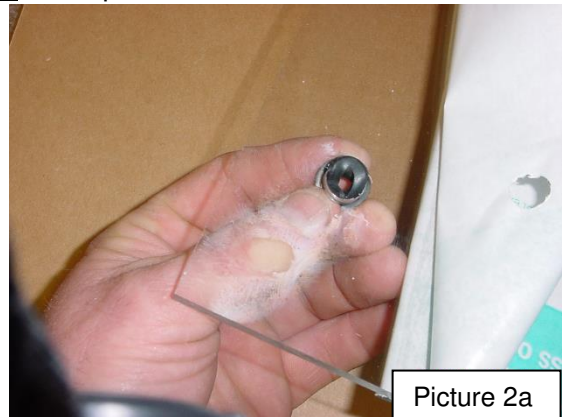
10mm Wrench

### Instructions

- A. Carefully lay upper and lower windshield panels on flat surface; peel back the protective sheeting around the outer edges only enough to reveal the pre-drilled mounting holes. Do not peel the protective sheeting completely at this time! See picture 1.



Picture 1



Picture 2a

- B. Insert supplied rubber grommets into the pre-drilled holes. See picture 2a. Properly installed, the grommets' shoulder edges are uniform on both sides of the windshield. See picture 2b.

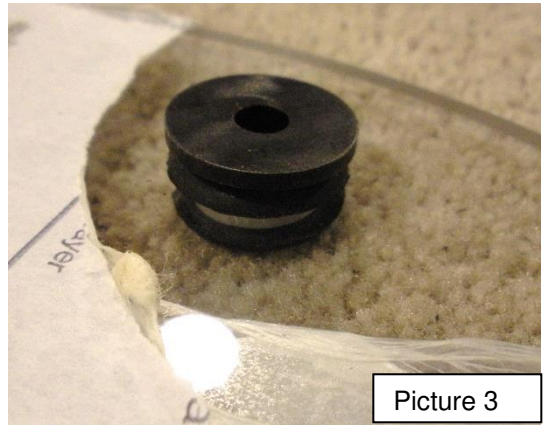


TRAILARMOR.COM  
 839 HWY 2 CORINTH, MS 38834  
 (662) 233-5700

# Installation Instructions



Picture 2b

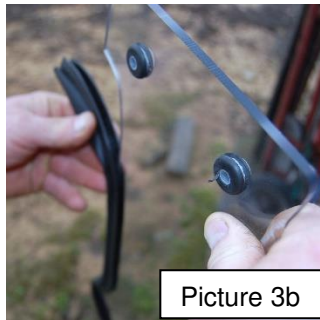


Picture 3

- C. Place large black plastic sleeve spacers with flanged edge into each rubber grommet inserted in the windshield panel. Flange goes on the front (exterior) side of the windshield. See picture 3. Locate the clear stick-on upper joint trim: this serves as a cushion between the two windshield panels and has a thick edge and a thin edge. Apply stick on joint trim to **inside** upper edge of lower panel turning its thick edge to the top. Apply evenly along the upper edge of lower panel. Avoid stretching during application. See picture 3a.



Picture 3a

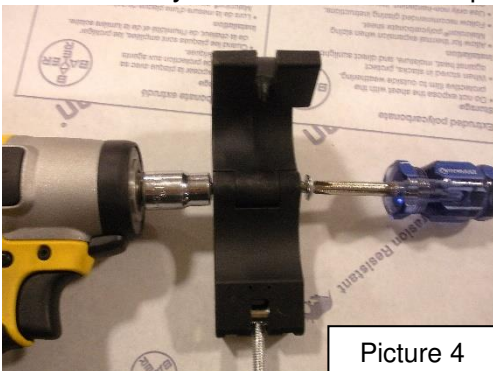


Picture 3b

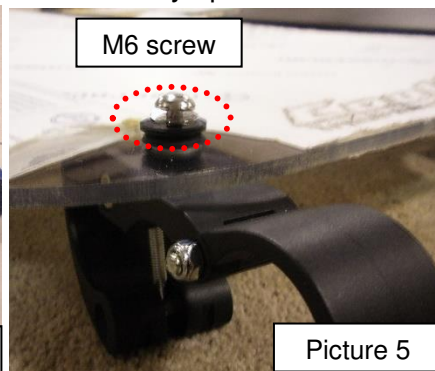


Picture 3c

- D. Install the black push-on bulb seal to the bottom contour cut edge of the lower windshield panel. Roll on by hand as shown in picture 3b and 3c. If you need to, carefully tap on with soft hammer.
- E. Tighten hinge joints on all Trail Armor Fast Clamps enough to where the screws grab the nylock nuts but the clamps will still freely open and close. See Picture 4.

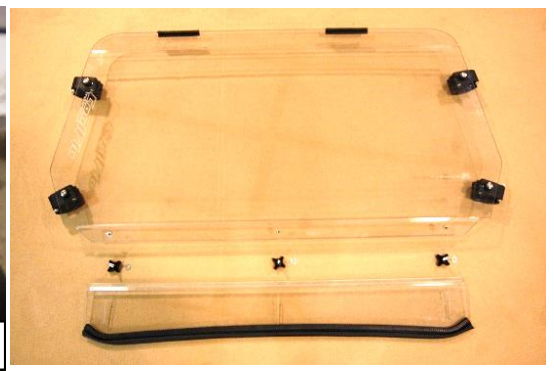


Picture 4



M6 screw

Picture 5



- F. Install Trail Armor Fast Clamp with the hinge tightened in step E to the inside/interior of the upper windshield panels. Secure with M6 screws. See Picture 5. Tighten until rubber grommet inside the windshield's pre-drilled holes has pressure. **Do not overtighten! If you**



TRAILARMOR.COM  
839 HWY 2 CORINTH, MS 38834  
(662) 233-5700

# Installation Instructions

**overtighten, you will pull out the brass insert and break the black spacer with the flanged edge and/or your windshield.**

- G. Install the two supplied 5" push-on side bulb seal to the top portion of the upper windshield. See Picture 6 for all hardware installed

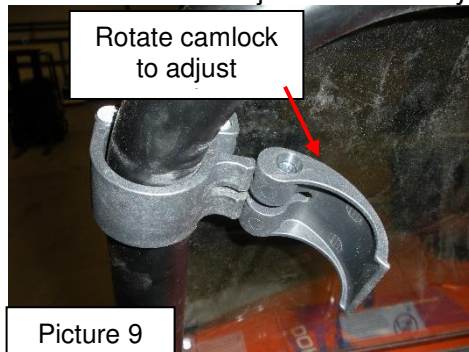


Picture 7

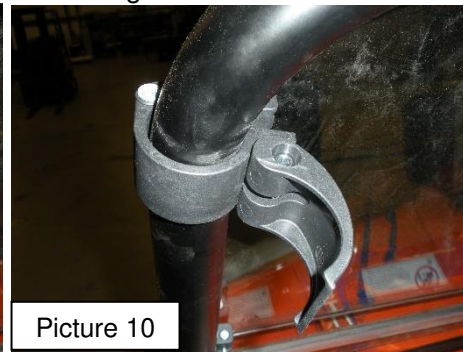


Picture 8

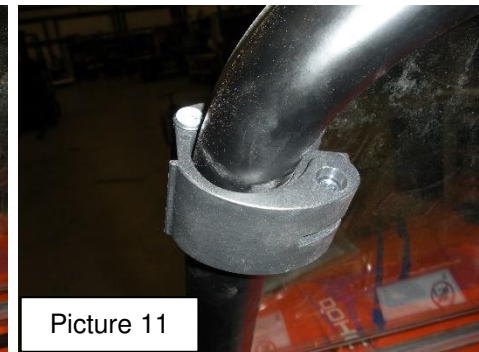
- H. With assistance, position upper windshield panel where the top of the panel is flush with rollcage at the top and sides. Clamp into place as shown in Picture 8 – 11. Rotate camlock clockwise to adjust tension on your roll cage.



Picture 9



Picture 10



Picture 11



Picture 12

- I. Next, locate three supplied 1/4-20 thumb screws and three 1/4 x 1 fender washers. Place fender washers onto the thumb screws. While holding the lower windshield into place on the outside of the upper windshield, insert the three thumb screws through the slots in the lower windshield and into the Trail Armor installed rivet nuts of the upper windshield. **Do not overtighten.** See Picture 12. To adjust the lower panel for air flow, loosen thumbscrews, slide lower panel into desired position and retighten thumbscrews.

Enjoy! Any questions, contact Trail Armor at 662-233-5700.