



TRAILARMOR.COM
 839 HWY 2 CORINTH, MS 38834
 (662) 233-5700

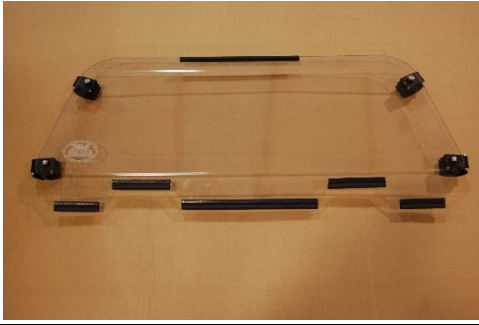
Installation Instructions

2014 Wildcat Trail Rear Fast Clamp Window

TA010RWDS-ACWTRL

Warnings and Product Liability Disclaimer

This product is intended to be used as a cosmetic accessory under normal equipment operation and should not be depended upon or used as a safety device. Manufacturer assumes no liability for personal injury or equipment damage as the result of use or installation of this accessory. User assumes all risk. User should carefully read all instructions prior to installation. All Trail Armor products are designed, engineered, and fit to new vehicles and their specifications. Damage, modifications, and extreme wear may cause and require modifications to the product and/or your vehicle to insure proper fitment.



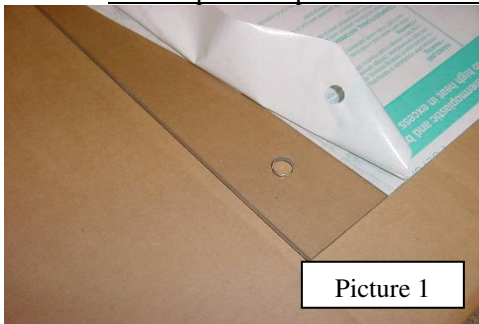
Tool List

Phillip Head Screwdriver
 T-27 Torx

10mm Wrench

Instructions

- A. To start the installation of the Trail Armor Rear Window, Carefully lay the window on a flat surface. Peel back the protective sheeting around the outer edges only enough to reveal the pre-drilled mounting holes. Do not peel the protective sheeting completely at this time! See Picture #1.

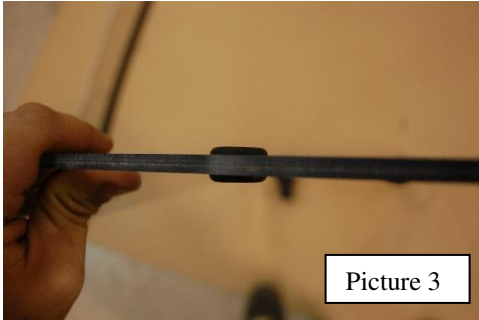


- B. Insert (4) supplied rubber grommets into the pre-drilled holes. See Picture #2. Note: Be sure that the grommets are installed properly. See Picture #3. Insert the Black Plastic Flange into the Large Rubber Grommet from the outside of the windshield. See Picture #4.

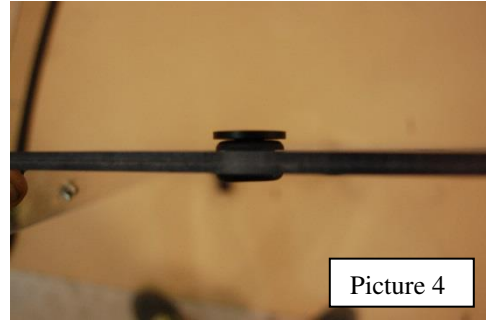


TRAILARMOR.COM
839 HWY 2 CORINTH, MS 38834
(662) 233-5700

Installation Instructions

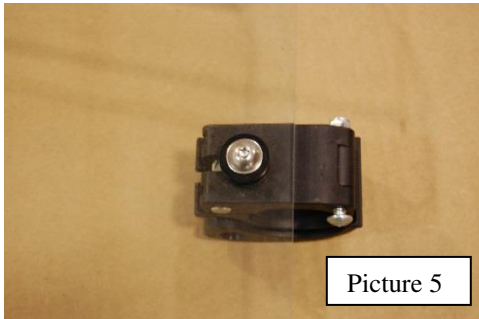


Picture 3

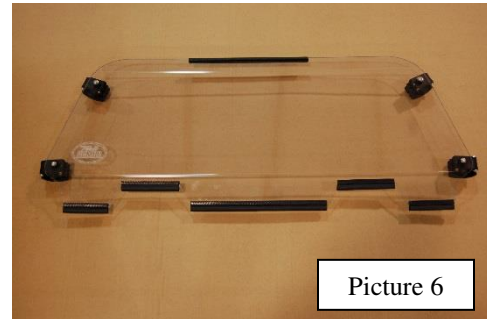


Picture 4

- C. Place a supplied Fast Clamp on the inside of the Rubber Grommet and insert a Chrome Torx Screw. See Picture #5. Install the Fast Clamps. **Do Not Over Tighten. If you over tighten, you will pull out the brass insert and break the black spacer with the flanged edge.**



Picture 5



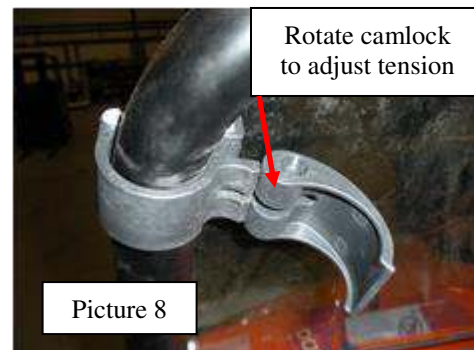
Picture 6

- D. Install the (5) supplied pieces of Push-on Bulb Seal to the bottom portion of the window. Install the 15" Push-on Side Bulb Seal to the top portion of the window, try to center the seal on the window. See Picture #6.

- E. With assistance, hold the window panel into place against the roll cage. Clamp the window in place as shown in Pictures #7-10. Rotate the camlock clockwise to adjust tension on your roll cage.



Picture 7



Picture 8



TRAILARMOR.COM
839 HWY 2 CORINTH, MS 38834
(662) 233-5700

Installation Instructions



Picture 9



Picture 10

Final Install



Enjoy! Any questions, contact Trail Armor at 662-233-5700.
www.trailarmor.com